

DOUBLE GLAZED  
SLIDE-IN DOOR

PATENTED

DRAFT

**NOTE:** THIS DRAFT DETAIL IS FOR GENERAL ARRANGEMENT PURPOSES ONLY, AND DOES NOT NECESSARILY REPRESENT A DETAIL THAT IS APPROPRIATE FOR A SPECIFIC PROJECT. PRODUCTS AND ACCESSORIES PROVIDED BY CASCADIA MUST BE CONFIRMED FOR SPECIFIC PROJECTS.

**NOTE:** ANCHOR CLIPS AT HEAD, SILL AND JAMBS ARE INTERMITTENT

CASCADIA WINDOWS LTD.  
#101-5350 275TH STREET  
LANGLEY, BC, CANADA V4W 0C1

DRAWING TITLE: UNIVERSAL SERIES - SLIDE-IN DOOR HEAD  
RAINSREEN WALL ASSEMBLY, EXTERIOR INSULATION

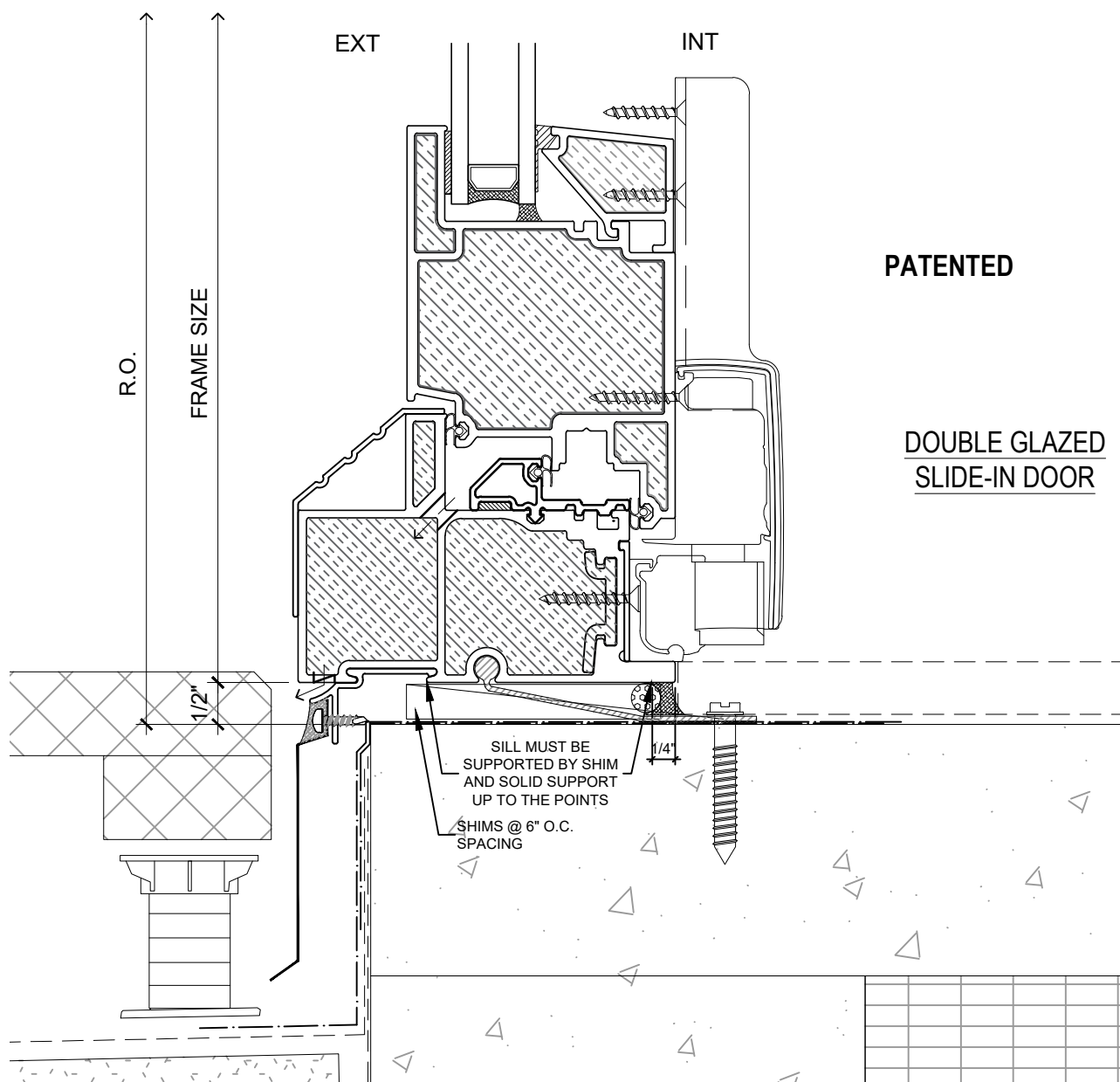
DRAWING NO.:  
D-1.01

SCALE: 6" = 1'-0"

PATENTED

DATE: 26 NOVEMBER, 2018

DRAWN BY: CP



**DRAFT**

**NOTE:** THIS DRAFT DETAIL IS FOR GENERAL ARRANGEMENT PURPOSES ONLY, AND DOES NOT NECESSARILY REPRESENT A DETAIL THAT IS APPROPRIATE FOR A SPECIFIC PROJECT. PRODUCTS AND ACCESSORIES PROVIDED BY CASCADIA MUST BE CONFIRMED FOR SPECIFIC PROJECTS.

**NOTE:** ANCHOR CLIPS AT HEAD, SILL AND JAMBS ARE INTERMITTENT

**CASCADIA WINDOWS LTD.**  
#101-5350 275TH STREET  
LANGLEY, BC, CANADA V4W 0C1

**DRAWING TITLE:** **UNIVERSAL SERIES - SLIDE-IN DOOR SILL**  
**RAINSREEN WALL ASSEMBLY, EXTERIOR INSULATION**

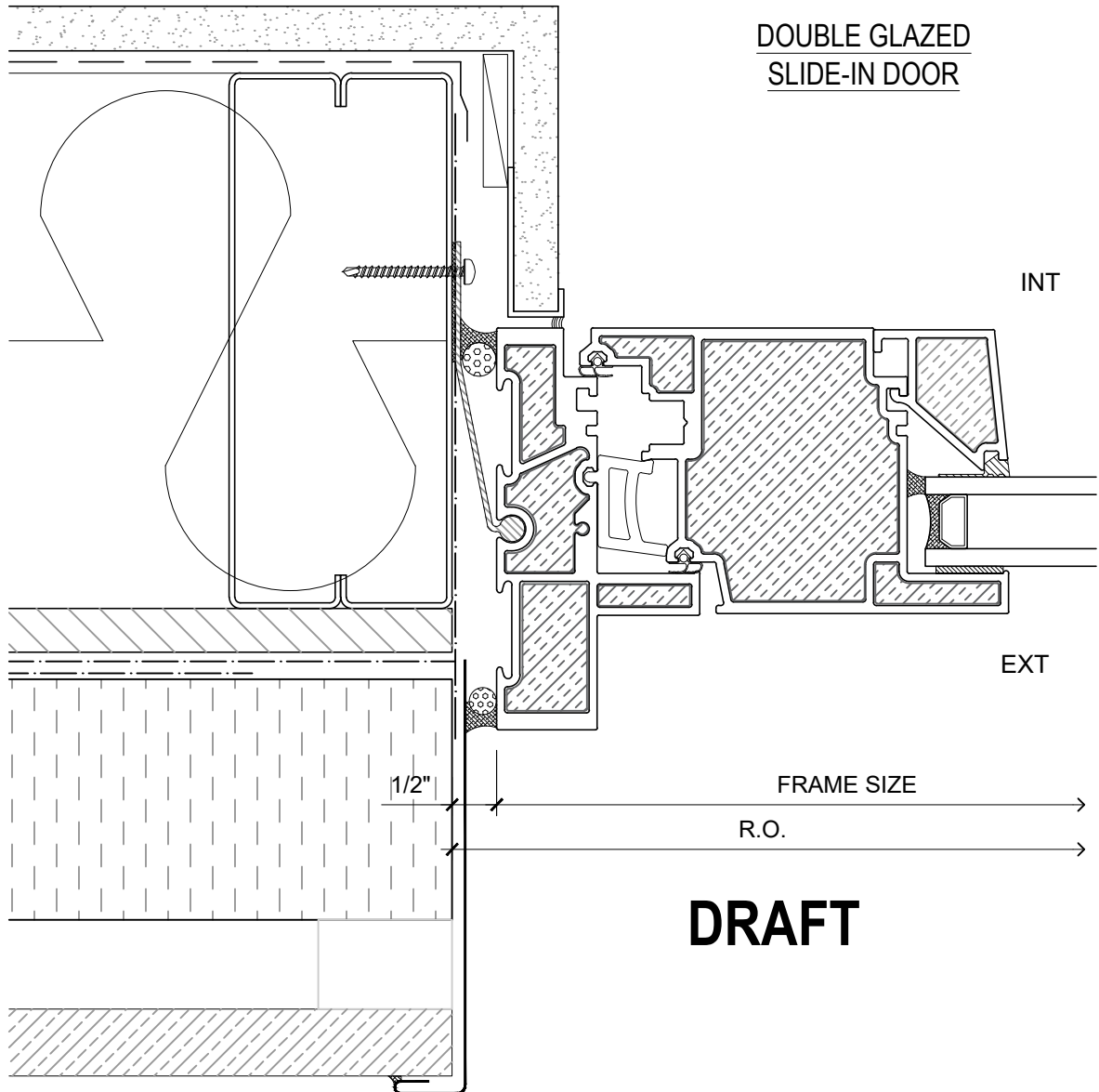
**DRAWING NO.:**  
**D-1.02**

**SCALE:** 6" = 1'-0"

**PATENTED**

**DATE:** 26 NOVEMBER, 2018

**DRAWN BY:** CP



**PATENTED**

**NOTE:** THIS DRAFT DETAIL IS FOR GENERAL ARRANGEMENT PURPOSES ONLY, AND DOES NOT NECESSARILY REPRESENT A DETAIL THAT IS APPROPRIATE FOR A SPECIFIC PROJECT. PRODUCTS AND ACCESSORIES PROVIDED BY CASCADIA MUST BE CONFIRMED FOR SPECIFIC PROJECTS.

**NOTE:** ANCHOR CLIPS AT HEAD, SILL AND JAMBS ARE INTERMITTENT

**CASCADIA WINDOWS LTD.**  
#101-5350 275TH STREET  
LANGLEY, BC, CANADA V4W 0C1

**DRAWING TITLE:** **UNIVERSAL SERIES - SLIDE-IN DOOR JAMB**  
**RAINSCREEN WALL ASSEMBLY, EXTERIOR INSULATION**

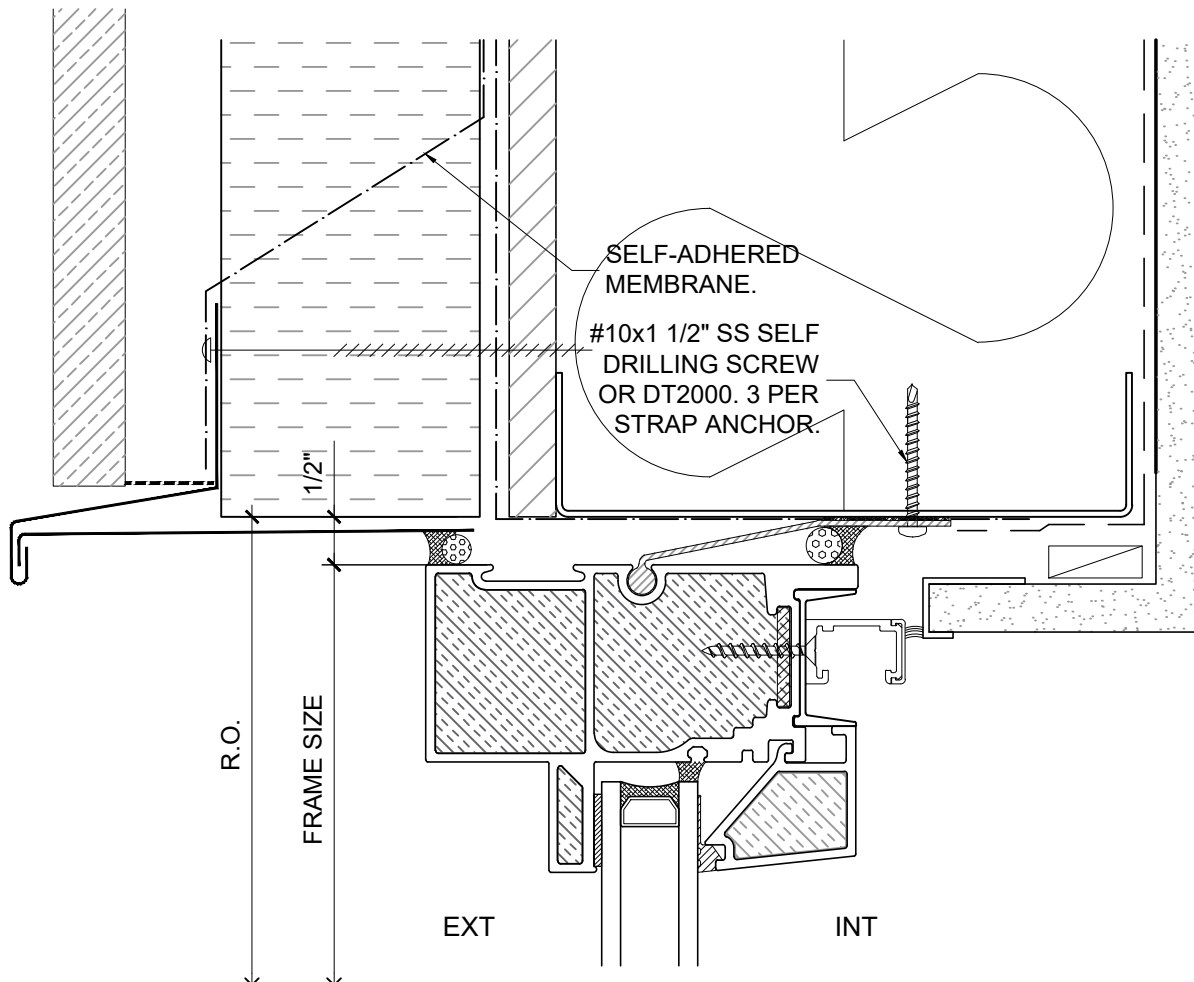
**DRAWING NO.:**  
**D-1.03**

**SCALE:** 6" = 1'-0"

**PATENTED**

**DATE:** 26 NOVEMBER, 2018

**DRAWN BY:** CP



DOUBLE GLAZED  
SLIDE-IN DOOR SIDELITE

**PATENTED**

**DRAFT**

**NOTE:** THIS DRAFT DETAIL IS FOR GENERAL ARRANGEMENT PURPOSES ONLY, AND DOES NOT NECESSARILY REPRESENT A DETAIL THAT IS APPROPRIATE FOR A SPECIFIC PROJECT. PRODUCTS AND ACCESSORIES PROVIDED BY CASCADIA MUST BE CONFIRMED FOR SPECIFIC PROJECTS.

**NOTE:** ANCHOR CLIPS AT HEAD, SILL AND JAMBS ARE INTERMITTENT

**CASCADIA WINDOWS LTD.**  
#101-5350 275TH STREET  
LANGLEY, BC, CANADA V4W 0C1

DRAWING TITLE: **UNIVERSAL SERIES - SLIDE-IN DOOR HEAD**  
**RAINSREEN WALL ASSEMBLY, EXTERIOR INSULATION**

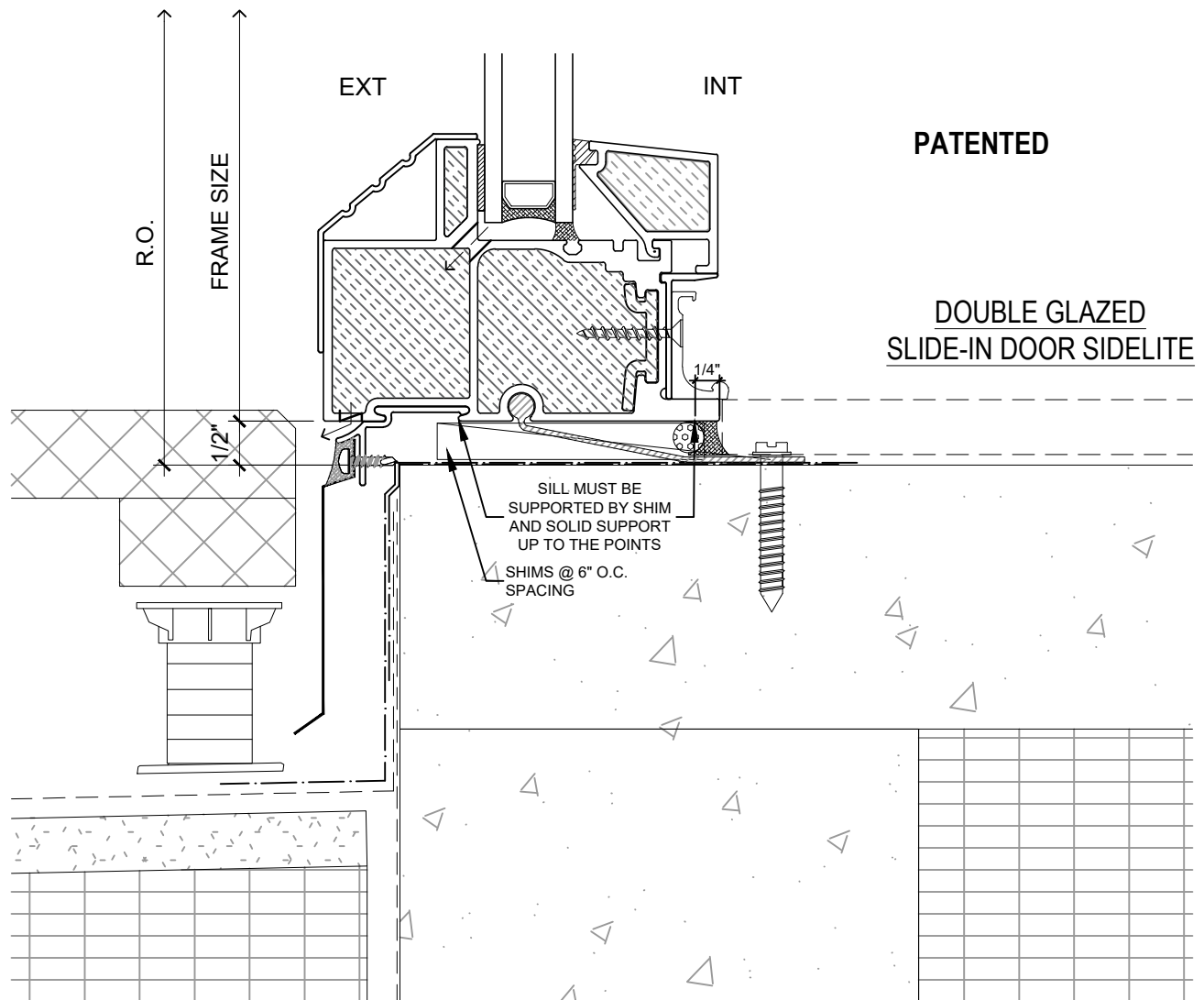
DRAWING NO.:  
**D-1.04**

SCALE: 6" = 1'-0"

PATENTED

DATE: 26 NOVEMBER, 2018

DRAWN BY: CP



**DRAFT**

**NOTE:** THIS DRAFT DETAIL IS FOR GENERAL ARRANGEMENT PURPOSES ONLY, AND DOES NOT NECESSARILY REPRESENT A DETAIL THAT IS APPROPRIATE FOR A SPECIFIC PROJECT. PRODUCTS AND ACCESSORIES PROVIDED BY CASCADIA MUST BE CONFIRMED FOR SPECIFIC PROJECTS.

**NOTE:** ANCHOR CLIPS AT HEAD, SILL AND JAMBS ARE INTERMITTENT

**CASCADIA WINDOWS LTD.**  
#101-5350 275TH STREET  
LANGLEY, BC, CANADA V4W 0C1

DRAWING  
TITLE:

**UNIVERSAL SERIES - SLIDE-IN DOOR SILL**  
**RAINSCREEN WALL ASSEMBLY, EXTERIOR INSULATION**

DRAWING NO.:

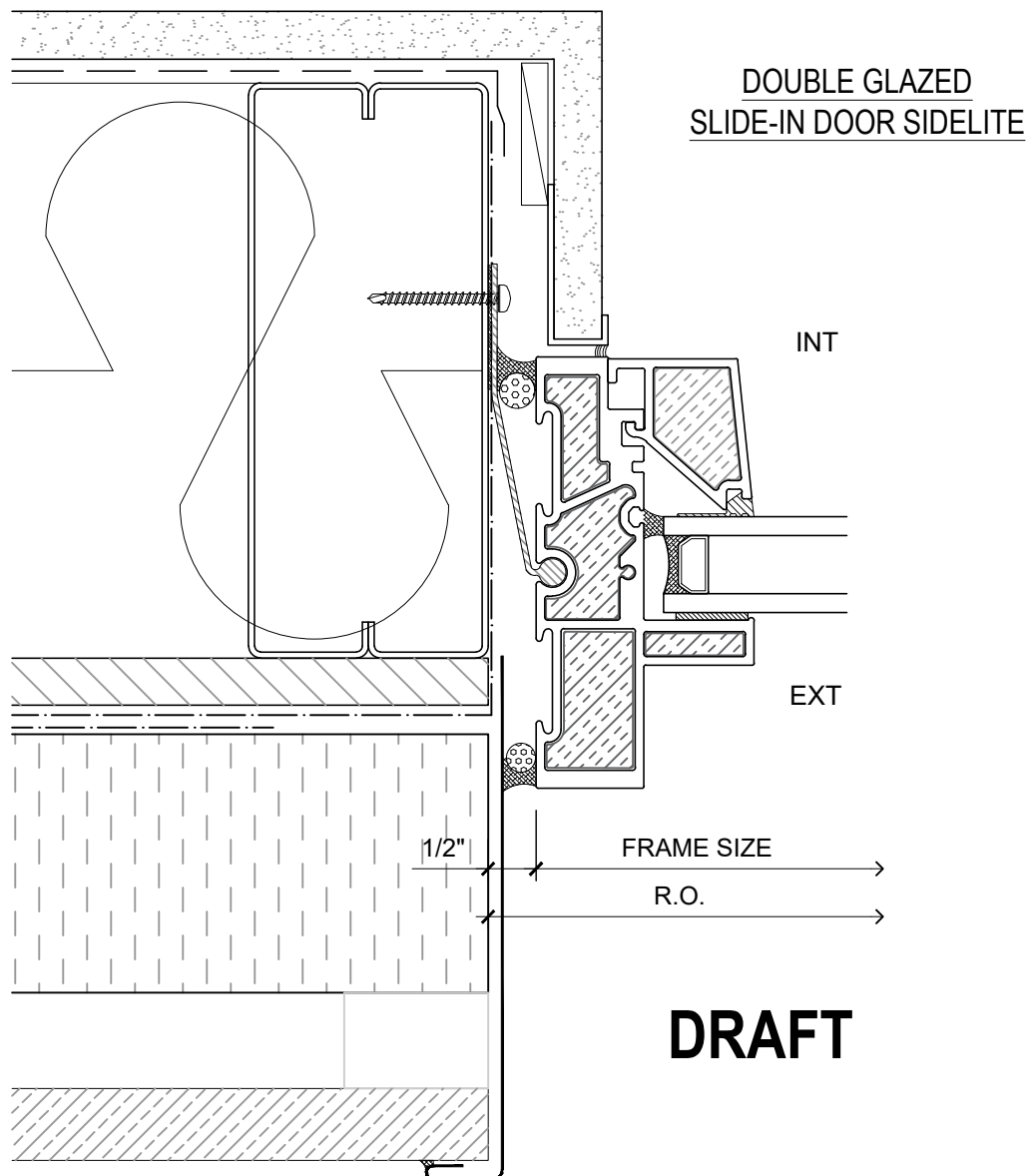
**D-1.05**

SCALE: 6" = 1'-0"

PATENTED

DATE: 26 NOVEMBER, 2018

DRAWN BY: CP



**NOTE:** THIS DRAFT DETAIL IS FOR GENERAL ARRANGEMENT PURPOSES ONLY, AND DOES NOT NECESSARILY REPRESENT A DETAIL THAT IS APPROPRIATE FOR A SPECIFIC PROJECT. PRODUCTS AND ACCESSORIES PROVIDED BY CASCADIA MUST BE CONFIRMED FOR SPECIFIC PROJECTS.

**NOTE:** ANCHOR CLIPS AT HEAD, SILL AND JAMBS ARE INTERMITTENT

**CASCADIA WINDOWS LTD.**  
#101-5350 275TH STREET  
LANGLEY, BC, CANADA V4W 0C1

DRAWING TITLE: **UNIVERSAL SERIES - SLIDE-IN DOOR JAMB**  
**RAINSCREEN WALL ASSEMBLY, EXTERIOR INSULATION**

DRAWING NO.: **D-1.06**

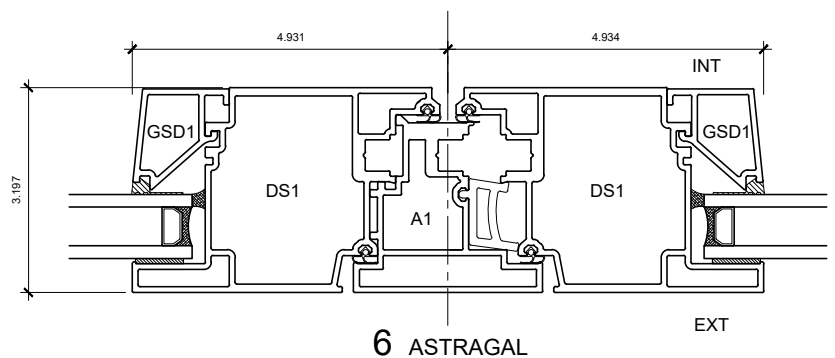
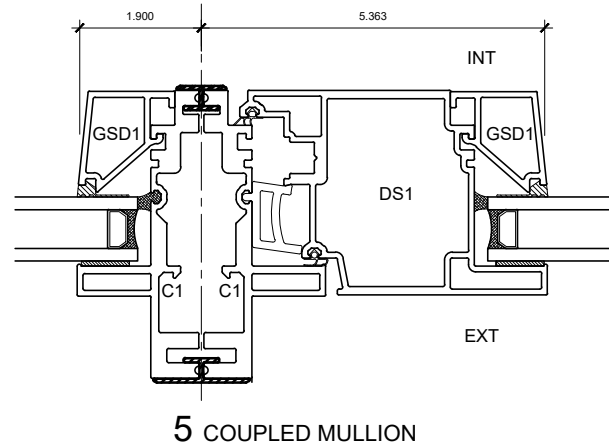
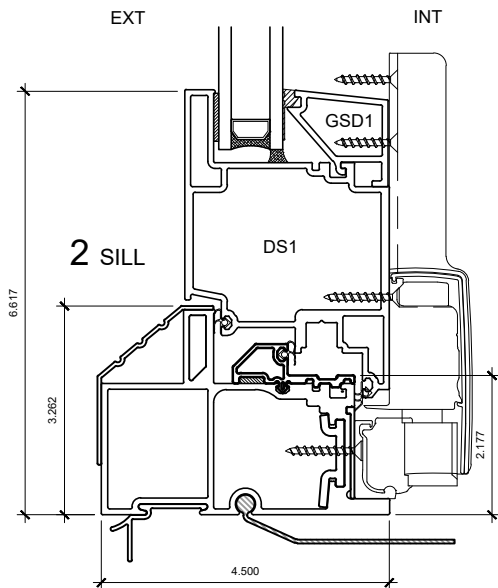
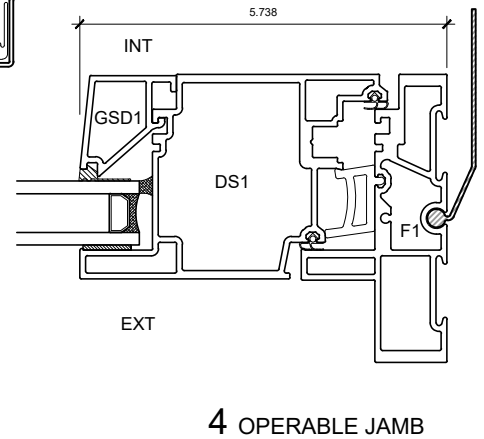
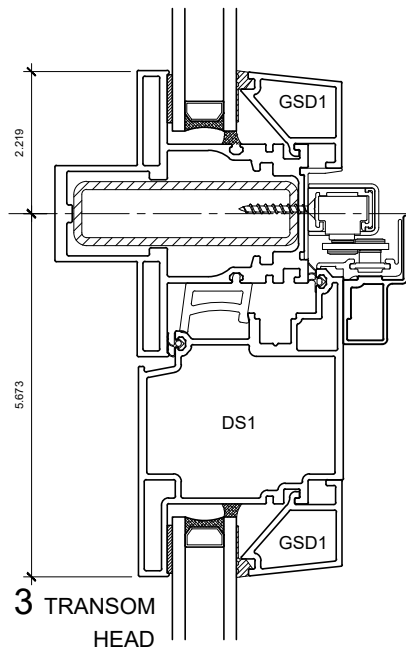
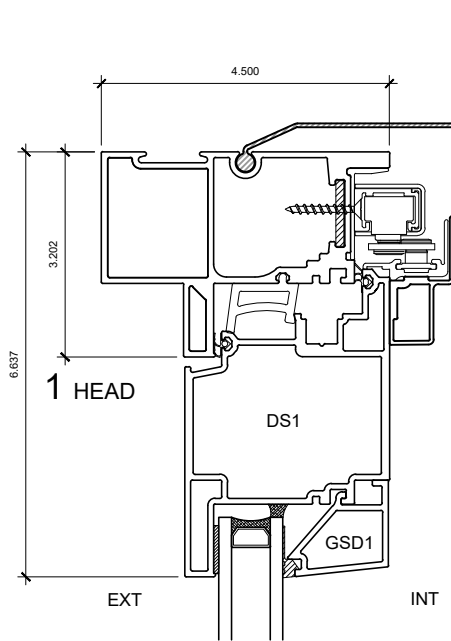
SCALE: 6" = 1'-0"

PATENTED

DATE: 26 NOVEMBER, 2018

DRAWN BY: CP

# DOUBLE GLAZED SLIDE-IN DOOR



**DRAFT**

**PATENTED**

**NOTE:** THIS DRAFT DETAIL IS FOR GENERAL ARRANGEMENT PURPOSES ONLY, AND DOES NOT NECESSARILY REPRESENT A DETAIL THAT IS APPROPRIATE FOR A SPECIFIC PROJECT. PRODUCTS AND ACCESSORIES PROVIDED BY CASCADIA MUST BE CONFIRMED FOR SPECIFIC PROJECTS.

**NOTE:** ANCHOR CLIPS AT HEAD, SILL AND JAMBS ARE INTERMITTENT

**CASCADIA WINDOWS LTD.**  
#101-5350 275TH STREET  
LANGLEY, BC, CANADA V4W 0C1

DRAWING  
TITLE:

**UNIVERSAL SERIES - SLIDE-IN DOOR**  
PRODUCT DRAWING

DRAWING NO.:

**D-2.01**

SCALE: 4" = 1'-0"

PATENTED

DATE: 26 NOVEMBER, 2018

DRAWN BY:

CP