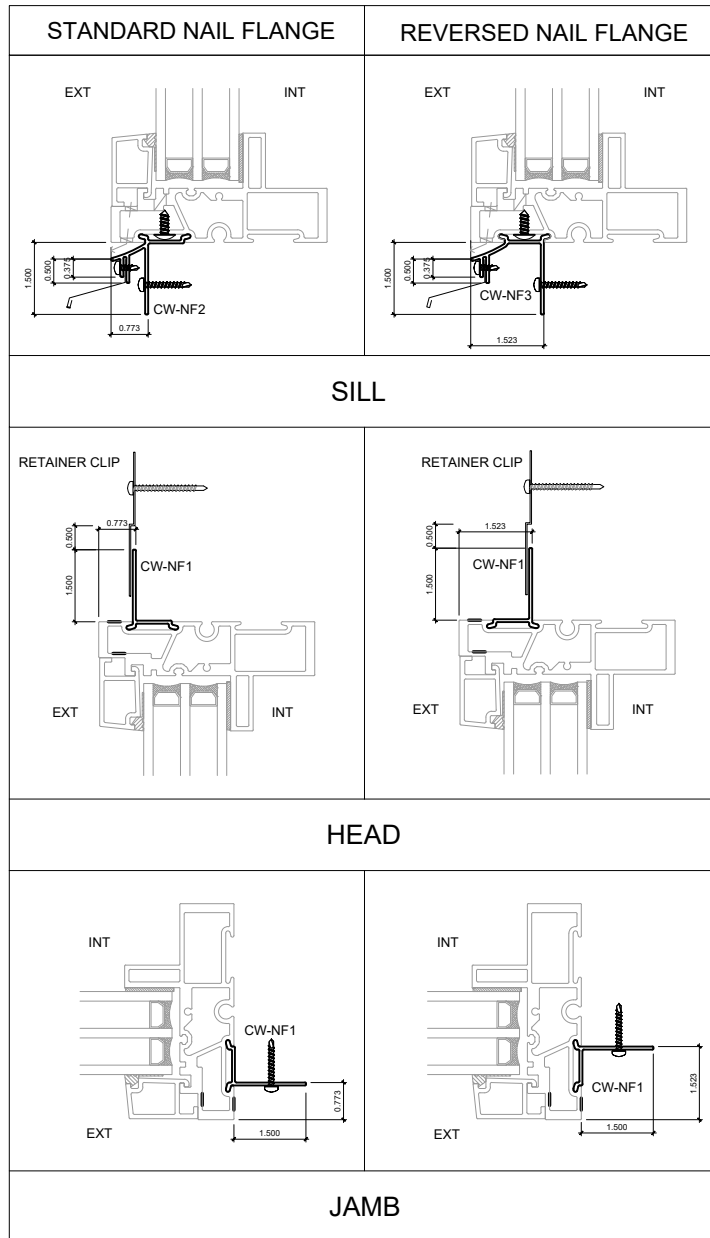
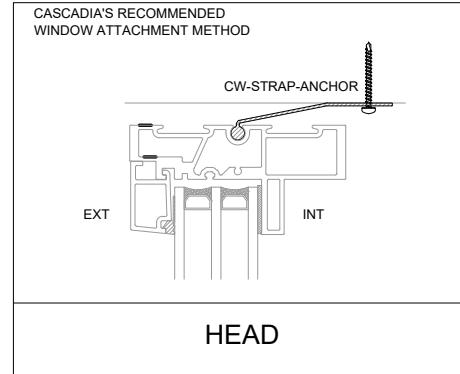


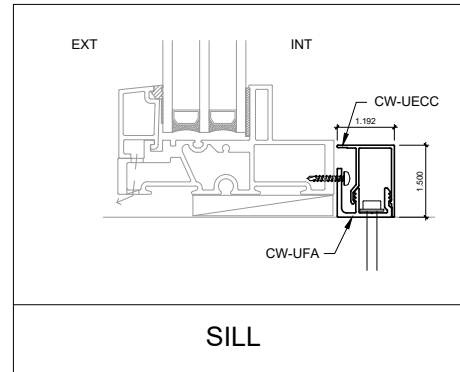
NAIL FLANGE



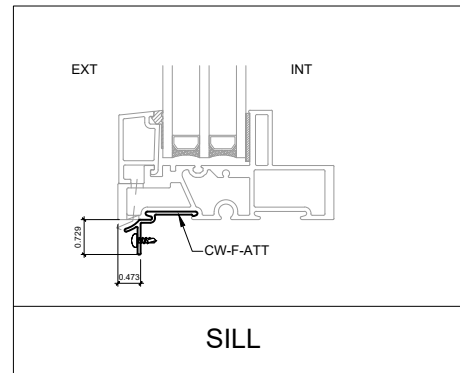
STRAP ANCHOR



SILL ANGLE AND COVER CAP



FLASHING ATTACHMENT ANGLE



UNIVERSAL SERIES EXTERIOR GLAZED AND OUTSWING WINDOWS

NOTE: THIS DRAFT DETAIL IS FOR GENERAL ARRANGEMENT PURPOSES ONLY, AND DOES NOT NECESSARILY REPRESENT A DETAIL THAT IS APPROPRIATE FOR A SPECIFIC PROJECT. PRODUCTS AND ACCESSORIES PROVIDED BY CASCADIA MUST BE CONFIRMED FOR SPECIFIC PROJECTS.

CASCADIA WINDOWS LTD.
#101-5350 275TH STREET
LANGLEY, BC, CANADA V4W 0C1

DRAWING
TITLE:

UNIVERSAL SERIES ® ACCESSORIES
STRAP ANCHOR, NAIL FLANGE, FLASHING ATTACHMENT ANGLE,
SILL ANGLE AND COVER CAP

DRAWING NO.:

1.01

SCALE: 3" = 1'-0"

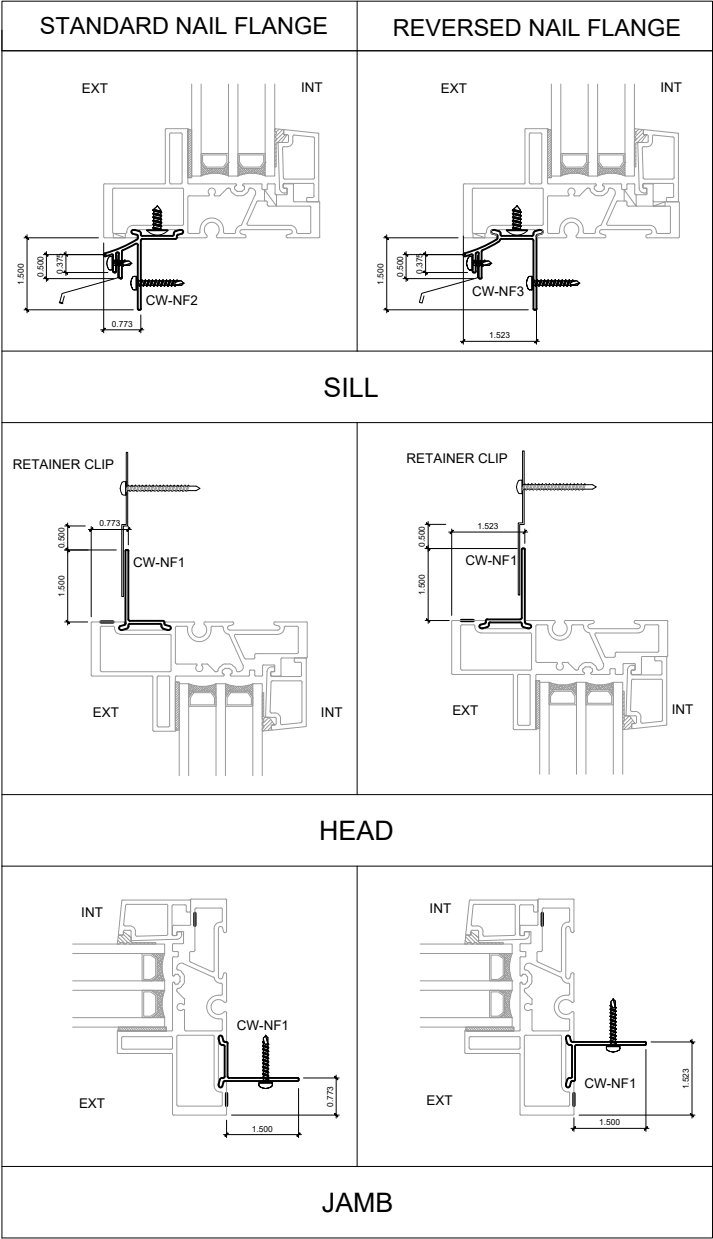
PATENTED

DATE: 24 NOVEMBER, 2025

DRAWN BY:

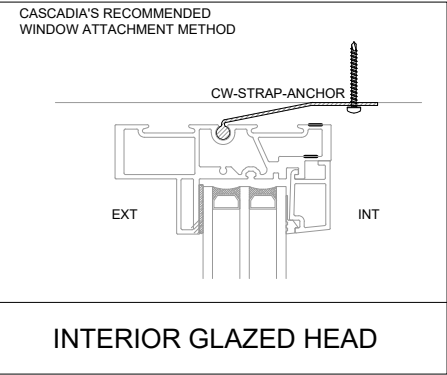
CH

NAIL FLANGE

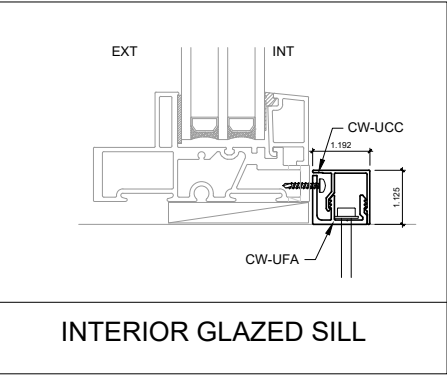


UNIVERSAL SERIES INTERIOR GLAZED AND INSWING WINDOWS

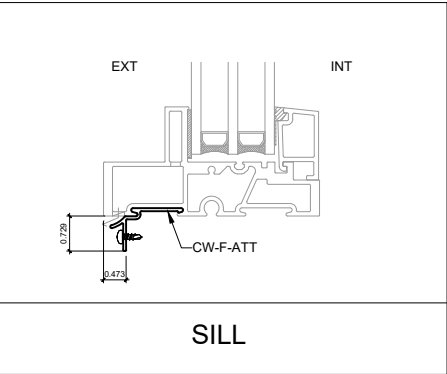
STRAP ANCHOR



SILL ANGLE AND COVER CAP



FLASHING ATTACHMENT ANGLE



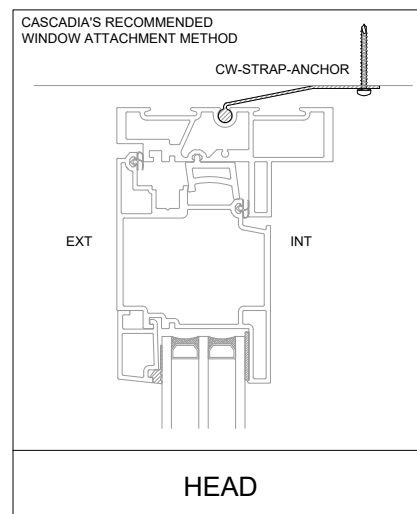
NOTE: THIS DRAFT DETAIL IS FOR GENERAL ARRANGEMENT PURPOSES ONLY, AND DOES NOT NECESSARILY REPRESENT A DETAIL THAT IS APPROPRIATE FOR A SPECIFIC PROJECT. PRODUCTS AND ACCESSORIES PROVIDED BY CASCADIA MUST BE CONFIRMED FOR SPECIFIC PROJECTS.

CASCADIA WINDOWS LTD. #101-5350 275TH STREET LANGLEY, BC, CANADA V4W 0C1	DRAWING TITLE: UNIVERSAL SERIES ® ACCESSORIES STRAP ANCHOR, NAIL FLANGE, FLASHING ATTACHMENT ANGLE, SILL ANGLE AND COVER CAP			DRAWING NO.: 1.02	
	SCALE: 3" = 1'-0"	PATENTED	DATE: 24 NOVEMBER, 2025	DRAWN BY: CH	

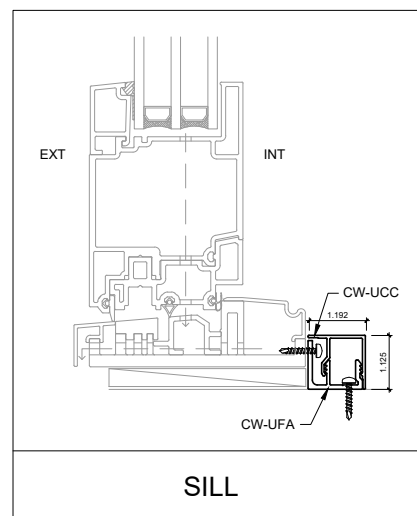
NAIL FLANGE

STANDARD NAIL FLANGE	REVERSED NAIL FLANGE
HEAD	HEAD
JAMB	JAMB

STRAP ANCHOR



SILL ANGLE AND COVER CAP



UNIVERSAL SERIES OUTSWING DOORS

FLASHING ATTACHMENT ANGLE & SILL NAIL FLANGE ARE NOT AVAILABLE FOR UNIVERSAL DOORS

NOTE: THIS DRAFT DETAIL IS FOR GENERAL ARRANGEMENT PURPOSES ONLY, AND DOES NOT NECESSARILY REPRESENT A DETAIL THAT IS APPROPRIATE FOR A SPECIFIC PROJECT. PRODUCTS AND ACCESSORIES PROVIDED BY CASCADIA MUST BE CONFIRMED FOR SPECIFIC PROJECTS.

CASCADIA WINDOWS LTD.
#101-5350 275TH STREET
LANGLEY, BC, CANADA V4W 0C1

DRAWING
TITLE:

UNIVERSAL SERIES ® ACCESSORIES
STRAP ANCHOR, NAIL FLANGE, SILL ANGLE AND COVER CAP

DRAWING NO.:

1.03

SCALE: 3" = 1'-0"

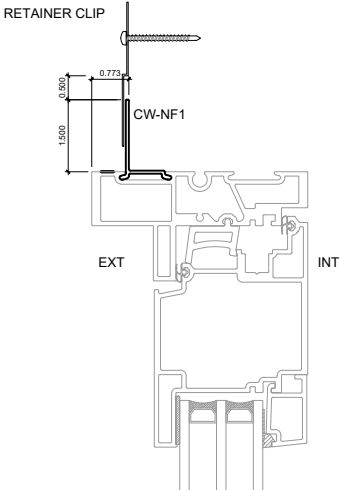
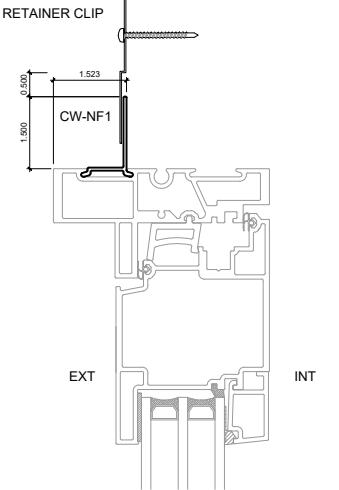
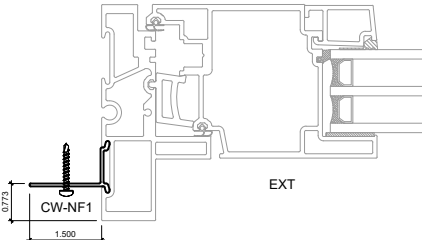
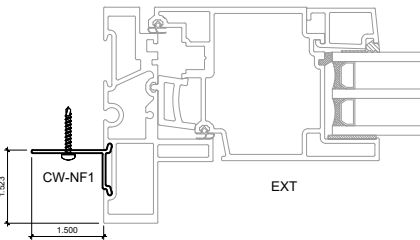
PATENTED

DATE: 24 NOVEMBER, 2025

DRAWN BY:

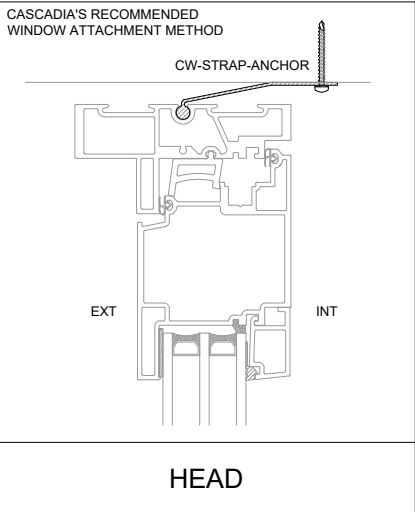
CH

NAIL FLANGE

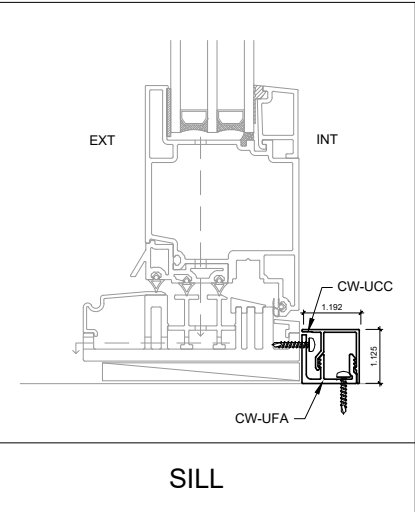
STANDARD NAIL FLANGE	REVERSED NAIL FLANGE
	
HEAD	HEAD
	
JAMB	JAMB

UNIVERSAL SERIES
IN SWING DOORS

STRAP ANCHOR



SILL ANGLE
AND COVER CAP



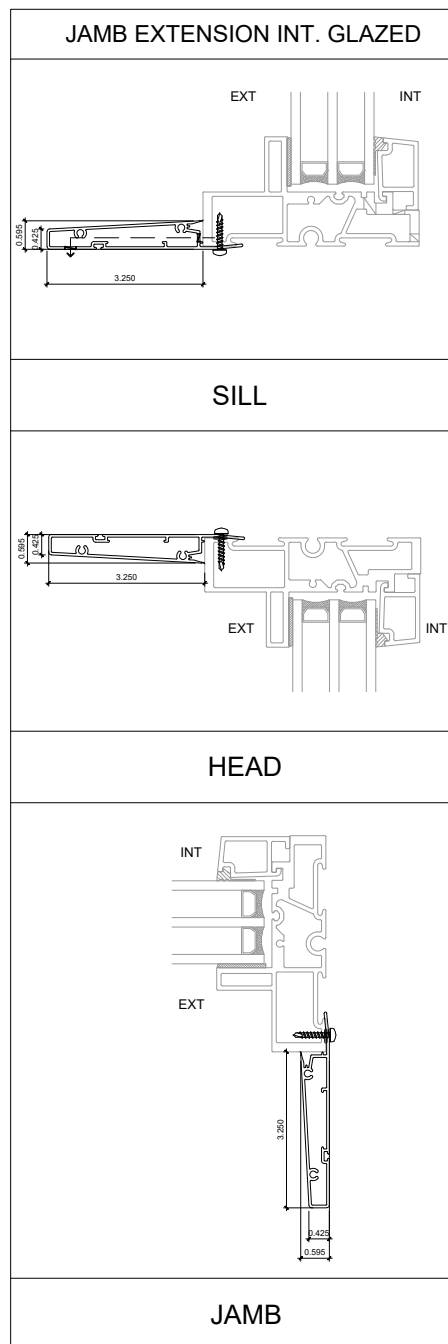
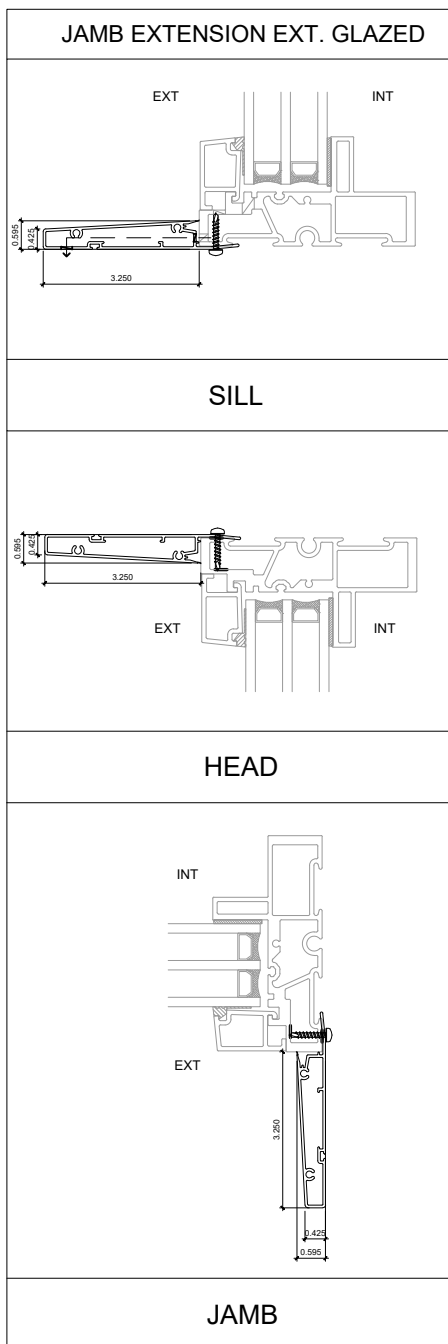
FLASHING ATTACHMENT ANGLE &
SILL NAIL FLANGE ARE NOT
AVAILABLE FOR UNIVERSAL
DOORS

NOTE: THIS DRAFT DETAIL IS FOR GENERAL ARRANGEMENT PURPOSES ONLY, AND DOES NOT NECESSARILY REPRESENT A DETAIL THAT IS APPROPRIATE FOR A SPECIFIC PROJECT. PRODUCTS AND ACCESSORIES PROVIDED BY CASCADIA MUST BE CONFIRMED FOR SPECIFIC PROJECTS.

CASCADIA WINDOWS LTD. #101-5350 275TH STREET LANGLEY, BC, CANADA V4W 0C1	DRAWING TITLE:	UNIVERSAL SERIES ® ACCESSORIES STRAP ANCHOR, NAIL FLANGE, SILL ANGLE AND COVER CAP		DRAWING NO.:	1.04
	SCALE:	3" = 1'-0"	PATENTED	DATE:	24 NOVEMBER, 2025
				DRAWN BY:	CH

UNIVERSAL SERIES EXTERIOR AND INTERIOR GLAZED WINDOWS

3 1/4" JAMB EXTENSION



NOTE: THIS DRAFT DETAIL IS FOR GENERAL ARRANGEMENT PURPOSES ONLY, AND DOES NOT NECESSARILY REPRESENT A DETAIL THAT IS APPROPRIATE FOR A SPECIFIC PROJECT. PRODUCTS AND ACCESSORIES PROVIDED BY CASCADIA MUST BE CONFIRMED FOR SPECIFIC PROJECTS.

CASCADIA WINDOWS LTD.
#101-5350 275TH STREET
LANGLEY, BC, CANADA V4W 0C1

DRAWING
TITLE:

UNIVERSAL SERIES ® ACCESSORIES
JAMB EXTENSIONS

DRAWING NO.:

1.05

SCALE: 3" = 1'-0"

PATENTED

DATE: 24 NOVEMBER, 2025

DRAWN BY:

CH

UNIVERSAL SERIES EXTERIOR AND INTERIOR GLAZED WINDOWS

1 5/8" JAMB EXTENSION

JAMB EXTENSION EXT. GLAZED	JAMB EXTENSION INT. GLAZED
SILL	SILL
HEAD	HEAD
JAMB	JAMB

NOTE: THIS DRAFT DETAIL IS FOR GENERAL ARRANGEMENT PURPOSES ONLY, AND DOES NOT NECESSARILY REPRESENT A DETAIL THAT IS APPROPRIATE FOR A SPECIFIC PROJECT. PRODUCTS AND ACCESSORIES PROVIDED BY CASCADIA MUST BE CONFIRMED FOR SPECIFIC PROJECTS.

CASCADIA WINDOWS LTD.
#101-5350 275TH STREET
LANGLEY, BC, CANADA V4W 0C1

DRAWING
TITLE:

UNIVERSAL SERIES ® ACCESSORIES
JAMB EXTENSIONS

DRAWING NO.:

1.06

SCALE: 3" = 1'-0"

PATENTED

DATE: 24 NOVEMBER, 2025

DRAWN BY:

CH