

LEGEND

- (XA1) #10 X 1 1/2" STAINLESS STEEL SELF DRILLING SCREWS @ 6" O.C. OR AS NOTED. BY OTHERS
- (XA2) #10 X 3/4" STAINLESS STEEL SELF DRILLING SCREWS @ 6" O.C. BY OTHERS
- (B1) EXTRUDED ALUMINUM UNIVERSAL ANCHOR CLIP BY CASCADIA. SPACING PER ATTACHED GUIDE.
- (B2) CONTINUOUS ALUMINUM SILL ANGLE & COVER CAP BY CASCADIA
- (B3) EXTRUDED ALUMINUM FLASHING ATTACHMENT ANGLE BY CASCADIA.
- (XC1) SEALANT BEAD BETWEEN MEMBRANE AND FRAME BY OTHERS
- (XC2) ROD & SEALANT BY OTHERS
- (XC3) SEALANT BEAD BY OTHERS
- (XD1) PVC SHIMS - 8" O.C. & UNDER EACH VERTICAL. BY OTHERS
- (X1) METAL FLASHING BY OTHERS
- (X2) INTERIOR FINISHES BY OTHERS

PROJECT TITLE:

UNIVERSAL &
ALUMINUM
DOOR INSERTS

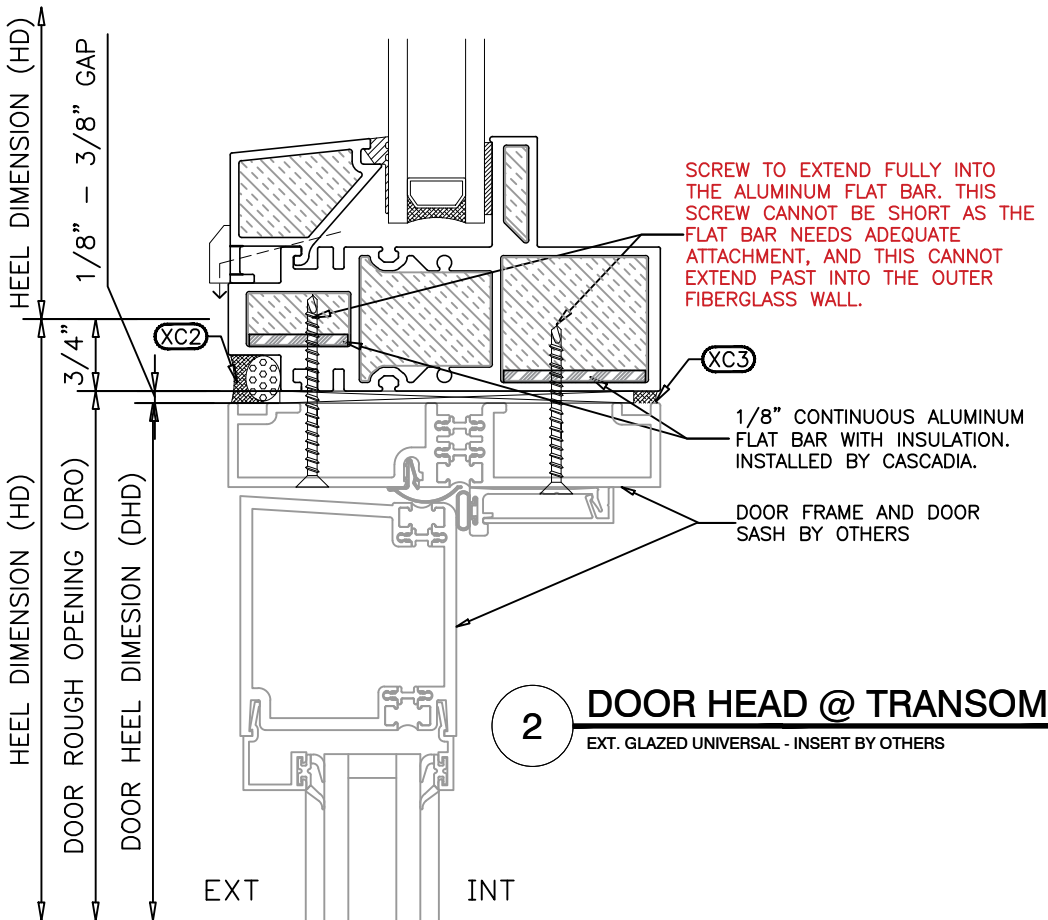
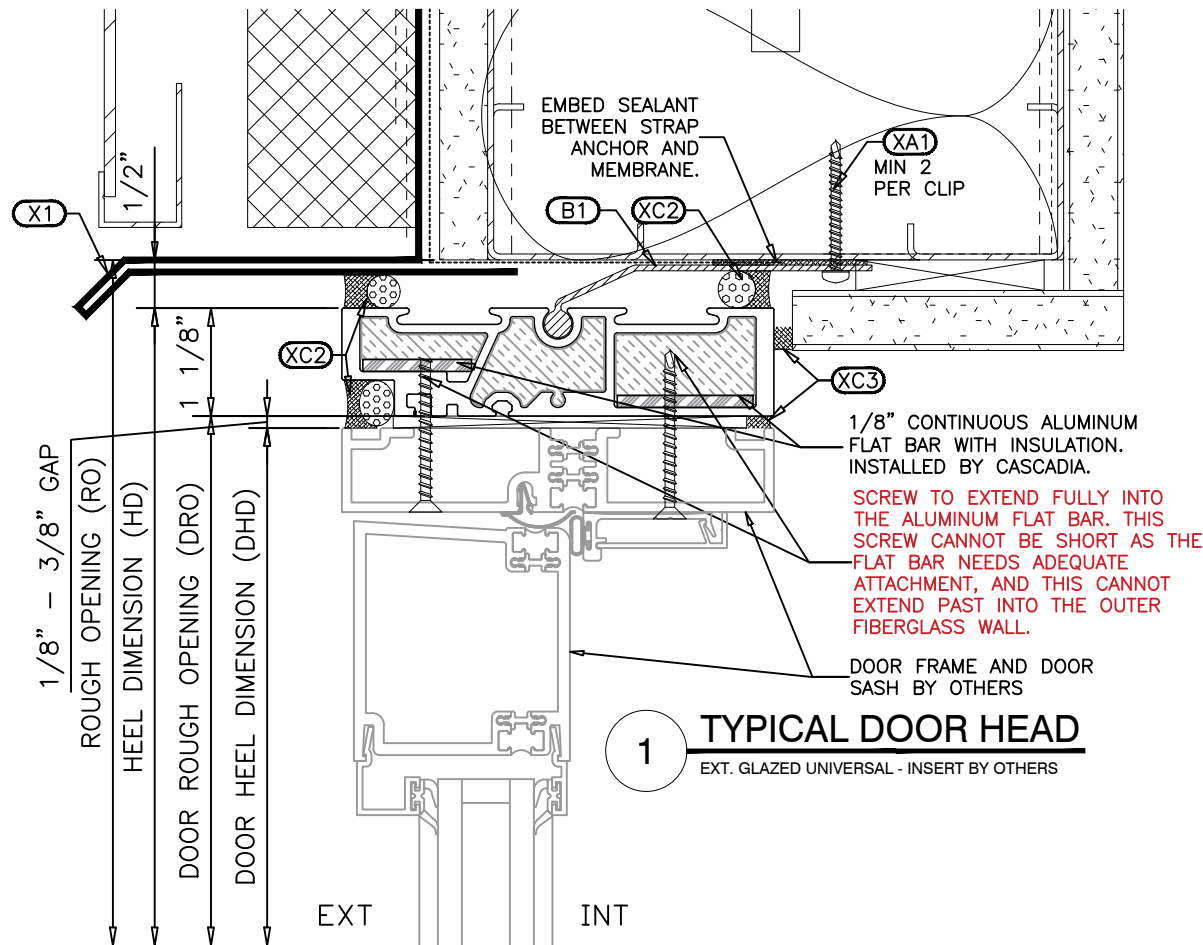
ISSUE	DESCRIPTION	DATE
1	1ST SUBMITTAL	AUG.28/25

DRAWING
TITLE:

INSTALLATION
DETAILS

SCALE: N.T.S.
DATE: NOV. 13/2020
DRAWN BY: RZ
PROJECT #: XXXX

DRAWING NO.:
5.1



- NOTES:
- DETAILS ARE FOR STRUCTURAL INSTALLATION PURPOSES ONLY. ALL OTHER DETAILS ARE TO BE REFERENCED TO THE ARCHITECTURAL DRAWINGS AND ENVELOPE DETAILS. CASCADIA WINDOWS & DOORS NEITHER APPROVES NOR DISAPPROVES THE ENVELOPE DETAILS OR STRUCTURE OF THE BUILDING.
 - INSTALLERS TO ENSURE THAT WINDOWS & DOORS ARE INSTALLED LEVEL, PLUMB & SQUARE WITH ALL APPROPRIATE FASTENING & SHIMMING.
 - REFER TO BUILDING ENVELOPE DETAILS FOR MEMBRANING, SEQUENCING, FINISHING & SEALING INSTRUCTIONS.
 - BACKER RODS BEHIND SEALANT BEADS IN GLAZING POCKET ARE A DISCRETIONARY COMPONENT AND ARE REQUIRED ONLY WHEN GAP BETWEEN GLASS AND WINDOW FRAME EXCEEDS APPROXIMATELY 1/8".
 - SEE ADDITIONAL COUPLING INSTRUCTIONS WHEN COUPLING IS REQUIRED.

LEGEND

- (XA1) #10 X 1 1/2" STAINLESS STEEL SELF DRILLING SCREWS @ 6" O.C. OR AS NOTED. BY OTHERS
- (XA2) #10 X 3/4" STAINLESS STEEL SELF DRILLING SCREWS @ 6" O.C. BY OTHERS
- (B1) EXTRUDED ALUMINUM UNIVERSAL ANCHOR CLIP BY CASCADIA. SPACING PER ATTACHED GUIDE.
- (B2) CONTINUOUS ALUMINUM SILL ANGLE & COVER CAP BY CASCADIA
- (B3) EXTRUDED ALUMINUM FLASHING ATTACHMENT ANGLE BY CASCADIA.
- (XC1) SEALANT BEAD BETWEEN MEMBRANE AND FRAME BY OTHERS
- (XC2) ROD & SEALANT BY OTHERS
- (XC3) SEALANT BEAD BY OTHERS
- (XD1) PVC SHIMS - 8" O.C. & UNDER EACH VERTICAL. BY OTHERS
- (X1) METAL FLASHING BY OTHERS
- (X2) INTERIOR FINISHES BY OTHERS

PROJECT TITLE:

UNIVERSAL &
ALUMINUM
DOOR INSERTS

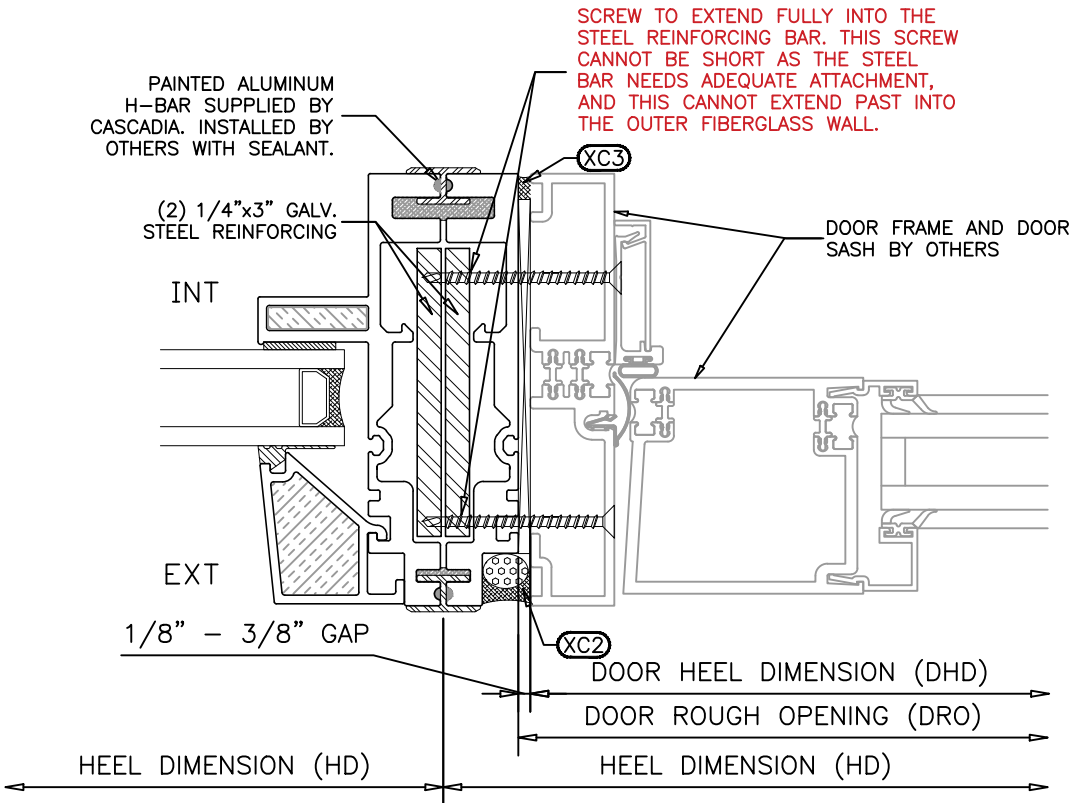
ISSUE	DESCRIPTION	DATE
1	1ST SUBMITTAL	AUG.28/25

DRAWING
TITLE:

INSTALLATION
DETAILS

SCALE: **N.T.S.**
DATE: **AUG. 29/2025**
DRAWN BY: **RZ**
PROJECT #: **XXXX**

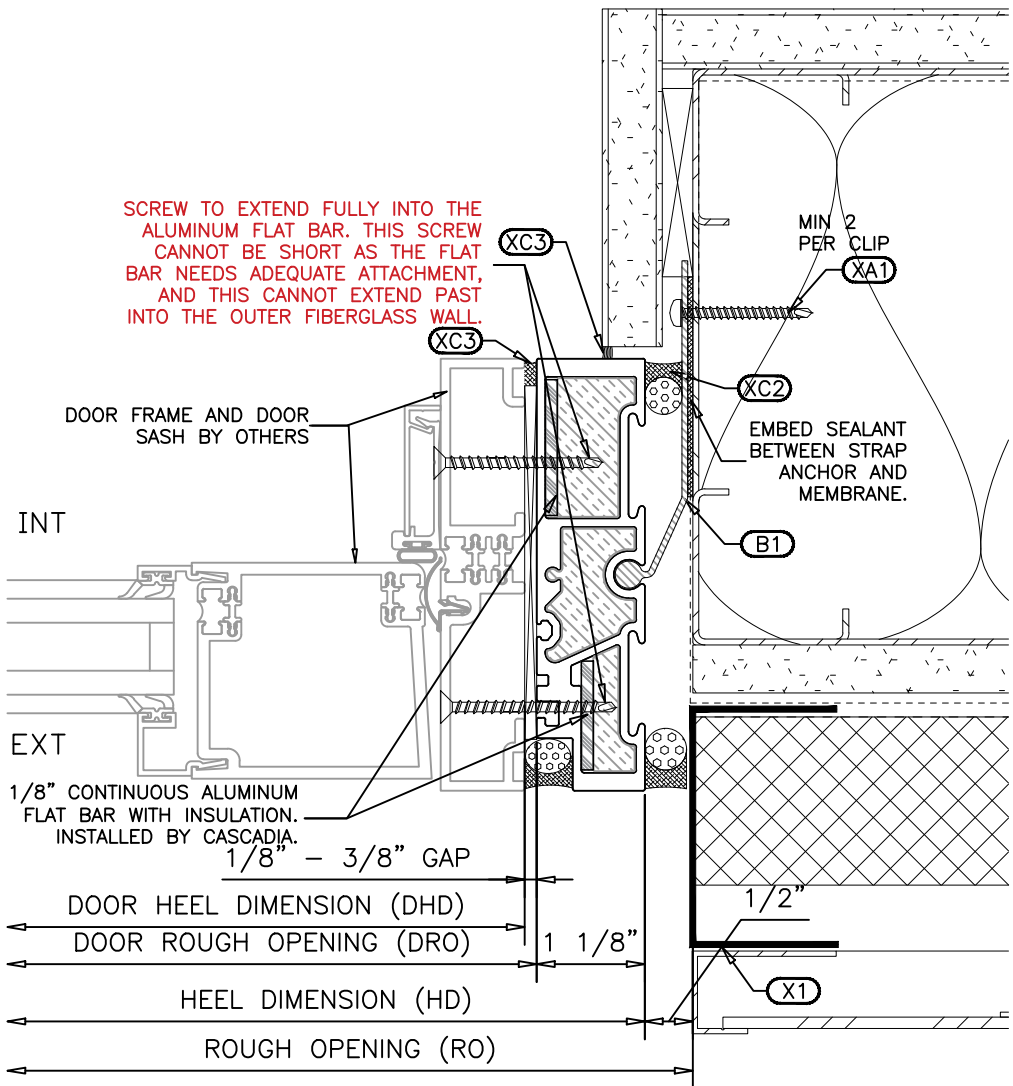
DRAWING NO.:
5.2



3

TYPICAL DOOR COUPLER

EXT. GLAZED UNIVERSAL - INSERT BY OTHERS



4

TYPICAL DOOR JAMB

EXT. GLAZED UNIVERSAL - INSERT BY OTHERS

- NOTES:
- DETAILS ARE FOR STRUCTURAL INSTALLATION PURPOSES ONLY. ALL OTHER DETAILS ARE TO BE REFERENCED TO THE ARCHITECTURAL DRAWINGS AND ENVELOPE DETAILS. CASCADIA WINDOWS & DOORS NEITHER APPROVES NOR DISAPPROVES THE ENVELOPE DETAILS OR STRUCTURE OF THE BUILDING.
 - INSTALLERS TO ENSURE THAT WINDOWS & DOORS ARE INSTALLED LEVEL, PLUMB & SQUARE WITH ALL APPROPRIATE FASTENING & SHIMMING.
 - REFER TO BUILDING ENVELOPE DETAILS FOR MEMBRANING, SEQUENCING, FINISHING & SEALING INSTRUCTIONS.
 - BACKER RODS BEHIND SEALANT BEADS IN GLAZING POCKET ARE A DISCRETIONARY COMPONENT AND ARE REQUIRED ONLY WHEN GAP BETWEEN GLASS AND WINDOW FRAME EXCEEDS APPROXIMATELY 1/8".
 - SEE ADDITIONAL COUPLING INSTRUCTIONS WHEN COUPLING IS REQUIRED.

LEGEND

- (XA1) #10 X 1 1/2" STAINLESS STEEL SELF DRILLING SCREWS @ 6" O.C. OR AS NOTED. BY OTHERS
- (XA2) #10 X 3/4" STAINLESS STEEL SELF DRILLING SCREWS @ 6" O.C. BY OTHERS
- (B1) EXTRUDED ALUMINUM UNIVERSAL ANCHOR CLIP BY CASCADIA. SPACING PER ATTACHED GUIDE.
- (B2) CONTINUOUS ALUMINUM SILL ANGLE & COVER CAP BY CASCADIA
- (B3) EXTRUDED ALUMINUM FLASHING ATTACHMENT ANGLE BY CASCADIA.
- (XC1) SEALANT BEAD BETWEEN MEMBRANE AND FRAME BY OTHERS
- (XC2) ROD & SEALANT BY OTHERS
- (XC3) SEALANT BEAD BY OTHERS
- (XD1) PVC SHIMS - 8" O.C. & UNDER EACH VERTICAL. BY OTHERS
- (X1) METAL FLASHING BY OTHERS
- (X2) INTERIOR FINISHES BY OTHERS

PROJECT TITLE:

UNIVERSAL &
ALUMINUM
DOOR INSERTS

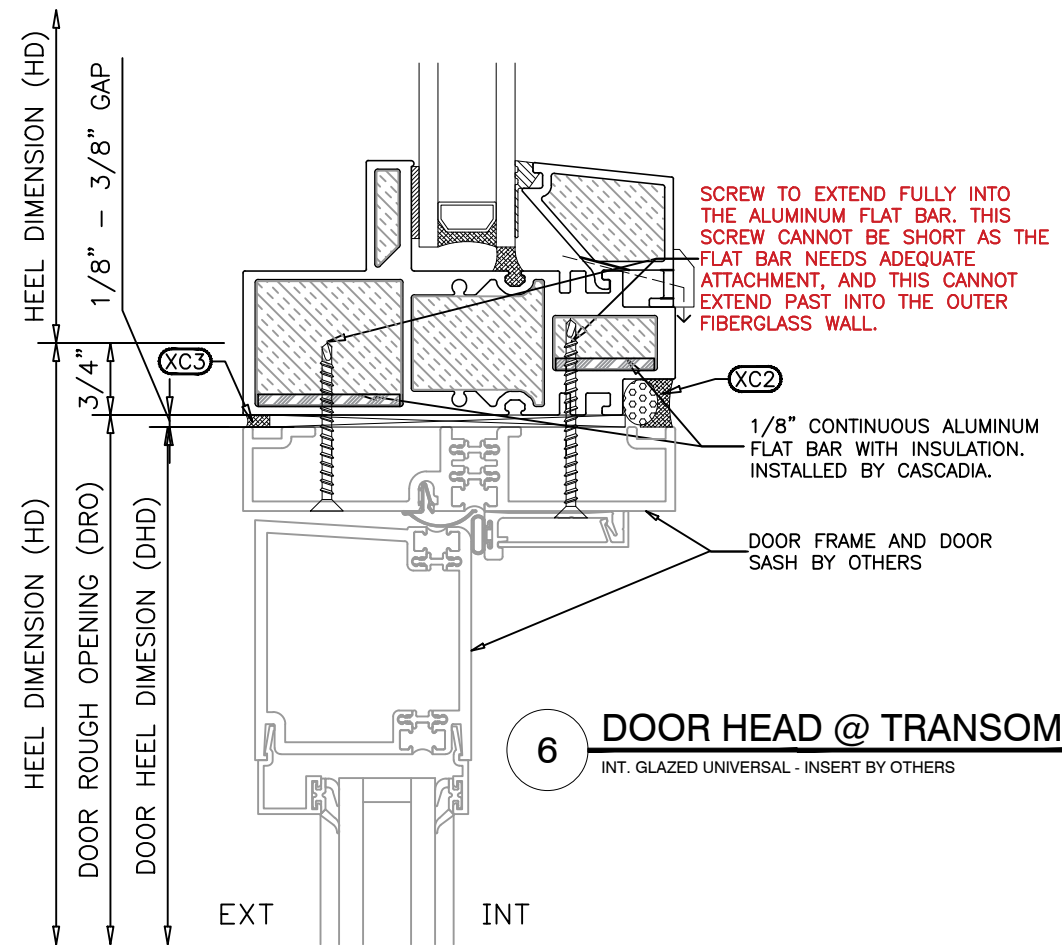
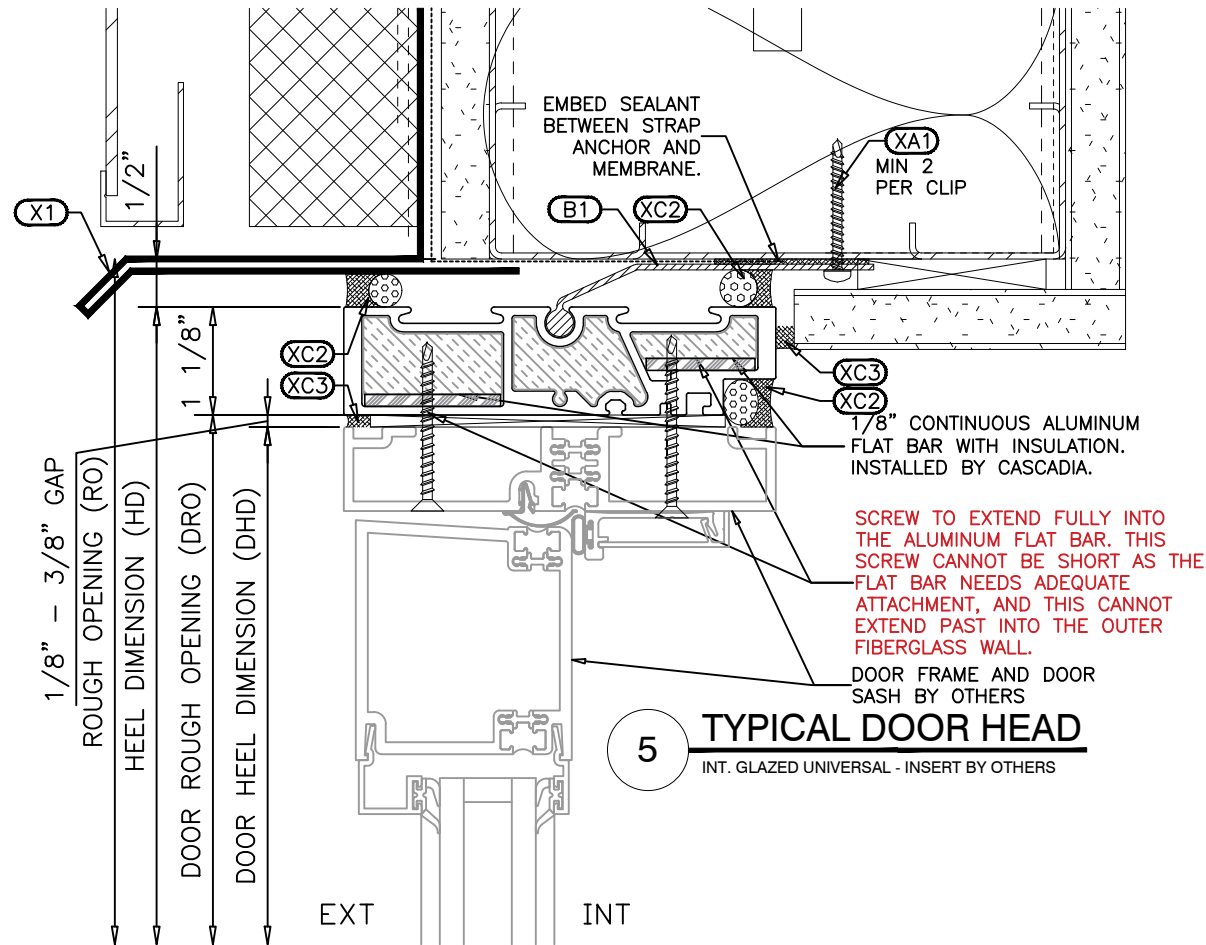
ISSUE	DESCRIPTION	DATE
1	1ST SUBMITTAL	AUG.28/25

DRAWING
TITLE:

INSTALLATION
DETAILS

SCALE: N.T.S.
DATE: AUG. 28/2025
DRAWN BY: RZ
PROJECT #: XXXX

DRAWING NO.:
5.3



NOTES:

- DETAILS ARE FOR STRUCTURAL INSTALLATION PURPOSES ONLY. ALL OTHER DETAILS ARE TO BE REFERENCED TO THE ARCHITECTURAL DRAWINGS AND ENVELOPE DETAILS. CASCADIA WINDOWS & DOORS NEITHER APPROVES NOR DISAPPROVES THE ENVELOPE DETAILS OR STRUCTURE OF THE BUILDING.
- INSTALLERS TO ENSURE THAT WINDOWS & DOORS ARE INSTALLED LEVEL, PLUMB & SQUARE WITH ALL APPROPRIATE FASTENING & SHIMMING.
- REFER TO BUILDING ENVELOPE DETAILS FOR MEMBRANING, SEQUENCING, FINISHING & SEALING INSTRUCTIONS.
- BACKER RODS BEHIND SEALANT BEADS IN GLAZING POCKET ARE A DISCRETIONARY COMPONENT AND ARE REQUIRED ONLY WHEN GAP BETWEEN GLASS AND WINDOW FRAME EXCEEDS APPROXIMATELY 1/8".
- SEE ADDITIONAL COUPLING INSTRUCTIONS WHEN COUPLING IS REQUIRED.

LEGEND

- (XA1) #10 X 1 1/2" STAINLESS STEEL SELF DRILLING SCREWS @ 6" O.C. OR AS NOTED. BY OTHERS
- (XA2) #10 X 3/4" STAINLESS STEEL SELF DRILLING SCREWS @ 6" O.C. BY OTHERS
- (B1) EXTRUDED ALUMINUM UNIVERSAL ANCHOR CLIP BY CASCADIA. SPACING PER ATTACHED GUIDE.
- (B2) CONTINUOUS ALUMINUM SILL ANGLE & COVER CAP BY CASCADIA
- (B3) EXTRUDED ALUMINUM FLASHING ATTACHMENT ANGLE BY CASCADIA.
- (XC1) SEALANT BEAD BETWEEN MEMBRANE AND FRAME BY OTHERS
- (XC2) ROD & SEALANT BY OTHERS
- (XC3) SEALANT BEAD BY OTHERS
- (XD1) PVC SHIMS - 8" O.C. & UNDER EACH VERTICAL. BY OTHERS
- (X1) METAL FLASHING BY OTHERS
- (X2) INTERIOR FINISHES BY OTHERS

PROJECT TITLE:

UNIVERSAL &
ALUMINUM
DOOR INSERTS

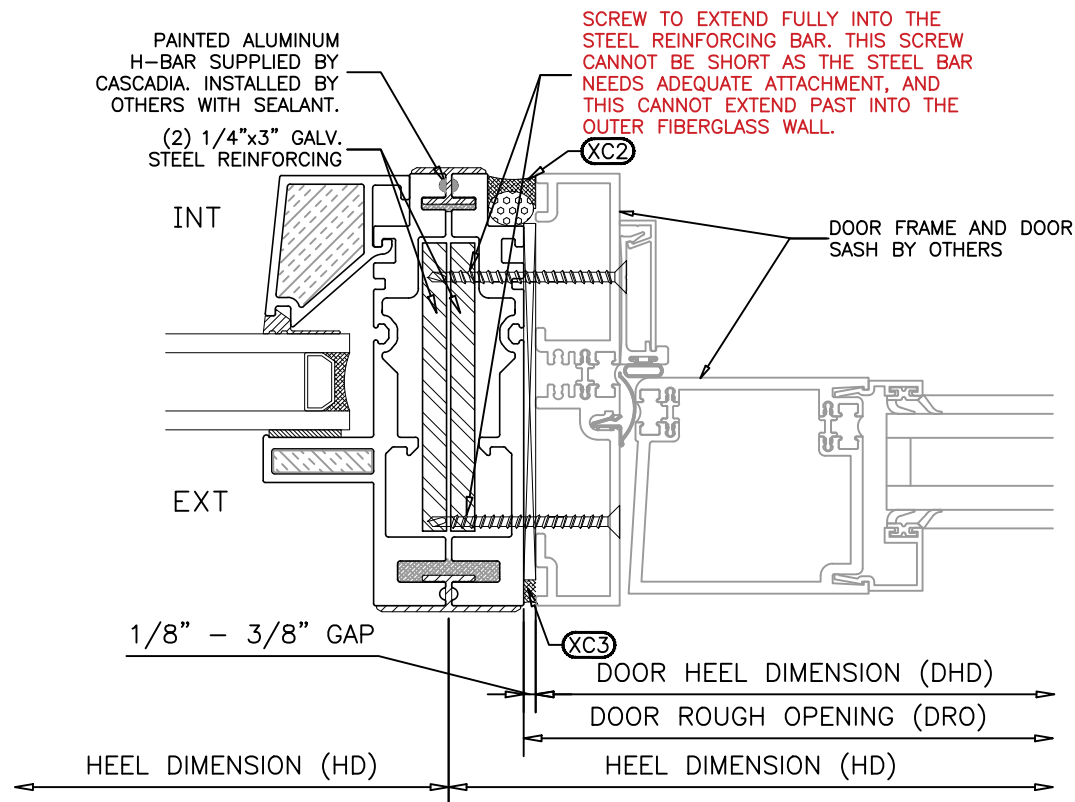
ISSUE	DESCRIPTION	DATE
1	1ST SUBMITTAL	AUG. 28/2025

DRAWING
TITLE:

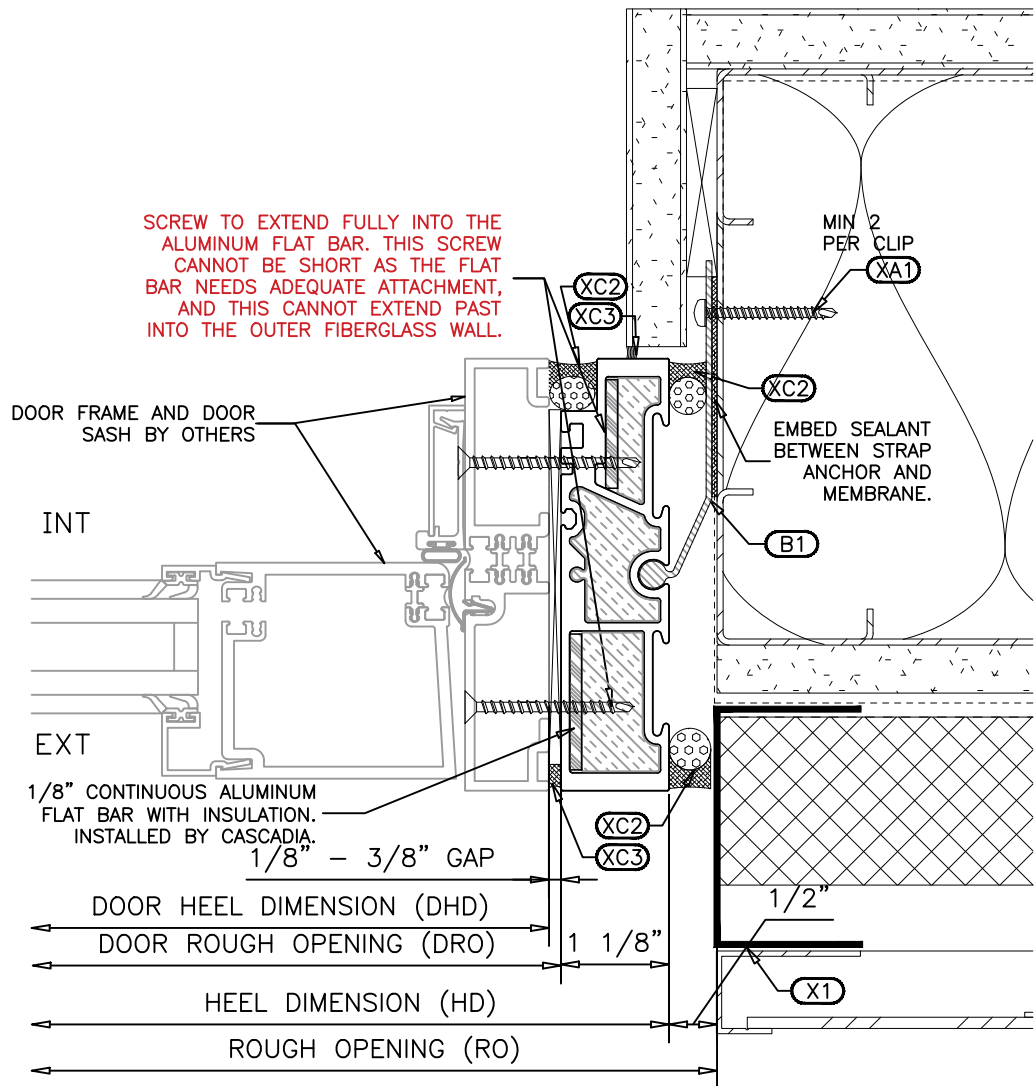
INSTALLATION
DETAILS

SCALE: N.T.S.
DATE: AUG. 28/2025
DRAWN BY: RZ
PROJECT #: XXXX

DRAWING NO.:
5.4



7 TYPICAL DOOR COUPLER
INT. GLAZED UNIVERSAL - INSERT BY OTHERS



8 TYPICAL DOOR JAMB
INT. GLAZED UNIVERSAL - INSERT BY OTHERS

- NOTES:
- DETAILS ARE FOR STRUCTURAL INSTALLATION PURPOSES ONLY. ALL OTHER DETAILS ARE TO BE REFERENCED TO THE ARCHITECTURAL DRAWINGS AND ENVELOPE DETAILS. CASCADIA WINDOWS & DOORS NEITHER APPROVES NOR DISAPPROVES THE ENVELOPE DETAILS OR STRUCTURE OF THE BUILDING.
 - INSTALLERS TO ENSURE THAT WINDOWS & DOORS ARE INSTALLED LEVEL, PLUMB & SQUARE WITH ALL APPROPRIATE FASTENING & SHIMMING.
 - REFER TO BUILDING ENVELOPE DETAILS FOR MEMBRANING, SEQUENCING, FINISHING & SEALING INSTRUCTIONS.
 - BACKER RODS BEHIND SEALANT BEADS IN GLAZING POCKET ARE A DISCRETIONARY COMPONENT AND ARE REQUIRED ONLY WHEN GAP BETWEEN GLASS AND WINDOW FRAME EXCEEDS APPROXIMATELY 1/8".
 - SEE ADDITIONAL COUPLING INSTRUCTIONS WHEN COUPLING IS REQUIRED.