

R.O.

FRAME SIZE

EXT

INT

TRIPLE GLAZED  
SLIDE-IN DOOR

**PATENTED**

*NOTE: THIS DRAFT DETAIL IS FOR GENERAL ARRANGEMENT PURPOSES ONLY, AND DOES NOT NECESSARILY REPRESENT A DETAIL THAT IS APPROPRIATE FOR A SPECIFIC PROJECT. PRODUCTS AND ACCESSORIES PROVIDED BY CASCADIA MUST BE CONFIRMED FOR SPECIFIC PROJECTS.*

**NOTE:** ANCHOR CLIPS AT HEAD, SILL AND JAMBS ARE INTERMITTENT

**CASCADIA WINDOWS LTD.**  
#101-5350 275TH STREET  
LANGLEY, BC, CANADA V4W 0C1

DRAWING TITLE: **UNIVERSAL SERIES © - SLIDE-IN DOOR HEAD**  
**RAINSCREEN WALL ASSEMBLY, EXTERIOR INSULATION**

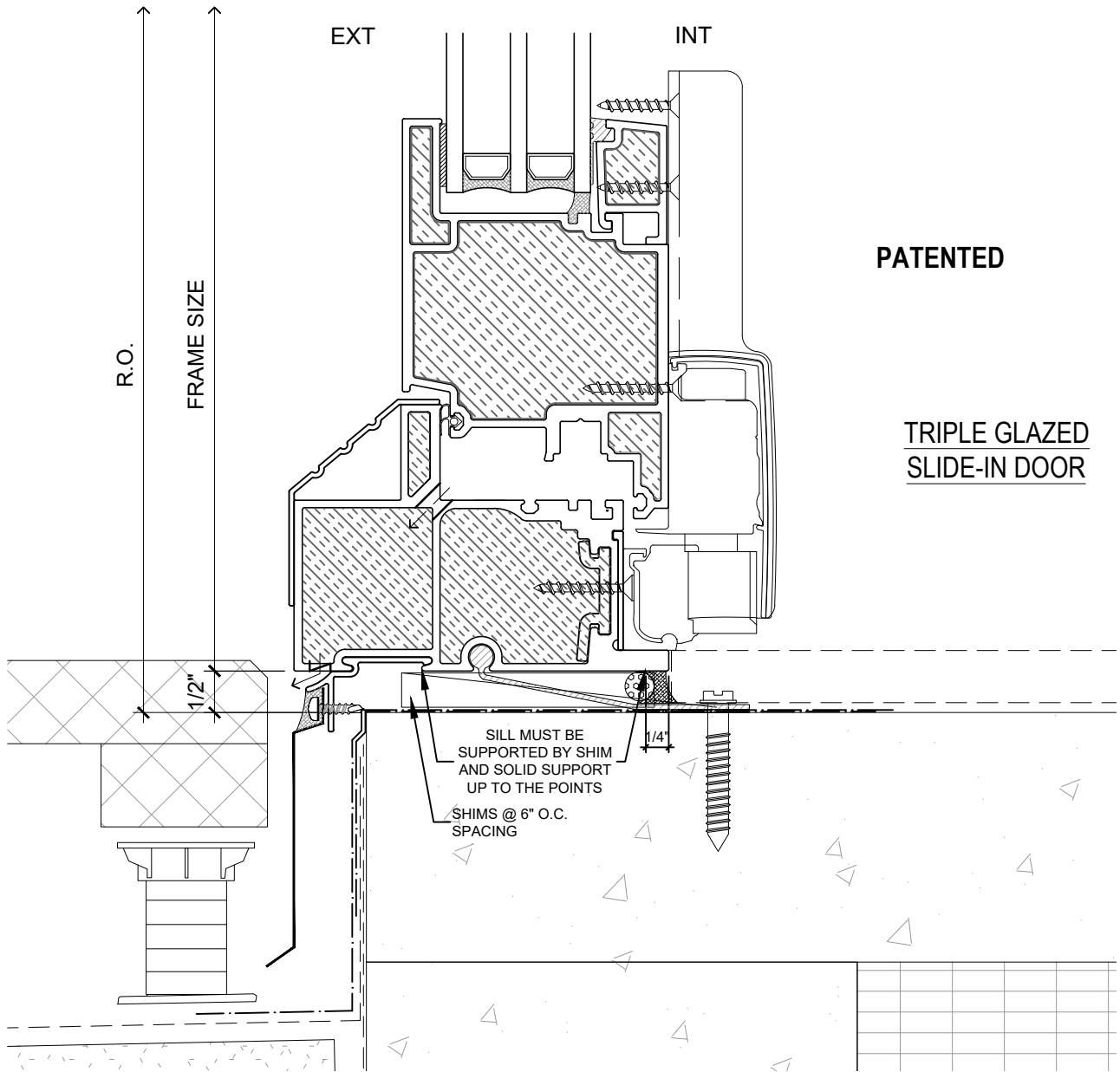
DRAWING NO.: **D-1.01**

SCALE: 6" = 1'-0"

PATENTED

DATE: 13 MARCH, 2025

DRAWN BY: RZ



**NOTE:** THIS DRAFT DETAIL IS FOR GENERAL ARRANGEMENT PURPOSES ONLY, AND DOES NOT NECESSARILY REPRESENT A DETAIL THAT IS APPROPRIATE FOR A SPECIFIC PROJECT. PRODUCTS AND ACCESSORIES PROVIDED BY CASCADIA MUST BE CONFIRMED FOR SPECIFIC PROJECTS.

**NOTE:** ANCHOR CLIPS AT HEAD, SILL AND JAMBS ARE INTERMITTENT

**CASCADIA WINDOWS LTD.**  
 #101-5350 275TH STREET  
 LANGLEY, BC, CANADA V4W 0C1

DRAWING TITLE: **UNIVERSAL SERIES <sup>®</sup> - SLIDE-IN DOOR SILL**  
 RAINSCREEN WALL ASSEMBLY, EXTERIOR INSULATION

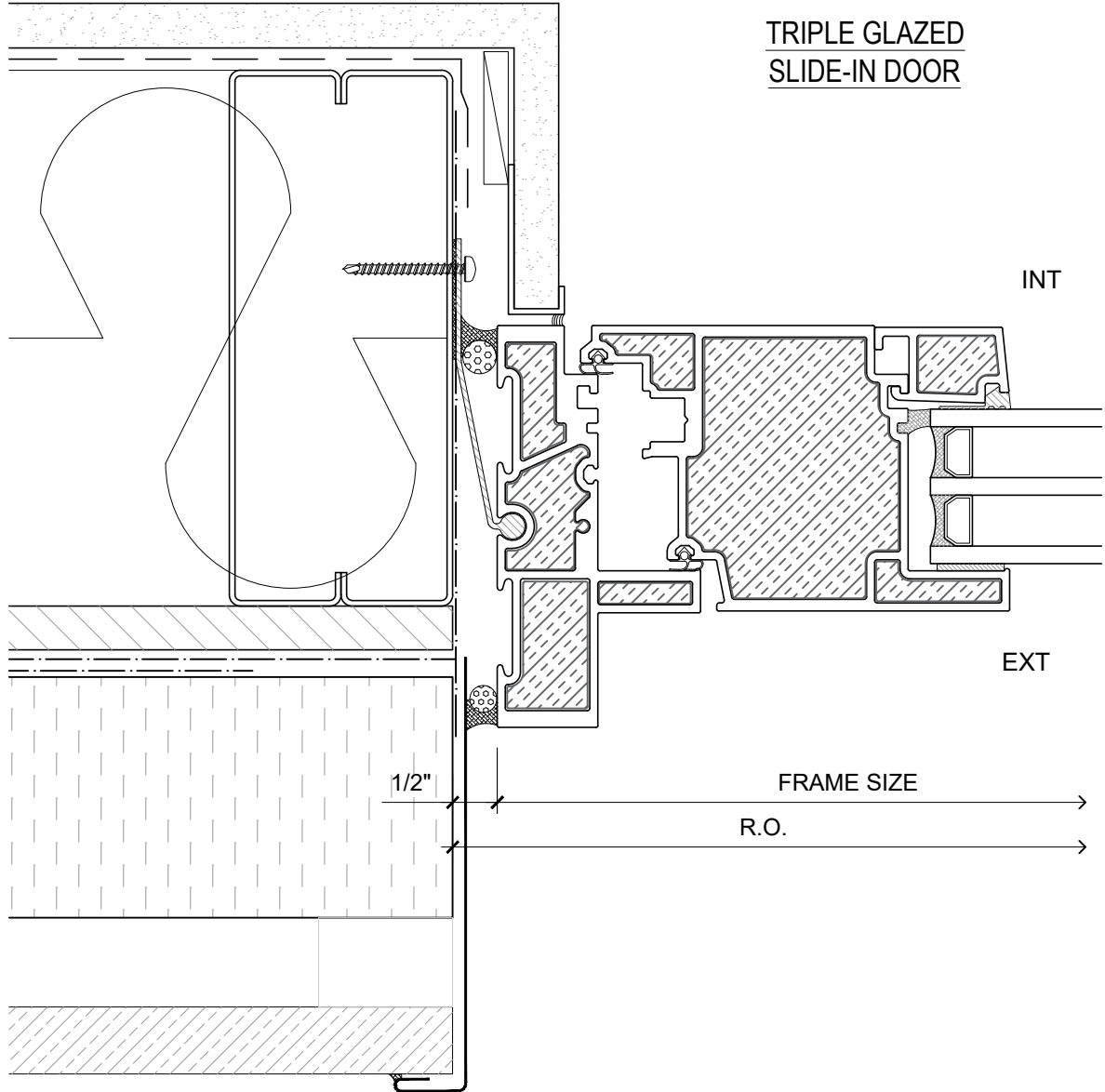
DRAWING NO.: **D-1.02**

SCALE: 6" = 1'-0"

PATENTED

DATE: 13 MARCH, 2025

DRAWN BY: RZ



TRIPLE GLAZED  
SLIDE-IN DOOR

INT

EXT

1/2"

FRAME SIZE

R.O.

PATENTED

**NOTE:** THIS DRAFT DETAIL IS FOR GENERAL ARRANGEMENT PURPOSES ONLY, AND DOES NOT NECESSARILY REPRESENT A DETAIL THAT IS APPROPRIATE FOR A SPECIFIC PROJECT. PRODUCTS AND ACCESSORIES PROVIDED BY CASCADIA MUST BE CONFIRMED FOR SPECIFIC PROJECTS.

**NOTE:** ANCHOR CLIPS AT HEAD, SILL AND JAMBS ARE INTERMITTENT

CASCADIA WINDOWS LTD.  
#101-5350 275TH STREET  
LANGLEY, BC, CANADA V4W 0C1

DRAWING TITLE: UNIVERSAL SERIES ® - SLIDE-IN DOOR JAMB  
RAINSCREEN WALL ASSEMBLY, EXTERIOR INSULATION

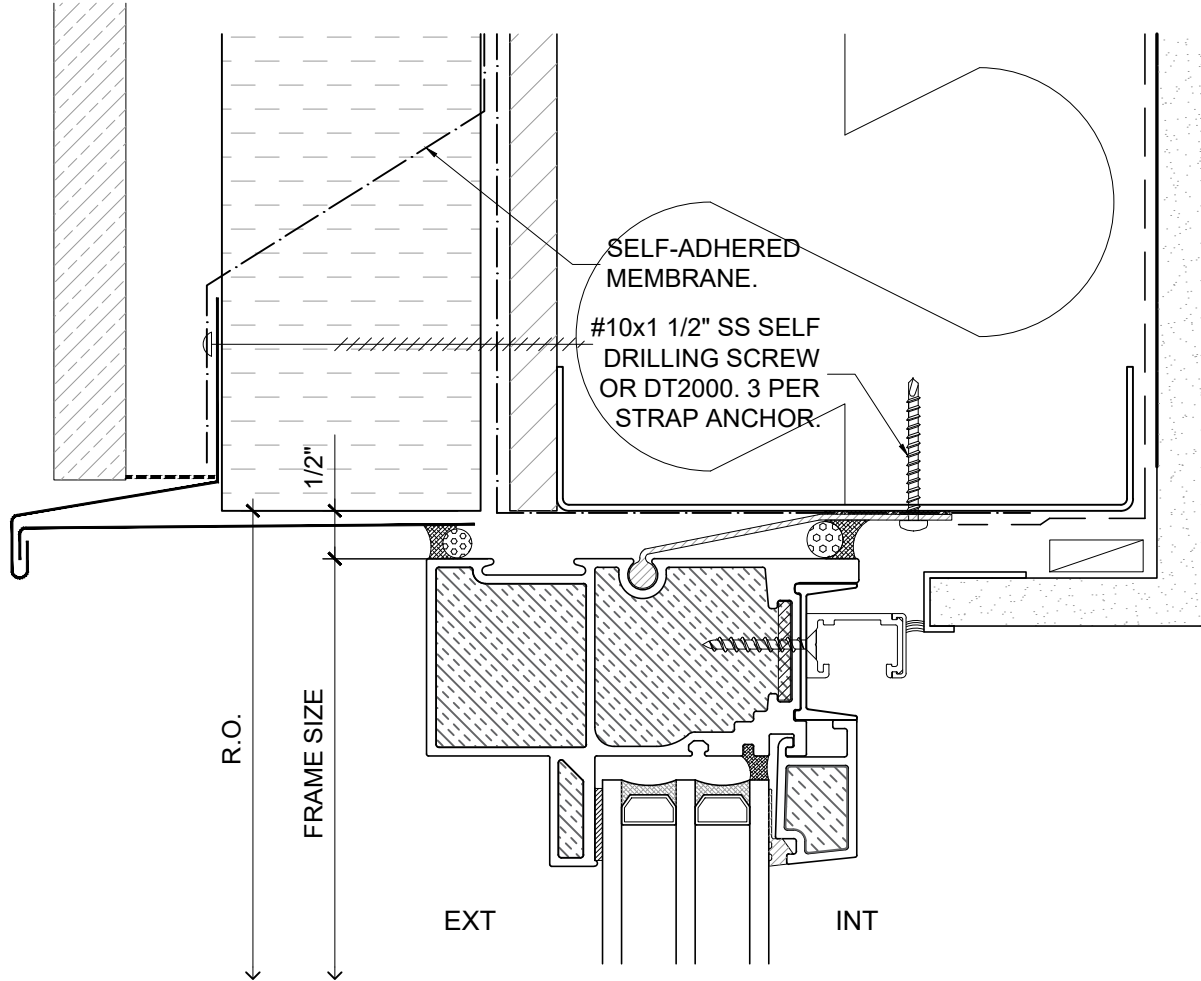
DRAWING NO.:  
D-1.03

SCALE: 6" = 1'-0"

PATENTED

DATE: 13 MARCH, 2025

DRAWN BY: RZ



TRIPLE GLAZED  
SLIDE-IN DOOR SIDELITE

PATENTED

*NOTE: THIS DRAFT DETAIL IS FOR GENERAL ARRANGEMENT PURPOSES ONLY, AND DOES NOT NECESSARILY REPRESENT A DETAIL THAT IS APPROPRIATE FOR A SPECIFIC PROJECT. PRODUCTS AND ACCESSORIES PROVIDED BY CASCADIA MUST BE CONFIRMED FOR SPECIFIC PROJECTS.*

**NOTE:** ANCHOR CLIPS AT HEAD, SILL AND JAMBS ARE INTERMITTENT

CASCADIA WINDOWS LTD.  
#101-5350 275TH STREET  
LANGLEY, BC, CANADA V4W 0C1

DRAWING TITLE: **UNIVERSAL SERIES © - SLIDE-IN DOOR HEAD**  
RAINSCREEN WALL ASSEMBLY, EXTERIOR INSULATION

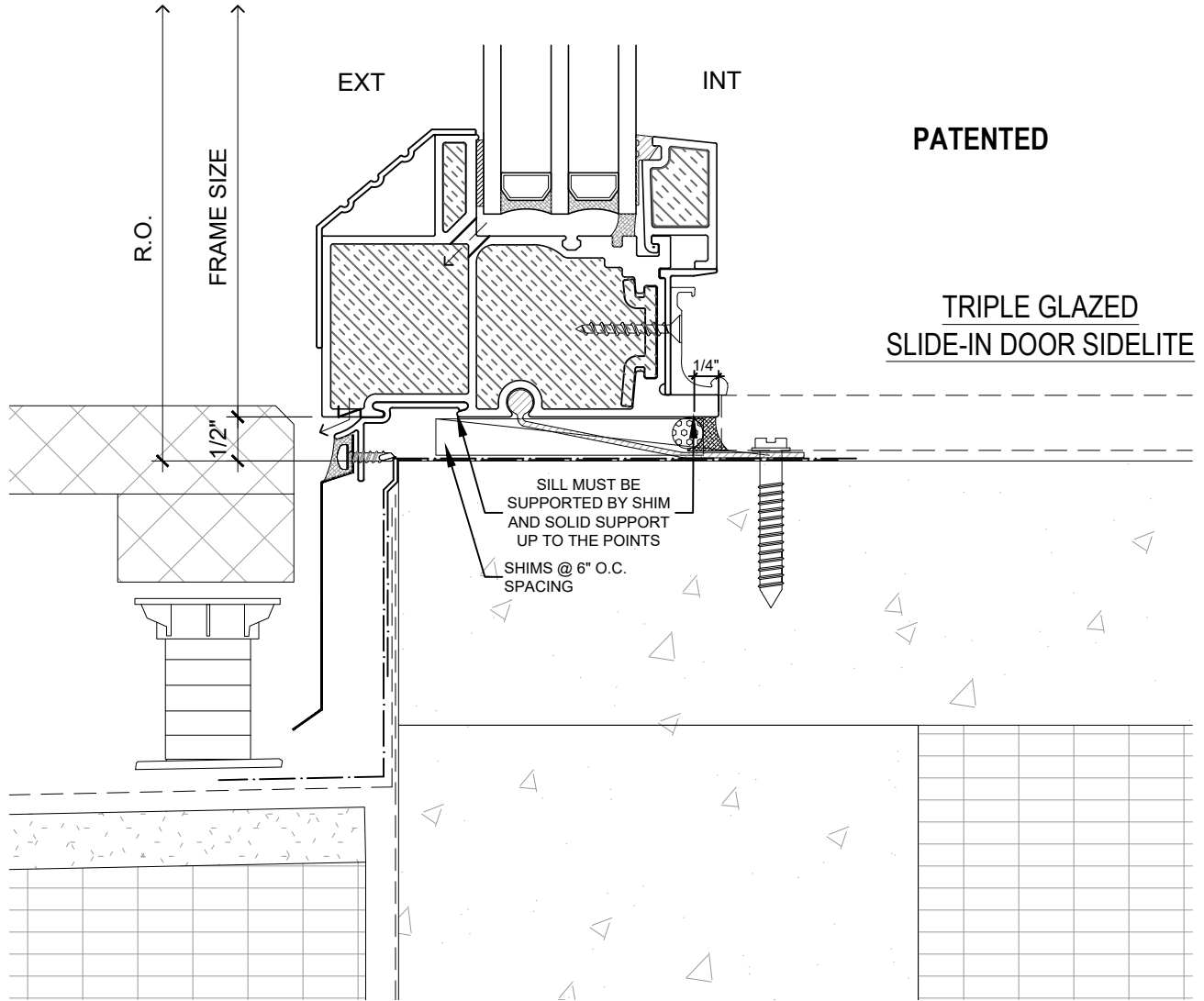
DRAWING NO.:  
**D-1.04**

SCALE: 6" = 1'-0"

PATENTED

DATE: 13 MARCH, 2025

DRAWN BY: RZ



**NOTE:** THIS DRAFT DETAIL IS FOR GENERAL ARRANGEMENT PURPOSES ONLY, AND DOES NOT NECESSARILY REPRESENT A DETAIL THAT IS APPROPRIATE FOR A SPECIFIC PROJECT. PRODUCTS AND ACCESSORIES PROVIDED BY CASCADIA MUST BE CONFIRMED FOR SPECIFIC PROJECTS.

**NOTE:** ANCHOR CLIPS AT HEAD, SILL AND JAMBS ARE INTERMITTENT

**CASCADIA WINDOWS LTD.**  
 #101-5350 275TH STREET  
 LANGLEY, BC, CANADA V4W 0C1

DRAWING TITLE: **UNIVERSAL SERIES <sup>®</sup> - SLIDE-IN DOOR SILL**  
**RAINSCREEN WALL ASSEMBLY, EXTERIOR INSULATION**

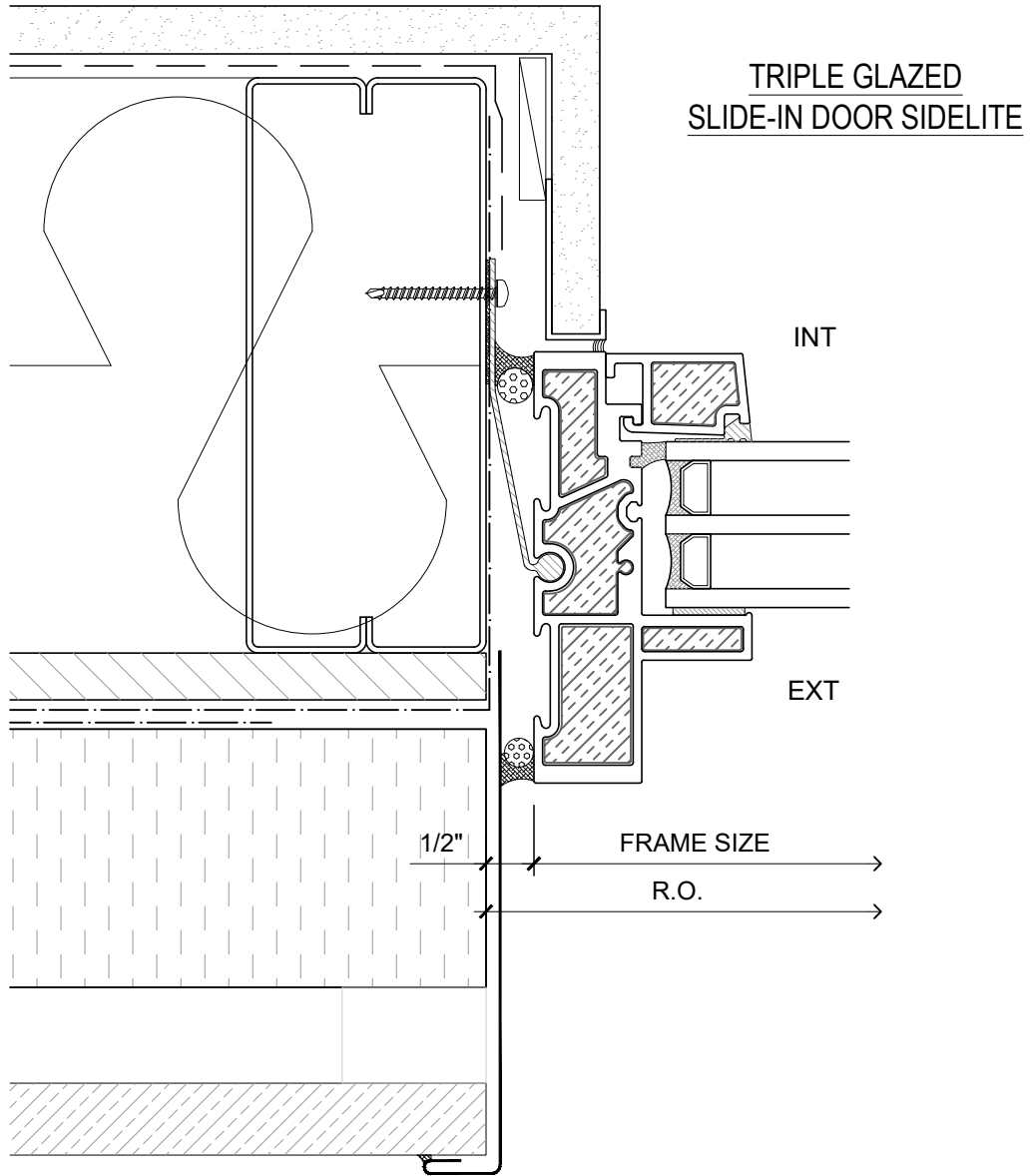
DRAWING NO.:  
**D-1.05**

SCALE: 6" = 1'-0"

PATENTED

DATE: 13 MARCH, 2025

DRAWN BY: RZ



**PATENTED**

**NOTE:** THIS DRAFT DETAIL IS FOR GENERAL ARRANGEMENT PURPOSES ONLY, AND DOES NOT NECESSARILY REPRESENT A DETAIL THAT IS APPROPRIATE FOR A SPECIFIC PROJECT. PRODUCTS AND ACCESSORIES PROVIDED BY CASCADIA MUST BE CONFIRMED FOR SPECIFIC PROJECTS.

**NOTE:** ANCHOR CLIPS AT HEAD, SILL AND JAMBS ARE INTERMITTENT

**CASCADIA WINDOWS LTD.**  
 #101-5350 275TH STREET  
 LANGLEY, BC, CANADA V4W 0C1

DRAWING TITLE: **UNIVERSAL SERIES ® - SLIDE-IN DOOR JAMB**  
**RAINSCREEN WALL ASSEMBLY, EXTERIOR INSULATION**

DRAWING NO.:  
**D-1.06**

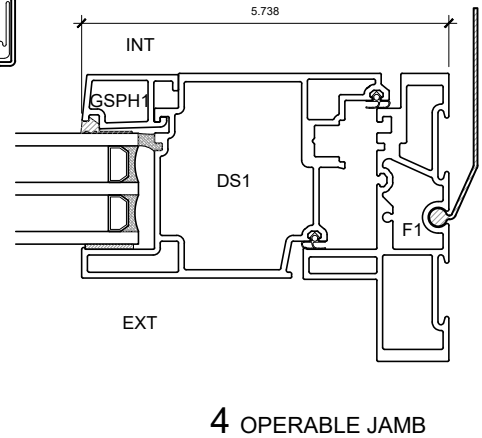
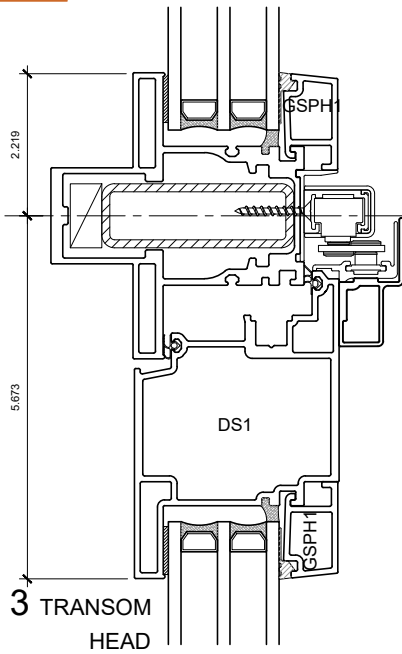
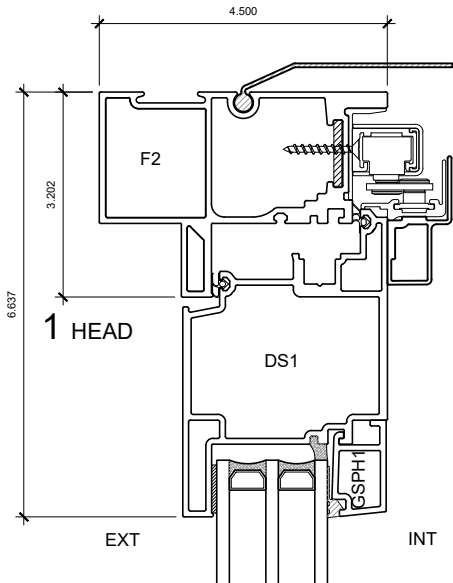
SCALE: 6" = 1'-0"

PATENTED

DATE: 13 MARCH, 2025

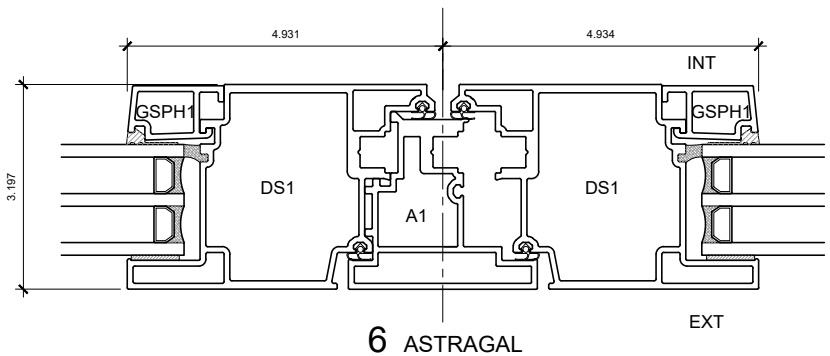
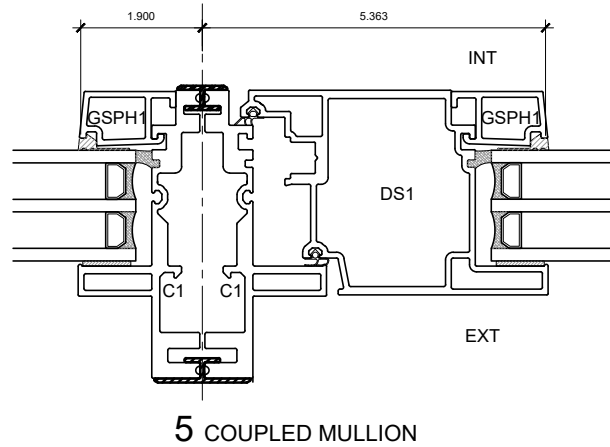
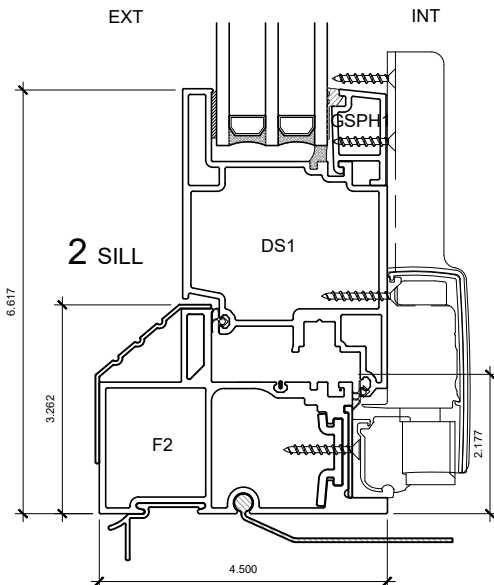
DRAWN BY: RZ

NEW: ENVIRONMENTAL PRODUCT DECLARATIONS (EPDs) NOW AVAILABLE



TRIPLE GLAZED  
SLIDE-IN DOOR

PATENTED



**NOTE:** THIS DRAFT DETAIL IS FOR GENERAL ARRANGEMENT PURPOSES ONLY, AND DOES NOT NECESSARILY REPRESENT A DETAIL THAT IS APPROPRIATE FOR A SPECIFIC PROJECT. PRODUCTS AND ACCESSORIES PROVIDED BY CASCADIA MUST BE CONFIRMED FOR SPECIFIC PROJECTS.

**NOTE:** ANCHOR CLIPS AT HEAD, SILL AND JAMBS ARE INTERMITTENT

CASCADIA WINDOWS LTD.  
#101-5350 275TH STREET  
LANGLEY, BC, CANADA V4W 0C1

DRAWING  
TITLE:

UNIVERSAL SERIES <sup>®</sup> - SLIDE-IN DOOR  
PRODUCT DRAWING

DRAWING NO.:

D-2.01

SCALE: 4" = 1'-0"

PATENTED

DATE: 13 MARCH, 2025

DRAWN BY: RZ