

**NOTE:** THIS DRAFT DETAIL IS FOR GENERAL ARRANGEMENT PURPOSES ONLY, AND DOES NOT NECESSARILY REPRESENT A DETAIL THAT IS APPROPRIATE FOR A SPECIFIC PROJECT. PRODUCTS AND ACCESSORIES PROVIDED BY CASCADIA MUST BE CONFIRMED FOR SPECIFIC PROJECTS.

**NOTE:** NAIL FLANGE IS CONTINUOUS

CASCADIA WINDOWS LTD.  
#101-5350 275TH STREET  
LANGLEY, BC, CANADA V4W 0C1

DRAWING TITLE: **UNIVERSAL SERIES ® - WINDOW HEAD+SILL**  
**STANDARD NAIL FLANGE INSTALLATION (CW-NF2)**

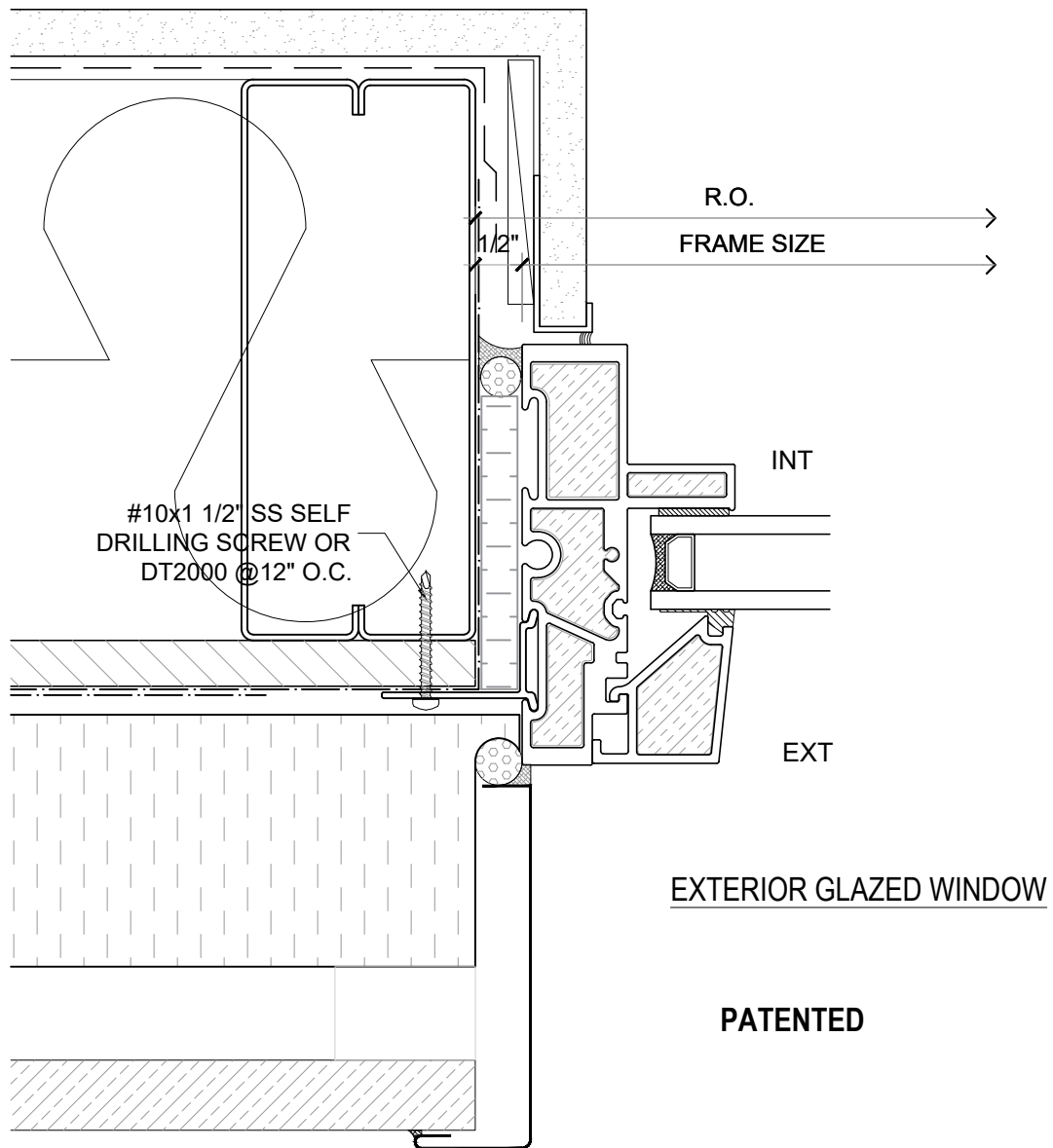
DRAWING NO.:  
**NF-1.01**

SCALE: 6" = 1'-0"

PATENTED

DATE: 26 AUGUST, 2020

DRAWN BY: CP



**NOTE:** THIS DRAFT DETAIL IS FOR GENERAL ARRANGEMENT PURPOSES ONLY, AND DOES NOT NECESSARILY REPRESENT A DETAIL THAT IS APPROPRIATE FOR A SPECIFIC PROJECT. PRODUCTS AND ACCESSORIES PROVIDED BY CASCADIA MUST BE CONFIRMED FOR SPECIFIC PROJECTS.

**NOTE:** NAIL FLANGE IS CONTINUOUS

CASCADIA WINDOWS LTD.  
#101-5350 275TH STREET  
LANGLEY, BC, CANADA V4W 0C1

DRAWING  
TITLE:

UNIVERSAL SERIES  - WINDOW JAMB  
STANDARD NAIL FLANGE INSTALLATION (CW-NF1)

DRAWING NO.:

NF-1.02

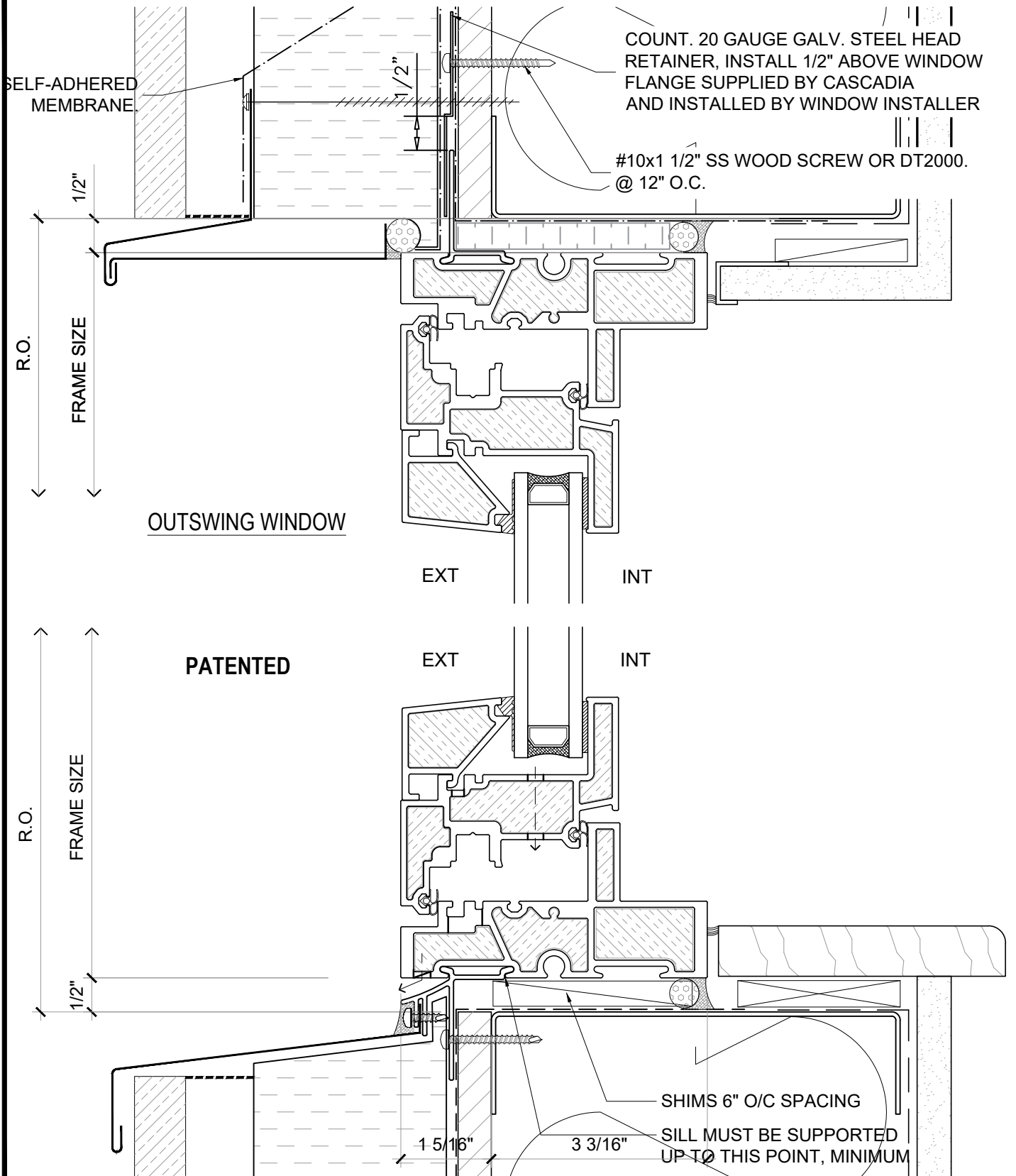
SCALE: 6" = 1'-0"

PATENTED

DATE: 26 AUGUST, 2020

DRAWN BY: CP

NEW: ENVIRONMENTAL PRODUCT DECLARATIONS (EPDs) NOW AVAILABLE



**NOTE:** THIS DRAFT DETAIL IS FOR GENERAL ARRANGEMENT PURPOSES ONLY, AND DOES NOT NECESSARILY REPRESENT A DETAIL THAT IS APPROPRIATE FOR A SPECIFIC PROJECT. PRODUCTS AND ACCESSORIES PROVIDED BY CASCADIA MUST BE CONFIRMED FOR SPECIFIC PROJECTS.

**NOTE:** NAIL FLANGE IS CONTINUOUS

CASCADIA WINDOWS LTD.  
#101-5350 275TH STREET  
LANGLEY, BC, CANADA V4W 0C1

DRAWING TITLE: **UNIVERSAL SERIES ® - WINDOW HEAD+SILL**  
**STANDARD NAIL FLANGE INSTALLATION (CW-NF2)**

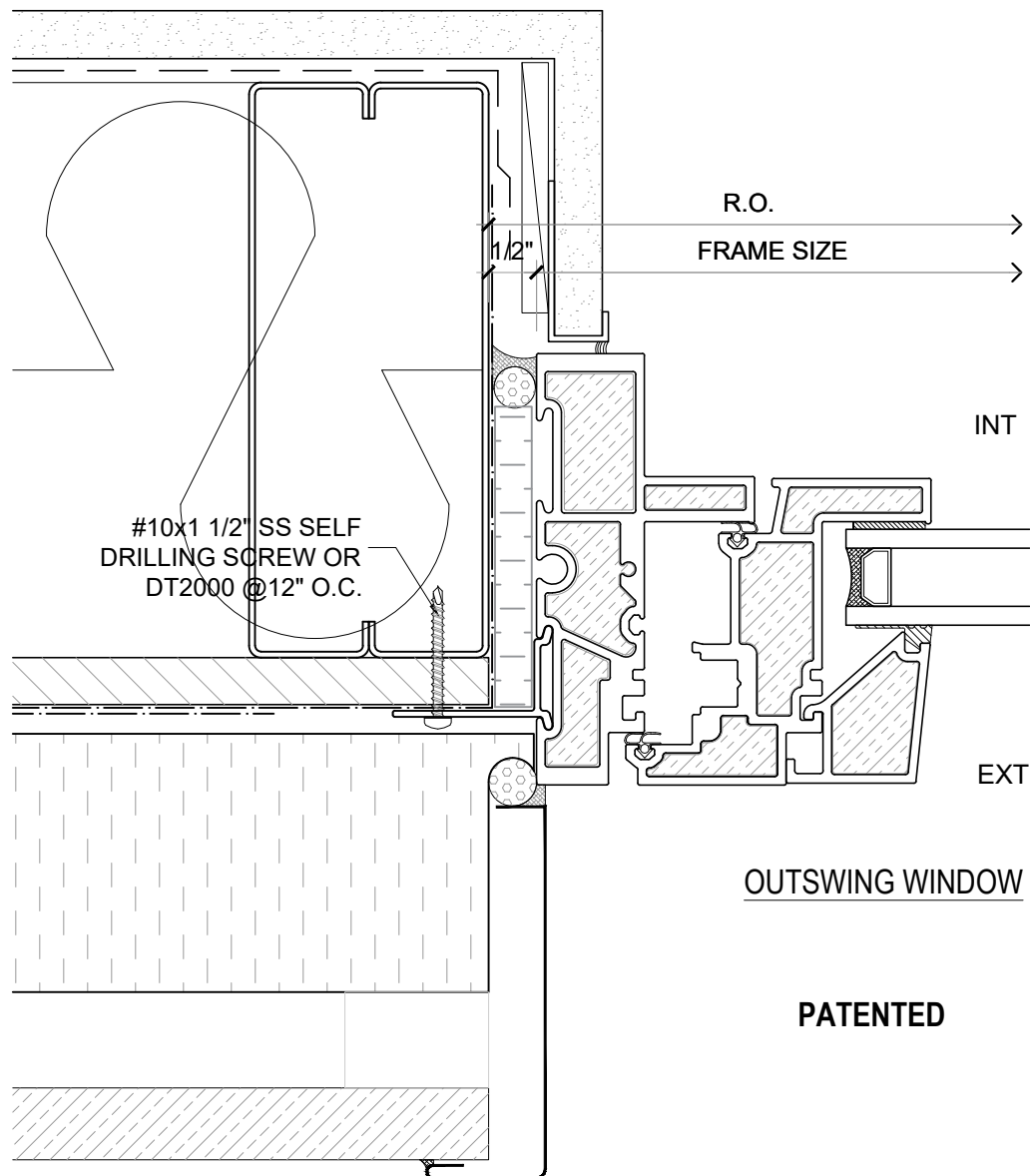
DRAWING NO.:  
**NF-1.03**

SCALE: 6" = 1'-0"

PATENTED

DATE: 26 AUGUST, 2020

DRAWN BY: CP



**NOTE:** THIS DRAFT DETAIL IS FOR GENERAL ARRANGEMENT PURPOSES ONLY, AND DOES NOT NECESSARILY REPRESENT A DETAIL THAT IS APPROPRIATE FOR A SPECIFIC PROJECT. PRODUCTS AND ACCESSORIES PROVIDED BY CASCADIA MUST BE CONFIRMED FOR SPECIFIC PROJECTS.

**NOTE:** NAIL FLANGE IS CONTINUOUS

CASCADIA WINDOWS LTD.  
#101-5350 275TH STREET  
LANGLEY, BC, CANADA V4W 0C1

DRAWING  
TITLE:

UNIVERSAL SERIES <sup>®</sup> - WINDOW JAMB  
STANDARD NAIL FLANGE INSTALLATION (CW-NF1)

DRAWING NO.:

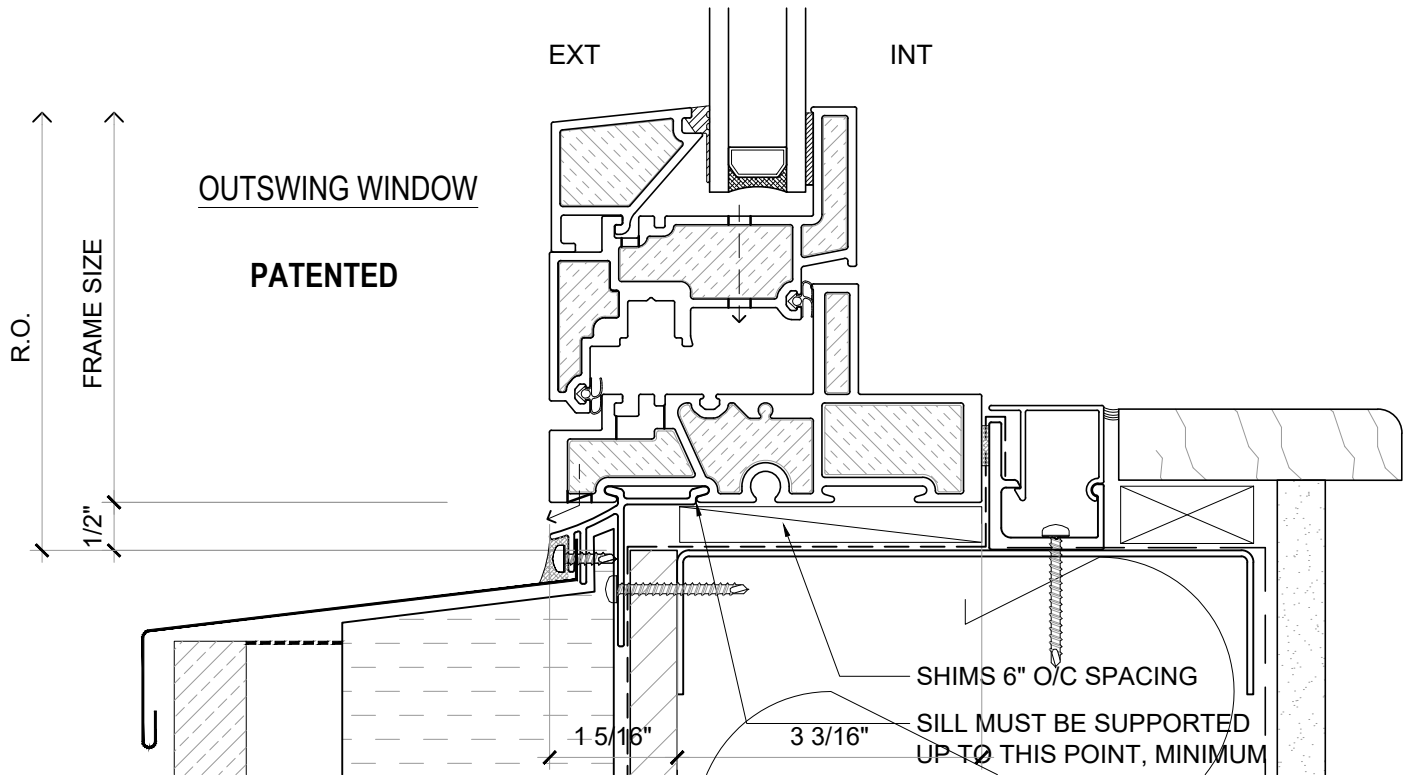
NF-1.04

SCALE: 6" = 1'-0"

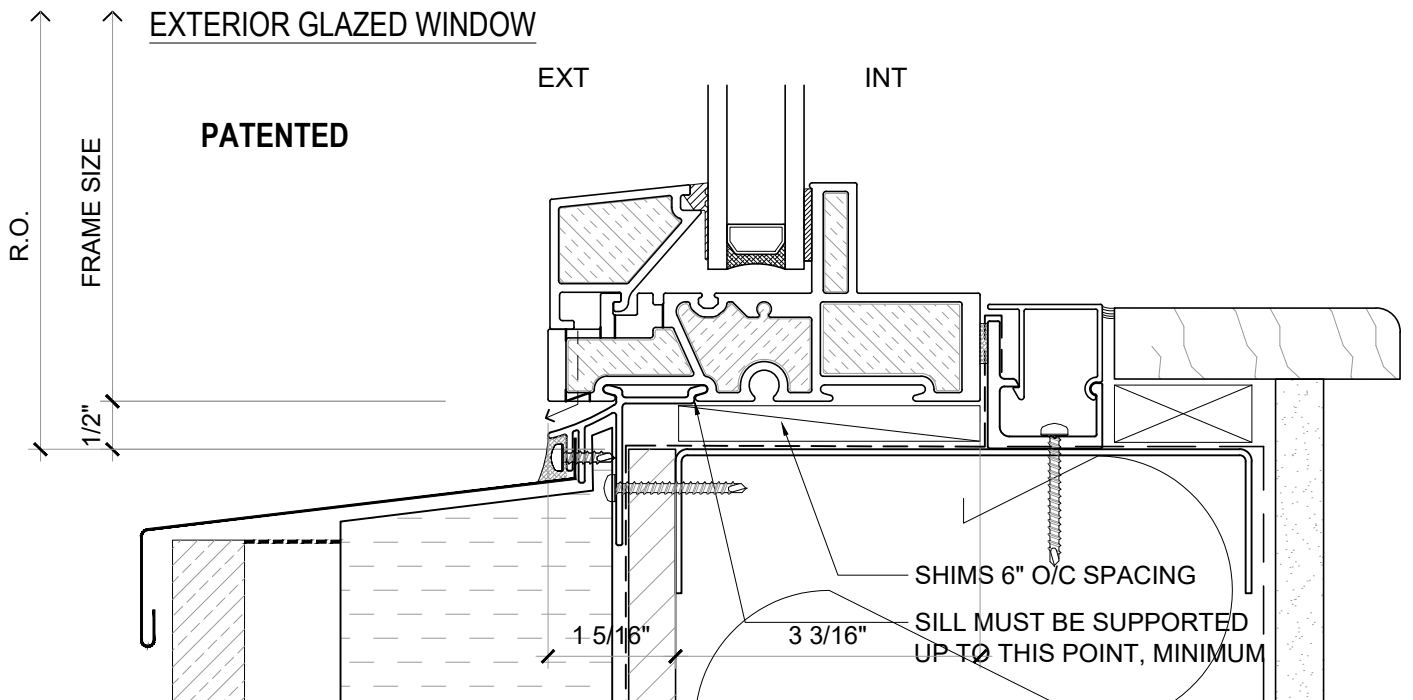
PATENTED

DATE: 26 AUGUST, 2020

DRAWN BY: CP



## ALTERNATE SILL DETAILS



**NOTE:** THIS DRAFT DETAIL IS FOR GENERAL ARRANGEMENT PURPOSES ONLY, AND DOES NOT NECESSARILY REPRESENT A DETAIL THAT IS APPROPRIATE FOR A SPECIFIC PROJECT. PRODUCTS AND ACCESSORIES PROVIDED BY CASCADIA MUST BE CONFIRMED FOR SPECIFIC PROJECTS.

**NOTE:** NAIL FLANGE IS CONTINUOUS

CASCADIA WINDOWS LTD.  
#101-5350 275TH STREET  
LANGLEY, BC, CANADA V4W 0C1

DRAWING TITLE:  
**UNIVERSAL SERIES © - ALTERNATE WINDOW SILLS**  
STANDARD NAIL FLANGE INSTALLATION (CW-NF2) & SILL ANGLE

DRAWING NO.:

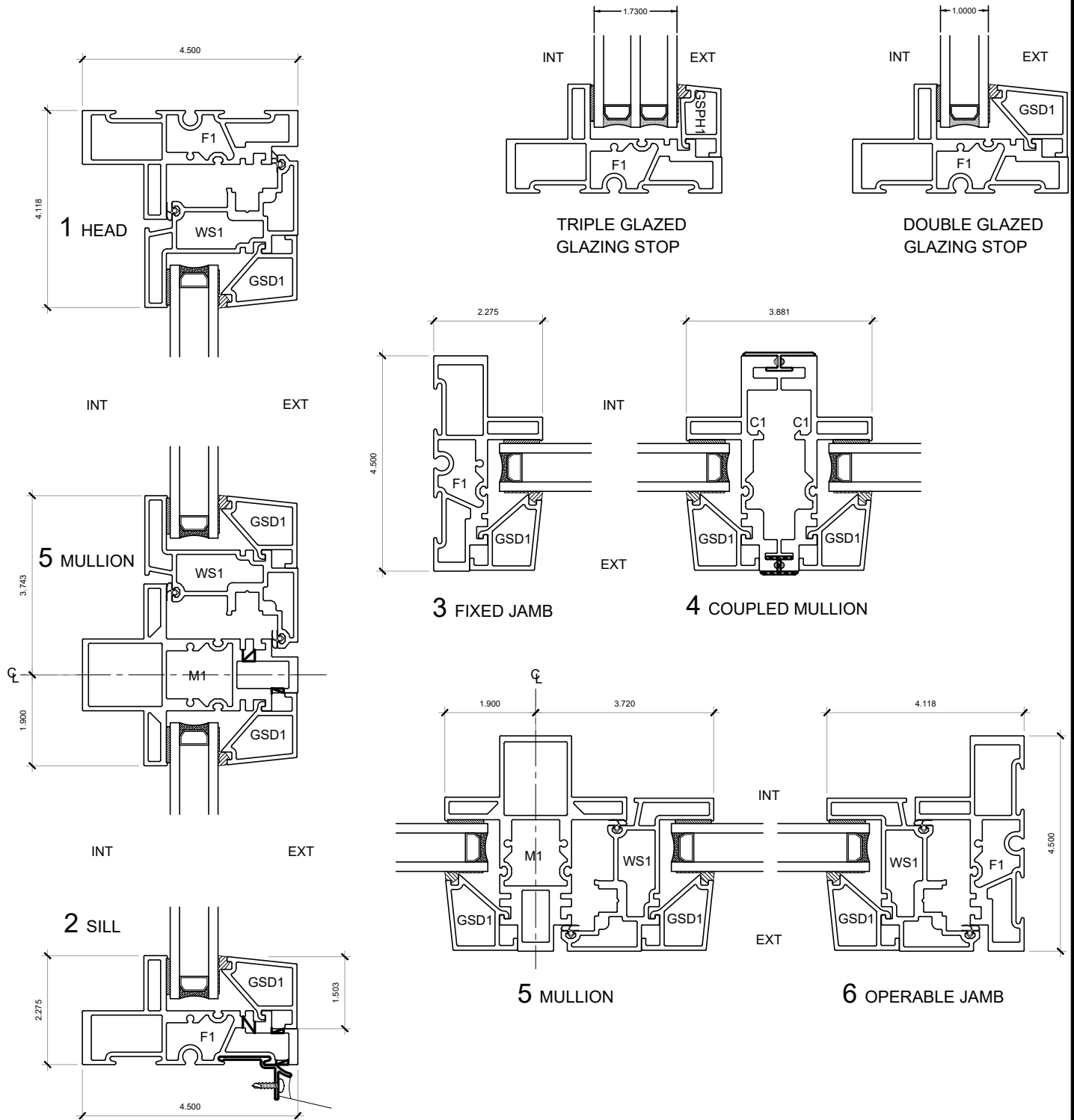
**NF-1.05**

SCALE: 6" = 1'-0"

PATENTED

DATE: 26 AUGUST, 2020

DRAWN BY: CP



**NOTE:** THIS DRAFT DETAIL IS FOR GENERAL ARRANGEMENT PURPOSES ONLY, AND DOES NOT NECESSARILY REPRESENT A DETAIL THAT IS APPROPRIATE FOR A SPECIFIC PROJECT. PRODUCTS AND ACCESSORIES PROVIDED BY CASCADIA MUST BE CONFIRMED FOR SPECIFIC PROJECTS.

**NOTE:** NAIL FLANGE IS CONTINUOUS

CASCADIA WINDOWS LTD.  
#101-5350 275TH STREET  
LANGLEY, BC, CANADA V4W 0C1

DRAWING TITLE: **UNIVERSAL SERIES ® - OUTSWING WINDOW**  
PRODUCT DRAWINGS

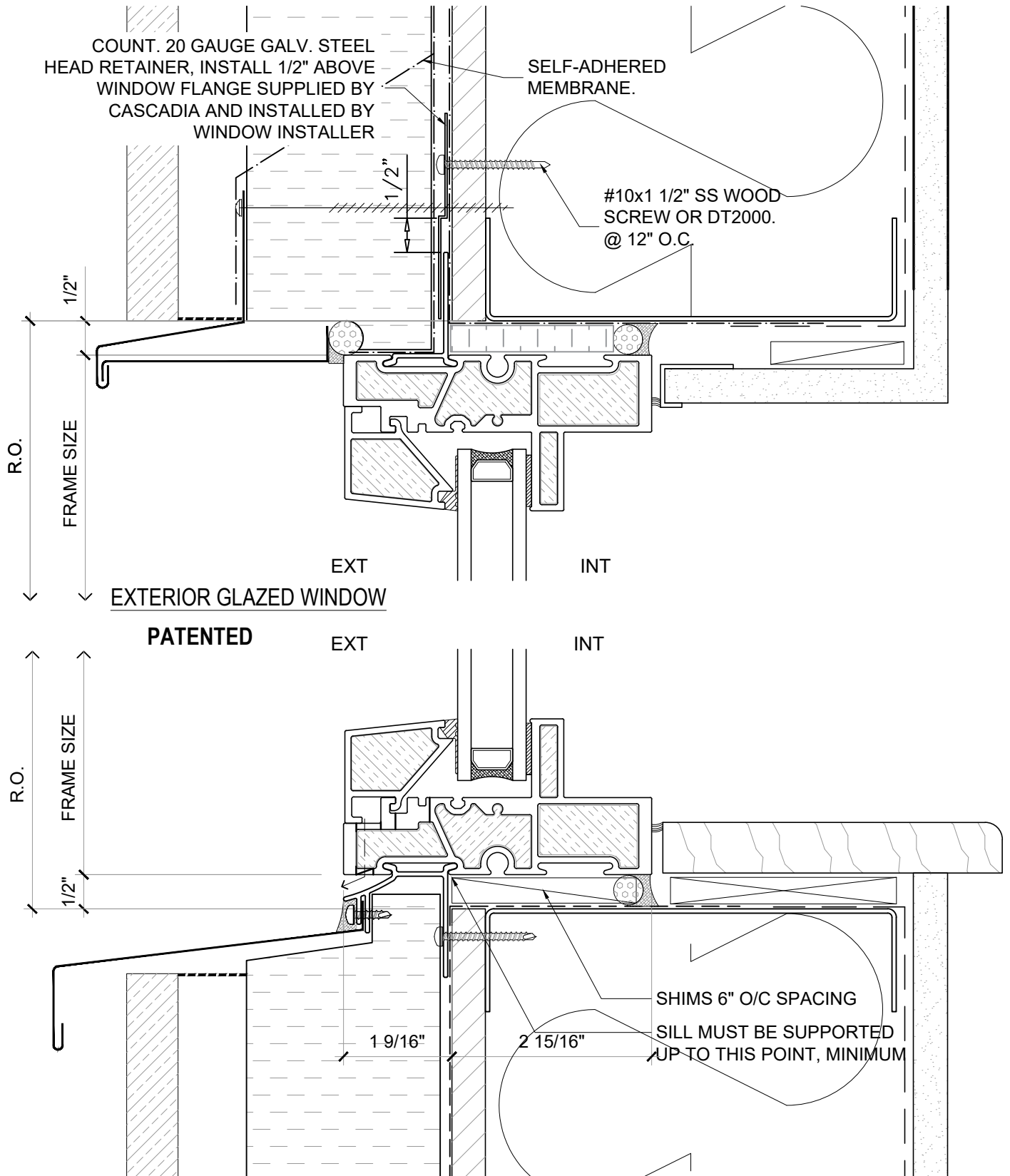
DRAWING NO.:  
**NF-2.01**

SCALE: 4" = 1'-0"

PATENTED

DATE: 26 AUGUST, 2020

DRAWN BY: CP



**NOTE:** THIS DRAFT DETAIL IS FOR GENERAL ARRANGEMENT PURPOSES ONLY, AND DOES NOT NECESSARILY REPRESENT A DETAIL THAT IS APPROPRIATE FOR A SPECIFIC PROJECT. PRODUCTS AND ACCESSORIES PROVIDED BY CASCADIA MUST BE CONFIRMED FOR SPECIFIC PROJECTS.

**NOTE:** NAIL FLANGE IS CONTINUOUS

CASCADIA WINDOWS LTD.  
#101-5350 275TH STREET  
LANGLEY, BC, CANADA V4W 0C1

DRAWING TITLE: **UNIVERSAL SERIES ® - WINDOW HEAD+SILL**  
**REVERSED NAIL FLANGE INSTALLATION (CW-NF3)**

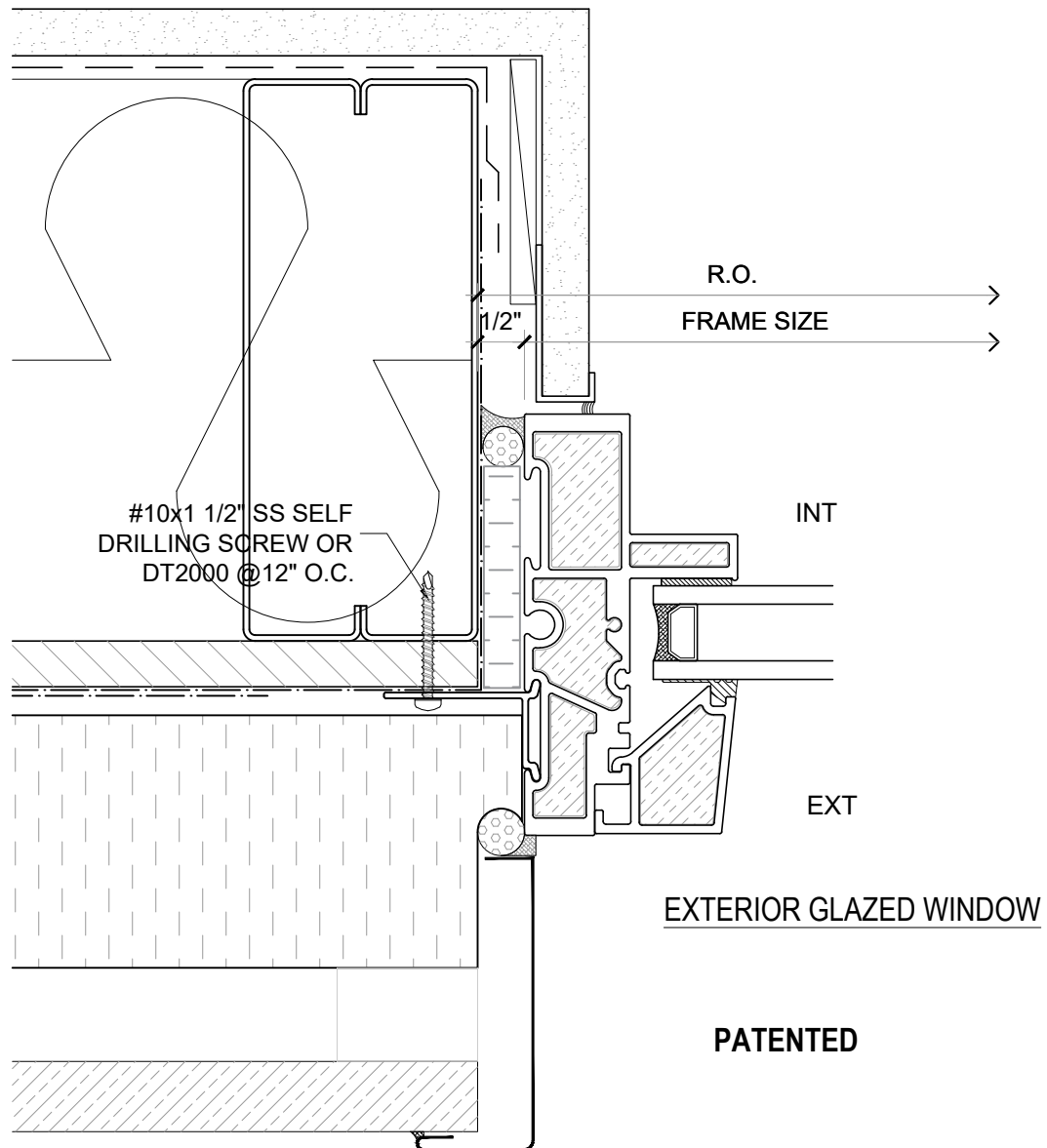
DRAWING NO.:  
**NF-1.01**

SCALE: 6" = 1'-0"

PATENTED

DATE: 26 AUGUST, 2020

DRAWN BY: CP



**NOTE:** THIS DRAFT DETAIL IS FOR GENERAL ARRANGEMENT PURPOSES ONLY, AND DOES NOT NECESSARILY REPRESENT A DETAIL THAT IS APPROPRIATE FOR A SPECIFIC PROJECT. PRODUCTS AND ACCESSORIES PROVIDED BY CASCADIA MUST BE CONFIRMED FOR SPECIFIC PROJECTS.

**NOTE:** NAIL FLANGE IS CONTINUOUS

**CASCADIA WINDOWS LTD.**  
#101-5350 275TH STREET  
LANGLEY, BC, CANADA V4W 0C1

DRAWING  
TITLE:

**UNIVERSAL SERIES ① - WINDOW JAMB**  
**REVERSED NAIL FLANGE INSTALLATION (CW-NF1)**

DRAWING NO.:

**NF-1.02**

SCALE: 6" = 1'-0"

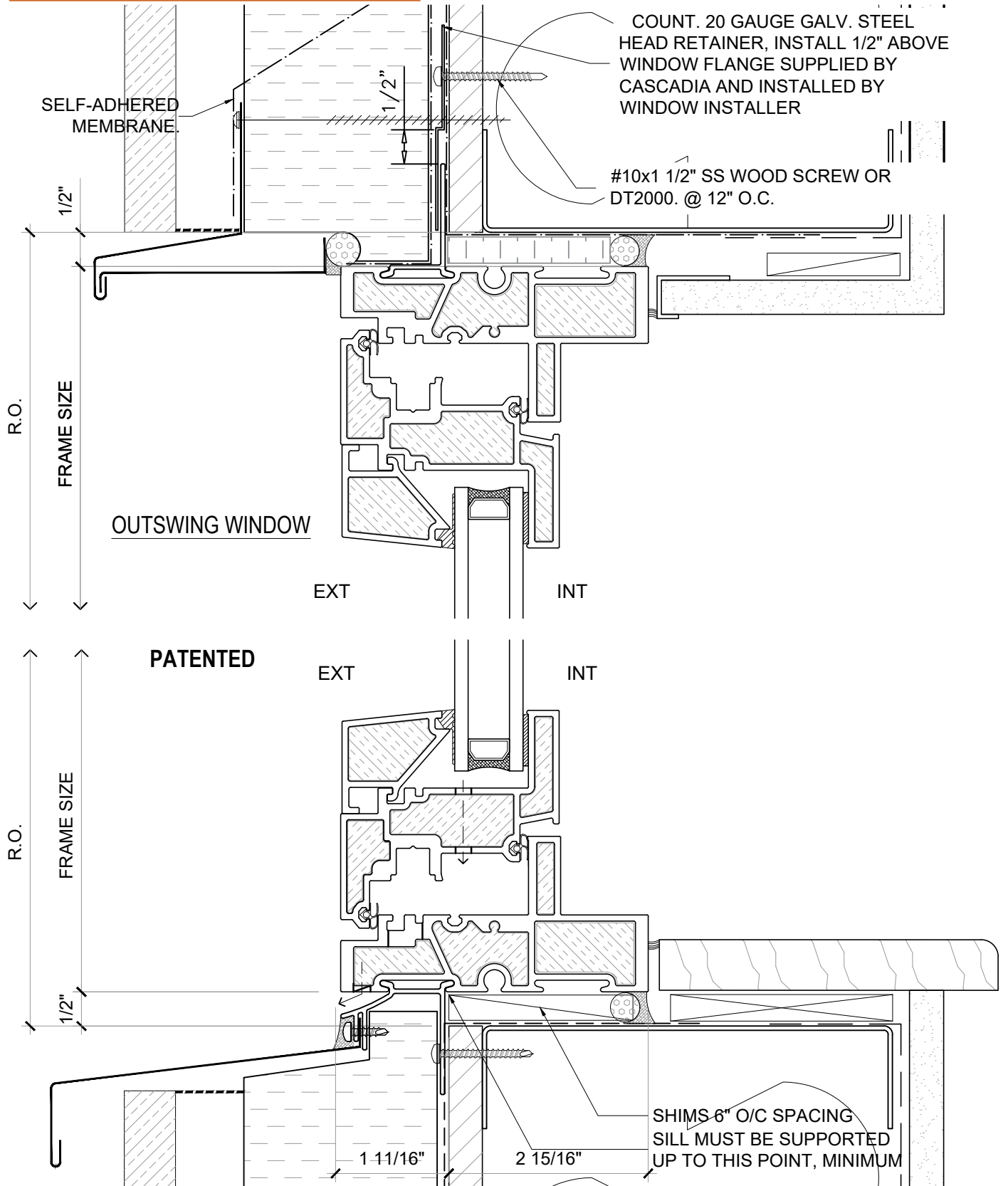
PATENTED

DATE: 26 AUGUST, 2020

DRAWN BY: CP



NEW: ENVIRONMENTAL PRODUCT DECLARATIONS (EPDs) NOW AVAILABLE



**NOTE:** THIS DRAFT DETAIL IS FOR GENERAL ARRANGEMENT PURPOSES ONLY, AND DOES NOT NECESSARILY REPRESENT A DETAIL THAT IS APPROPRIATE FOR A SPECIFIC PROJECT. PRODUCTS AND ACCESSORIES PROVIDED BY CASCADIA MUST BE CONFIRMED FOR SPECIFIC PROJECTS.

**NOTE:** NAIL FLANGE IS CONTINUOUS

CASCADIA WINDOWS LTD.  
#101-5350 275TH STREET  
LANGLEY, BC, CANADA V4W 0C1

DRAWING TITLE: **UNIVERSAL SERIES ® - WINDOW HEAD+SILL**  
**REVERSED NAIL FLANGE INSTALLATION ( CW-NF3)**

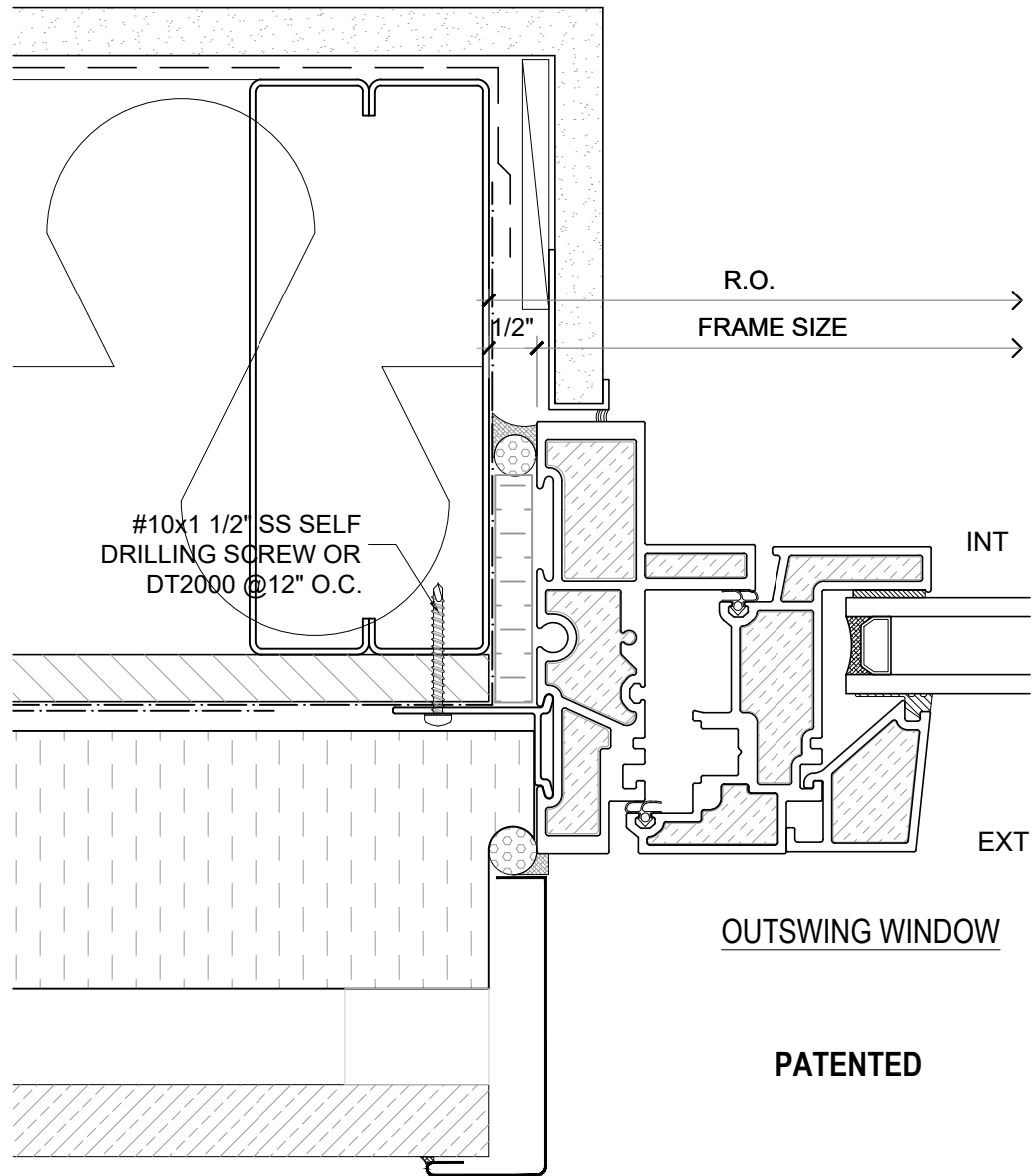
DRAWING NO.:  
**NF-1.03**

SCALE: 6" = 1'-0"

PATENTED

DATE: 26 AUGUST, 2020

DRAWN BY: CP



**NOTE:** THIS DRAFT DETAIL IS FOR GENERAL ARRANGEMENT PURPOSES ONLY, AND DOES NOT NECESSARILY REPRESENT A DETAIL THAT IS APPROPRIATE FOR A SPECIFIC PROJECT. PRODUCTS AND ACCESSORIES PROVIDED BY CASCADIA MUST BE CONFIRMED FOR SPECIFIC PROJECTS.

**NOTE:** NAIL FLANGE IS CONTINUOUS

**CASCADIA WINDOWS LTD.**  
#101-5350 275TH STREET  
LANGLEY, BC, CANADA V4W 0C1

DRAWING  
TITLE:

**UNIVERSAL SERIES © - WINDOW JAMB**  
**REVERSED NAIL FLANGE INSTALLATION (CW-NF1)**

DRAWING NO.:

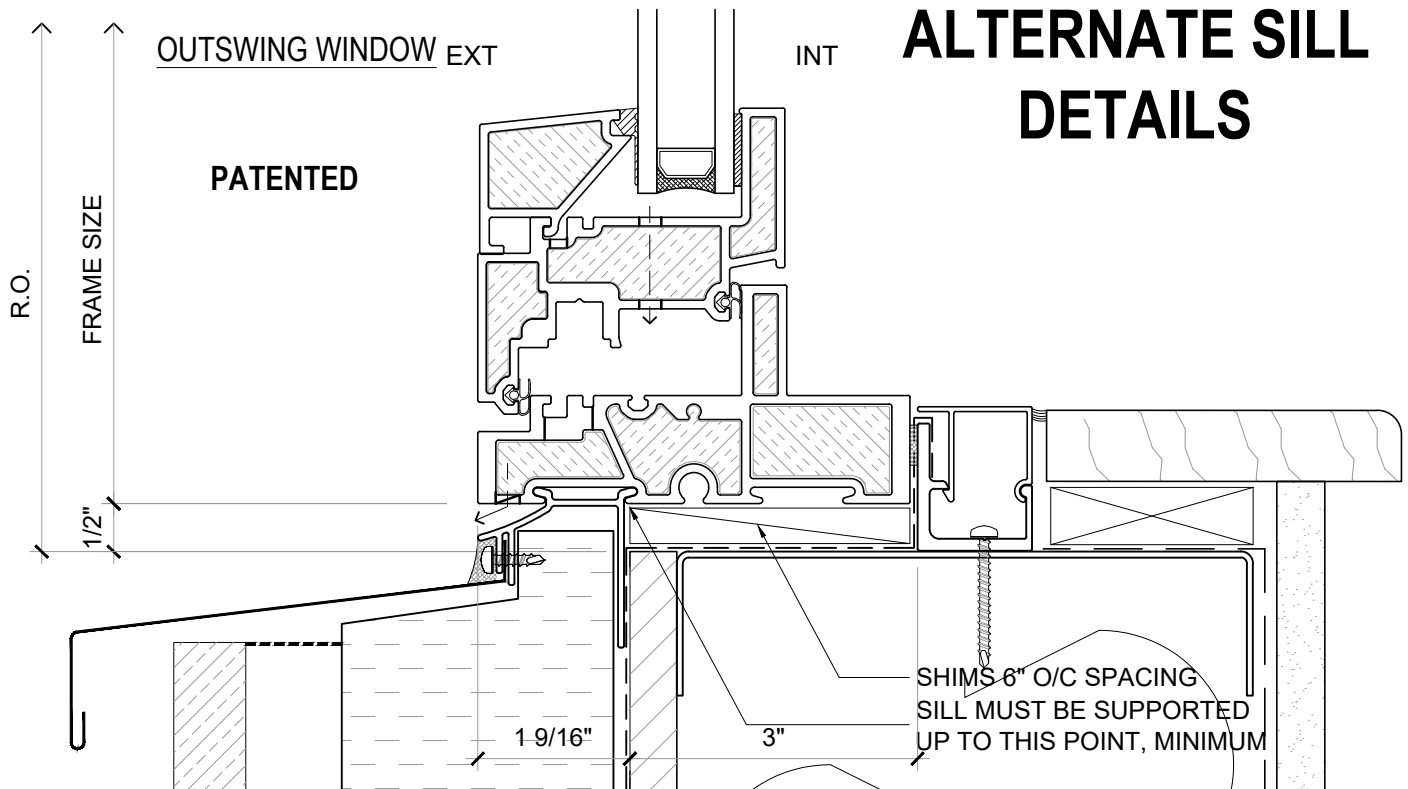
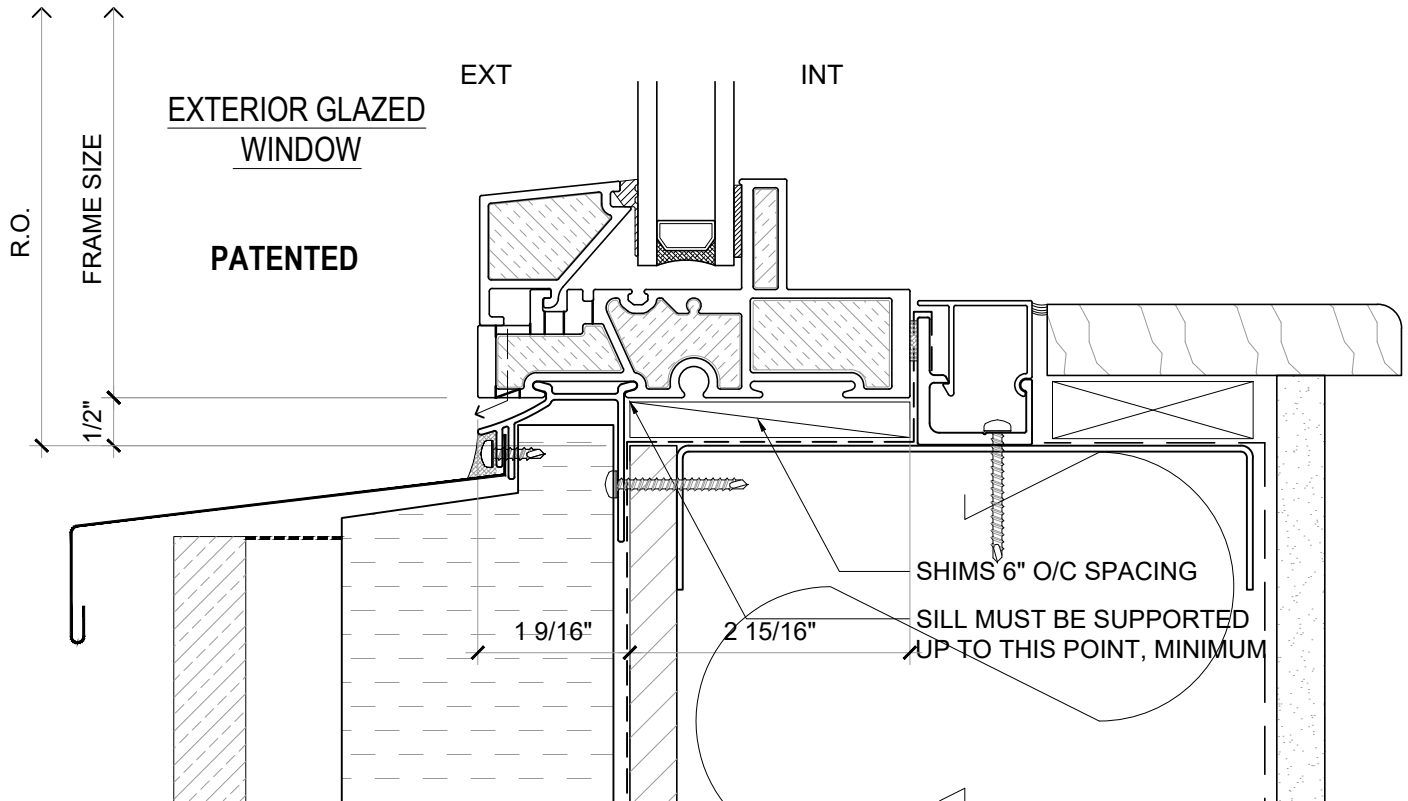
**NF-1.04**

SCALE: 6" = 1'-0"

PATENTED

DATE: 26 AUGUST, 2020

DRAWN BY: CP



## ALTERNATE SILL DETAILS

**NOTE:** THIS DRAFT DETAIL IS FOR GENERAL ARRANGEMENT PURPOSES ONLY, AND DOES NOT NECESSARILY REPRESENT A DETAIL THAT IS APPROPRIATE FOR A SPECIFIC PROJECT. PRODUCTS AND ACCESSORIES PROVIDED BY CASCADIA MUST BE CONFIRMED FOR SPECIFIC PROJECTS.

**NOTE:** NAIL FLANGE IS CONTINUOUS

**CASCADIA WINDOWS LTD.**  
#101-5350 275TH STREET  
LANGLEY, BC, CANADA V4W 0C1

DRAWING  
TITLE:

**UNIVERSAL SERIES ① - WINDOW SILLS**  
**REVERSED NAIL FLANGE INSTALLATION (CW-NF3)**

DRAWING NO.:

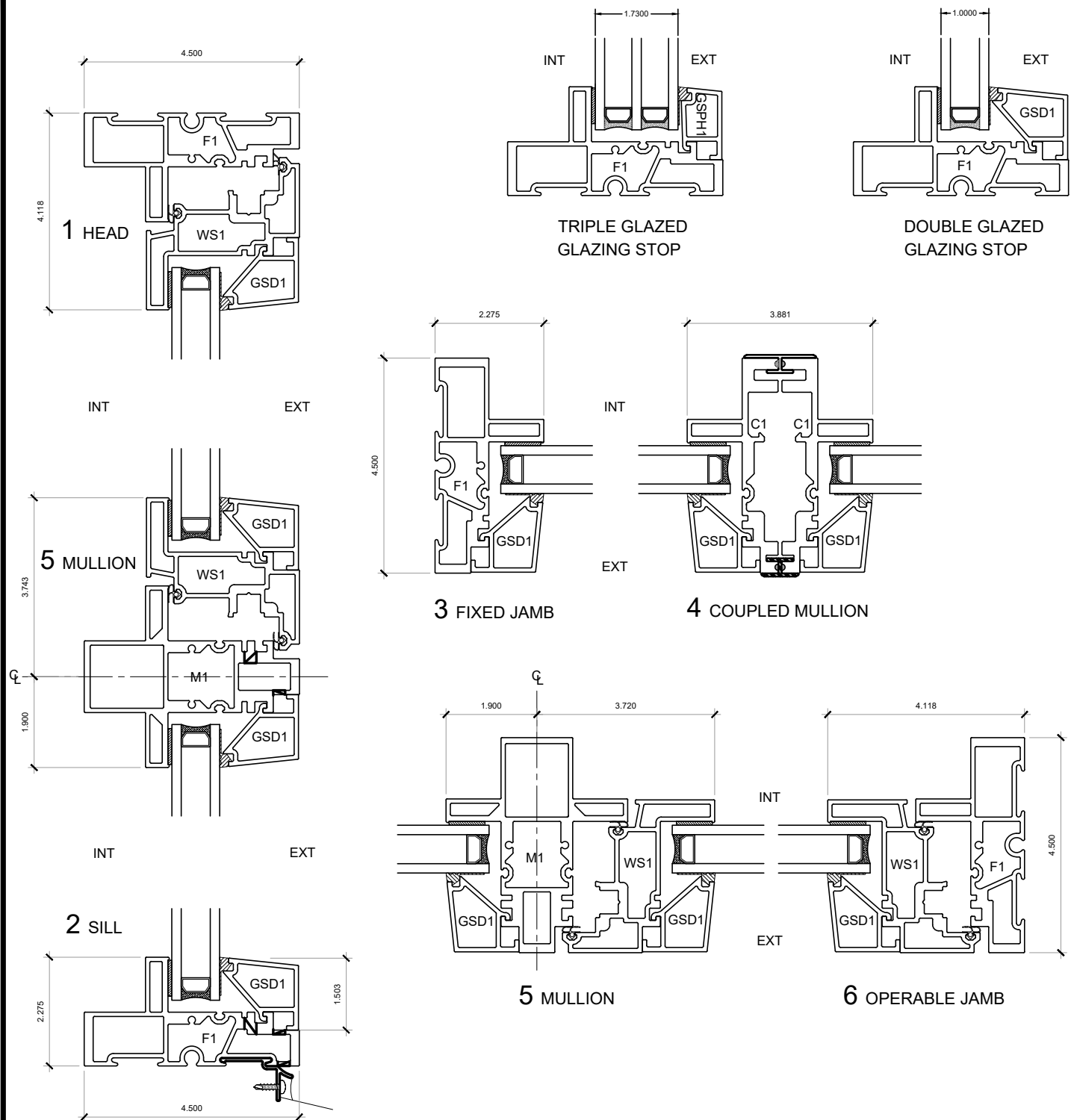
**NF-1.05**

SCALE: 6" = 1'-0"

PATENTED

DATE: 26 AUGUST, 2020

DRAWN BY: CP



**NOTE:** THIS DRAFT DETAIL IS FOR GENERAL ARRANGEMENT PURPOSES ONLY, AND DOES NOT NECESSARILY REPRESENT A DETAIL THAT IS APPROPRIATE FOR A SPECIFIC PROJECT. PRODUCTS AND ACCESSORIES PROVIDED BY CASCADIA MUST BE CONFIRMED FOR SPECIFIC PROJECTS.

**NOTE:** NAIL FLANGE IS CONTINUOUS

CASCADIA WINDOWS LTD.  
#101-5350 275TH STREET  
LANGLEY, BC, CANADA V4W 0C1

DRAWING TITLE: **UNIVERSAL SERIES ® - OUTSWING WINDOW**  
PRODUCT DRAWING

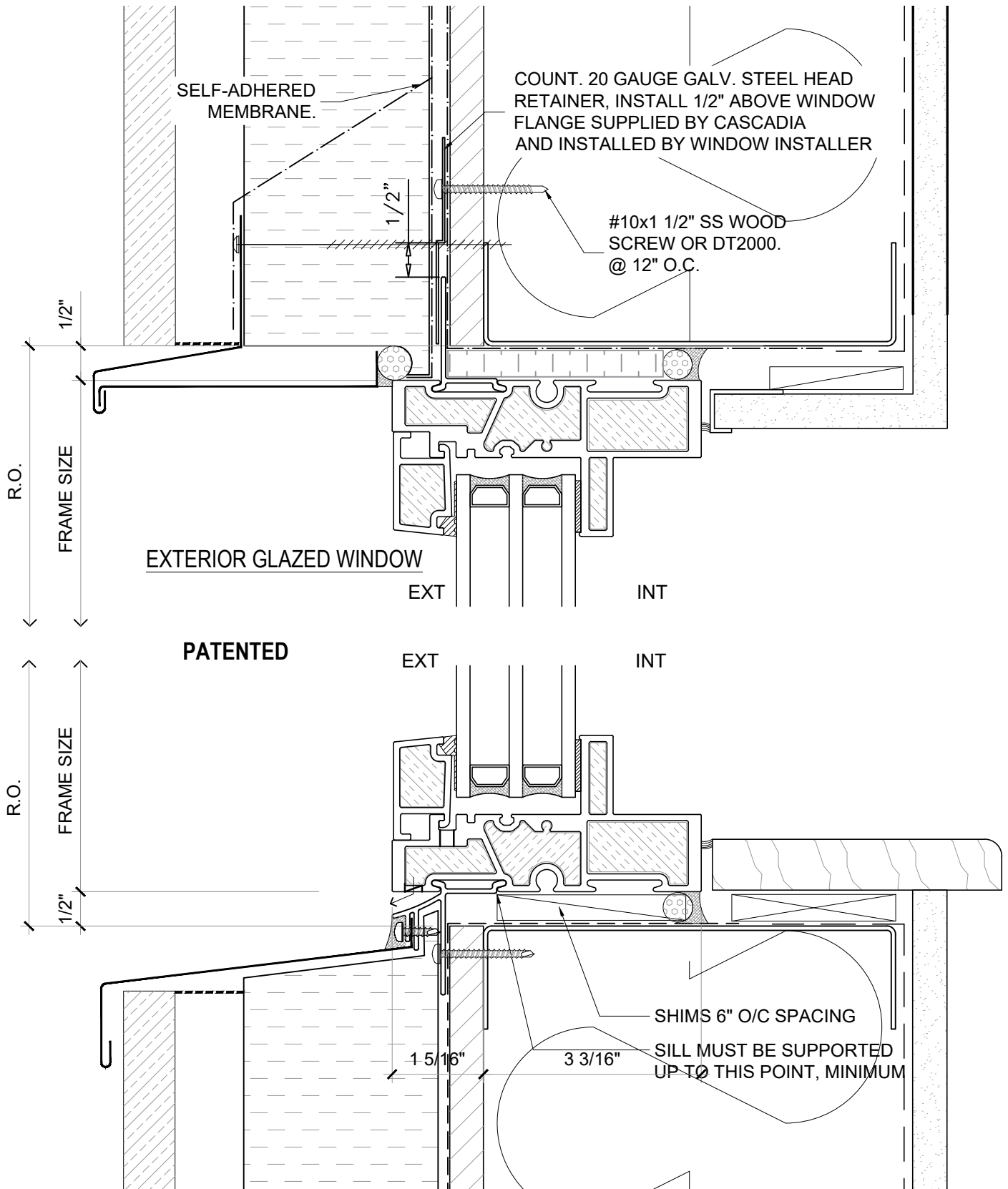
DRAWING NO.:  
**NF-1.06**

SCALE: 4" = 1'-0"

PATENTED

DATE: 26 AUGUST, 2020

DRAWN BY: CP



**NOTE:** THIS DRAFT DETAIL IS FOR GENERAL ARRANGEMENT PURPOSES ONLY, AND DOES NOT NECESSARILY REPRESENT A DETAIL THAT IS APPROPRIATE FOR A SPECIFIC PROJECT. PRODUCTS AND ACCESSORIES PROVIDED BY CASCADIA MUST BE CONFIRMED FOR SPECIFIC PROJECTS.

**NOTE:** NAIL FLANGE IS CONTINUOUS

**CASCADIA WINDOWS LTD.**  
#101-5350 275TH STREET  
LANGLEY, BC, CANADA V4W 0C1

DRAWING TITLE: **UNIVERSAL SERIES ® - WINDOW HEAD+SILL**  
**STANDARD NAIL FLANGE INSTALLATION (CW-NF2)**

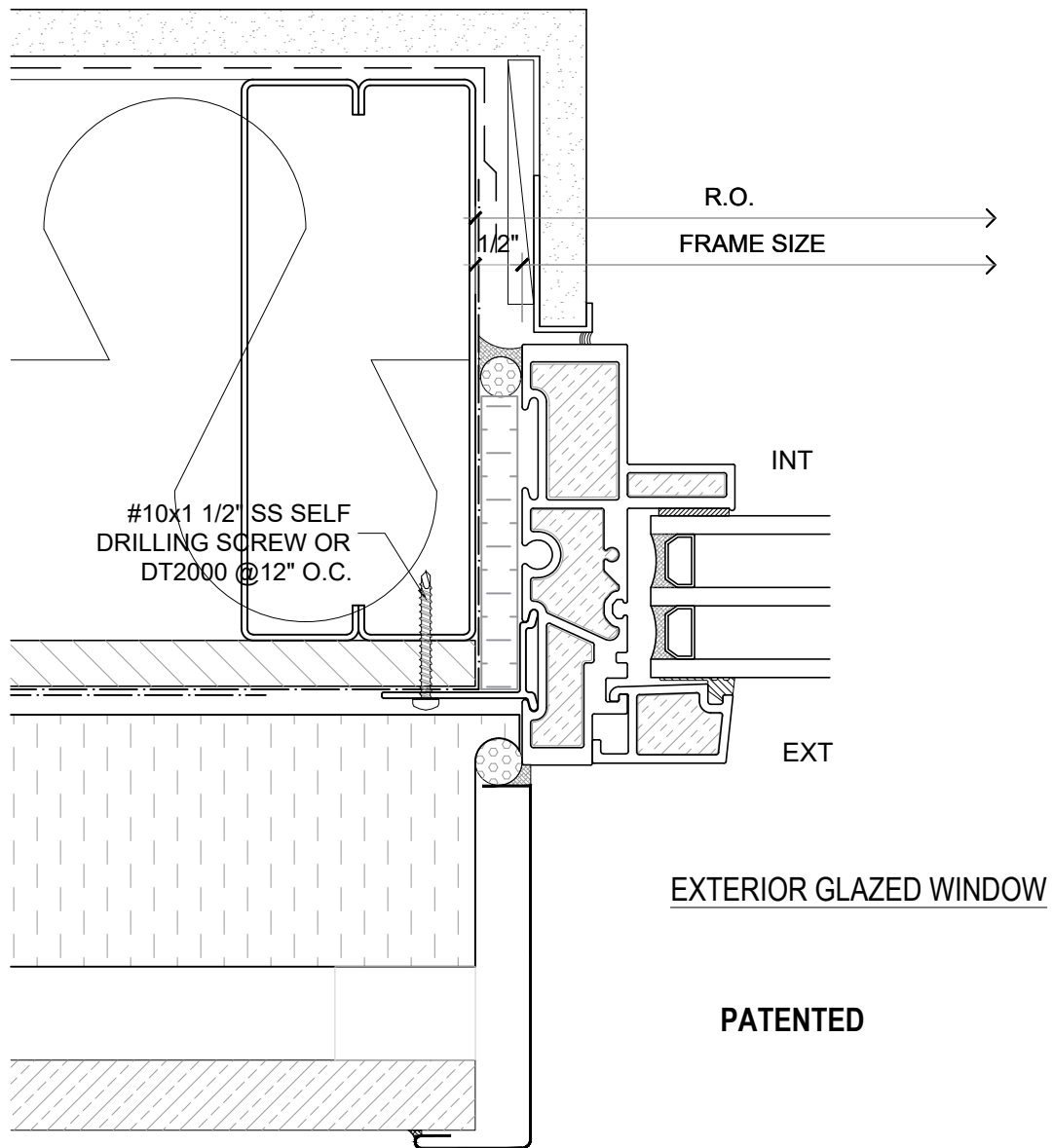
DRAWING NO.:  
**NF-1.01**

SCALE: 6" = 1'-0"

PATENTED

DATE: 27 AUGUST, 2020

DRAWN BY: CP



**NOTE:** THIS DRAFT DETAIL IS FOR GENERAL ARRANGEMENT PURPOSES ONLY, AND DOES NOT NECESSARILY REPRESENT A DETAIL THAT IS APPROPRIATE FOR A SPECIFIC PROJECT. PRODUCTS AND ACCESSORIES PROVIDED BY CASCADIA MUST BE CONFIRMED FOR SPECIFIC PROJECTS.

**NOTE:** NAIL FLANGE IS CONTINUOUS

**CASCADIA WINDOWS LTD.**  
#101-5350 275TH STREET  
LANGLEY, BC, CANADA V4W 0C1

DRAWING  
TITLE:

**UNIVERSAL SERIES ① - WINDOW JAMB**  
**STANDARD NAIL FLANGE INSTALLATION (CW-NF1)**

DRAWING NO.:

**NF-1.02**

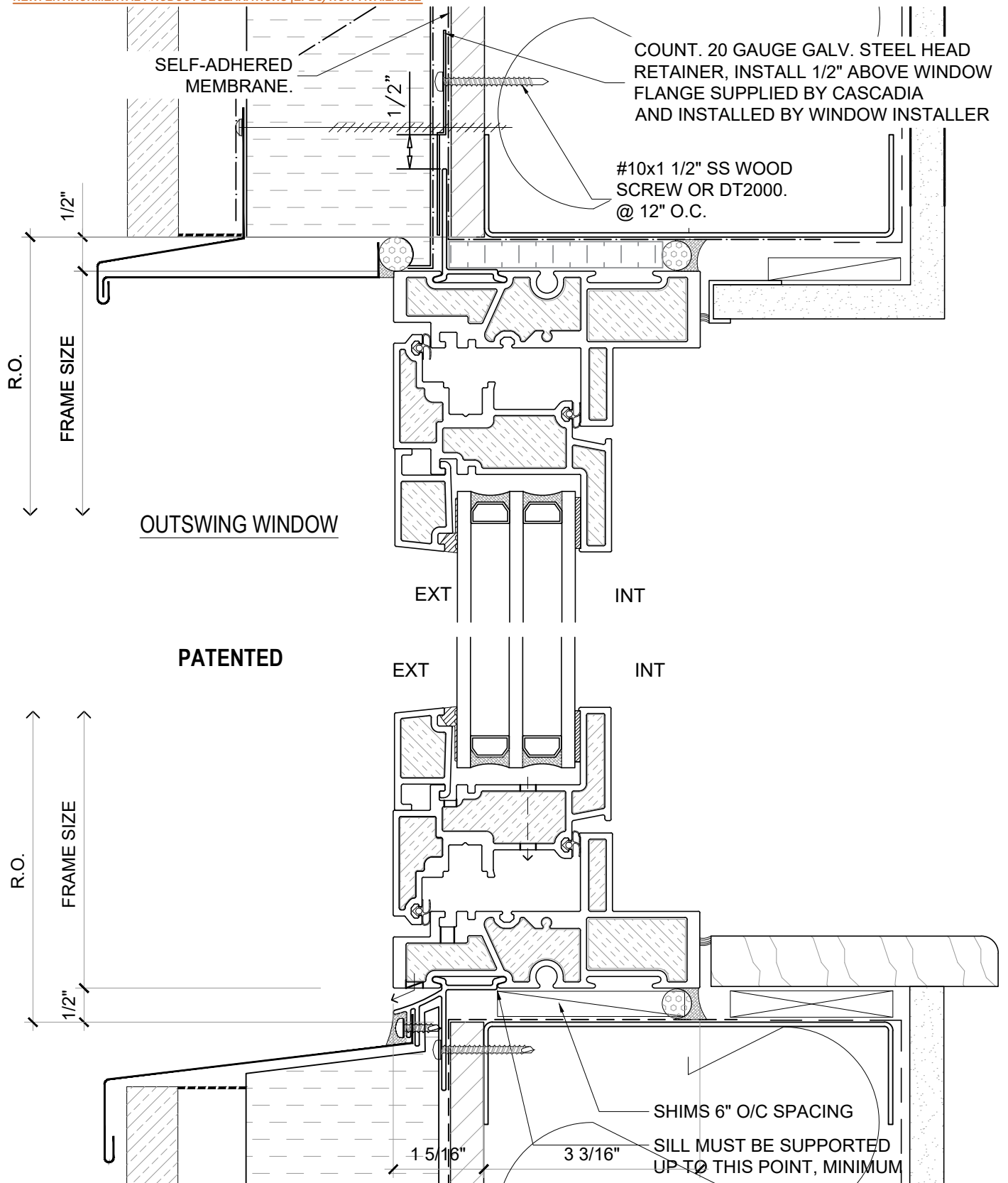
SCALE: 6" = 1'-0"

PATENTED

DATE: 27 AUGUST, 2020

DRAWN BY: CP

NEW: ENVIRONMENTAL PRODUCT DECLARATIONS (EPDs) NOW AVAILABLE



**NOTE:** THIS DRAFT DETAIL IS FOR GENERAL ARRANGEMENT PURPOSES ONLY, AND DOES NOT NECESSARILY REPRESENT A DETAIL THAT IS APPROPRIATE FOR A SPECIFIC PROJECT. PRODUCTS AND ACCESSORIES PROVIDED BY CASCADIA MUST BE CONFIRMED FOR SPECIFIC PROJECTS.

**NOTE:** NAIL FLANGE IS CONTINUOUS

**CASCADIA WINDOWS LTD.**  
#101-5350 275TH STREET  
LANGLEY, BC, CANADA V4W 0C1

**DRAWING TITLE:** **UNIVERSAL SERIES ® - WINDOW HEAD+SILL**  
**STANDARD NAIL FLANGE INSTALLATION (CW-NF2)**

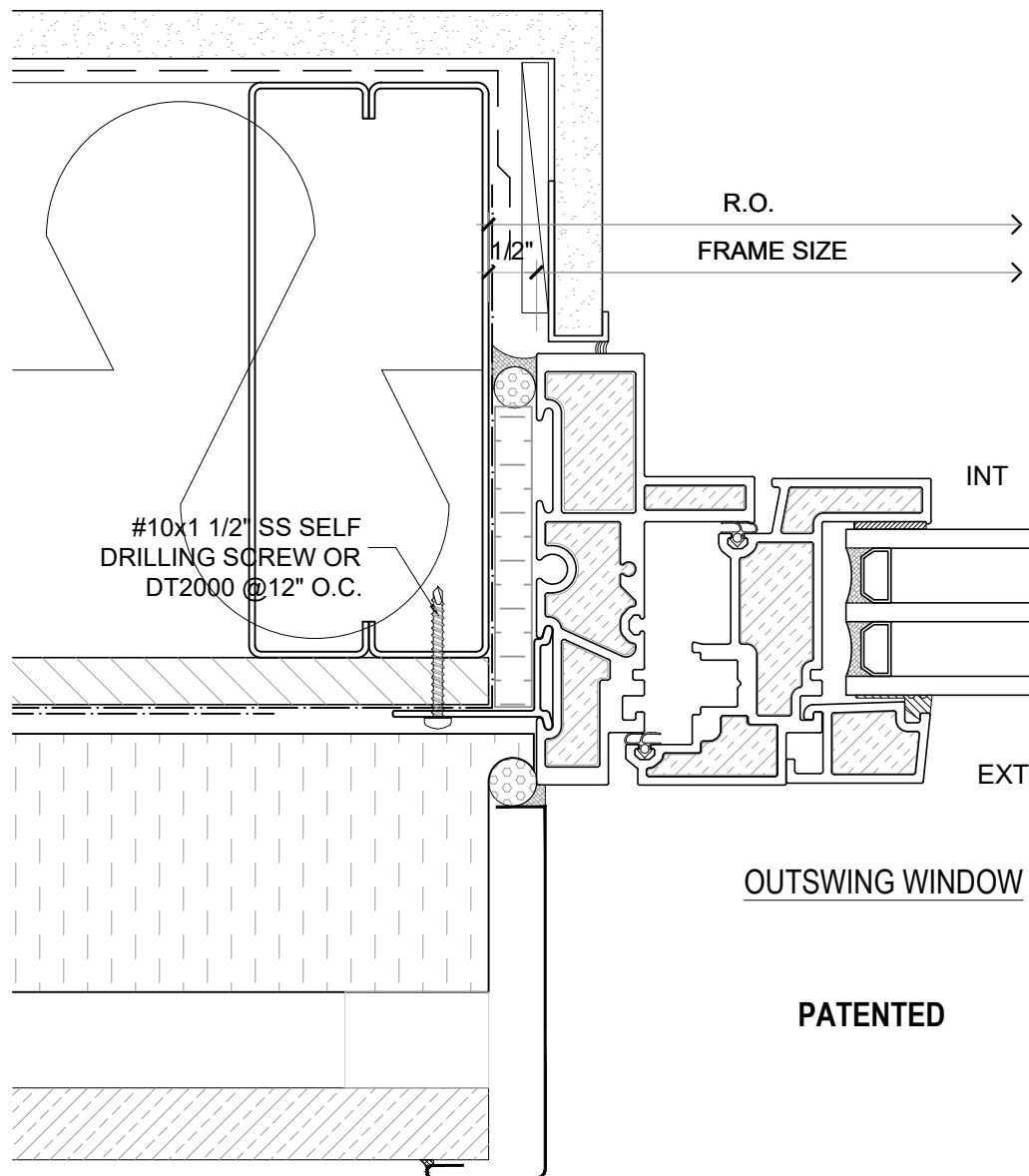
**DRAWING NO.:**  
**NF-1.03**

**SCALE:** 6" = 1'-0"

**PATENTED**

**DATE:** 27 AUGUST, 2020

**DRAWN BY:** CP



**NOTE:** THIS DRAFT DETAIL IS FOR GENERAL ARRANGEMENT PURPOSES ONLY, AND DOES NOT NECESSARILY REPRESENT A DETAIL THAT IS APPROPRIATE FOR A SPECIFIC PROJECT. PRODUCTS AND ACCESSORIES PROVIDED BY CASCADIA MUST BE CONFIRMED FOR SPECIFIC PROJECTS.

**NOTE:** NAIL FLANGE IS CONTINUOUS

CASCADIA WINDOWS LTD.  
#101-5350 275TH STREET  
LANGLEY, BC, CANADA V4W 0C1

DRAWING  
TITLE:

UNIVERSAL SERIES <sup>®</sup> - WINDOW JAMB  
STANDARD NAIL FLANGE INSTALLATION (CW-NF1)

DRAWING NO.:

NF-1.04

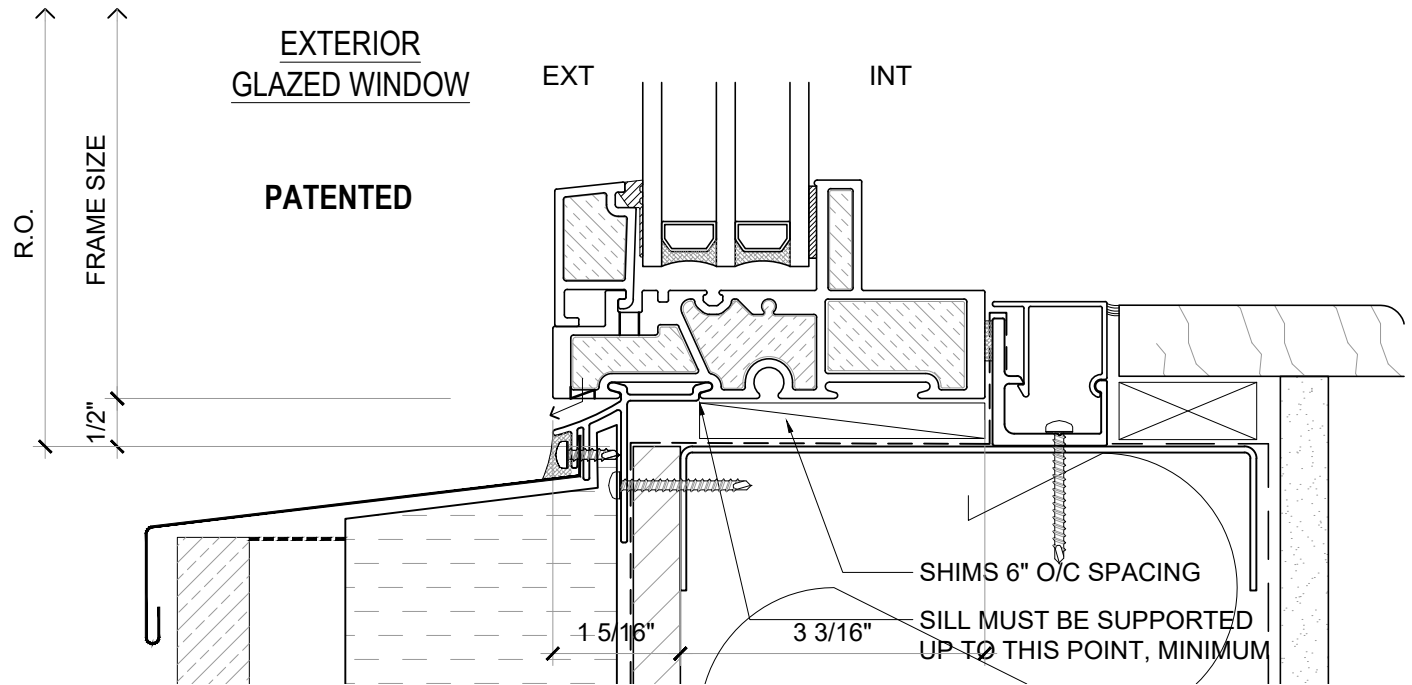
SCALE: 6" = 1'-0"

PATENTED

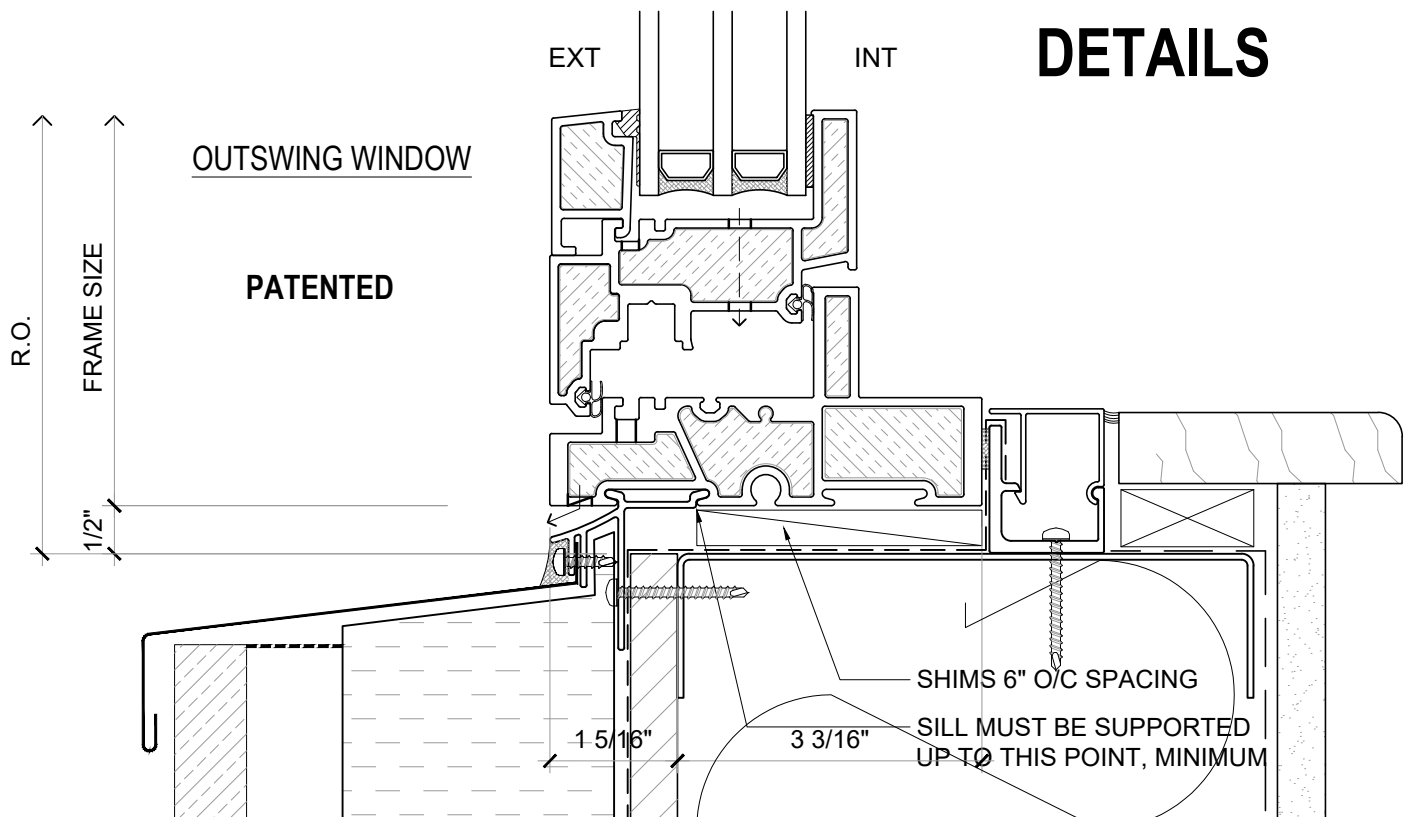
DATE: 27 AUGUST, 2020

DRAWN BY: CP





## ALTERNATE SILL DETAILS



**NOTE:** THIS DRAFT DETAIL IS FOR GENERAL ARRANGEMENT PURPOSES ONLY, AND DOES NOT NECESSARILY REPRESENT A DETAIL THAT IS APPROPRIATE FOR A SPECIFIC PROJECT. PRODUCTS AND ACCESSORIES PROVIDED BY CASCADIA MUST BE CONFIRMED FOR SPECIFIC PROJECTS.

**NOTE:** NAIL FLANGE IS CONTINUOUS

CASCADIA WINDOWS LTD.  
#101-5350 275TH STREET  
LANGLEY, BC, CANADA V4W 0C1

DRAWING  
TITLE:

UNIVERSAL SERIES <sup>®</sup> - WINDOW SILLS  
STANDARD NAIL FLANGE INSTALLATION (CW-NF2)

DRAWING NO.:

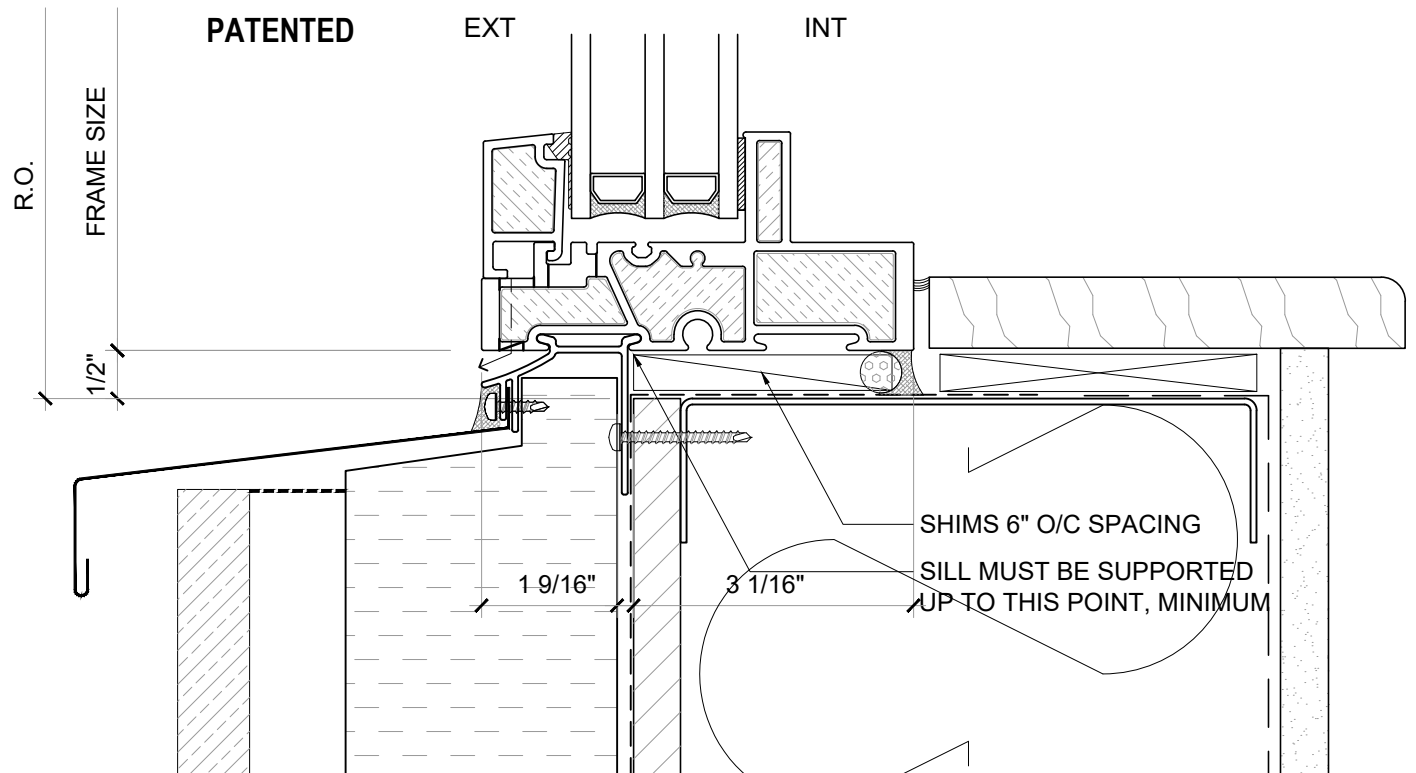
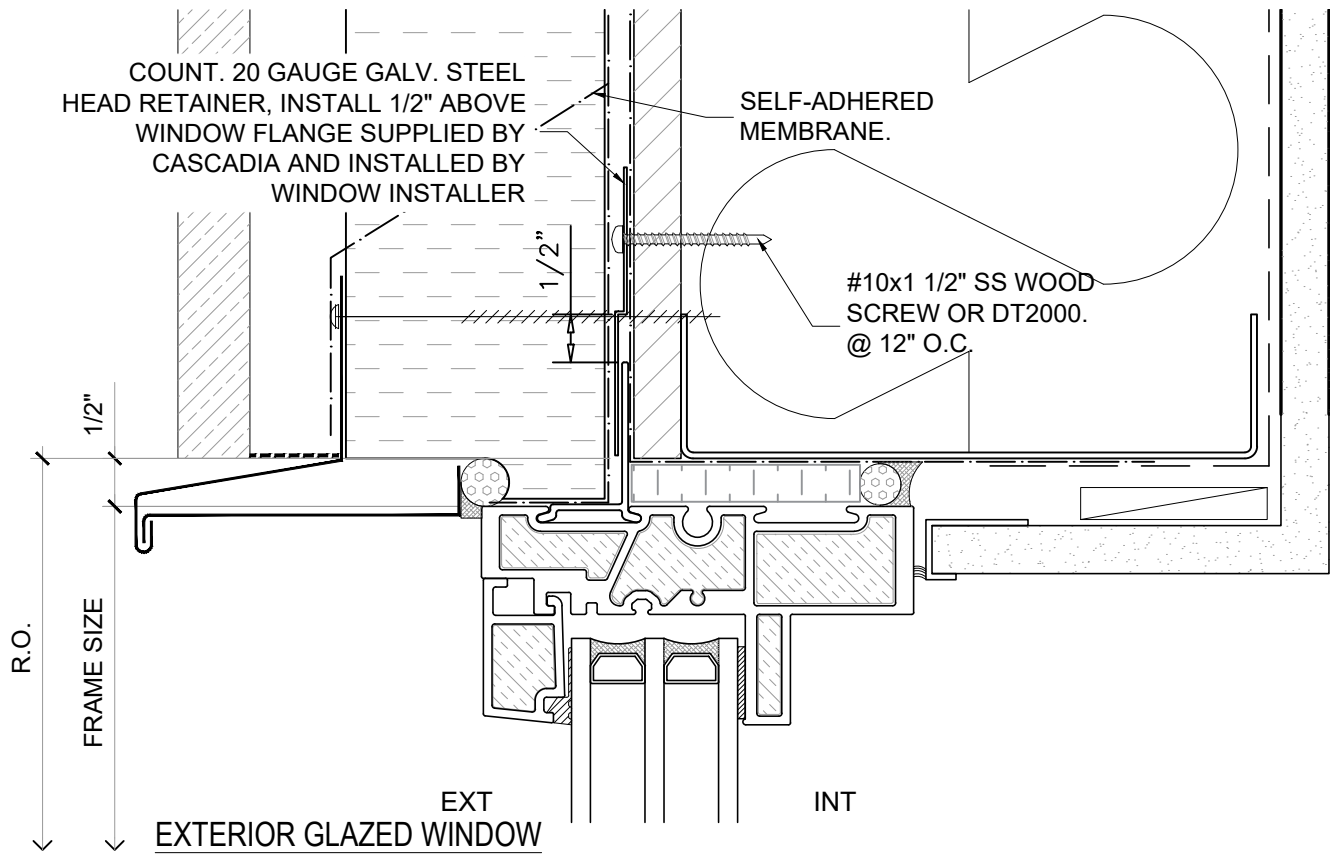
NF-1.05

SCALE: 6" = 1'-0"

PATENTED

DATE: 27 AUGUST, 2020

DRAWN BY: CP



**NOTE:** THIS DRAFT DETAIL IS FOR GENERAL ARRANGEMENT PURPOSES ONLY, AND DOES NOT NECESSARILY REPRESENT A DETAIL THAT IS APPROPRIATE FOR A SPECIFIC PROJECT. PRODUCTS AND ACCESSORIES PROVIDED BY CASCADIA MUST BE CONFIRMED FOR SPECIFIC PROJECTS.

**NOTE:** NAIL FLANGE IS CONTINUOUS

CASCADIA WINDOWS LTD.  
#101-5350 275TH STREET  
LANGLEY, BC, CANADA V4W 0C1

DRAWING  
TITLE:

UNIVERSAL SERIES **®** - WINDOW HEAD+SIL  
REVERSED NAIL FLANGE INSTALLATION (CW-NF3)

DRAWING NO.:

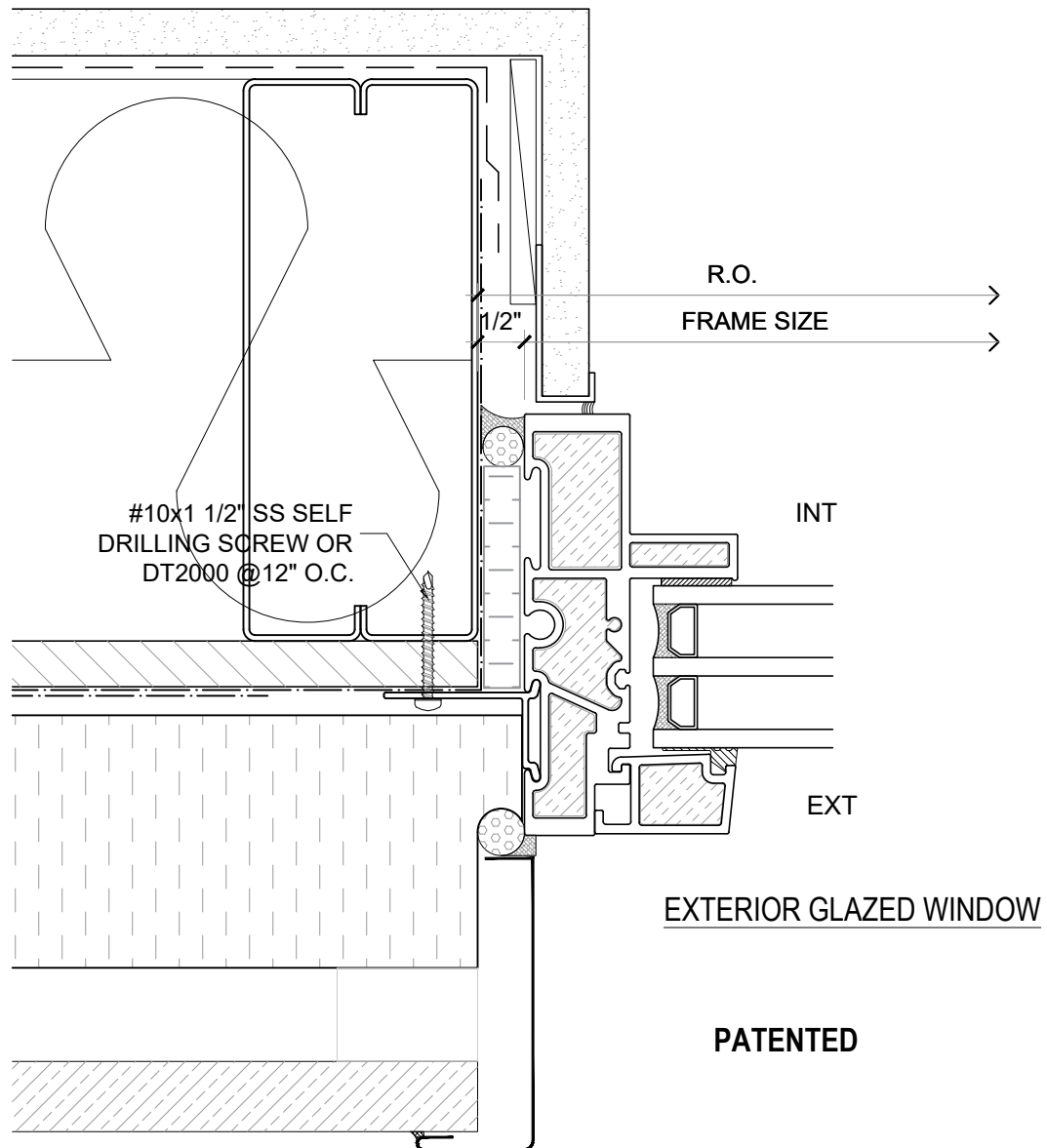
NF-1.01

SCALE: 6" = 1'-0"

PATENTED

DATE: 26 AUGUST, 2020

DRAWN BY: CP



**NOTE:** THIS DRAFT DETAIL IS FOR GENERAL ARRANGEMENT PURPOSES ONLY, AND DOES NOT NECESSARILY REPRESENT A DETAIL THAT IS APPROPRIATE FOR A SPECIFIC PROJECT. PRODUCTS AND ACCESSORIES PROVIDED BY CASCADIA MUST BE CONFIRMED FOR SPECIFIC PROJECTS.

**NOTE:** NAIL FLANGE IS CONTINUOUS

**CASCADIA WINDOWS LTD.**  
#101-5350 275TH STREET  
LANGLEY, BC, CANADA V4W 0C1

DRAWING  
TITLE:

**UNIVERSAL SERIES ① - WINDOW JAMB**  
**REVERSED NAIL FLANGE INSTALLATION (CW-NF1)**

DRAWING NO.:

**NF-1.02**

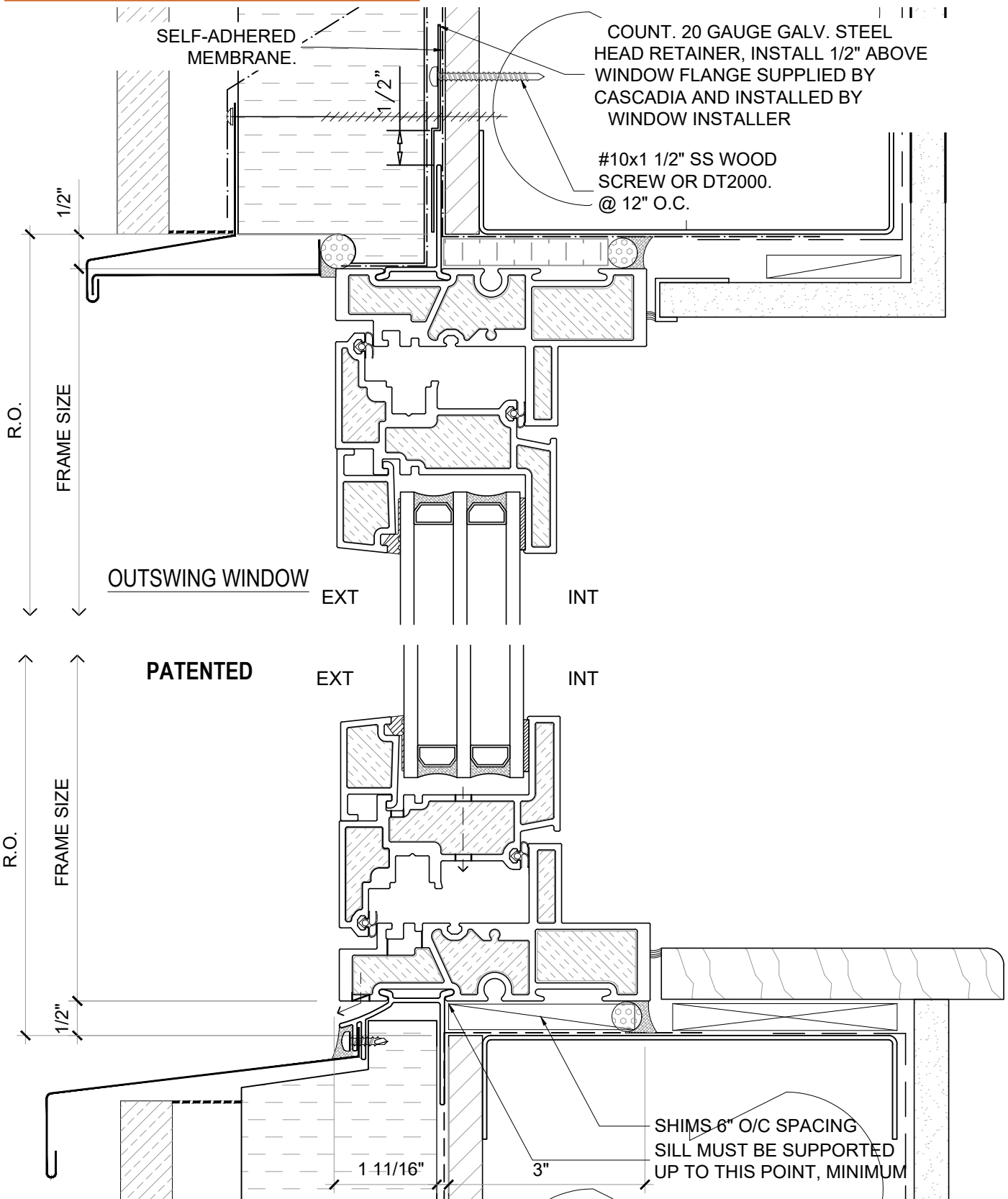
SCALE: 6" = 1'-0"

PATENTED

DATE: 26 AUGUST, 2020

DRAWN BY: CP

NEW: ENVIRONMENTAL PRODUCT DECLARATIONS (EPDs) NOW AVAILABLE



**NOTE:** THIS DRAFT DETAIL IS FOR GENERAL ARRANGEMENT PURPOSES ONLY, AND DOES NOT NECESSARILY REPRESENT A DETAIL THAT IS APPROPRIATE FOR A SPECIFIC PROJECT. PRODUCTS AND ACCESSORIES PROVIDED BY CASCADIA MUST BE CONFIRMED FOR SPECIFIC PROJECTS.

**NOTE:** NAIL FLANGE IS CONTINUOUS

CASCADIA WINDOWS LTD.  
#101-5350 275TH STREET  
LANGLEY, BC, CANADA V4W 0C1

DRAWING TITLE: **UNIVERSAL SERIES ® - WINDOW HEAD+SILL**  
**REVERSED NAIL FLANGE INSTALLATION ( CW-NF3)**

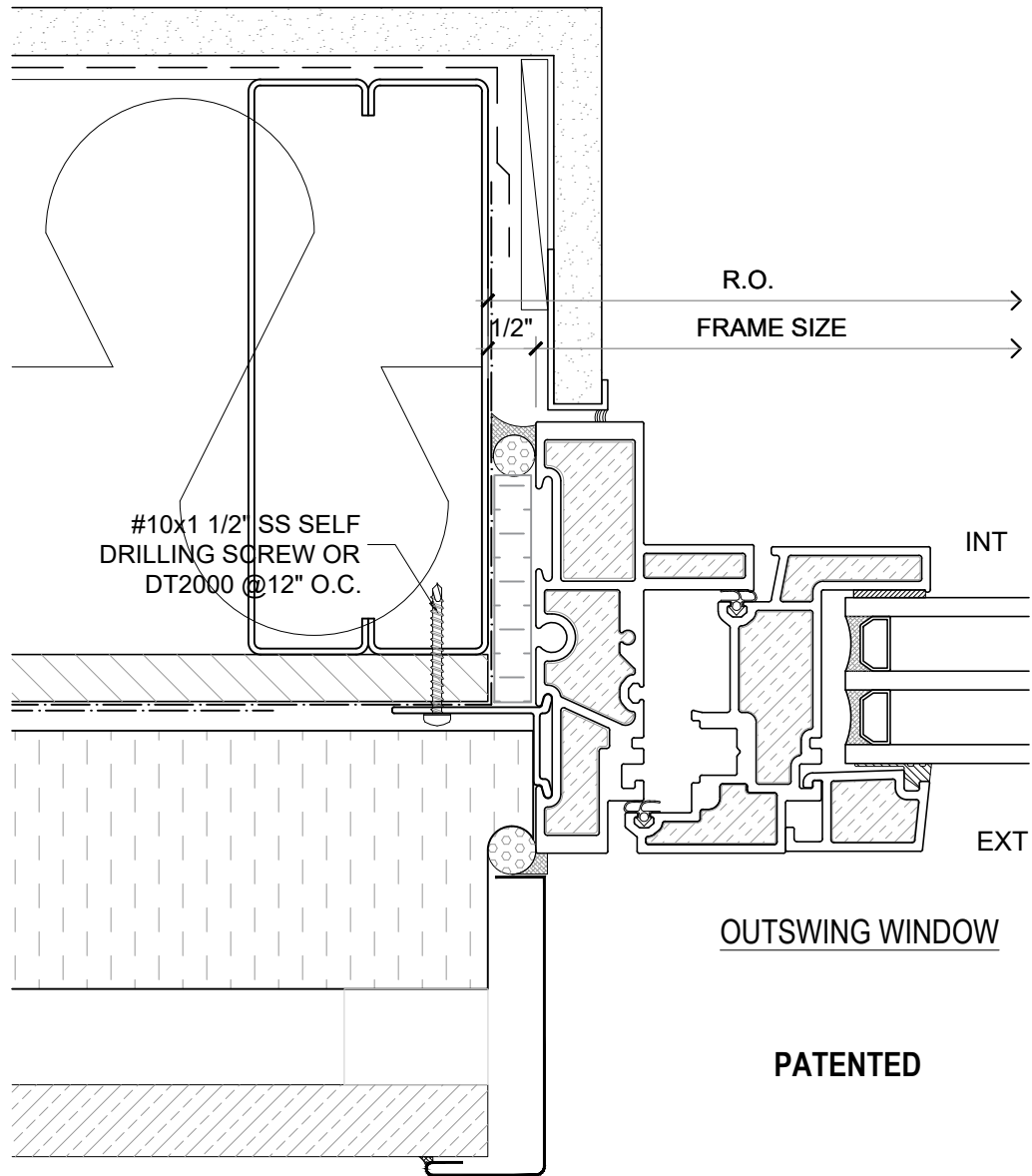
DRAWING NO.:  
**NF-1.03**

SCALE: 6" = 1'-0"

PATENTED

DATE: 26 AUGUST, 2020

DRAWN BY: CP



**NOTE:** THIS DRAFT DETAIL IS FOR GENERAL ARRANGEMENT PURPOSES ONLY, AND DOES NOT NECESSARILY REPRESENT A DETAIL THAT IS APPROPRIATE FOR A SPECIFIC PROJECT. PRODUCTS AND ACCESSORIES PROVIDED BY CASCADIA MUST BE CONFIRMED FOR SPECIFIC PROJECTS.

**NOTE:** NAIL FLANGE IS CONTINUOUS

**CASCADIA WINDOWS LTD.**  
#101-5350 275TH STREET  
LANGLEY, BC, CANADA V4W 0C1

DRAWING  
TITLE:

**UNIVERSAL SERIES ① - WINDOW JAMB**  
**REVERSED NAIL FLANGE INSTALLATION (CW-NF1)**

DRAWING NO.:

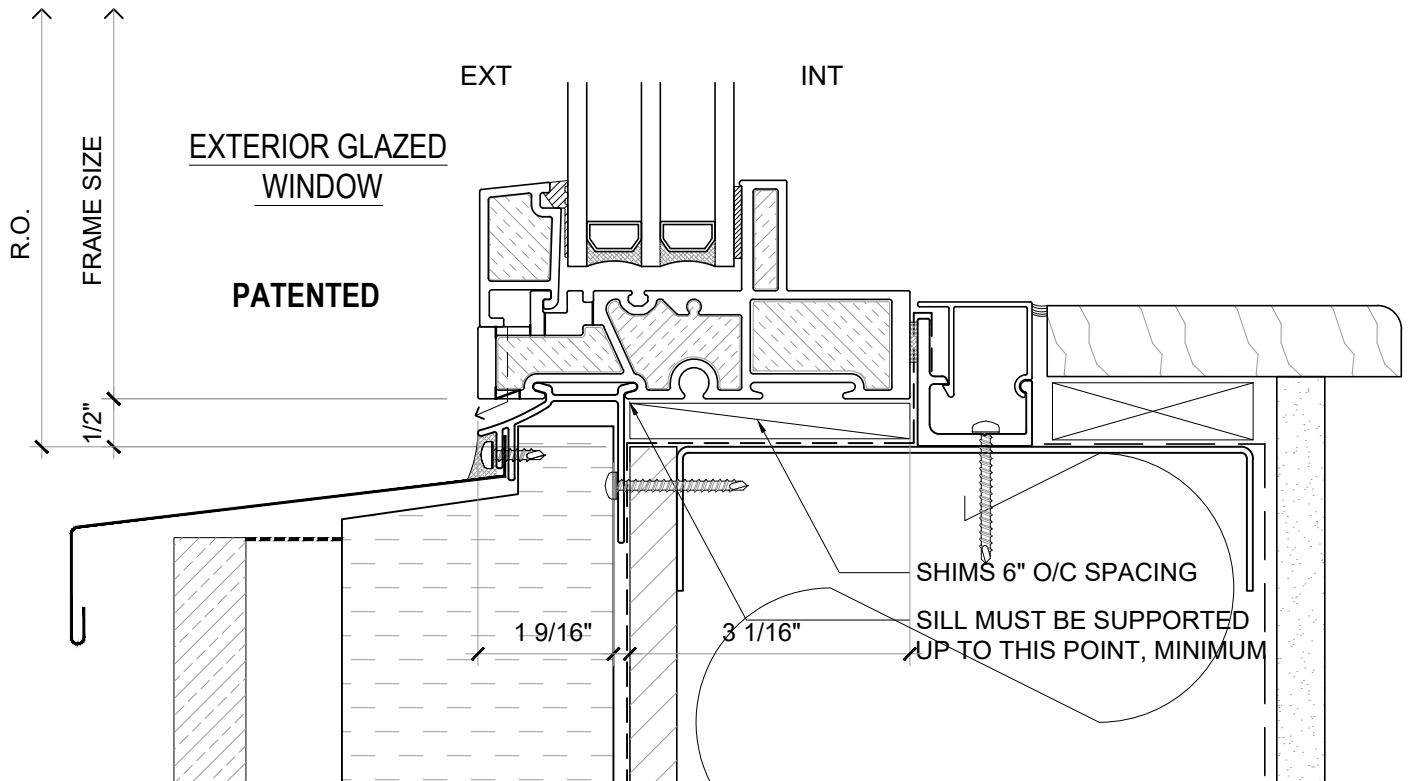
**NF-1.04**

SCALE: 6" = 1'-0"

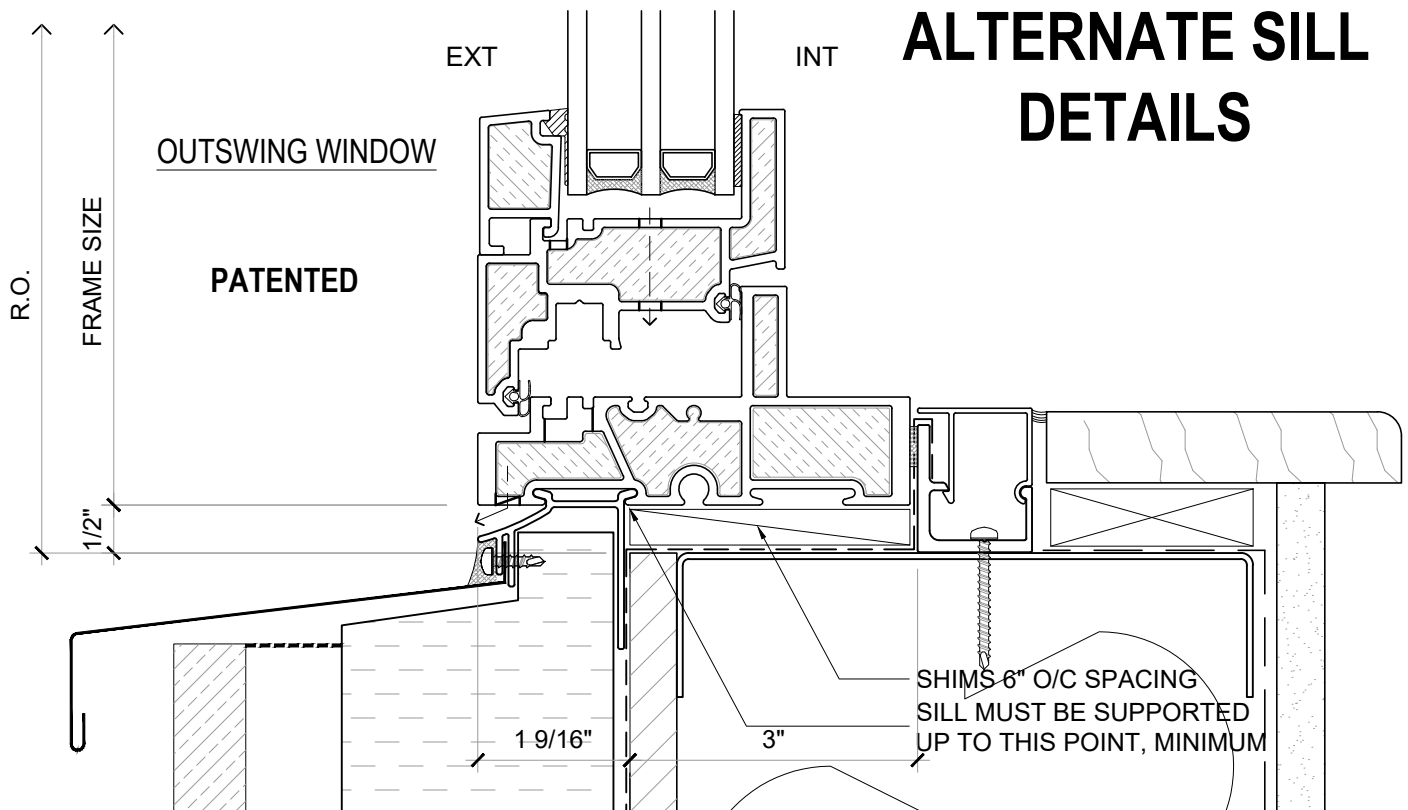
PATENTED

DATE: 26 AUGUST, 2020

DRAWN BY: CP



## ALTERNATE SILL DETAILS



**NOTE:** THIS DRAFT DETAIL IS FOR GENERAL ARRANGEMENT PURPOSES ONLY, AND DOES NOT NECESSARILY REPRESENT A DETAIL THAT IS APPROPRIATE FOR A SPECIFIC PROJECT. PRODUCTS AND ACCESSORIES PROVIDED BY CASCADIA MUST BE CONFIRMED FOR SPECIFIC PROJECTS.

**NOTE:** NAIL FLANGE IS CONTINUOUS

CASCADIA WINDOWS LTD.  
#101-5350 275TH STREET  
LANGLEY, BC, CANADA V4W 0C1

DRAWING  
TITLE:

UNIVERSAL SERIES **®** - WINDOW SILLS  
REVERSED NAIL FLANGE INSTALLATION ( CW-NF3)

DRAWING NO.:

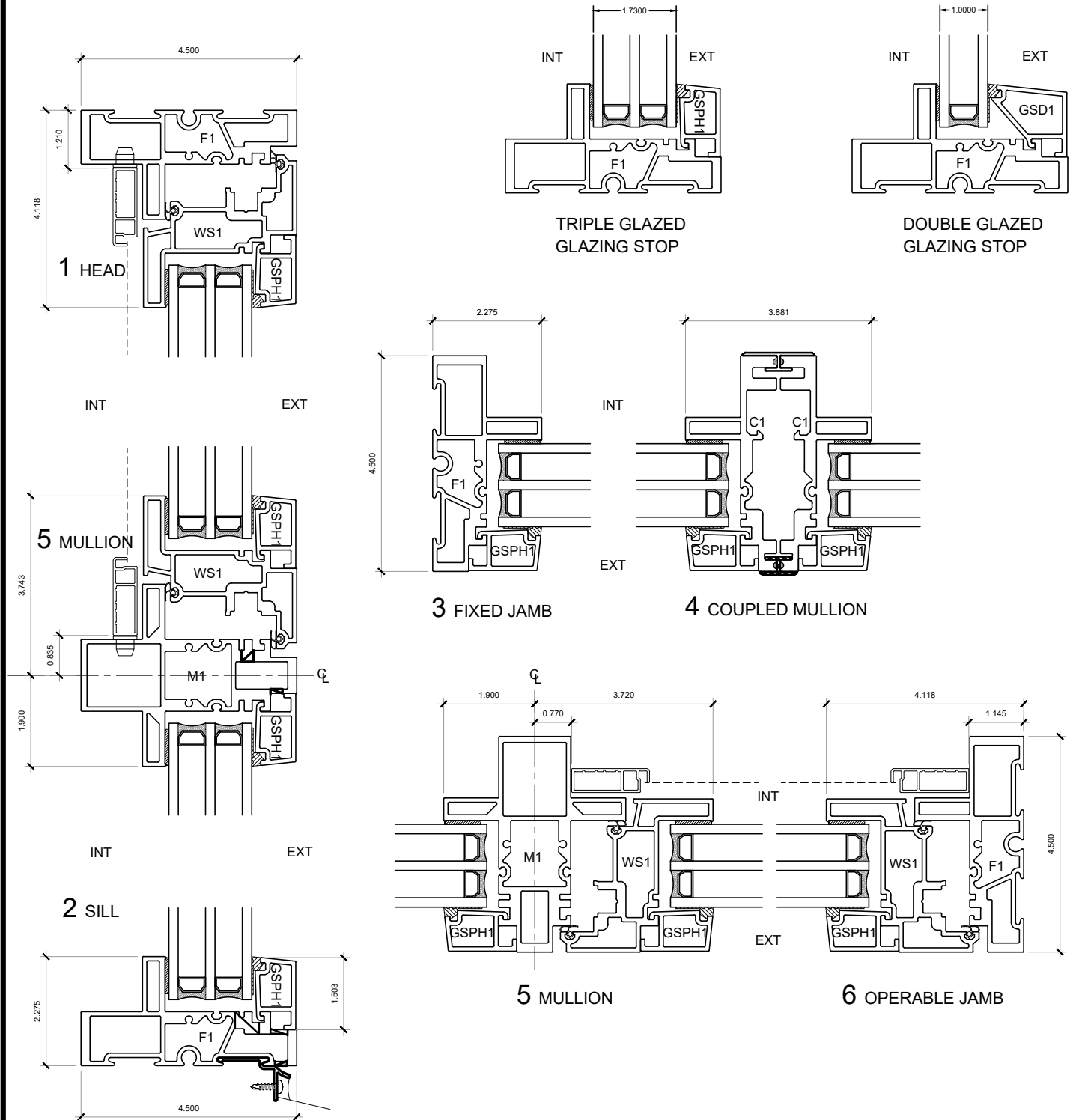
NF-1.05

SCALE: 6" = 1'-0"

PATENTED

DATE: 26 AUGUST, 2020

DRAWN BY: CP



**NOTE:** THIS DRAFT DETAIL IS FOR GENERAL ARRANGEMENT PURPOSES ONLY, AND DOES NOT NECESSARILY REPRESENT A DETAIL THAT IS APPROPRIATE FOR A SPECIFIC PROJECT. PRODUCTS AND ACCESSORIES PROVIDED BY CASCADIA MUST BE CONFIRMED FOR SPECIFIC PROJECTS.

**NOTE:** NAIL FLANGE IS CONTINUOUS

CASCADIA WINDOWS LTD.  
#101-5350 275TH STREET  
LANGLEY, BC, CANADA V4W 0C1

DRAWING TITLE: **UNIVERSAL SERIES © - OUTSWING WINDOWS**  
PRODUCT DRAWINGS

DRAWING NO.:  
**NF-1.06**

SCALE: 4" = 1'-0"

PATENTED

DATE: 26 AUGUST, 2020

DRAWN BY: CP