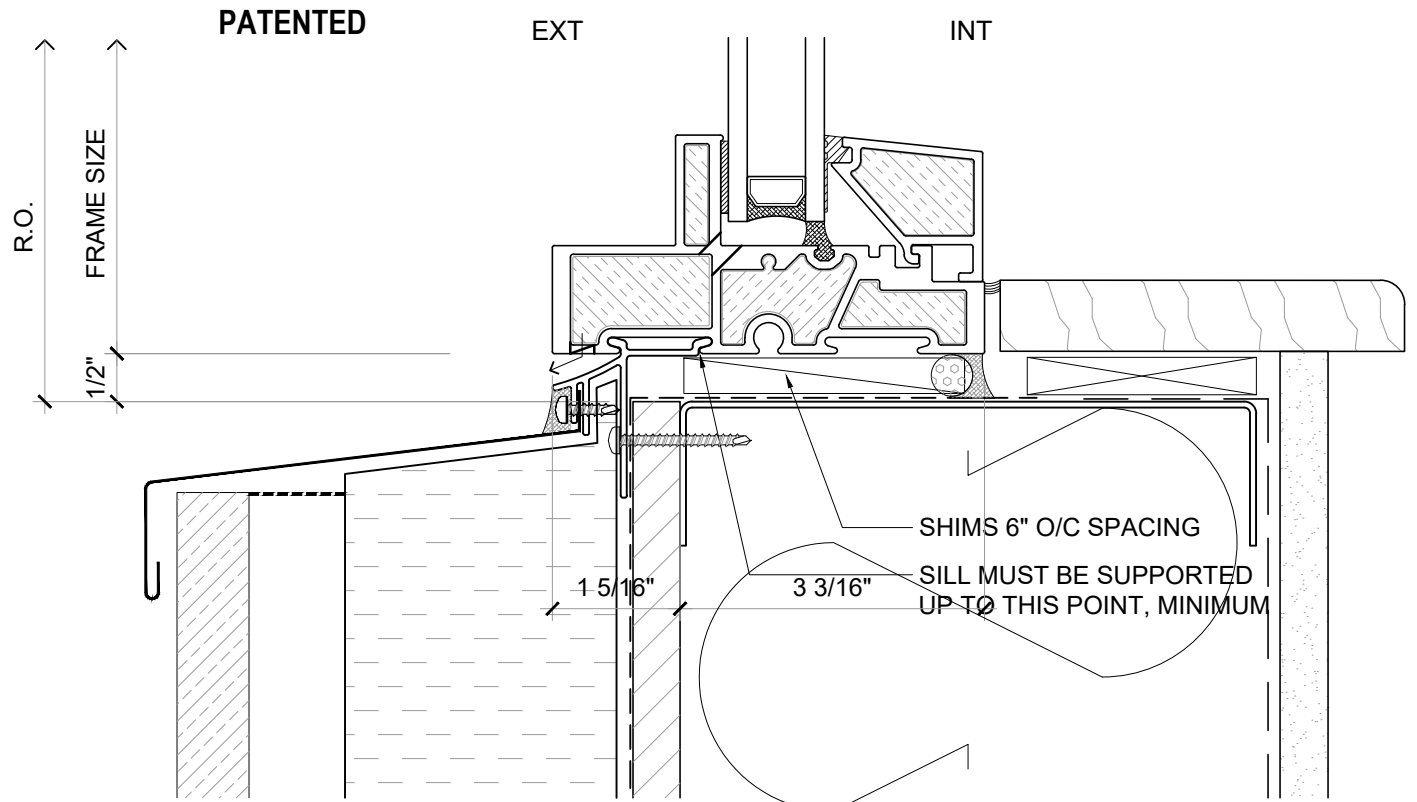
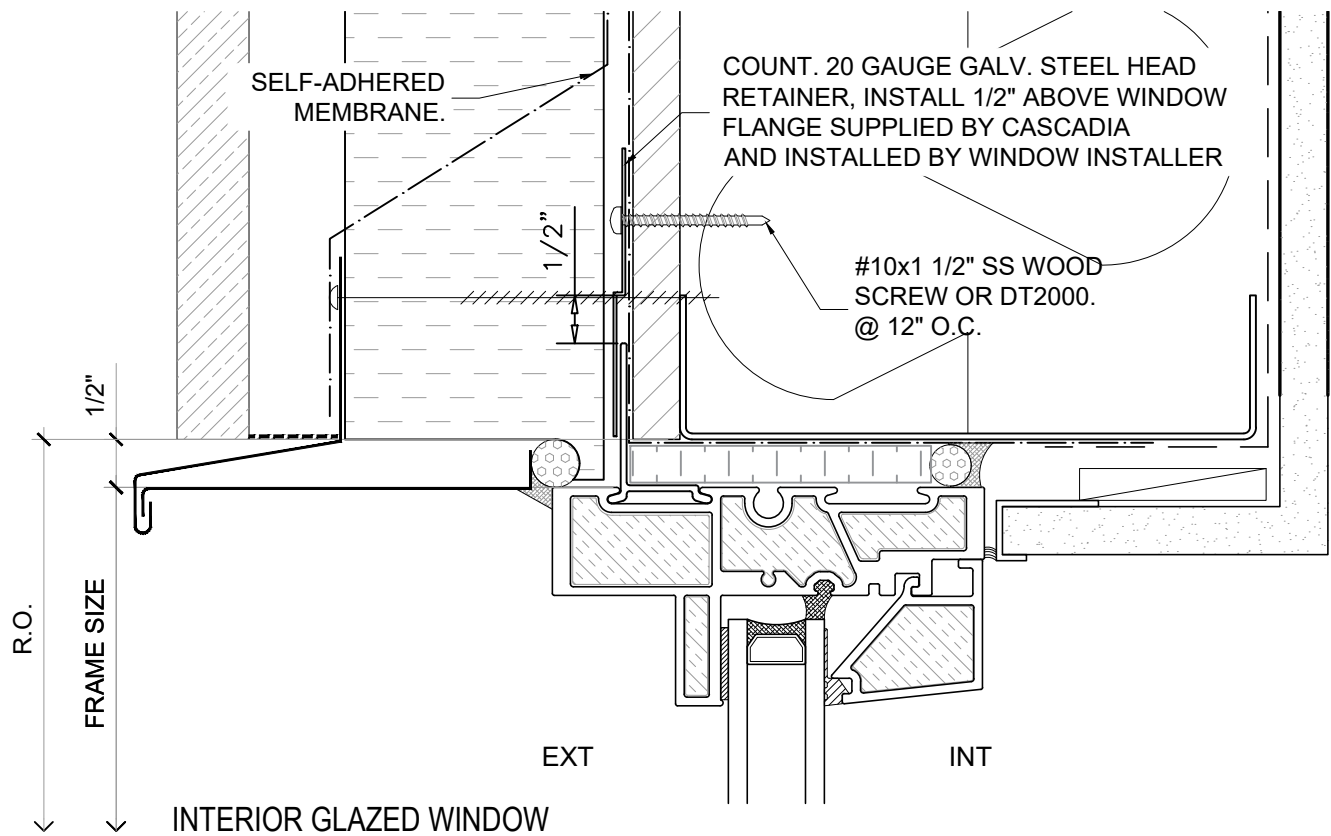


NEW: ENVIRONMENTAL PRODUCT DECLARATIONS (EPDs) NOW AVAILABLE



NOTE: THIS DRAFT DETAIL IS FOR GENERAL ARRANGEMENT PURPOSES ONLY, AND DOES NOT NECESSARILY REPRESENT A DETAIL THAT IS APPROPRIATE FOR A SPECIFIC PROJECT. PRODUCTS AND ACCESSORIES PROVIDED BY CASCADIA MUST BE CONFIRMED FOR SPECIFIC PROJECTS.

NOTE: NAIL FLANGE IS CONTINUOUS

CASCADIA WINDOWS LTD.
#101-5350 275TH STREET
LANGLEY, BC, CANADA V4W 0C1

DRAWING TITLE: **UNIVERSAL SERIES ® - WINDOW HEAD+SILL**
STANDARD NAIL FLANGE INSTALLATION (CW-NF1)

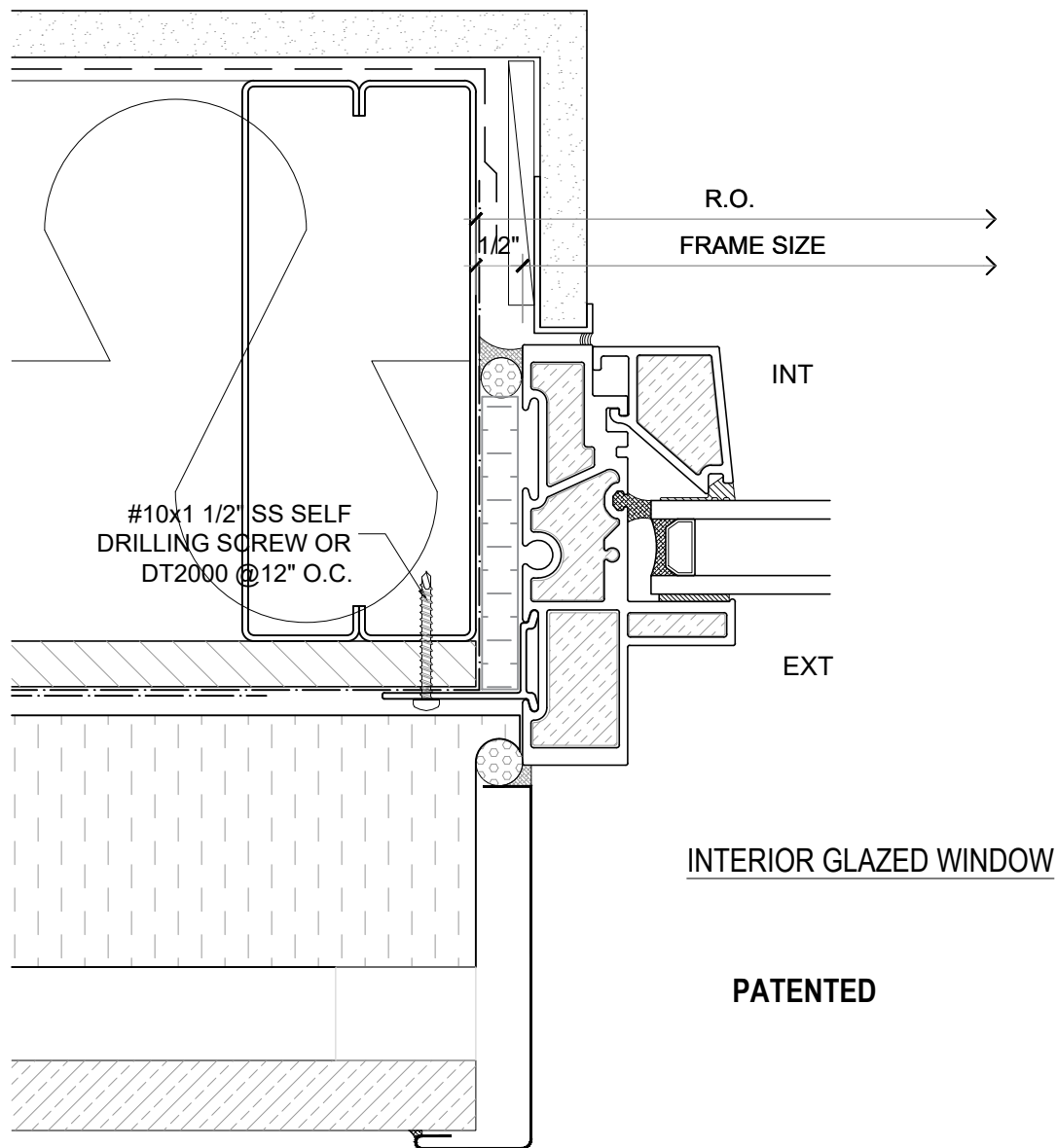
DRAWING NO.:
NF-1.01

SCALE: 6" = 1'-0"

PATENTED

DATE: 26 AUGUST, 2020

DRAWN BY: CP



NOTE: THIS DRAFT DETAIL IS FOR GENERAL ARRANGEMENT PURPOSES ONLY, AND DOES NOT NECESSARILY REPRESENT A DETAIL THAT IS APPROPRIATE FOR A SPECIFIC PROJECT. PRODUCTS AND ACCESSORIES PROVIDED BY CASCADIA MUST BE CONFIRMED FOR SPECIFIC PROJECTS.

NOTE: NAIL FLANGE IS CONTINUOUS

CASCADIA WINDOWS LTD.
#101-5350 275TH STREET
LANGLEY, BC, CANADA V4W 0C1

DRAWING
TITLE:

UNIVERSAL SERIES [®] - WINDOW JAMB
STANDARD NAIL FLANGE INSTALLATION (CW-NF1)

DRAWING NO.:

NF-1.02

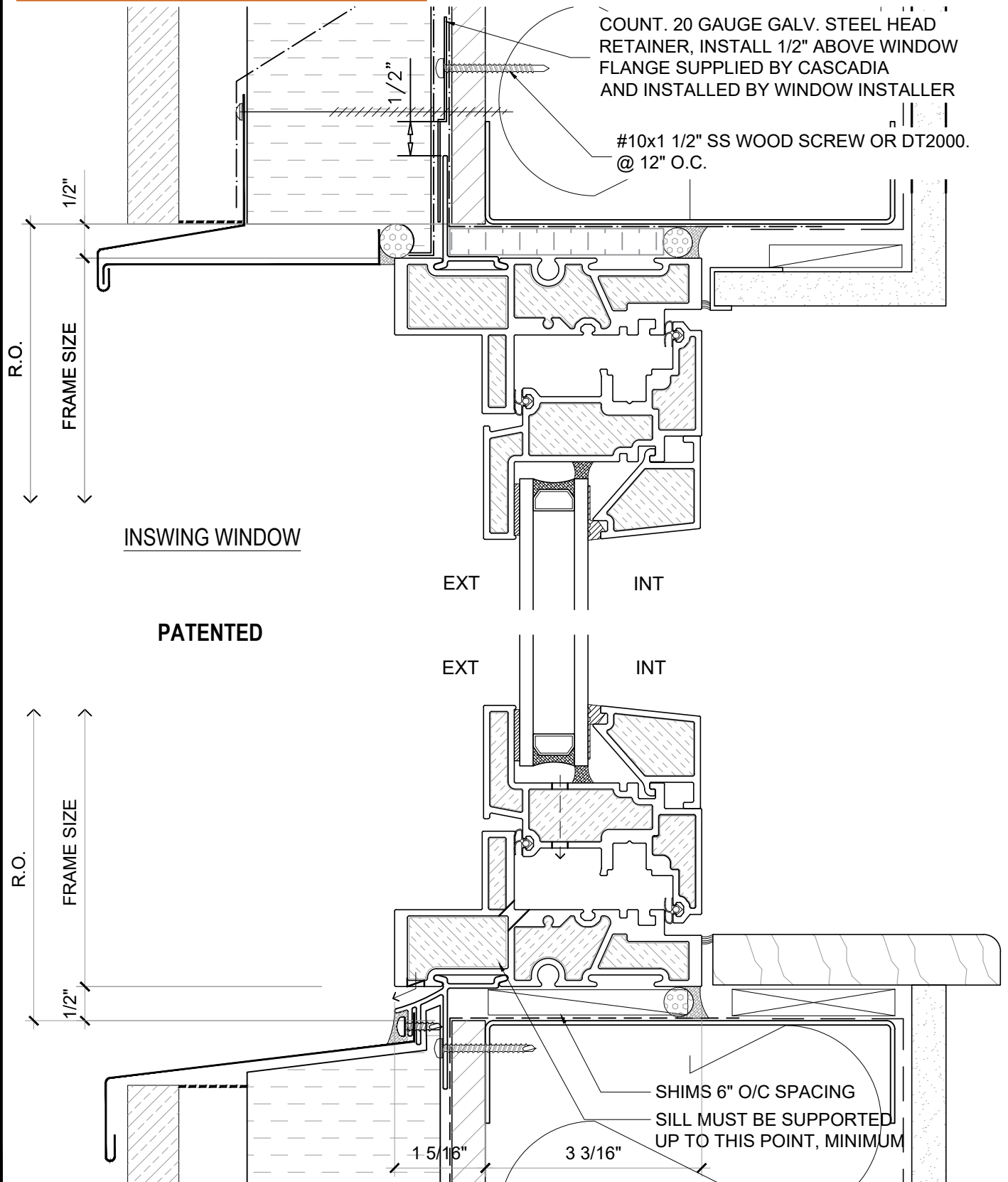
SCALE: 6" = 1'-0"

PATENTED

DATE: 26 AUGUST, 2020

DRAWN BY: CP

NEW: ENVIRONMENTAL PRODUCT DECLARATIONS (EPDs) NOW AVAILABLE



NOTE: THIS DRAFT DETAIL IS FOR GENERAL ARRANGEMENT PURPOSES ONLY, AND DOES NOT NECESSARILY REPRESENT A DETAIL THAT IS APPROPRIATE FOR A SPECIFIC PROJECT. PRODUCTS AND ACCESSORIES PROVIDED BY CASCADIA MUST BE CONFIRMED FOR SPECIFIC PROJECTS.

NOTE: NAIL FLANGE IS CONTINUOUS

CASCADIA WINDOWS LTD.
#101-5350 275TH STREET
LANGLEY, BC, CANADA V4W 0C1

DRAWING TITLE: UNIVERSAL SERIES [®] - WINDOW HEAD+SILL
STANDARD NAIL FLANGE INSTALLATION (CW-NF1)

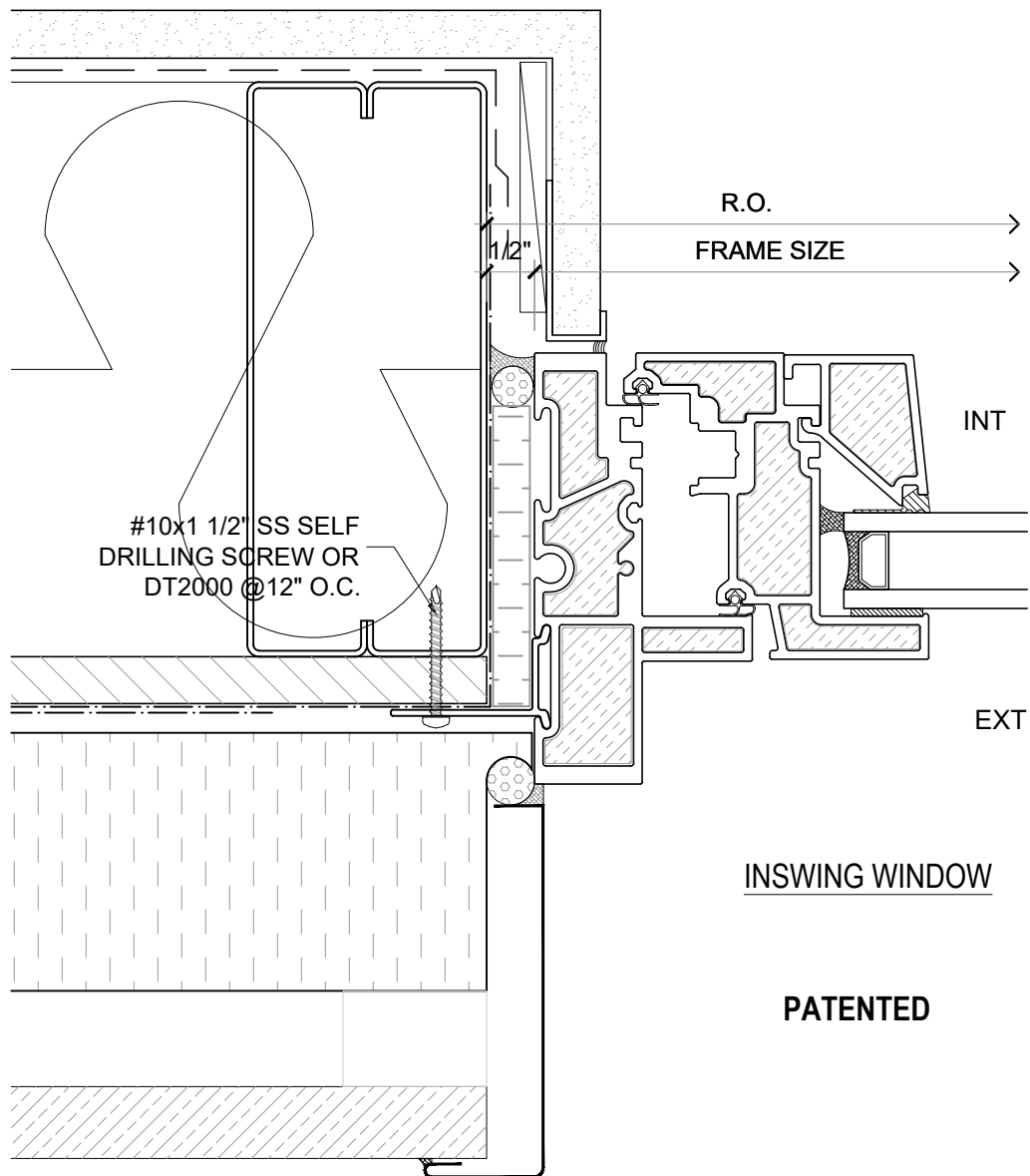
DRAWING NO.:
NF-1.03

SCALE: 6" = 1'-0"

PATENTED

DATE: 26 AUGUST, 2020

DRAWN BY: CP



INSWING WINDOW

PATENTED

NOTE: THIS DRAFT DETAIL IS FOR GENERAL ARRANGEMENT PURPOSES ONLY, AND DOES NOT NECESSARILY REPRESENT A DETAIL THAT IS APPROPRIATE FOR A SPECIFIC PROJECT. PRODUCTS AND ACCESSORIES PROVIDED BY CASCADIA MUST BE CONFIRMED FOR SPECIFIC PROJECTS.

NOTE: NAIL FLANGE IS CONTINUOUS

CASCADIA WINDOWS LTD.
#101-5350 275TH STREET
LANGLEY, BC, CANADA V4W 0C1

DRAWING
TITLE:

UNIVERSAL SERIES ① - WINDOW JAMB
STANDARD NAIL FLANGE INSTALLATION (CW-NF1)

DRAWING NO.:

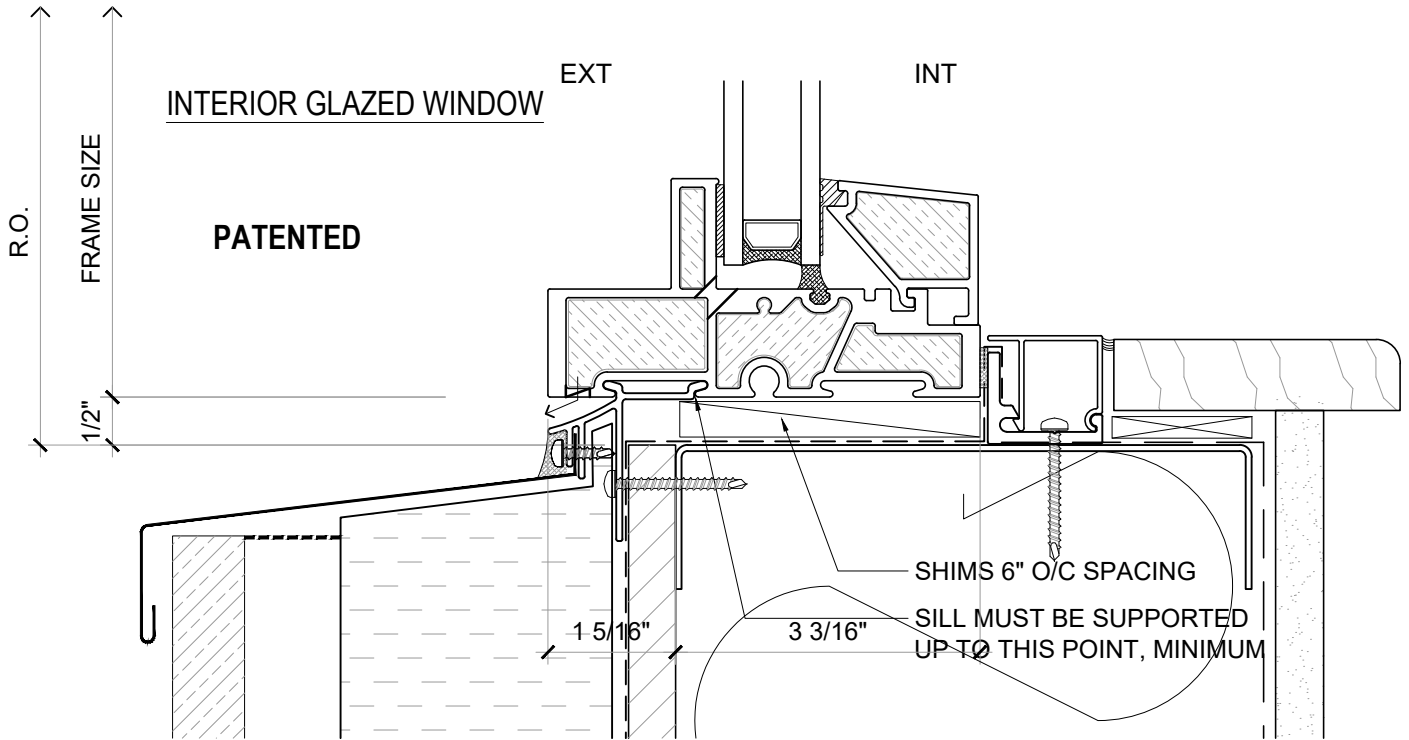
NF-1.04

SCALE: 6" = 1'-0"

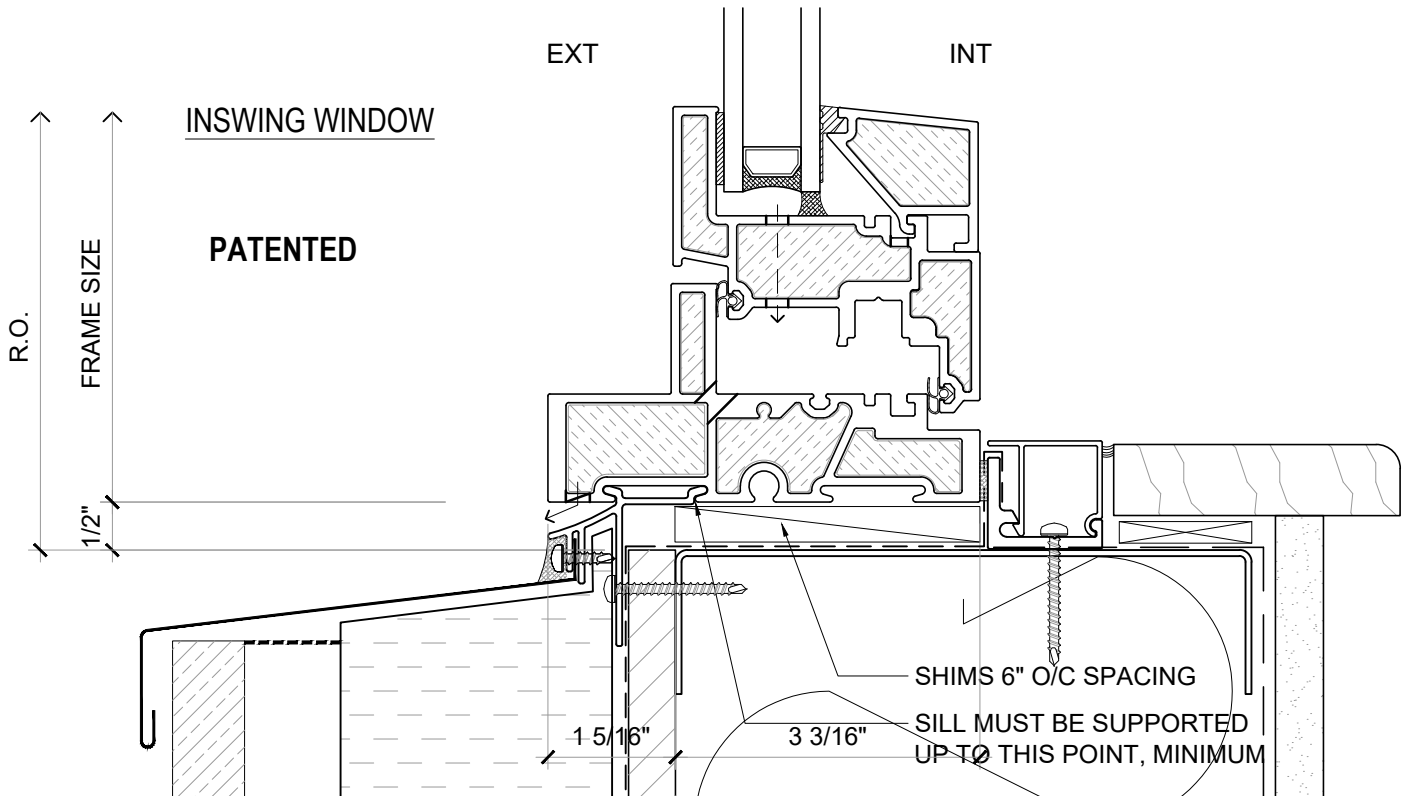
PATENTED

DATE: 26 AUGUST, 2020

DRAWN BY: CP



ALTERNATE SILL DETAILS



NOTE: THIS DRAFT DETAIL IS FOR GENERAL ARRANGEMENT PURPOSES ONLY, AND DOES NOT NECESSARILY REPRESENT A DETAIL THAT IS APPROPRIATE FOR A SPECIFIC PROJECT. PRODUCTS AND ACCESSORIES PROVIDED BY CASCADIA MUST BE CONFIRMED FOR SPECIFIC PROJECTS.

NOTE: NAIL FLANGE IS CONTINUOUS

CASCADIA WINDOWS LTD.
#101-5350 275TH STREET
LANGLEY, BC, CANADA V4W 0C1

DRAWING
TITLE:

UNIVERSAL SERIES [®] - WINDOW SILLS
STANDARD NAIL FLANGE INSTALLATION (CW-NF2) & SILL ANGLE

DRAWING NO.:

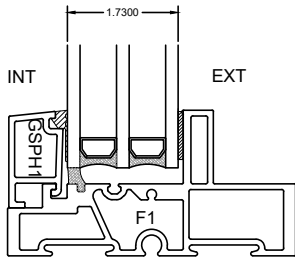
NF-1.05

SCALE: 6" = 1'-0"

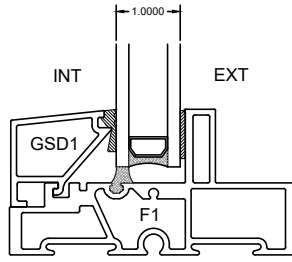
PATENTED

DATE: 26 AUGUST, 2020

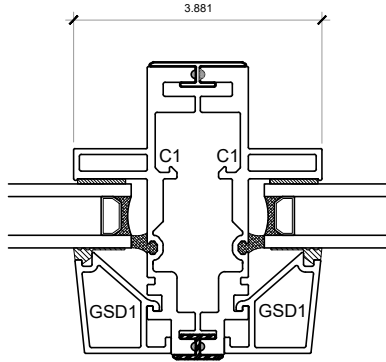
DRAWN BY: CP



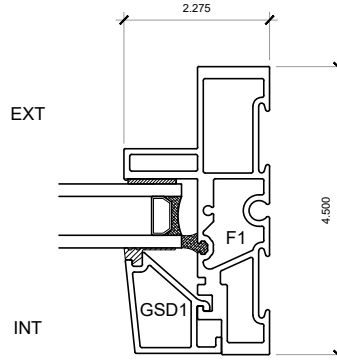
TRIPLE GLAZED
GLAZING STOP



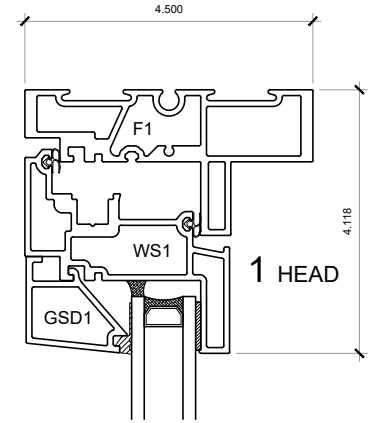
DOUBLE GLAZED
GLAZING STOP



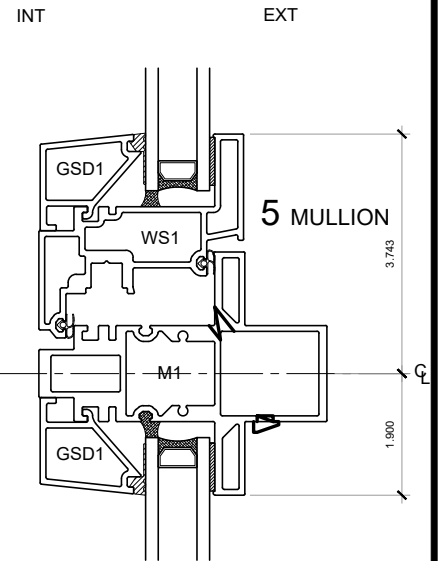
4 COUPLED MULLION



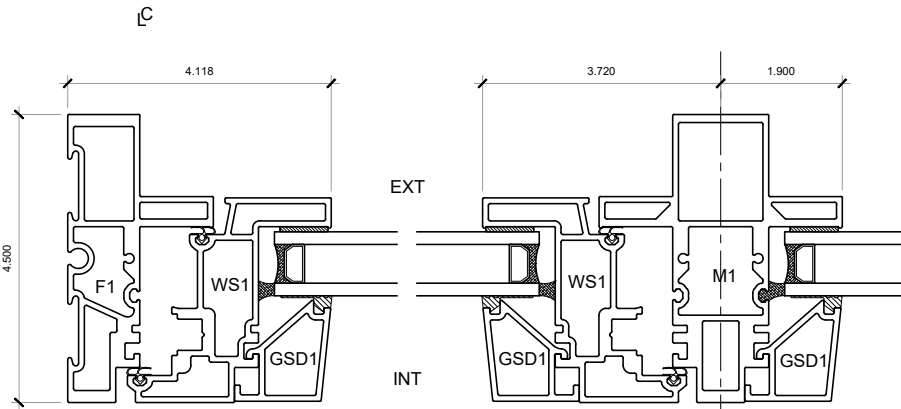
3 FIXED JAMB



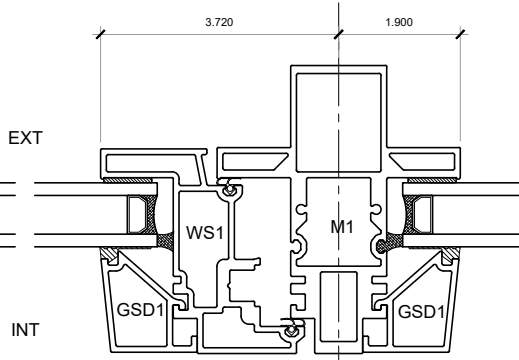
1 HEAD



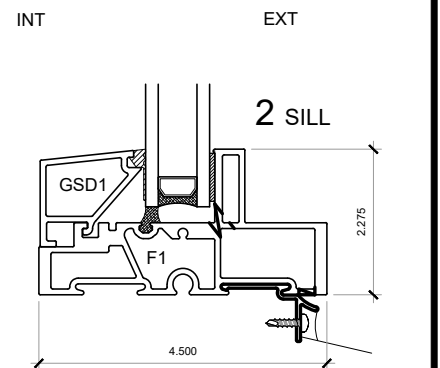
5 MULLION



6 OPERABLE JAMB



5 MULLION



2 SILL

NOTE: THIS DRAFT DETAIL IS FOR GENERAL ARRANGEMENT PURPOSES ONLY, AND DOES NOT NECESSARILY REPRESENT A DETAIL THAT IS APPROPRIATE FOR A SPECIFIC PROJECT. PRODUCTS AND ACCESSORIES PROVIDED BY CASCADIA MUST BE CONFIRMED FOR SPECIFIC PROJECTS.

NOTE: NAIL FLANGE IS CONTINUOUS

CASCADIA WINDOWS LTD.
#101-5350 275TH STREET
LANGLEY, BC, CANADA V4W 0C1

DRAWING
TITLE:

UNIVERSAL SERIES ® - INSWING WINDOW
PRODUCT DRAWINGS

DRAWING NO.:

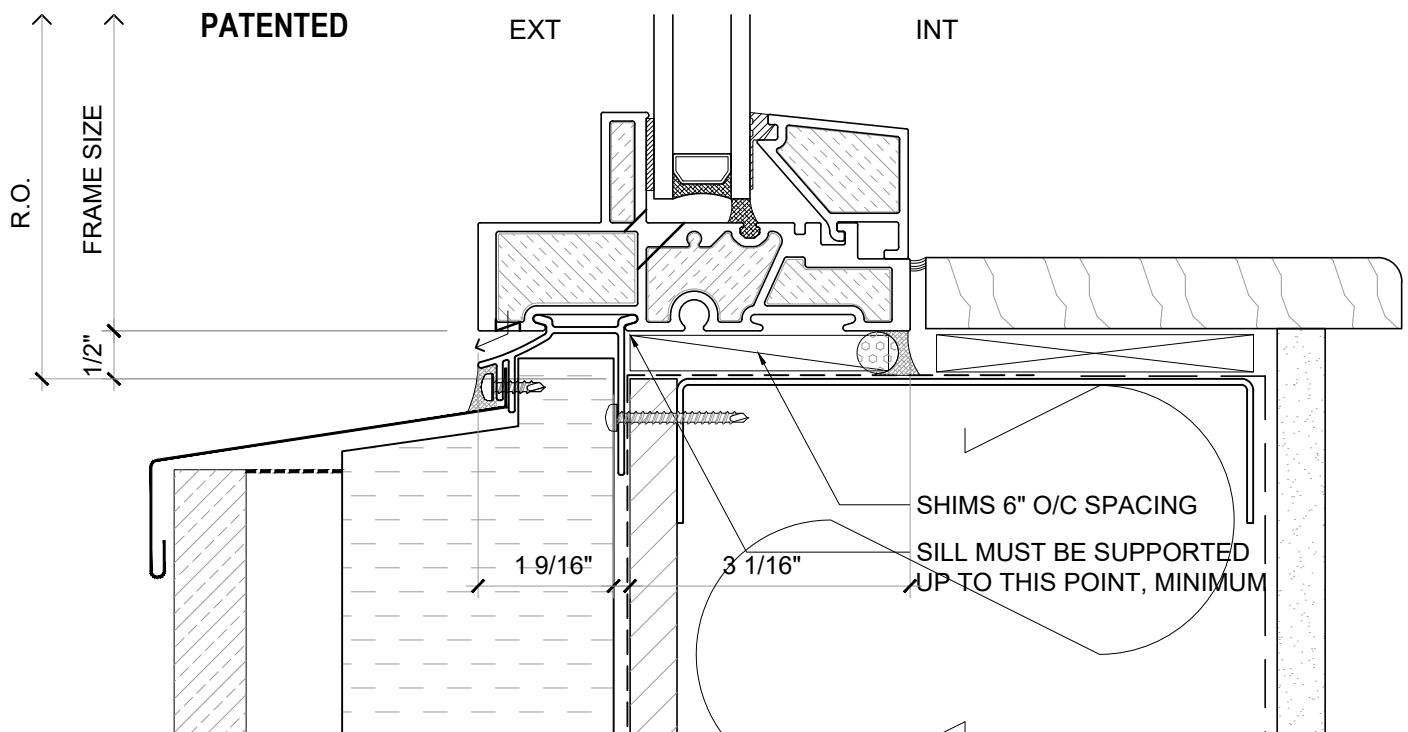
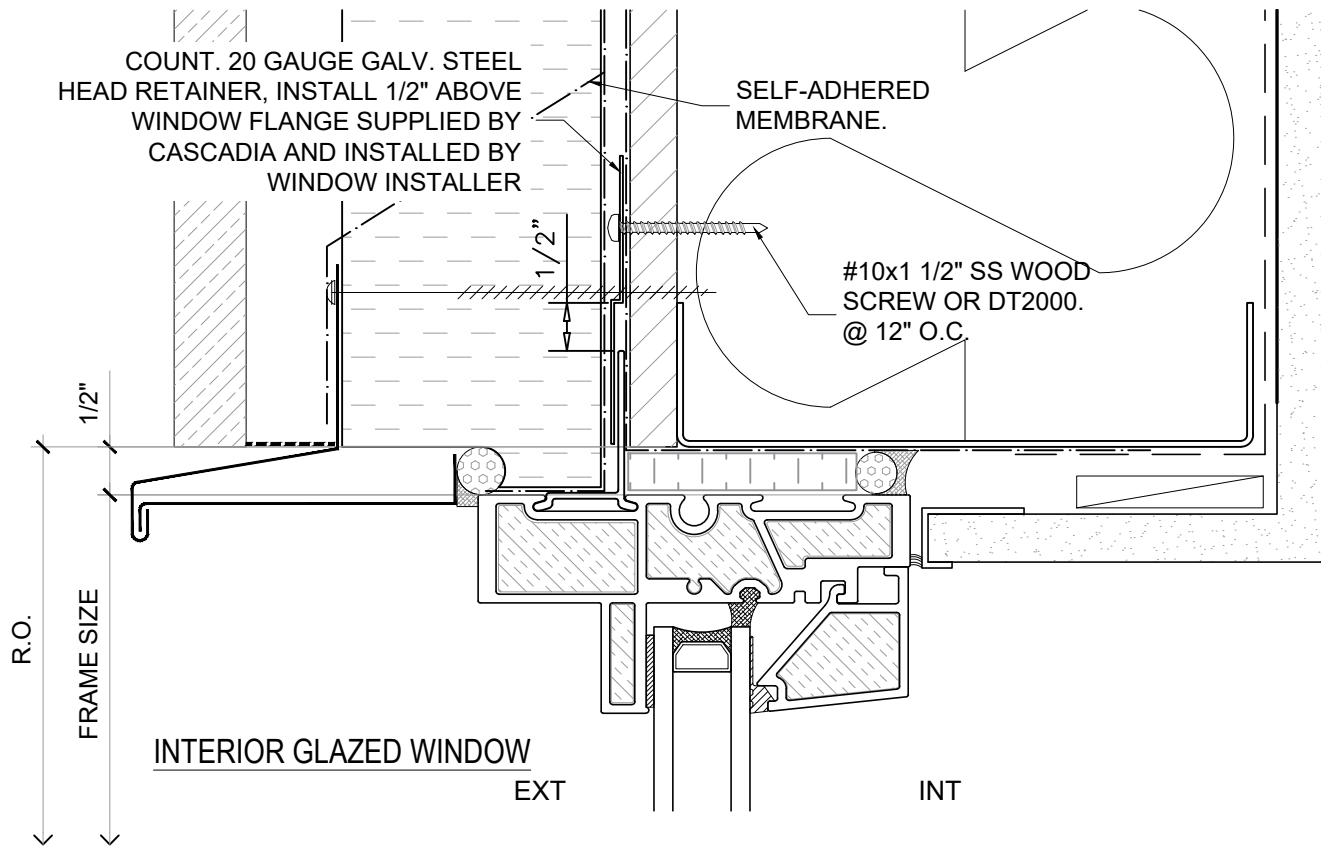
NF-2.01

SCALE: 4" = 1'-0"

PATENTED

DATE: 26 AUGUST, 2020

DRAWN BY: CP



NOTE: THIS DRAFT DETAIL IS FOR GENERAL ARRANGEMENT PURPOSES ONLY, AND DOES NOT NECESSARILY REPRESENT A DETAIL THAT IS APPROPRIATE FOR A SPECIFIC PROJECT. PRODUCTS AND ACCESSORIES PROVIDED BY CASCADIA MUST BE CONFIRMED FOR SPECIFIC PROJECTS.

NOTE: NAIL FLANGE IS CONTINUOUS

CASCADIA WINDOWS LTD.
#101-5350 275TH STREET
LANGLEY, BC, CANADA V4W 0C1

DRAWING TITLE: UNIVERSAL SERIES ® - WINDOW HEAD+SILL
REVERSED NAIL FLANGE INSTALLATION (CW-NF1)

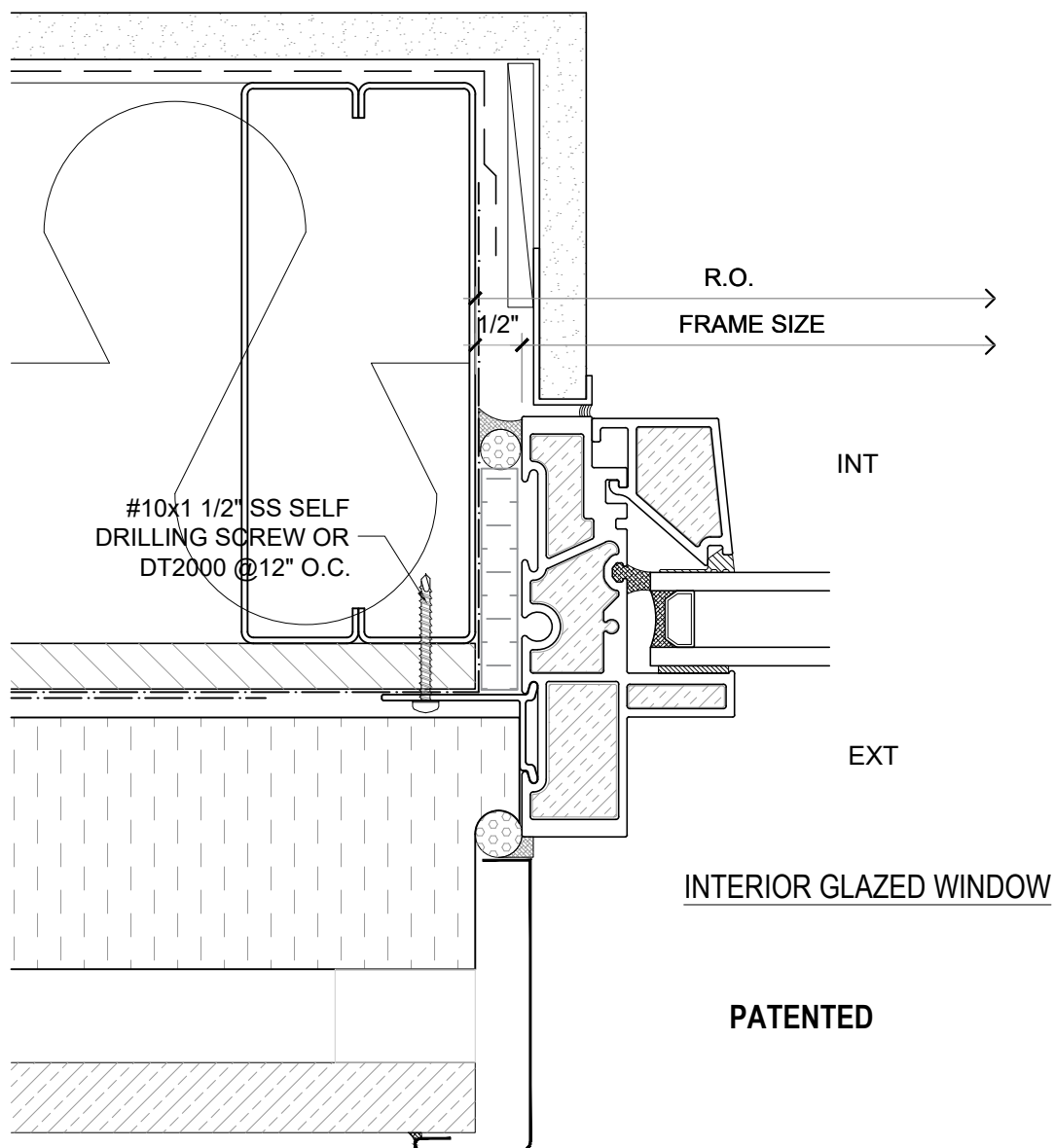
DRAWING NO.: NF-1.01

SCALE: 6" = 1'-0"

PATENTED

DATE: 26 AUGUST, 2020

DRAWN BY: CP



NOTE: THIS DRAFT DETAIL IS FOR GENERAL ARRANGEMENT PURPOSES ONLY, AND DOES NOT NECESSARILY REPRESENT A DETAIL THAT IS APPROPRIATE FOR A SPECIFIC PROJECT. PRODUCTS AND ACCESSORIES PROVIDED BY CASCADIA MUST BE CONFIRMED FOR SPECIFIC PROJECTS.

NOTE: NAIL FLANGE IS CONTINUOUS

CASCADIA WINDOWS LTD.
 #101-5350 275TH STREET
 LANGLEY, BC, CANADA V4W 0C1

DRAWING
 TITLE:

UNIVERSAL SERIES ① - WINDOW JAMB
 REVERSED NAIL FLANGE INSTALLATION (CW-NF1)

DRAWING NO.:

NF-1.02

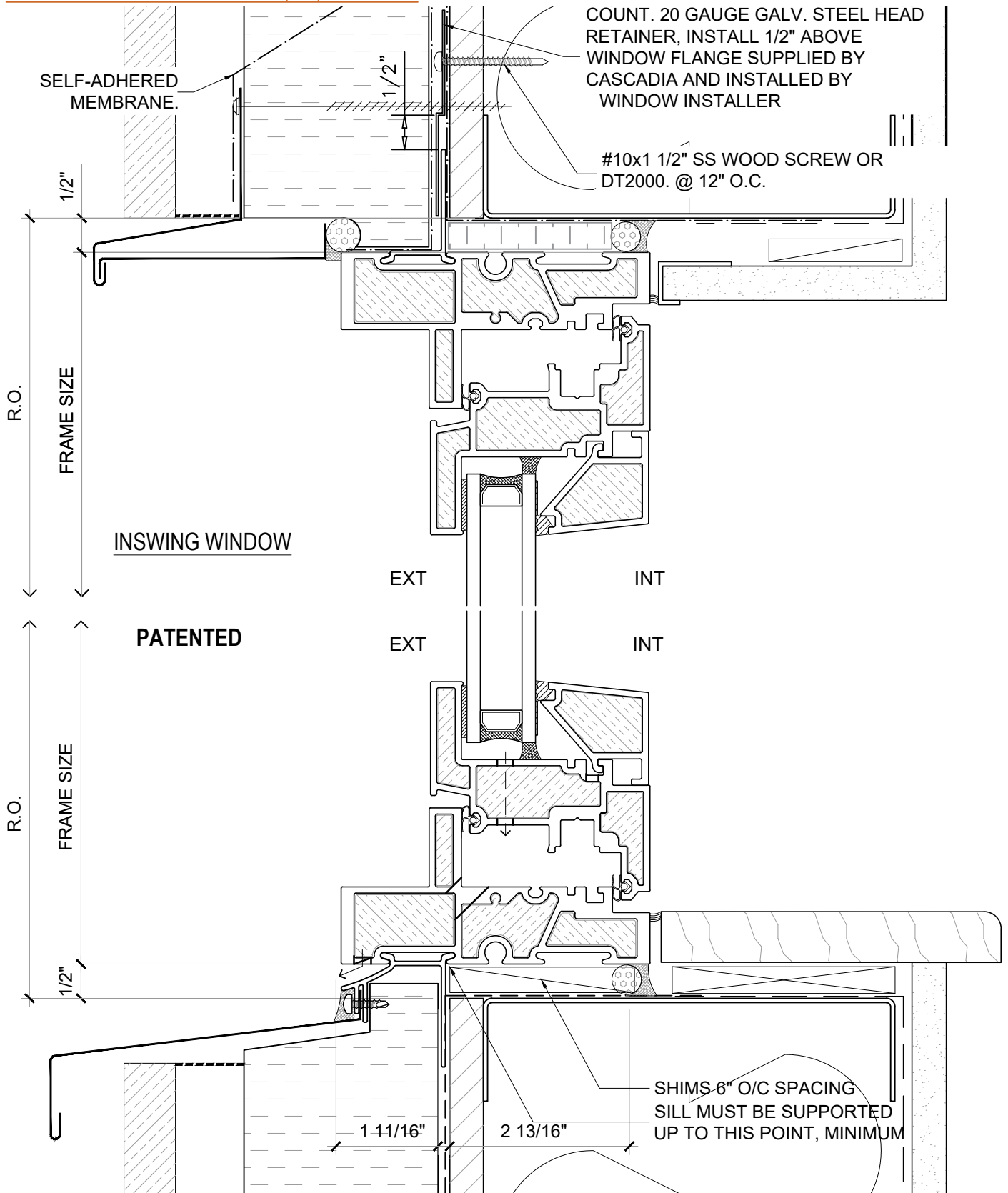
SCALE: 6" = 1'-0"

PATENTED

DATE: 26 AUGUST, 2020

DRAWN BY: CP

NEW: ENVIRONMENTAL PRODUCT DECLARATIONS (EPDs) NOW AVAILABLE



NOTE: THIS DRAFT DETAIL IS FOR GENERAL ARRANGEMENT PURPOSES ONLY, AND DOES NOT NECESSARILY REPRESENT A DETAIL THAT IS APPROPRIATE FOR A SPECIFIC PROJECT. PRODUCTS AND ACCESSORIES PROVIDED BY CASCADIA MUST BE CONFIRMED FOR SPECIFIC PROJECTS.

NOTE: NAIL FLANGE IS CONTINUOUS

CASCADIA WINDOWS LTD.
#101-5350 275TH STREET
LANGLEY, BC, CANADA V4W 0C1

DRAWING TITLE: UNIVERSAL SERIES ® - WINDOW HEAD+SILL
REVERSED NAIL FLANGE INSTALLATION (CW-NF1)

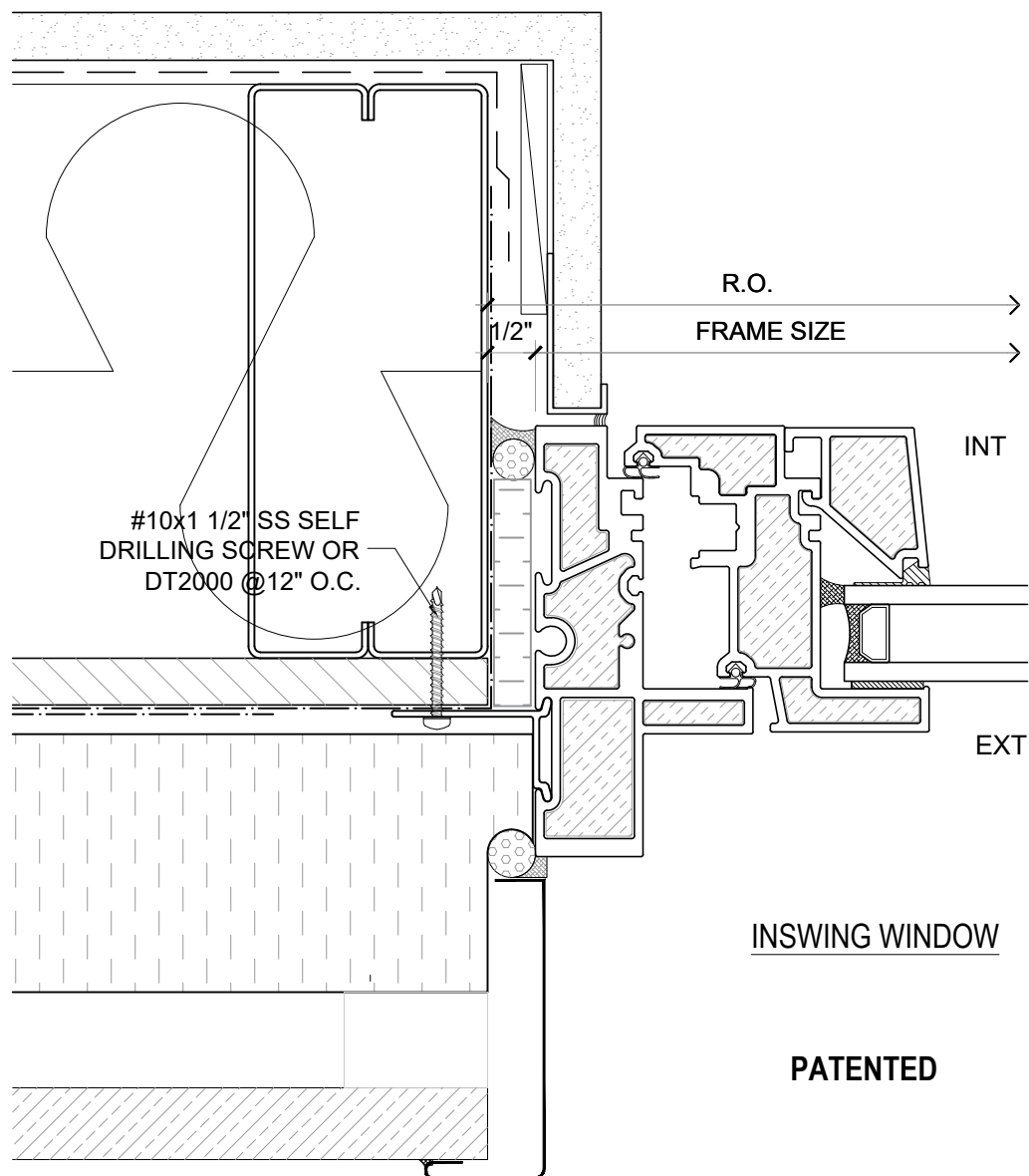
DRAWING NO.: NF-1.03

SCALE: 6" = 1'-0"

PATENTED

DATE: 26 AUGUST, 2020

DRAWN BY: CP



NOTE: THIS DRAFT DETAIL IS FOR GENERAL ARRANGEMENT PURPOSES ONLY, AND DOES NOT NECESSARILY REPRESENT A DETAIL THAT IS APPROPRIATE FOR A SPECIFIC PROJECT. PRODUCTS AND ACCESSORIES PROVIDED BY CASCADIA MUST BE CONFIRMED FOR SPECIFIC PROJECTS.

NOTE: NAIL FLANGE IS CONTINUOUS

CASCADIA WINDOWS LTD.
#101-5350 275TH STREET
LANGLEY, BC, CANADA V4W 0C1

DRAWING
TITLE:

UNIVERSAL SERIES ® - WINDOW JAMB
REVERSED NAIL FLANGE INSTALLATION (CW-NF1)

DRAWING NO.:

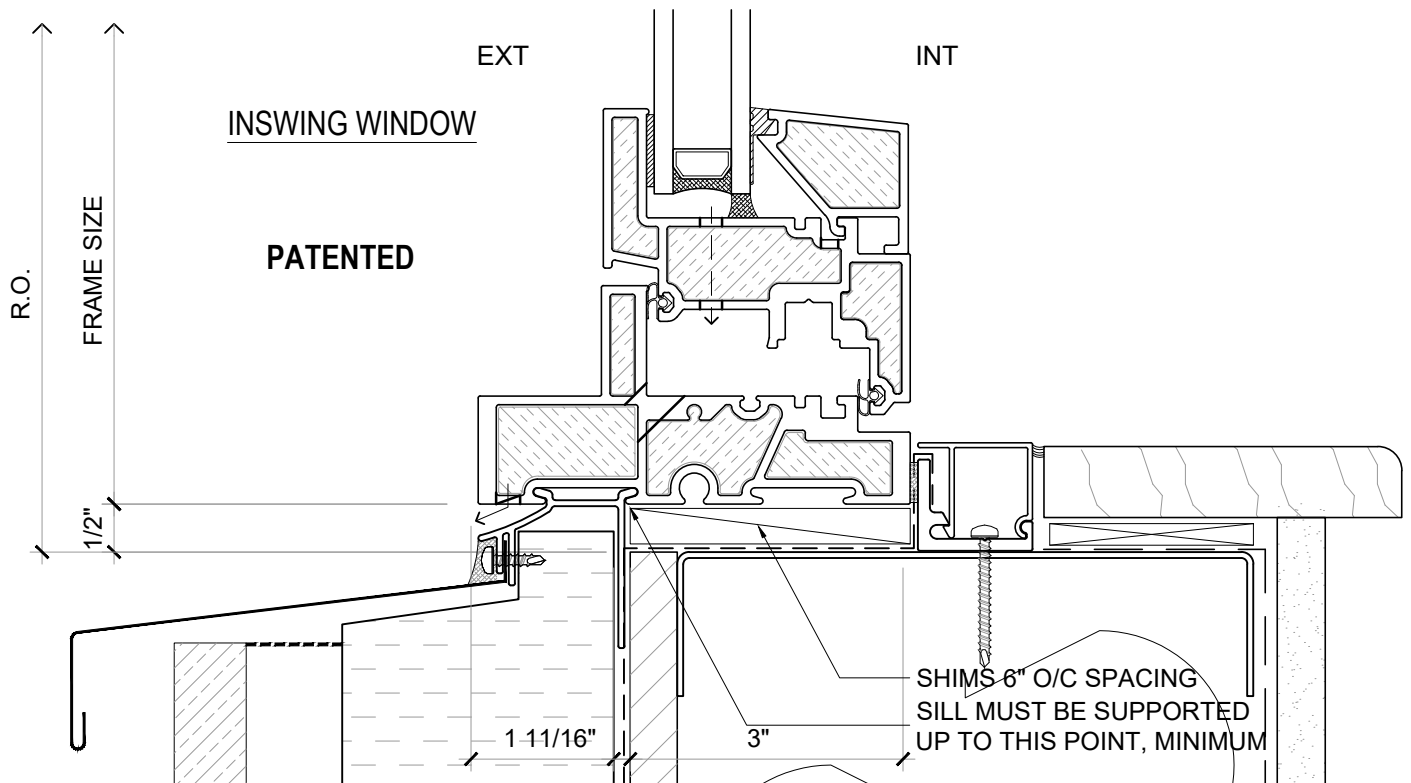
NF-1.04

SCALE: 6" = 1'-0"

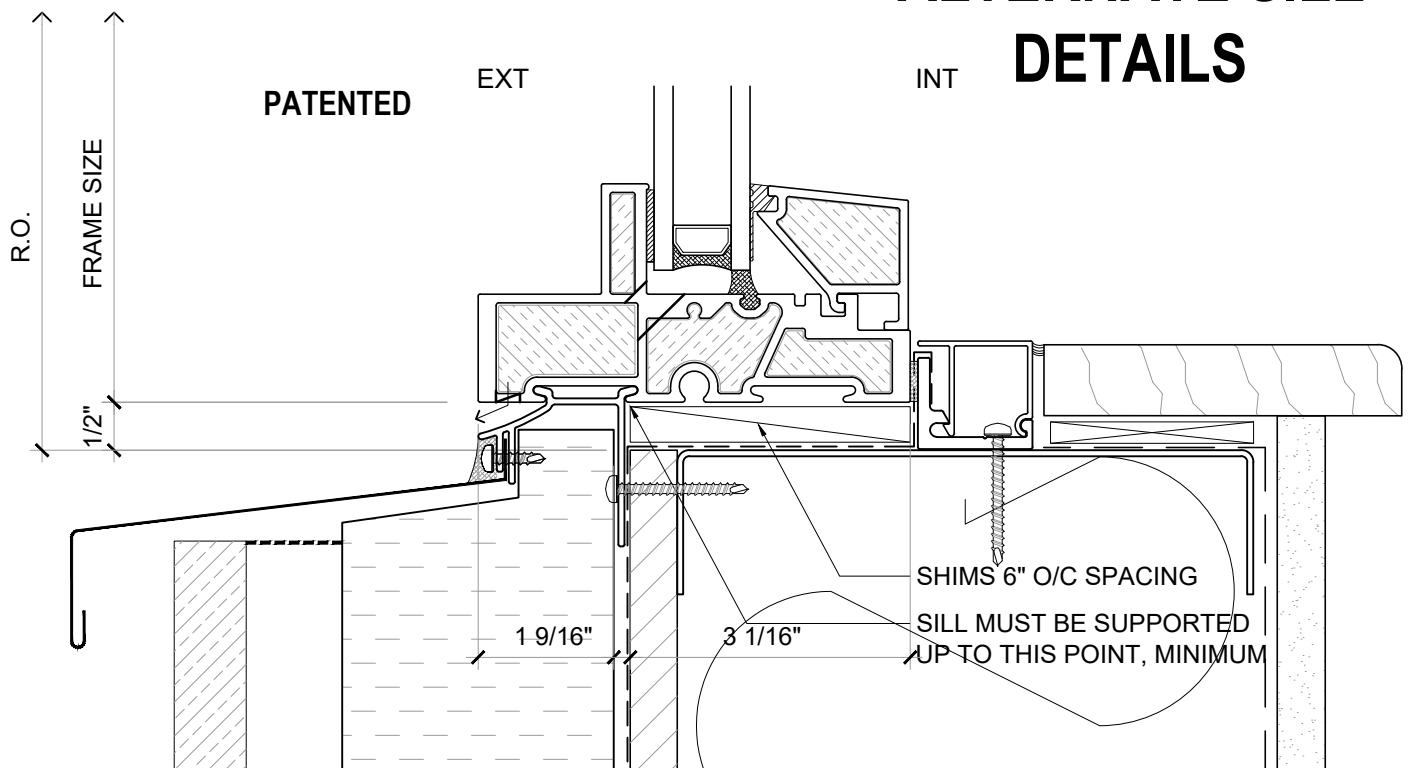
PATENTED

DATE: 26 AUGUST, 2020

DRAWN BY: CP



INTERIOR GLAZED WINDOW



ALTERNATE SILL DETAILS

NOTE: THIS DRAFT DETAIL IS FOR GENERAL ARRANGEMENT PURPOSES ONLY, AND DOES NOT NECESSARILY REPRESENT A DETAIL THAT IS APPROPRIATE FOR A SPECIFIC PROJECT. PRODUCTS AND ACCESSORIES PROVIDED BY CASCADIA MUST BE CONFIRMED FOR SPECIFIC PROJECTS.

NOTE: NAIL FLANGE IS CONTINUOUS

CASCADIA WINDOWS LTD.
#101-5350 275TH STREET
LANGLEY, BC, CANADA V4W 0C1

DRAWING
TITLE:

UNIVERSAL SERIES **D** - WINDOW SILLS
REVERSED NAIL FLANGE INSTALLATION (CW-NF3)

DRAWING NO.:

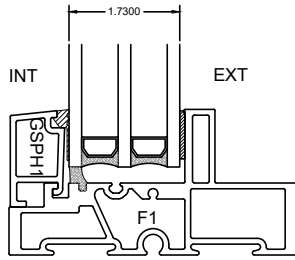
NF-1.05

SCALE: 6" = 1'-0"

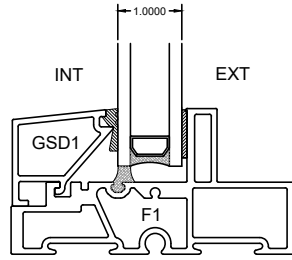
PATENTED

DATE: 26 AUGUST, 2020

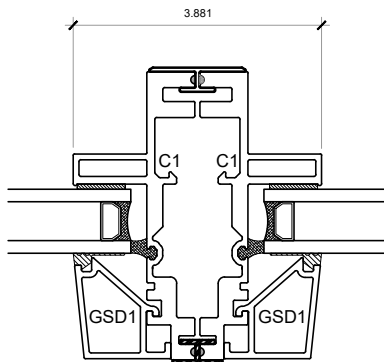
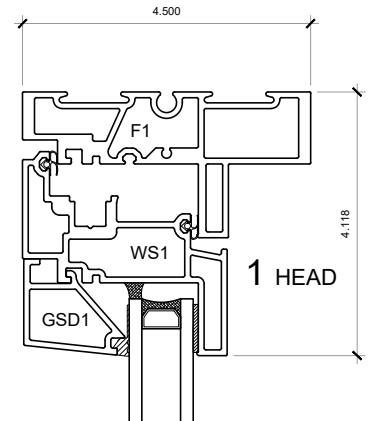
DRAWN BY: CP



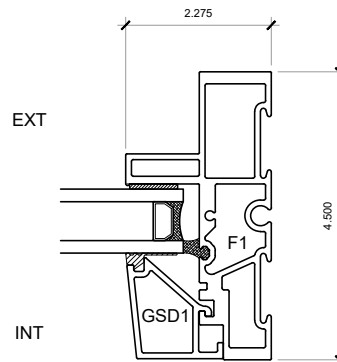
TRIPLE GLAZED
GLAZING STOP



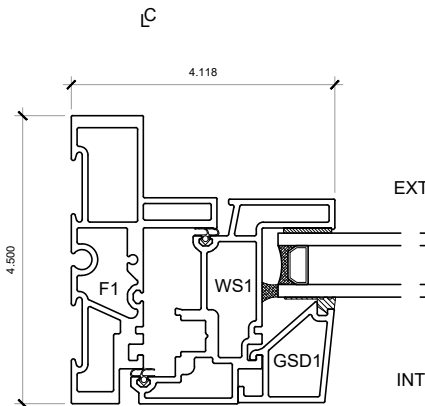
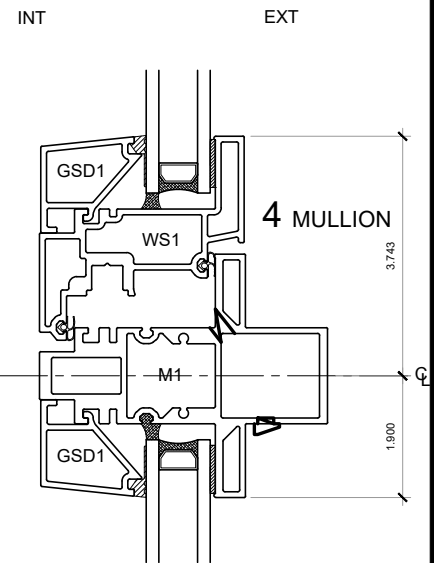
DOUBLE GLAZED
GLAZING STOP



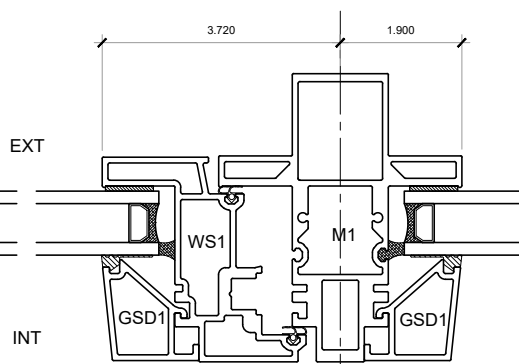
2 COUPLED MULLION



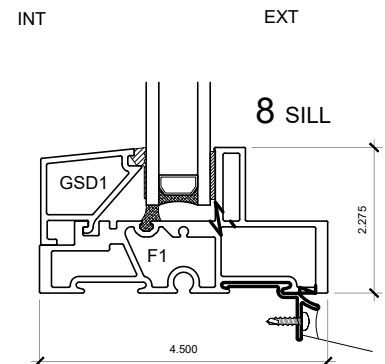
3 FIXED JAMB



5 OPERABLE JAMB



6 MULLION



NOTE: THIS DRAFT DETAIL IS FOR GENERAL ARRANGEMENT PURPOSES ONLY, AND DOES NOT NECESSARILY REPRESENT A DETAIL THAT IS APPROPRIATE FOR A SPECIFIC PROJECT. PRODUCTS AND ACCESSORIES PROVIDED BY CASCADIA MUST BE CONFIRMED FOR SPECIFIC PROJECTS.

NOTE: NAIL FLANGE IS CONTINUOUS

CASCADIA WINDOWS LTD.
#101-5350 275TH STREET
LANGLEY, BC, CANADA V4W 0C1

DRAWING
TITLE:

UNIVERSAL SERIES ® - INSWING WINDOW
PRODUCT DRAWING

DRAWING NO.:

NF-2.01

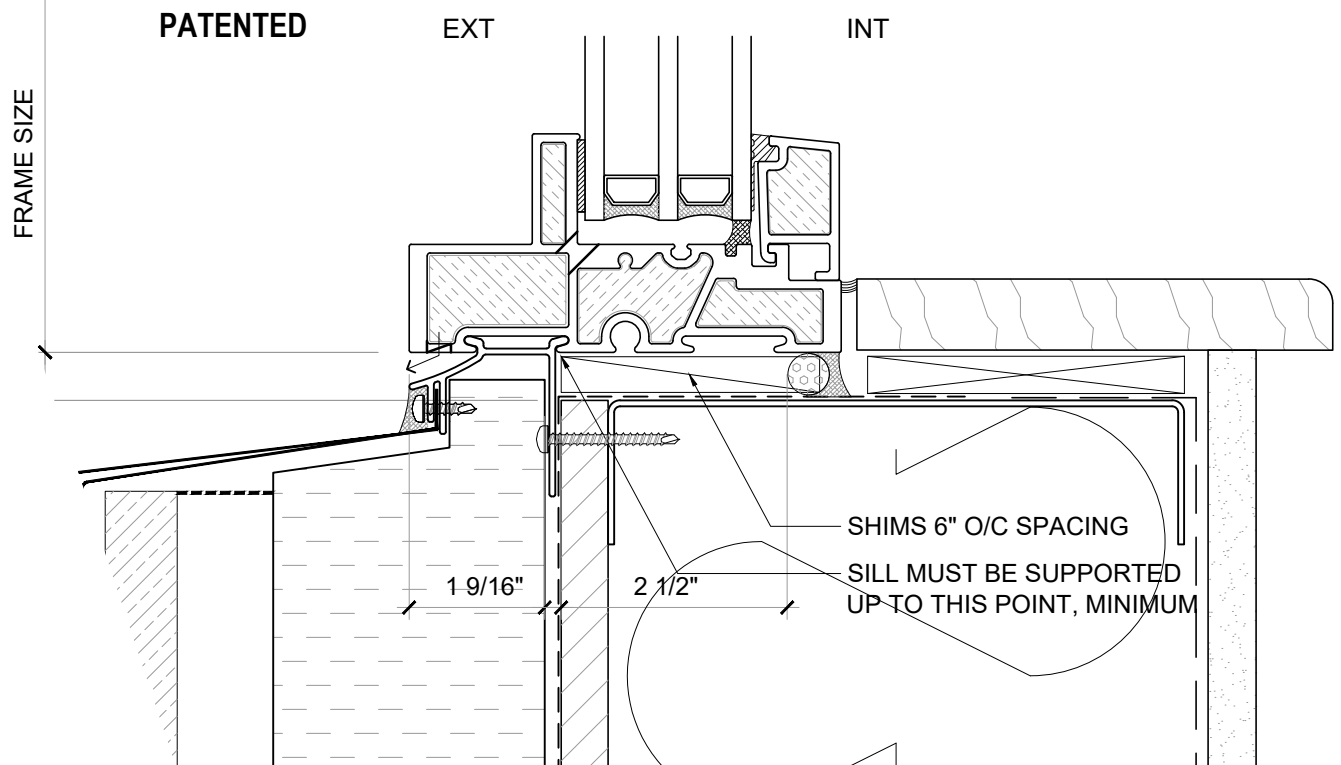
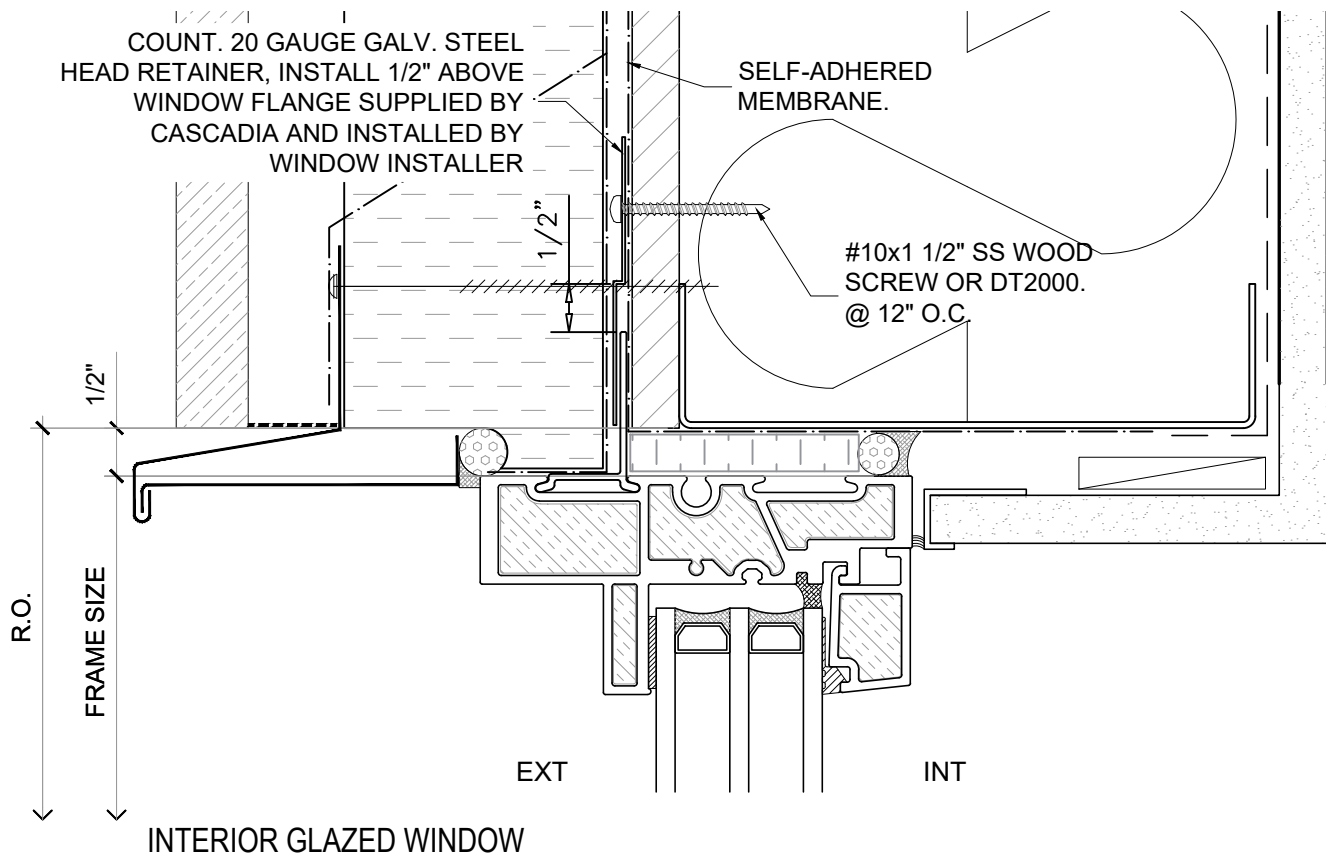
SCALE: 4" = 1'-0"

PATENTED

DATE: 26 AUGUST, 2020

DRAWN BY: CP

NEW: ENVIRONMENTAL PRODUCT DECLARATIONS (EPDs) NOW AVAILABLE



NOTE: THIS DRAFT DETAIL IS FOR GENERAL ARRANGEMENT PURPOSES ONLY, AND DOES NOT NECESSARILY REPRESENT A DETAIL THAT IS APPROPRIATE FOR A SPECIFIC PROJECT. PRODUCTS AND ACCESSORIES PROVIDED BY CASCADIA MUST BE CONFIRMED FOR SPECIFIC PROJECTS.

NOTE: NAIL FLANGE IS CONTINUOUS

CASCADIA WINDOWS LTD.
#101-5350 275TH STREET
LANGLEY, BC, CANADA V4W 0C1

DRAWING TITLE: UNIVERSAL SERIES ® - WINDOW HEAD+SILL
REVERSED NAIL FLANGE INSTALLATION (CW-NF1)

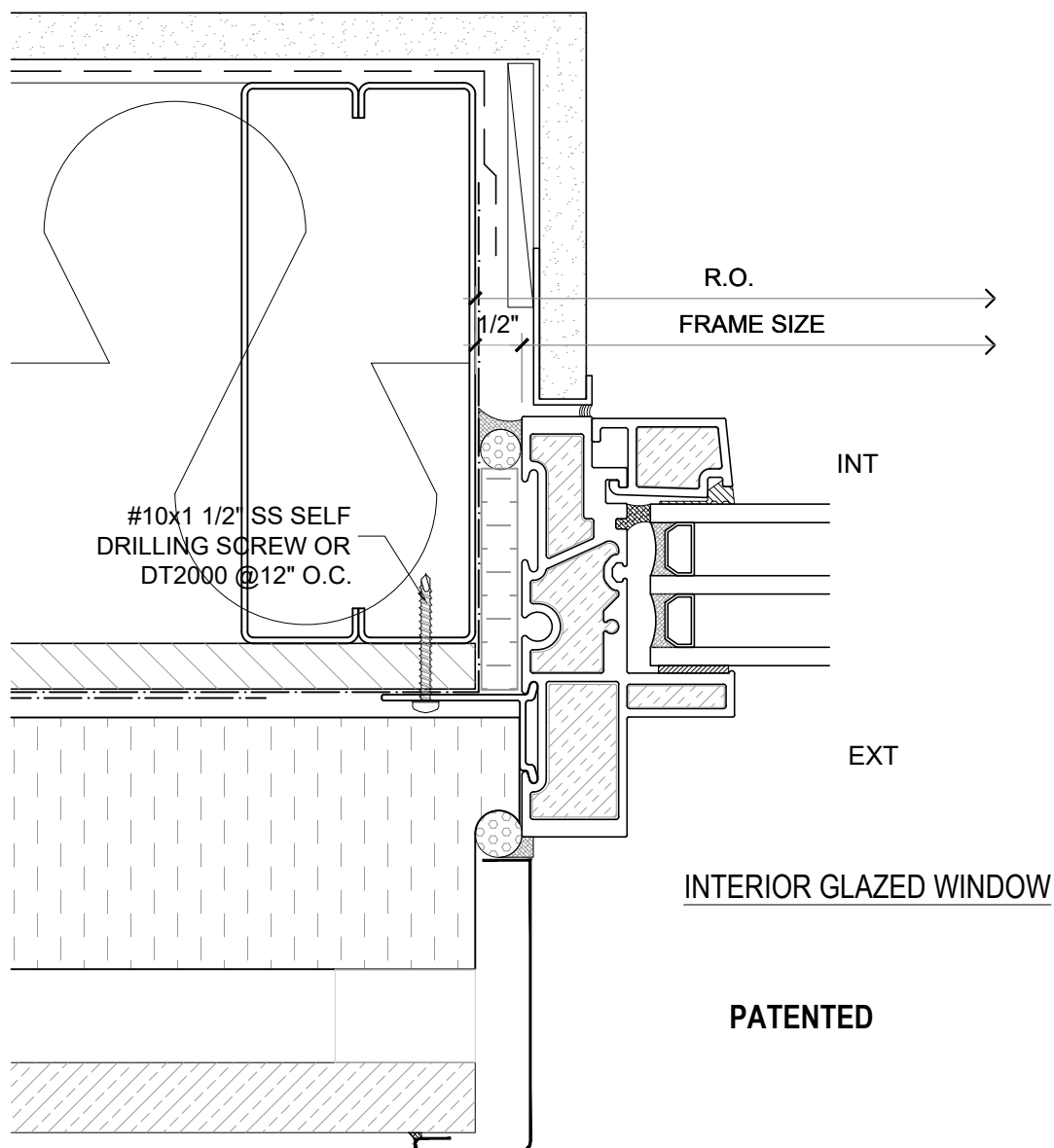
DRAWING NO.: NF-1.01

SCALE: 6" = 1'-0"

PATENTED

DATE: 27 AUGUST, 2020

DRAWN BY: CP



NOTE: THIS DRAFT DETAIL IS FOR GENERAL ARRANGEMENT PURPOSES ONLY, AND DOES NOT NECESSARILY REPRESENT A DETAIL THAT IS APPROPRIATE FOR A SPECIFIC PROJECT. PRODUCTS AND ACCESSORIES PROVIDED BY CASCADIA MUST BE CONFIRMED FOR SPECIFIC PROJECTS.

NOTE: NAIL FLANGE IS CONTINUOUS

CASCADIA WINDOWS LTD.
#101-5350 275TH STREET
LANGLEY, BC, CANADA V4W 0C1

DRAWING
TITLE:

UNIVERSAL SERIES ① - WINDOW JAMB
REVERSED NAIL FLANGE INSTALLATION (CW-NF1)

DRAWING NO.:

NF-1.02

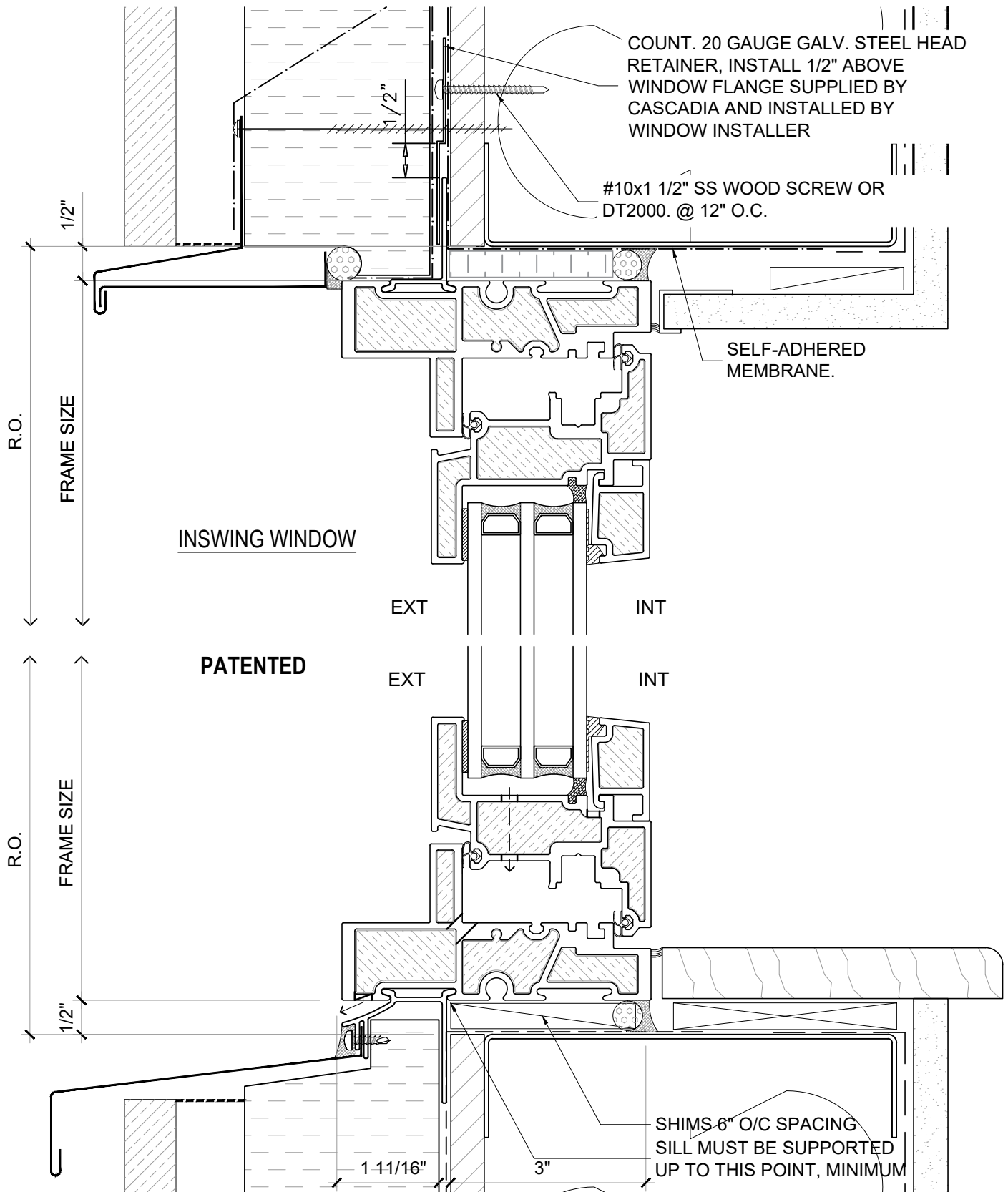
SCALE: 6" = 1'-0"

PATENTED

DATE: 27 AUGUST, 2020

DRAWN BY: CP

NEW: ENVIRONMENTAL PRODUCT DECLARATIONS (EPDs) NOW AVAILABLE



NOTE: THIS DRAFT DETAIL IS FOR GENERAL ARRANGEMENT PURPOSES ONLY, AND DOES NOT NECESSARILY REPRESENT A DETAIL THAT IS APPROPRIATE FOR A SPECIFIC PROJECT. PRODUCTS AND ACCESSORIES PROVIDED BY CASCADIA MUST BE CONFIRMED FOR SPECIFIC PROJECTS.

NOTE: NAIL FLANGE IS CONTINUOUS

CASCADIA WINDOWS LTD.
#101-5350 275TH STREET
LANGLEY, BC, CANADA V4W 0C1

DRAWING TITLE: UNIVERSAL SERIES ® - WINDOW HEAD+SILL
REVERSED NAIL FLANGE INSTALLATION (CW-NF1)

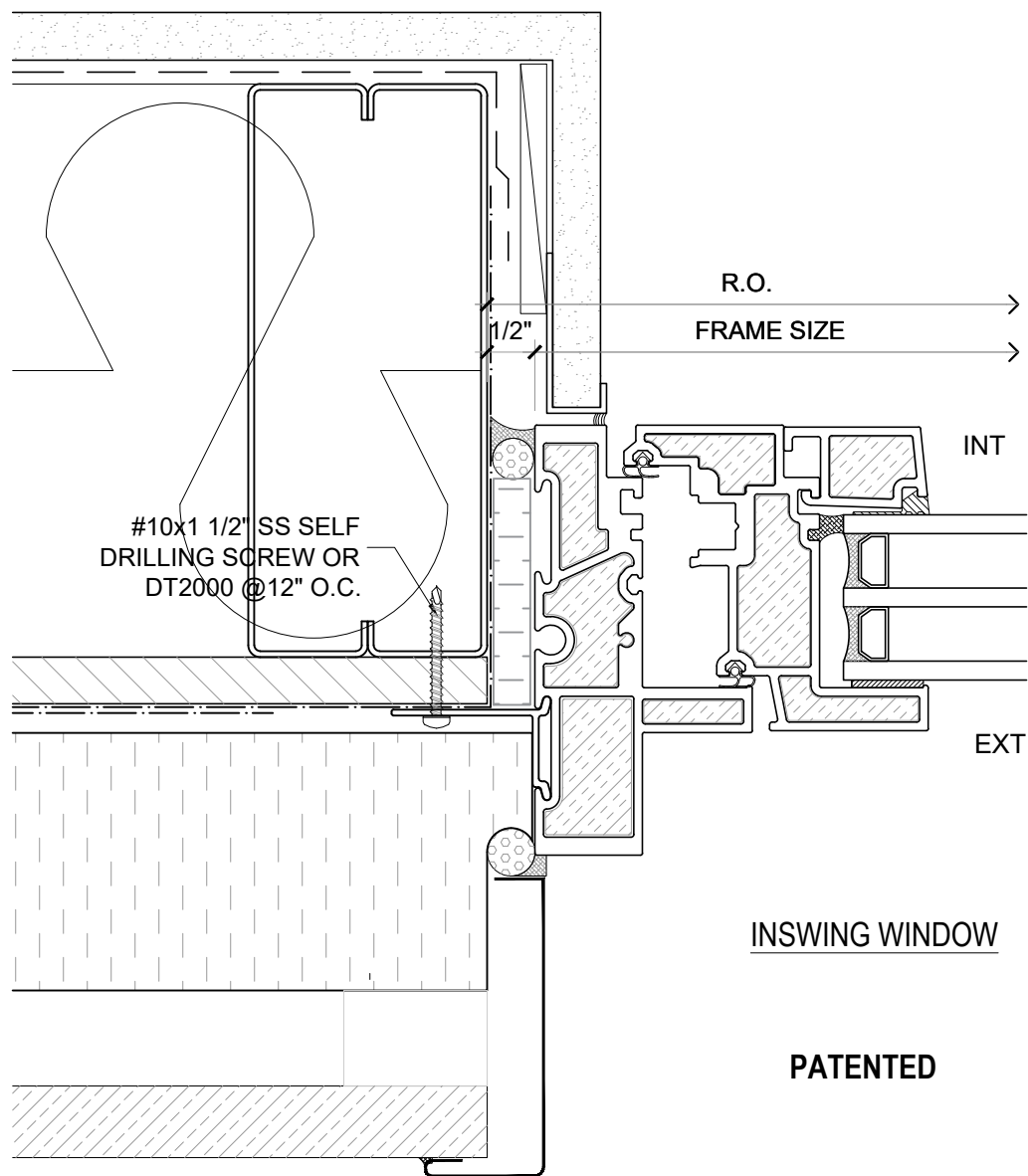
DRAWING NO.: NF-1.03

SCALE: 6" = 1'-0"

PATENTED

DATE: 27 AUGUST, 2020

DRAWN BY: CP



NOTE: THIS DRAFT DETAIL IS FOR GENERAL ARRANGEMENT PURPOSES ONLY, AND DOES NOT NECESSARILY REPRESENT A DETAIL THAT IS APPROPRIATE FOR A SPECIFIC PROJECT. PRODUCTS AND ACCESSORIES PROVIDED BY CASCADIA MUST BE CONFIRMED FOR SPECIFIC PROJECTS.

NOTE: NAIL FLANGE IS CONTINUOUS

CASCADIA WINDOWS LTD.
 #101-5350 275TH STREET
 LANGLEY, BC, CANADA V4W 0C1

DRAWING
 TITLE:

UNIVERSAL SERIES ® - WINDOW JAMB
REVERSED NAIL FLANGE INSTALLATION (CW-NF1)

DRAWING NO.:

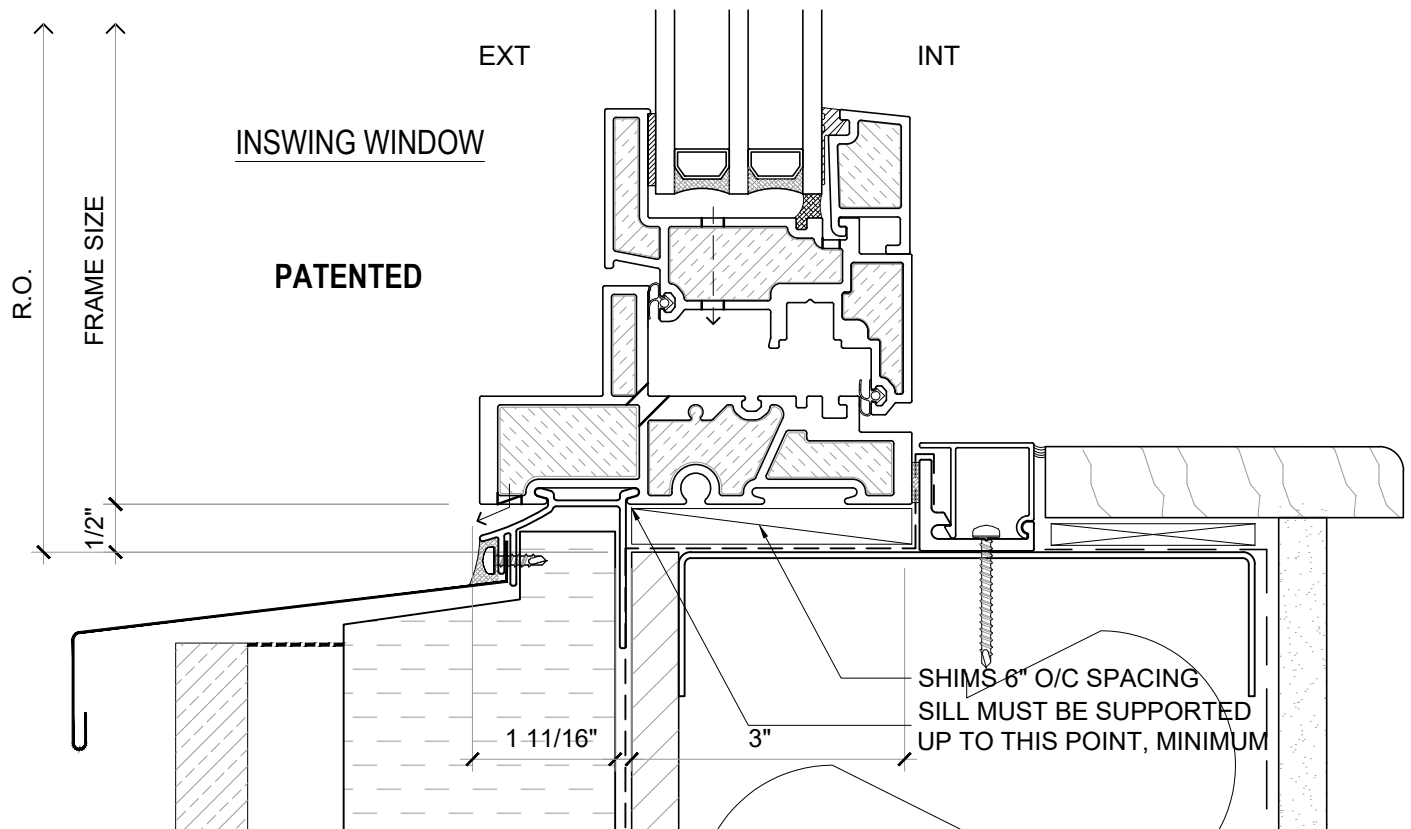
NF-1.04

SCALE: 6" = 1'-0"

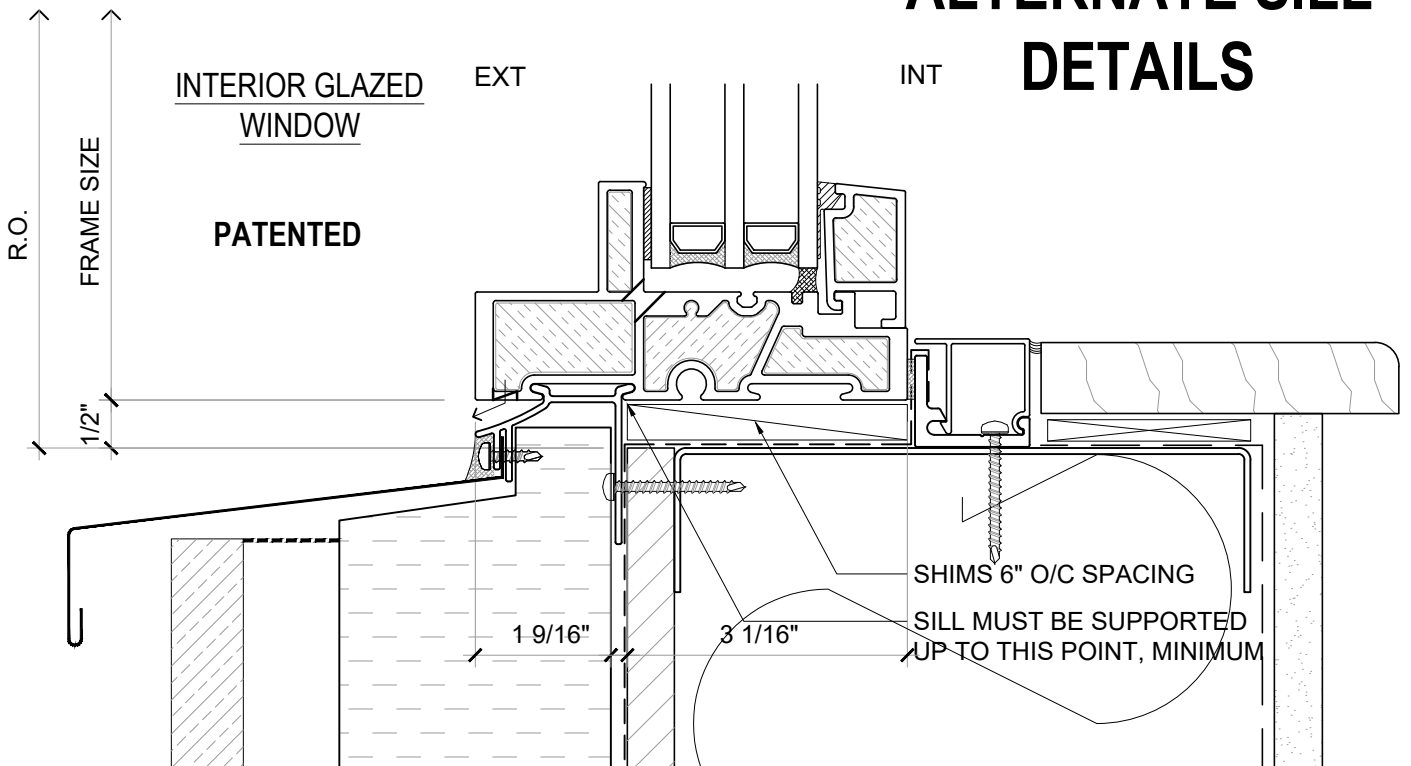
PATENTED

DATE: 27 AUGUST, 2020

DRAWN BY: CP



ALTERNATE SILL DETAILS



NOTE: THIS DRAFT DETAIL IS FOR GENERAL ARRANGEMENT PURPOSES ONLY, AND DOES NOT NECESSARILY REPRESENT A DETAIL THAT IS APPROPRIATE FOR A SPECIFIC PROJECT. PRODUCTS AND ACCESSORIES PROVIDED BY CASCADIA MUST BE CONFIRMED FOR SPECIFIC PROJECTS.

NOTE: NAIL FLANGE IS CONTINUOUS

CASCADIA WINDOWS LTD.
#101-5350 275TH STREET
LANGLEY, BC, CANADA V4W 0C1

DRAWING
TITLE:

UNIVERSAL SERIES **®** - WINDOW SILLS
REVERSED NAIL FLANGE INSTALLATION (CW-NF3)

DRAWING NO.:

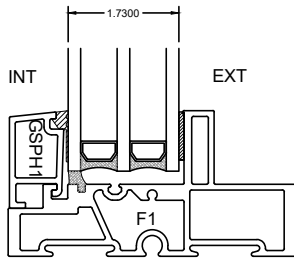
NF-1.05

SCALE: 6" = 1'-0"

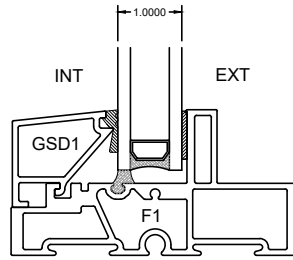
PATENTED

DATE: 27 AUGUST, 2020

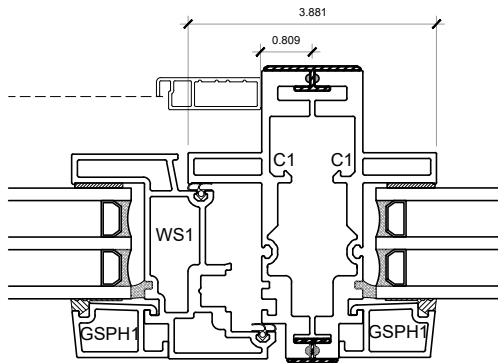
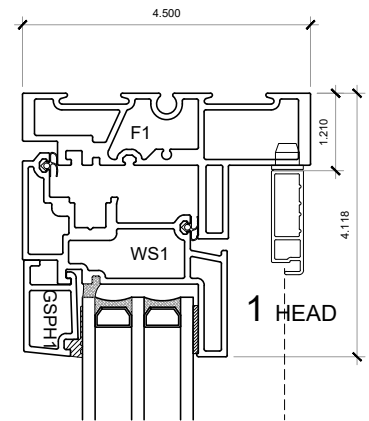
DRAWN BY: CP



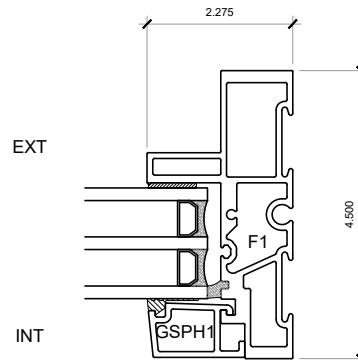
TRIPLE GLAZED
GLAZING STOP



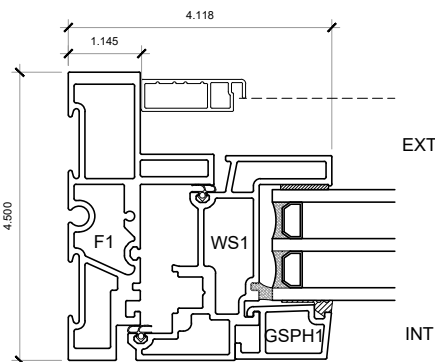
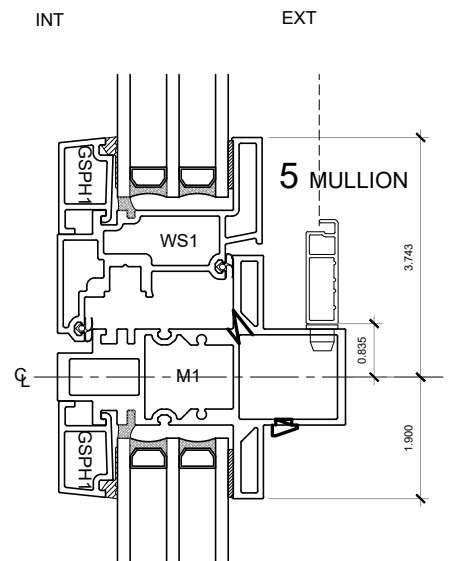
DOUBLE GLAZED
GLAZING STOP



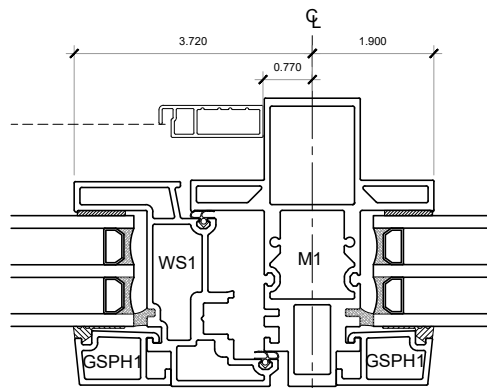
4 COUPLED MULLION



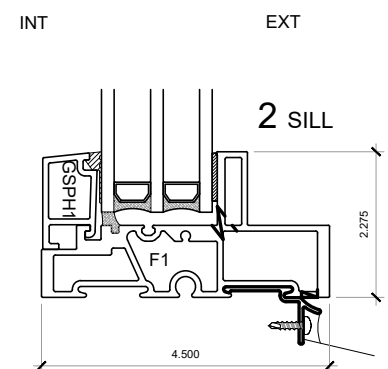
3 FIXED JAMB



6 OPERABLE JAMB



5 MULLION



NOTE: THIS DRAFT DETAIL IS FOR GENERAL ARRANGEMENT PURPOSES ONLY, AND DOES NOT NECESSARILY REPRESENT A DETAIL THAT IS APPROPRIATE FOR A SPECIFIC PROJECT. PRODUCTS AND ACCESSORIES PROVIDED BY CASCADIA MUST BE CONFIRMED FOR SPECIFIC PROJECTS.

NOTE: NAIL FLANGE IS CONTINUOUS

CASCADIA WINDOWS LTD.
#101-5350 275TH STREET
LANGLEY, BC, CANADA V4W 0C1

DRAWING
TITLE:

UNIVERSAL SERIES ® - INSWING WINDOW
PRODUCT DRAWINGS

DRAWING NO.:

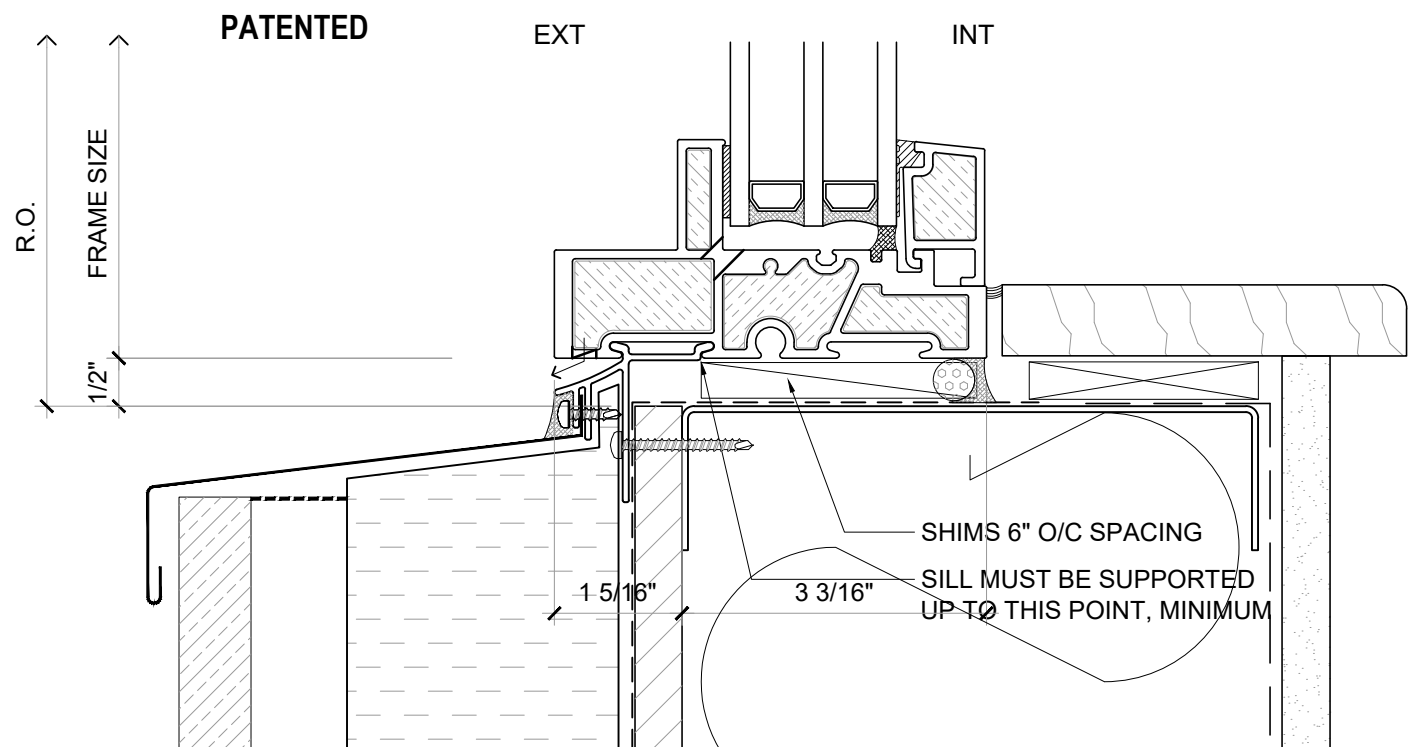
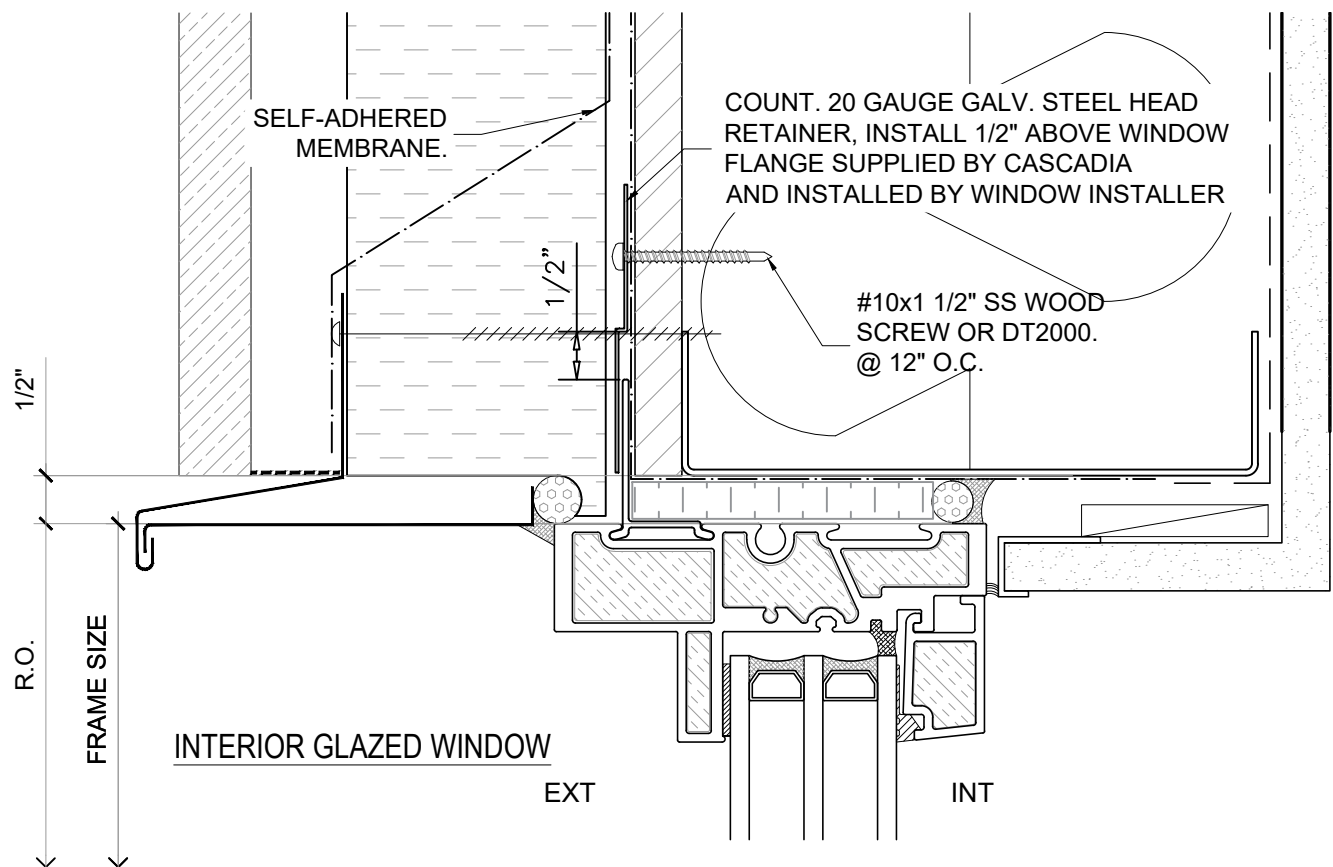
NF-2.01

SCALE: 4" = 1'-0"

PATENTED

DATE: 27 AUGUST, 2020

DRAWN BY: CP



NOTE: THIS DRAFT DETAIL IS FOR GENERAL ARRANGEMENT PURPOSES ONLY, AND DOES NOT NECESSARILY REPRESENT A DETAIL THAT IS APPROPRIATE FOR A SPECIFIC PROJECT. PRODUCTS AND ACCESSORIES PROVIDED BY CASCADIA MUST BE CONFIRMED FOR SPECIFIC PROJECTS.

NOTE: NAIL FLANGE IS CONTINUOUS

CASCADIA WINDOWS LTD.
#101-5350 275TH STREET
LANGLEY, BC, CANADA V4W 0C1

DRAWING TITLE: UNIVERSAL SERIES ® - WINDOW HEAD+SILL
STANDARD NAIL FLANGE INSTALLATION (CW-NF1)

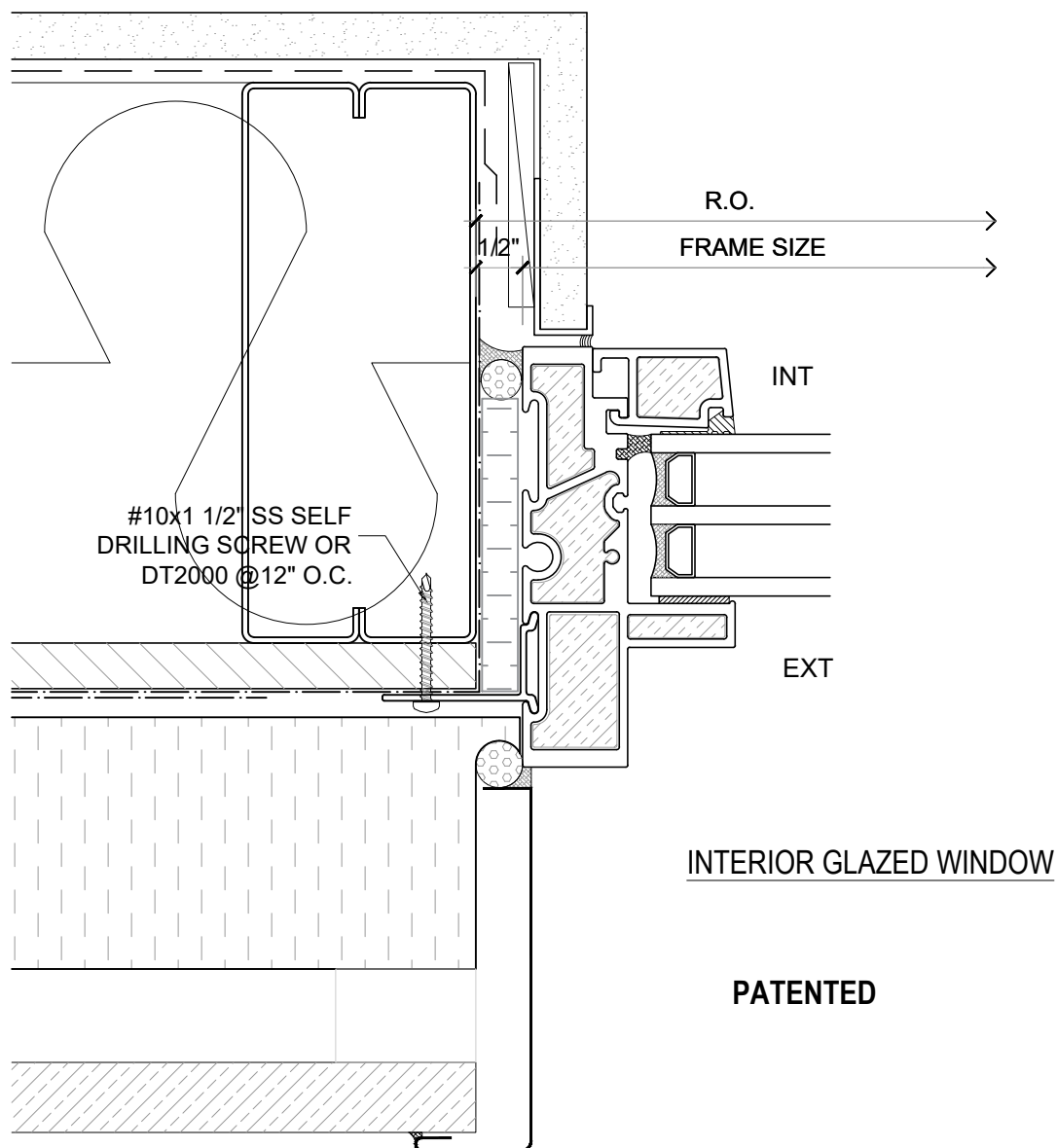
DRAWING NO.: NF-1.01

SCALE: 6" = 1'-0"

PATENTED

DATE: 24 AUGUST, 2020

DRAWN BY: CP



NOTE: THIS DRAFT DETAIL IS FOR GENERAL ARRANGEMENT PURPOSES ONLY, AND DOES NOT NECESSARILY REPRESENT A DETAIL THAT IS APPROPRIATE FOR A SPECIFIC PROJECT. PRODUCTS AND ACCESSORIES PROVIDED BY CASCADIA MUST BE CONFIRMED FOR SPECIFIC PROJECTS.

NOTE: NAIL FLANGE IS CONTINUOUS

CASCADIA WINDOWS LTD.
#101-5350 275TH STREET
LANGLEY, BC, CANADA V4W 0C1

DRAWING
TITLE:

UNIVERSAL SERIES © - WINDOW JAMB
STANDARD NAIL FLANGE INSTALLATION (CW-NF1)

DRAWING NO.:

NF-1.02

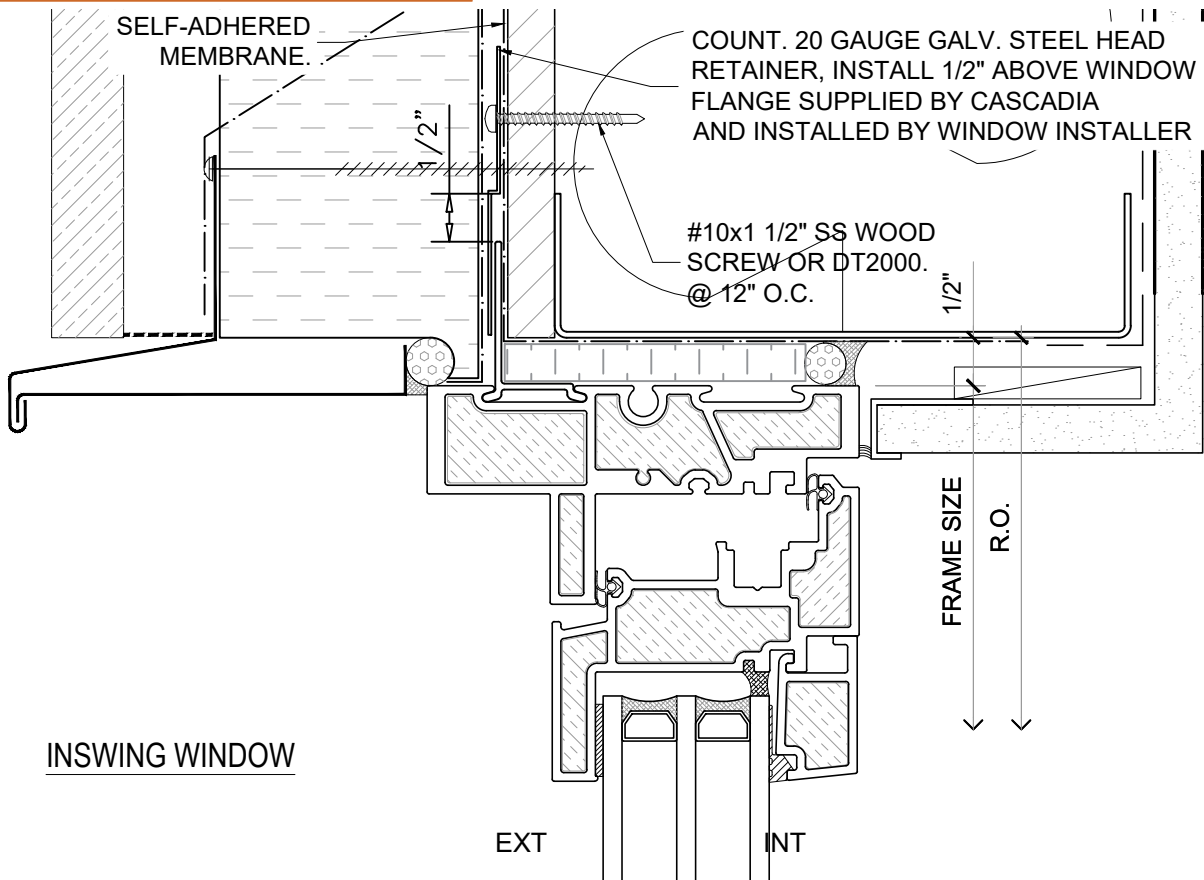
SCALE: 6" = 1'-0"

PATENTED

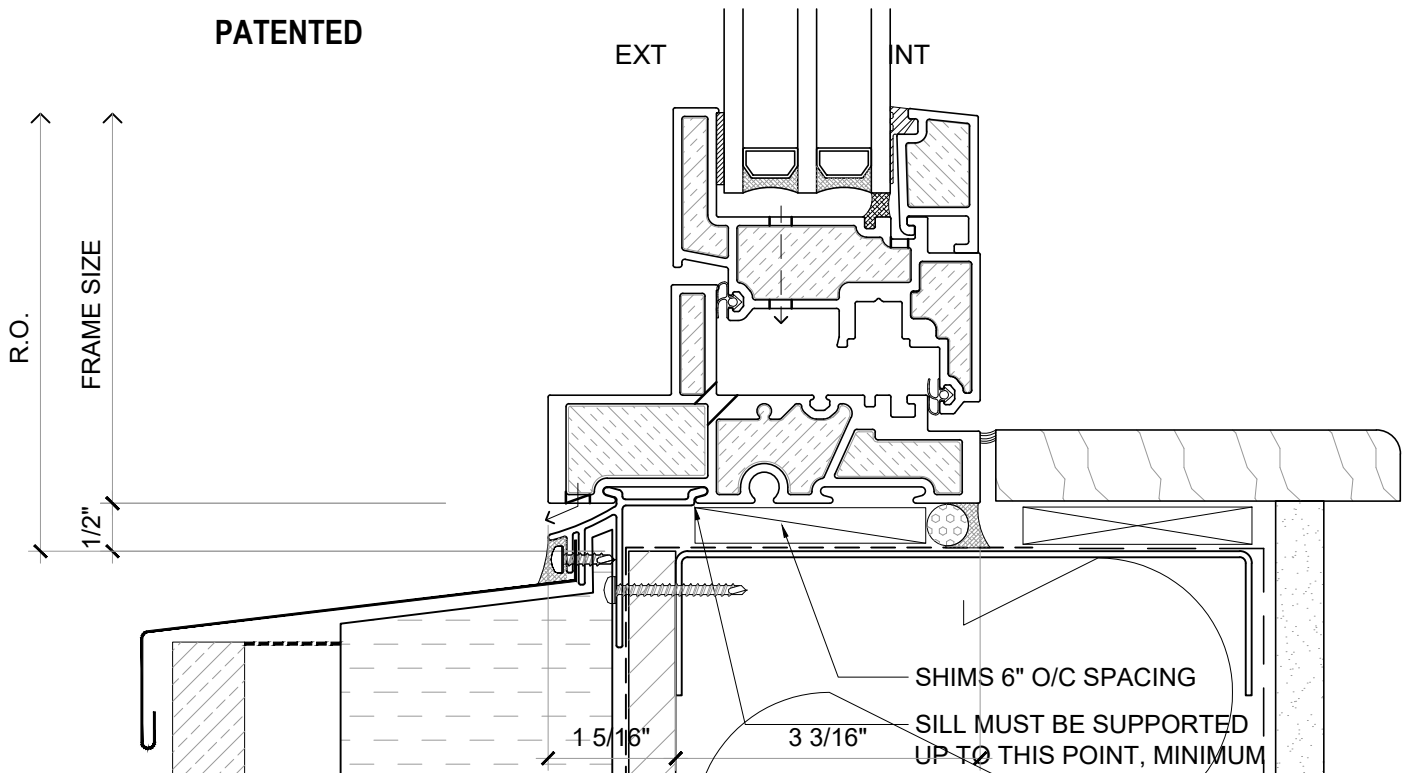
DATE: 24 AUGUST, 2020

DRAWN BY: CP

NEW: ENVIRONMENTAL PRODUCT DECLARATIONS (EPDs) NOW AVAILABLE



PATENTED



NOTE: THIS DRAFT DETAIL IS FOR GENERAL ARRANGEMENT PURPOSES ONLY, AND DOES NOT NECESSARILY REPRESENT A DETAIL THAT IS APPROPRIATE FOR A SPECIFIC PROJECT. PRODUCTS AND ACCESSORIES PROVIDED BY CASCADIA MUST BE CONFIRMED FOR SPECIFIC PROJECTS.

NOTE: NAIL FLANGE IS CONTINUOUS

CASCADIA WINDOWS LTD.
#101-5350 275TH STREET
LANGLEY, BC, CANADA V4W 0C1

DRAWING TITLE: UNIVERSAL SERIES ® - WINDOW HEAD+SILL
STANDARD NAIL FLANGE INSTALLATION (CW-NF1)

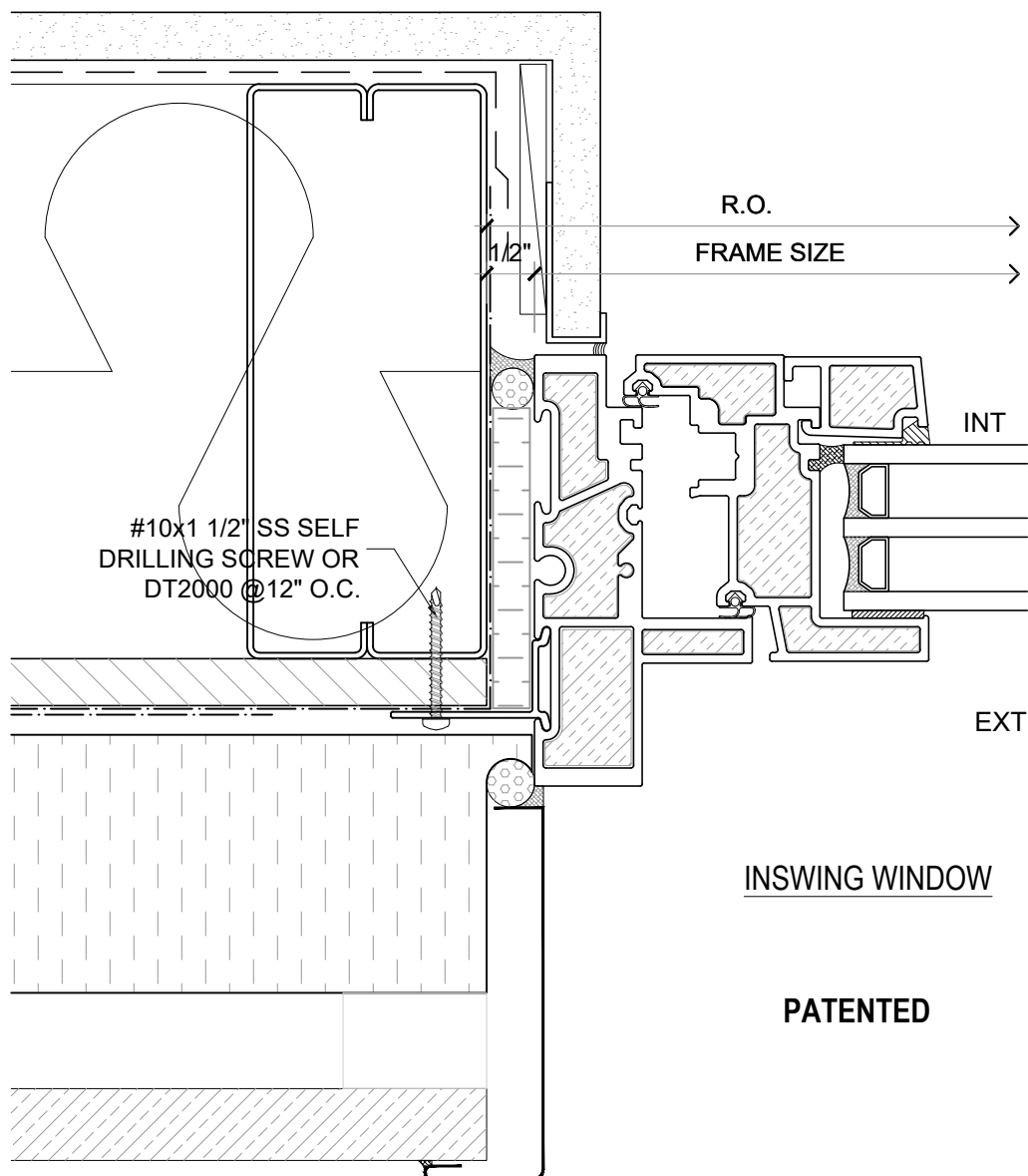
DRAWING NO.: NF-1.03

SCALE: 6" = 1'-0"

PATENTED

DATE: 24 AUGUST, 2020

DRAWN BY: CP



INSWING WINDOW

PATENTED

NOTE: THIS DRAFT DETAIL IS FOR GENERAL ARRANGEMENT PURPOSES ONLY, AND DOES NOT NECESSARILY REPRESENT A DETAIL THAT IS APPROPRIATE FOR A SPECIFIC PROJECT. PRODUCTS AND ACCESSORIES PROVIDED BY CASCADIA MUST BE CONFIRMED FOR SPECIFIC PROJECTS.

NOTE: NAIL FLANGE IS CONTINUOUS

CASCADIA WINDOWS LTD.
#101-5350 275TH STREET
LANGLEY, BC, CANADA V4W 0C1

DRAWING
TITLE:

UNIVERSAL SERIES ① - WINDOW JAMB
STANDARD NAIL FLANGE INSTALLATION (CW-NF1)

DRAWING NO.:

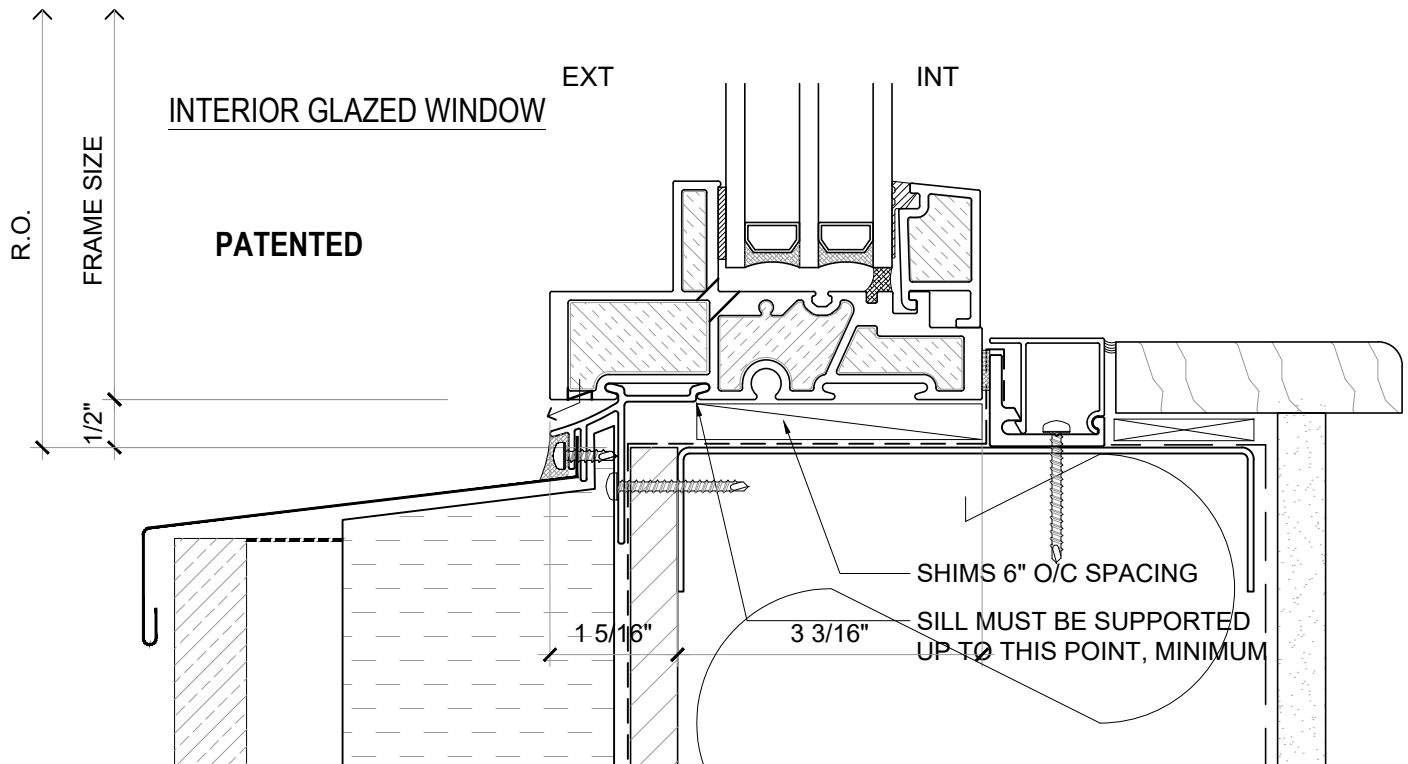
NF-1.04

SCALE: 6" = 1'-0"

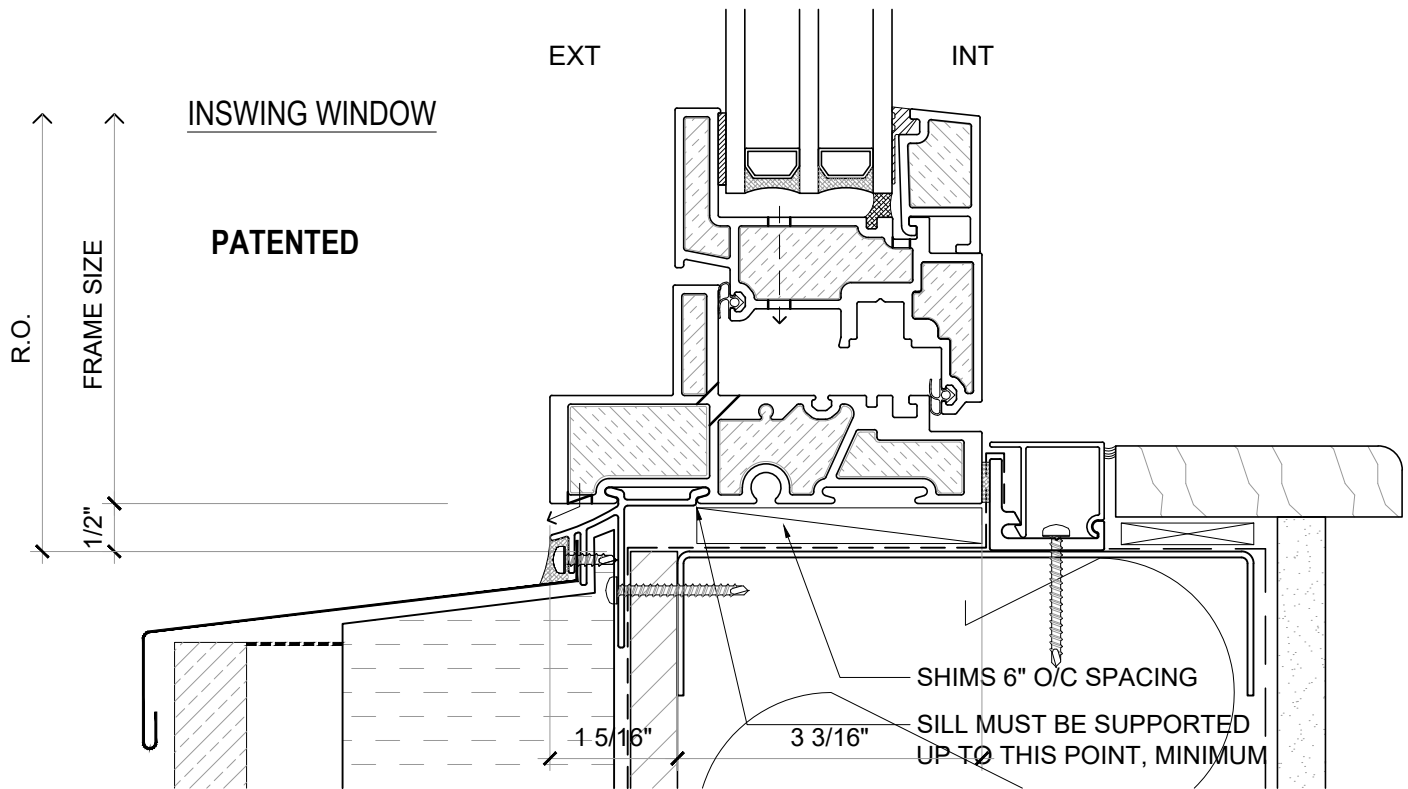
PATENTED

DATE: 24 AUGUST, 2020

DRAWN BY: CP



ALTERNATE SILL DETAILS



NOTE: THIS DRAFT DETAIL IS FOR GENERAL ARRANGEMENT PURPOSES ONLY, AND DOES NOT NECESSARILY REPRESENT A DETAIL THAT IS APPROPRIATE FOR A SPECIFIC PROJECT. PRODUCTS AND ACCESSORIES PROVIDED BY CASCADIA MUST BE CONFIRMED FOR SPECIFIC PROJECTS.

NOTE: NAIL FLANGE IS CONTINUOUS

CASCADIA WINDOWS LTD.
#101-5350 275TH STREET
LANGLEY, BC, CANADA V4W 0C1

DRAWING
TITLE:

UNIVERSAL SERIES [®] - WINDOW SILLS
STANDARD NAIL FLANGE INSTALLATION (CW-NF2) & SILL ANGLE

DRAWING NO.:

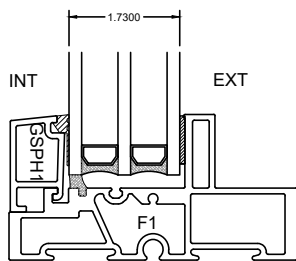
NF-1.05

SCALE: 6" = 1'-0"

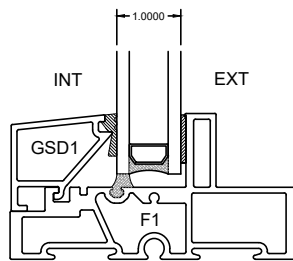
PATENTED

DATE: 24 AUGUST, 2020

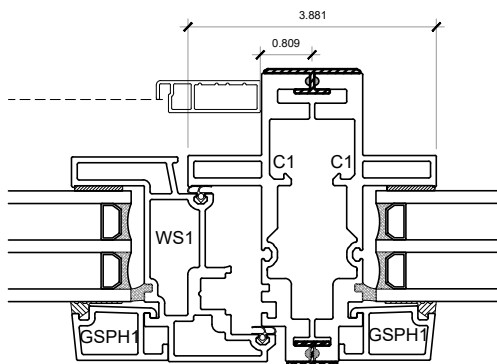
DRAWN BY: CP



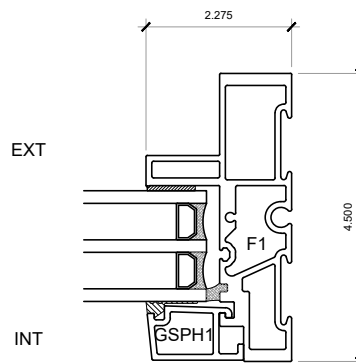
TRIPLE GLAZED
GLAZING STOP



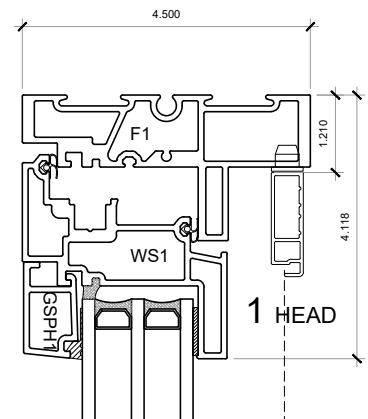
DOUBLE GLAZED
GLAZING STOP



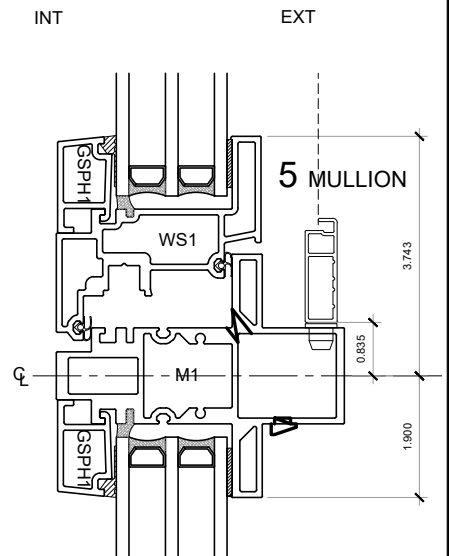
4 COUPLED MULLION



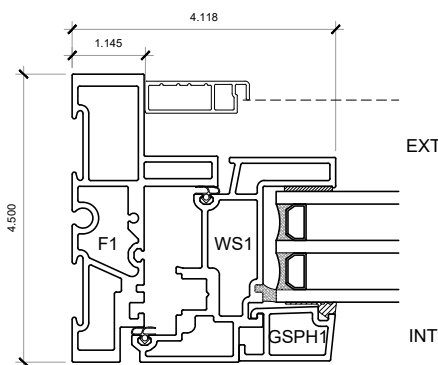
3 FIXED JAMB



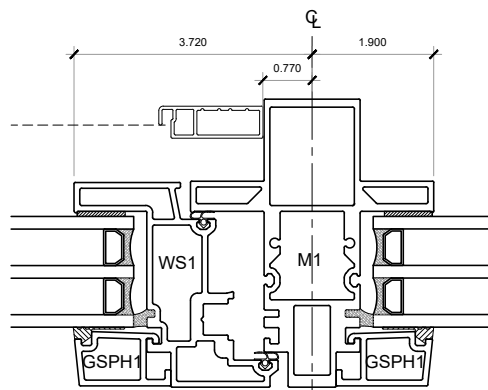
1 HEAD



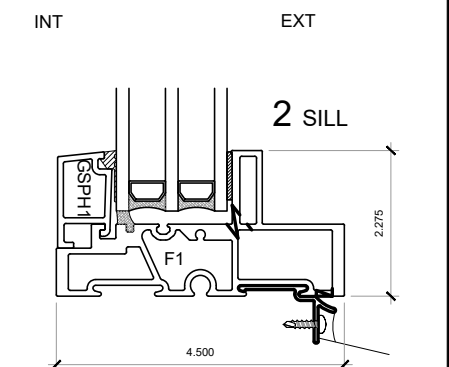
5 MULLION



6 OPERABLE JAMB



5 MULLION



2 SILL

NOTE: THIS DRAFT DETAIL IS FOR GENERAL ARRANGEMENT PURPOSES ONLY, AND DOES NOT NECESSARILY REPRESENT A DETAIL THAT IS APPROPRIATE FOR A SPECIFIC PROJECT. PRODUCTS AND ACCESSORIES PROVIDED BY CASCADIA MUST BE CONFIRMED FOR SPECIFIC PROJECTS.

NOTE: NAIL FLANGE IS CONTINUOUS

CASCADIA WINDOWS LTD.
#101-5350 275TH STREET
LANGLEY, BC, CANADA V4W 0C1

DRAWING
TITLE:

UNIVERSAL SERIES ® - INSWING WINDOW
PRODUCT DRAWING

DRAWING NO.:

NF-2.01

SCALE: 4" = 1'-0"

PATENTED

DATE: 24 AUGUST, 2020

DRAWN BY: CP