

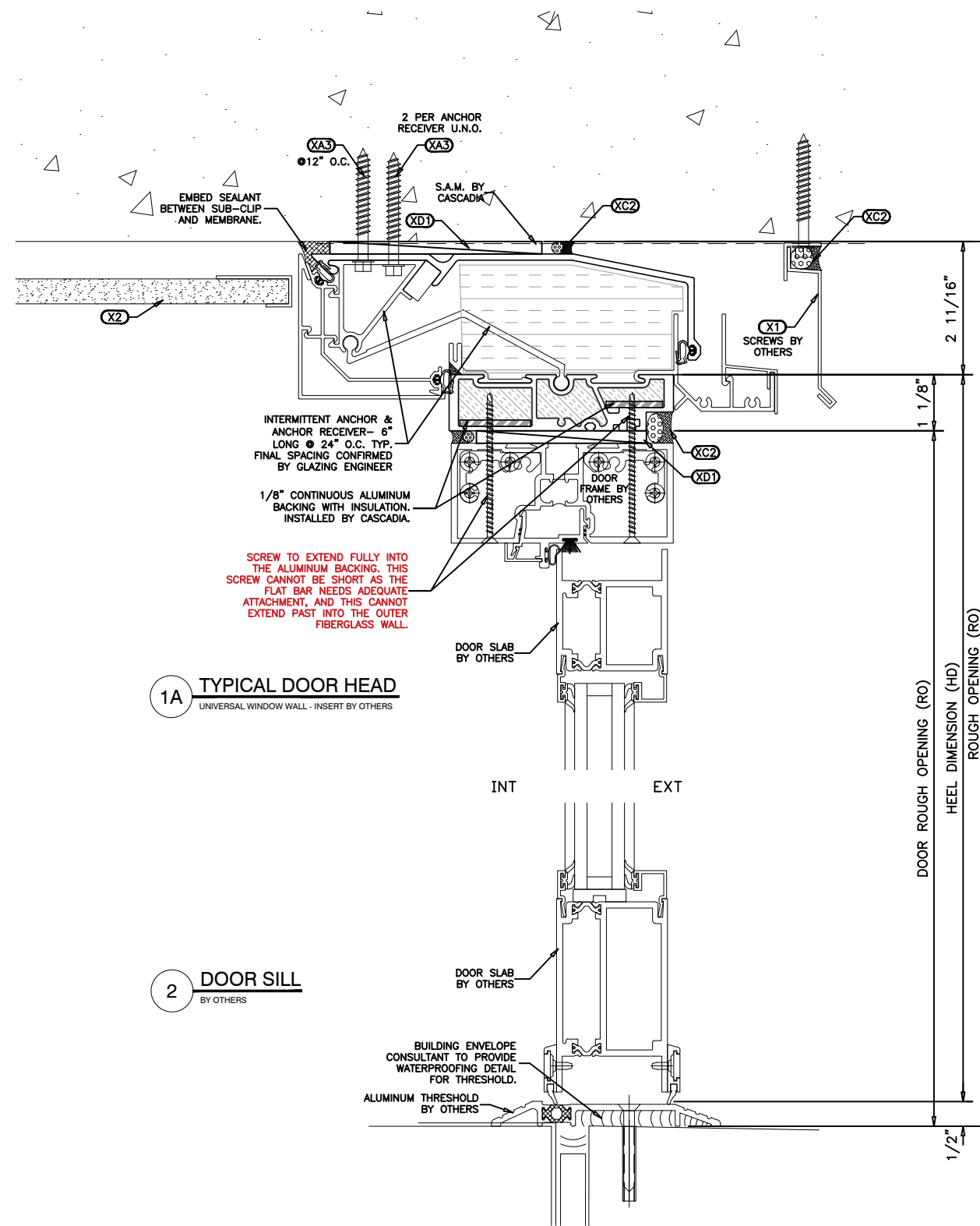


# CASCADIA WINDOWS LTD.

#101-5350 275TH STREET  
LANGLEY, BC CANADA V4W 0C1  
604-857-4600

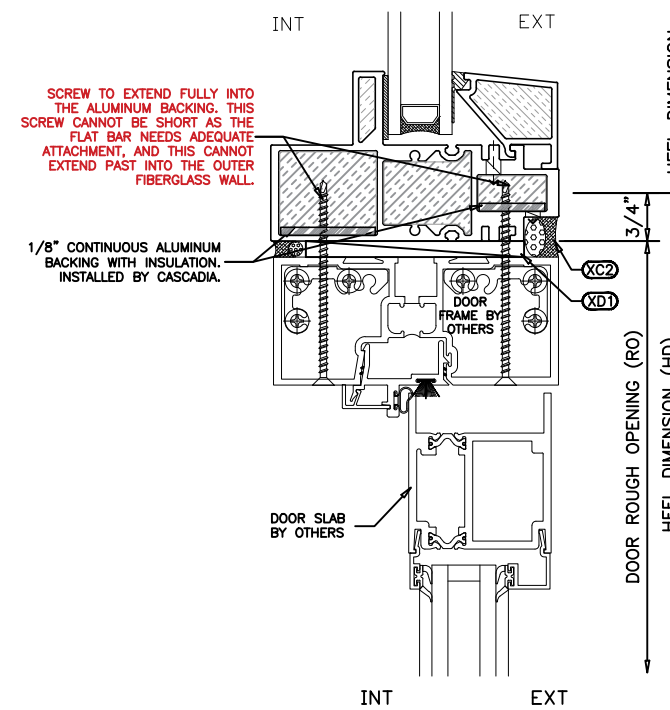
## LEGEND

- (XA1)** #10 X 1 1/2" STAINLESS STEEL SELF DRILLING SCREWS @ 6" O.C. OR AS NOTED. BY OTHERS
- (XA2)** #10 X 3/4" STAINLESS STEEL SELF DRILLING SCREWS @ 6" O.C. BY OTHERS
- (XA3)** 1/4" DIA TAPCON SCREW WITH MINIMUM 1 1/2" EMBEDMENT BY CASCADIA
- (B1)** EXTRUDED ALUMINUM UNIVERSAL ANCHOR CLIP BY CASCADIA. SPACING PER ATTACHED GUIDE.
- (B2)** CONTINUOUS ALUMINUM SILL ANGLE & COVER CAP BY CASCADIA
- (XC1)** SEALANT BEAD BETWEEN MEMBRANE AND FRAME BY OTHERS
- (XC2)** ROD & SEALANT BY OTHERS
- (XC3)** SEALANT BEAD BY OTHERS
- (XD1)** PVC SHIMS - 8" O.C. & UNDER EACH VERTICAL. BY OTHERS
- (X1)** METAL FLASHING BY OTHERS
- (X2)** INTERIOR FINISHES BY OTHERS



**1A** TYPICAL DOOR HEAD  
UNIVERSAL WINDOW WALL - INSERT BY OTHERS

**2** DOOR SILL  
BY OTHERS



**3A** DOOR HEAD @ TRANSOM  
UNIVERSAL WINDOW WALL - INSERT BY OTHERS

**NOTES:**

- DETAILS ARE FOR STRUCTURAL INSTALLATION PURPOSES ONLY. ALL OTHER DETAILS ARE TO BE REFERENCED TO THE ARCHITECTURAL DRAWINGS AND ENVELOPE DETAILS. CASCADIA WINDOWS & DOORS NEITHER APPROVES NOR DISAPPROVES THE ENVELOPE DETAILS OR STRUCTURE OF THE BUILDING.
- INSTALLERS TO ENSURE THAT WINDOWS & DOORS ARE INSTALLED LEVEL, PLUMB & SQUARE WITH ALL APPROPRIATE FASTENING & SHIMMING.
- REFER TO BUILDING ENVELOPE DETAILS FOR MEMBRANING, SEQUENCING, FINISHING & SEALING INSTRUCTIONS.
- BACKER RODS BEHIND SEALANT BEADS IN GLAZING POCKET ARE A DISCRETIONARY COMPONENT AND ARE REQUIRED ONLY WHEN GAP BETWEEN GLASS AND WINDOW FRAME EXCEEDS APPROXIMATELY 1/8".
- SEE ADDITIONAL COUPLING INSTRUCTIONS WHEN COUPLING IS REQUIRED.

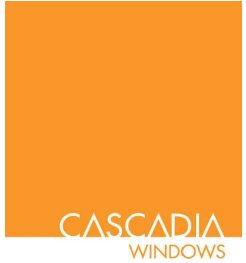
## PROJECT TITLE: WINDOW WALL ALUMINUM DOOR INSERTS

ISSUE	DESCRIPTION	DATE
1	1ST SUBMITTAL	FEB. 12/21

## DRAWING TITLE: INSTALLATION DETAILS

SCALE: N.T.S.  
DATE: FEB. 12/2021  
DRAWN BY: AP  
PROJECT #: XXXX

DRAWING NO.:  
**5.1**

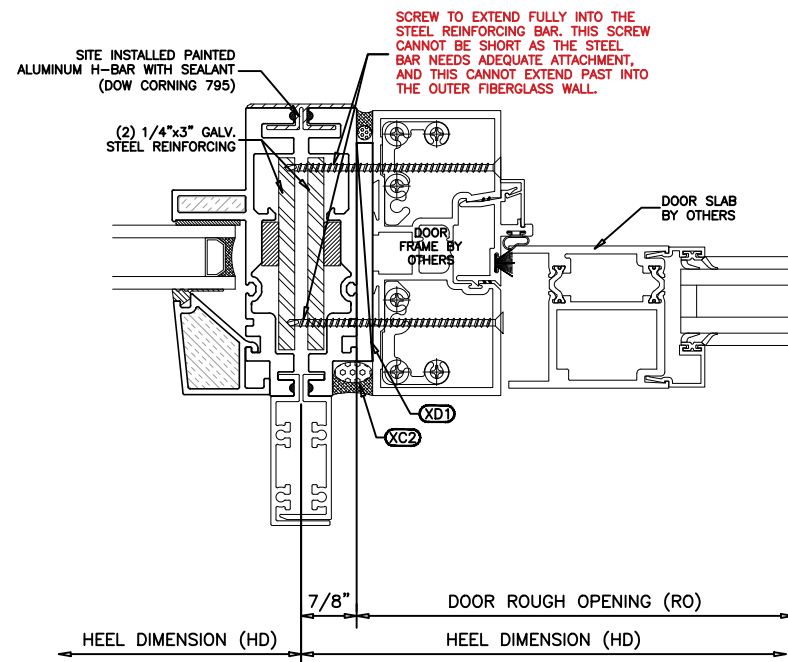


# CASCADIA WINDOWS LTD.

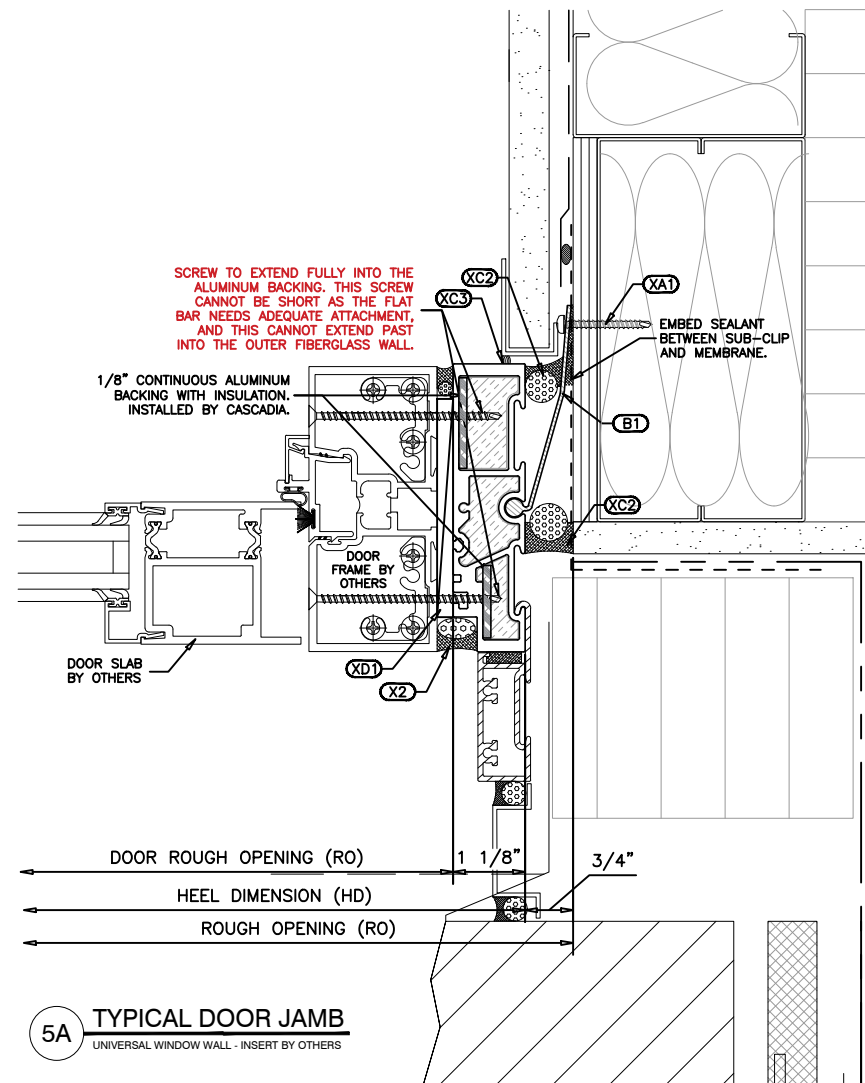
#101-5350 275TH STREET  
LANGLEY, BC CANADA V4W 0C1  
604-857-4600

## LEGEND

- (XA1) #10 X 1 1/2" STAINLESS STEEL SELF DRILLING SCREWS @ 6" O.C. OR AS NOTED. BY OTHERS
- (XA2) #10 X 3/4" STAINLESS STEEL SELF DRILLING SCREWS @ 6" O.C. BY OTHERS
- (XA3) 1/4" DIA TAPCON SCREW WITH MINIMUM 1 1/2" EMBEDMENT BY CASCADIA
- (B1) EXTRUDED ALUMINUM UNIVERSAL ANCHOR CLIP BY CASCADIA. SPACING PER ATTACHED GUIDE.
- (B2) CONTINUOUS ALUMINUM SILL ANGLE & COVER CAP BY CASCADIA
- (XC1) SEALANT BEAD BETWEEN MEMBRANE AND FRAME BY OTHERS
- (XC2) ROD & SEALANT BY OTHERS
- (XC3) SEALANT BEAD BY OTHERS
- (XD1) PVC SHIMS - 8" O.C. & UNDER EACH VERTICAL. BY OTHERS
- (X1) METAL FLASHING BY OTHERS
- (X2) INTERIOR FINISHES BY OTHERS



**4A TYPICAL DOOR COUPLER**  
UNIVERSAL WINDOW WALL - INSERT BY OTHERS



**5A TYPICAL DOOR JAMB**  
UNIVERSAL WINDOW WALL - INSERT BY OTHERS

**NOTES:**

- DETAILS ARE FOR STRUCTURAL INSTALLATION PURPOSES ONLY. ALL OTHER DETAILS ARE TO BE REFERENCED TO THE ARCHITECTURAL DRAWINGS AND ENVELOPE DETAILS. CASCADIA WINDOWS & DOORS NEITHER APPROVES NOR DISAPPROVES THE ENVELOPE DETAILS OR STRUCTURE OF THE BUILDING.
- INSTALLERS TO ENSURE THAT WINDOWS & DOORS ARE INSTALLED LEVEL, PLUMB & SQUARE WITH ALL APPROPRIATE FASTENING & SHIMMING.
- REFER TO BUILDING ENVELOPE DETAILS FOR MEMBRANING, SEQUENCING, FINISHING & SEALING INSTRUCTIONS.
- BACKER RODS BEHIND SEALANT BEADS IN GLAZING POCKET ARE A DISCRETIONARY COMPONENT AND ARE REQUIRED ONLY WHEN GAP BETWEEN GLASS AND WINDOW FRAME EXCEEDS APPROXIMATELY 1/8".
- SEE ADDITIONAL COUPLING INSTRUCTIONS WHEN COUPLING IS REQUIRED.

PROJECT TITLE:  
**WINDOW WALL  
ALUMINUM  
DOOR INSERTS**

ISSUE	DESCRIPTION	DATE
1	1ST SUBMITTAL	FEB.12/21

DRAWING TITLE:  
**INSTALLATION  
DETAILS**

SCALE: N.T.S.	DRAWING NO.:
DATE: FEB. 12/2021	5.2
DRAWN BY: AP	
PROJECT #: XXXX	