

CASCADIA CLIP - VERTICAL APPLICATIONS

Z-GIRTS

1. OPTIMIZE SPACING

Before you start, check out Cascadia's online clip calculator to optimize thermal and structural performance, clip spacing and clip quantities.



2. PREPARE THE BACKUP WALL

Prepare the backup wall according to project drawings.

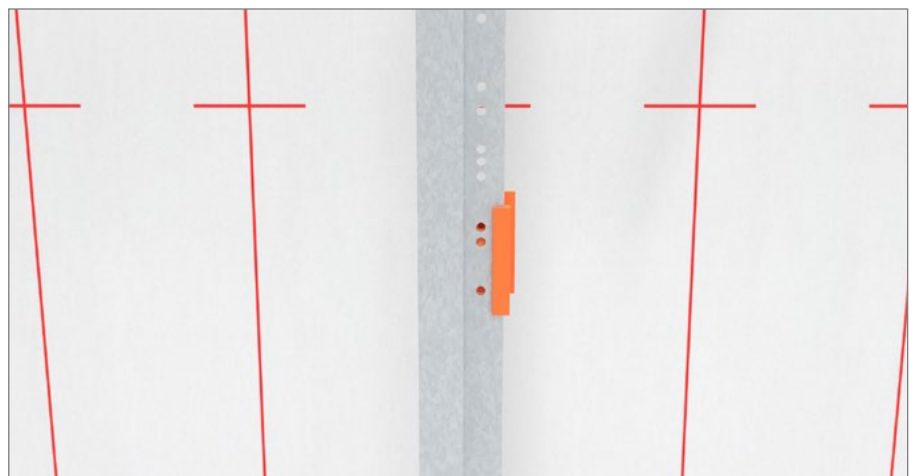
Mark stud locations.

Mark vertical spacing of z-girts as dictated by the cladding engineer shop drawings, project drawings or Cascadia's online clip calculator.



3. START A Z-GIRT ROW

Snap the clips on to the z-girts, aligning them with the pre-punched holes that match the project's vertical spacing requirements.



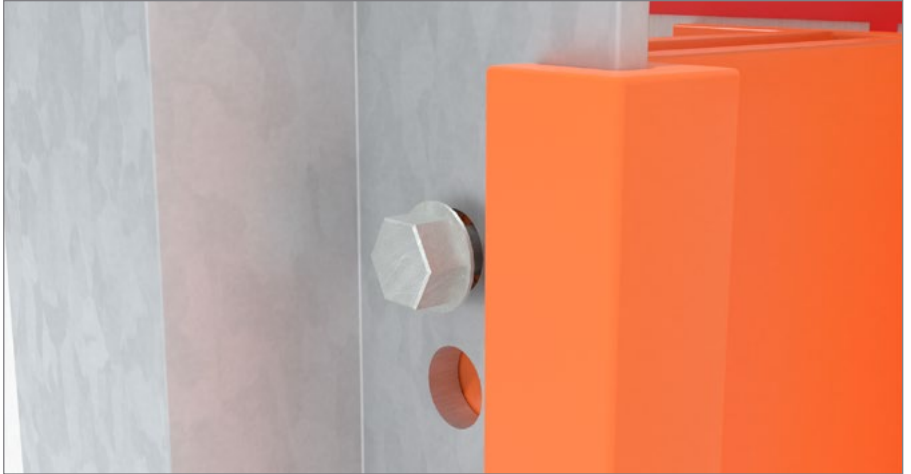
CASCADIA CLIP - VERTICAL APPLICATIONS Z-GIRTS

4. START A Z-GIRT ROW

Select a clip mid-way along the z-girt and secure to the backup wall using a single fastener.

Leave a small gap between the fastener head and the z-girt to accommodate adjustments.

It's important to leave fasteners 'loose' if adjustments may be needed. Backing out and re-tightening fasteners may compromise screw pull out capacity.

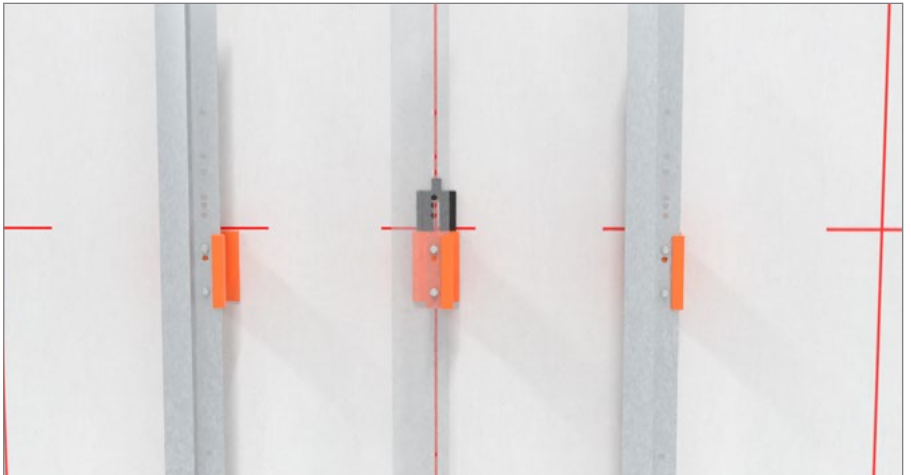


5. CHECK Z-GIRT FOR PLUMB

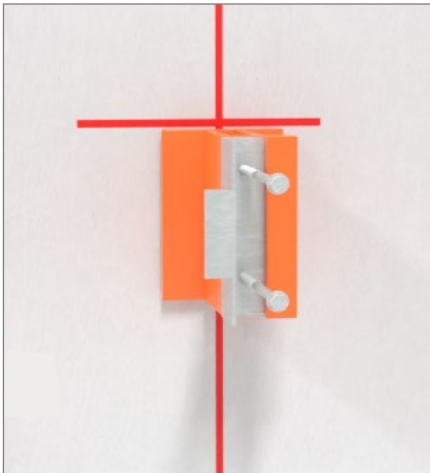
Move along the z-girt, fastening each clip, ensuring the z-girt is plumb.

Where needed, use a Cascadia Shim to adjust the hat-track to achieve plumb.

Cascadia Shims are available in 1/8" and 1/4" depths.



If more than 1/4" adjustment is needed, use an adjustment bracket to create plumb.



CASCADIA CLIP - VERTICAL APPLICATIONS

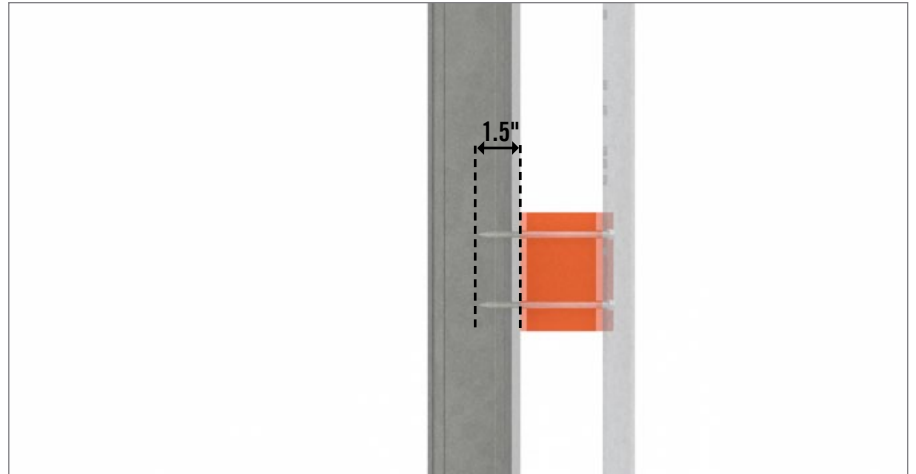
Z-GIRTS

6. SECURE FASTENERS

Finish securing fasteners tight to the z-girt.

Ensure both fasteners penetrate the backup wall to the stud.

Fasteners must be at least 1.5" longer than the clip.



7. INSTALL INSULATION

SEMI-RIGID INSULATION

Install insulation retention system in accordance with manufacturer's instructions.

Fit insulation between z-girts, ensuring a tight fit. Cut a small relief cut in the side of the insulation to accommodate the clip.

Repeat the process across the remainder of the wall.



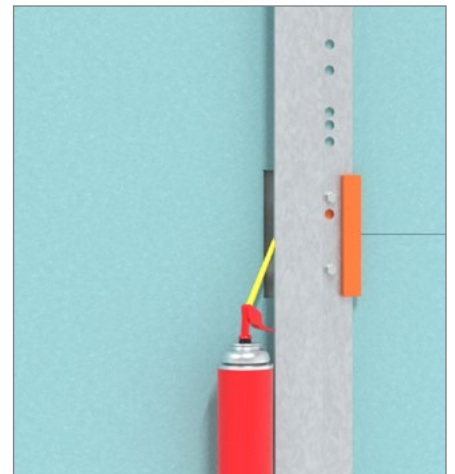
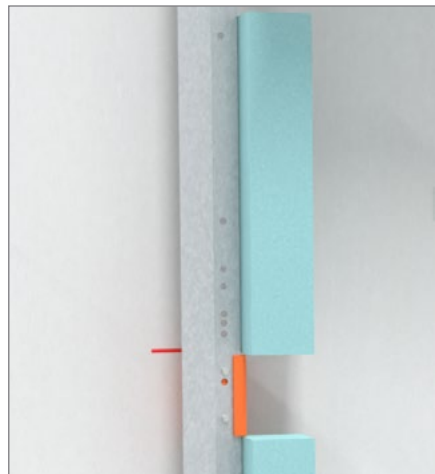
RIGID INSULATION

Install insulation retention system in accordance with manufacturer's instructions.

Cut strips of rigid insulation and fit behind the z-girt.

Fit insulation between z-girts, ensuring a tight fit. Fill any gaps around the clips with spray foam.

Repeat the process across the remainder of the wall.



CASCADIA CLIP - VERTICAL APPLICATIONS

Z-GIRTS

8. INSTALL INSULATION

Proceed with cladding installation in accordance with shop drawings and manufacturer's instructions.

