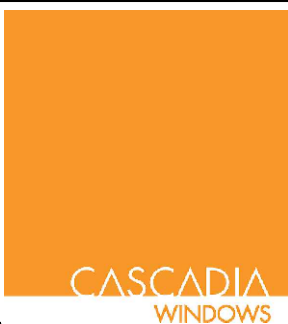


NOTE: THIS DETAIL IS FOR GENERAL ARRANGEMENT PURPOSES ONLY, AND DOES NOT NECESSARILY REPRESENT A DETAIL THAT IS APPROPRIATE FOR A SPECIFIC PROJECT. PRODUCTS AND ACCESSORIES PROVIDED BY CASCADIA MUST BE CONFIRMED FOR SPECIFIC PROJECTS.

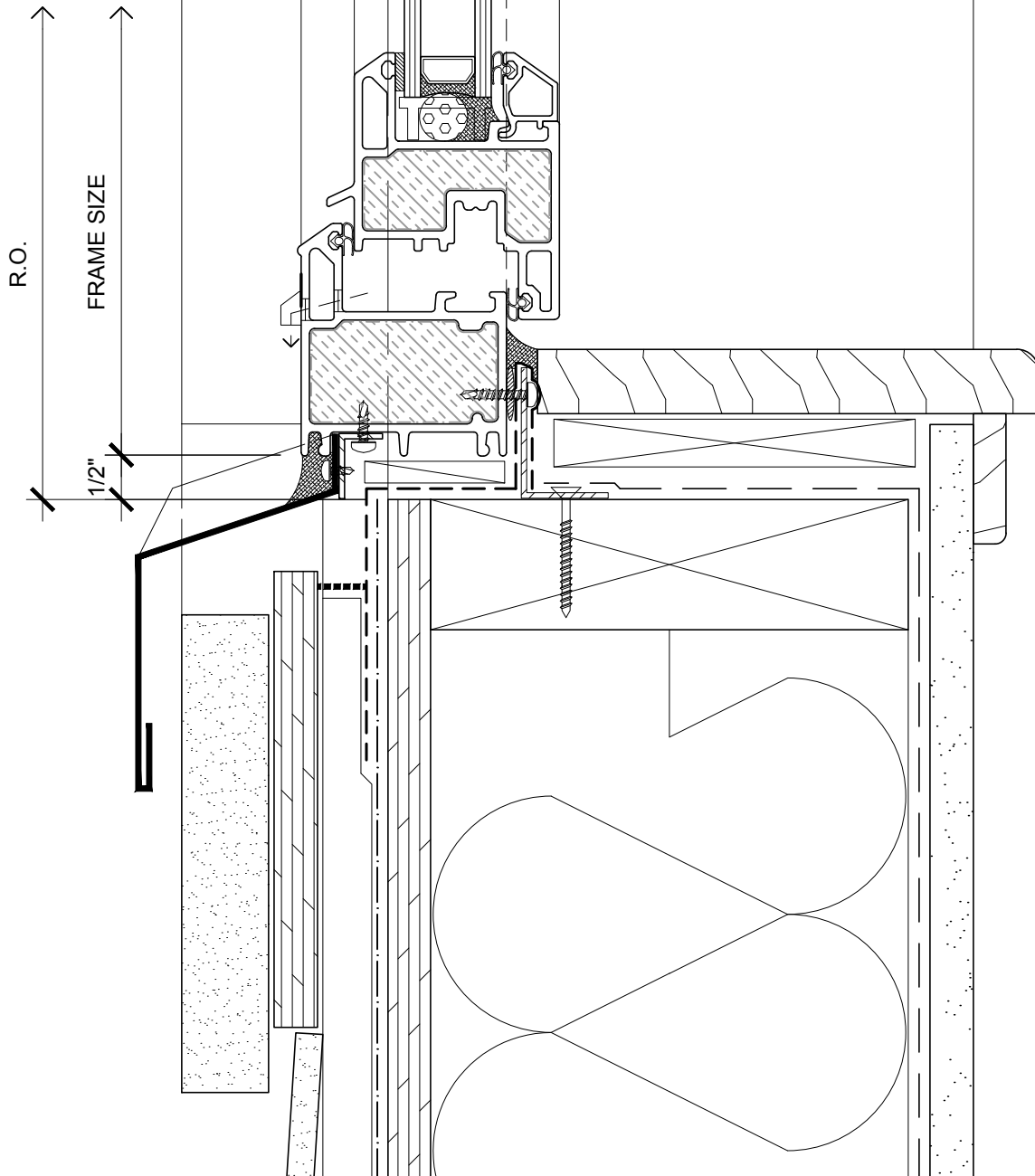
SECTION

NOTE: SUB-CLIPS AND ANCHOR CLIPS AT HEAD AND JAMBS ARE INTERMITTENT



CASCADIA WINDOWS LTD.
2460 CLUESIER WAY
LANGLEY, BC CANADA V4W 3Y5

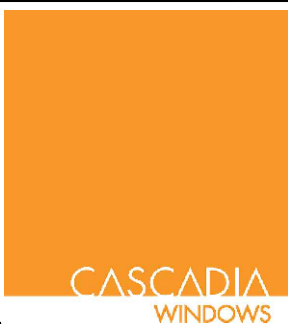
SERIES: SERIES 300 INSWING WINDOW (DUAL ACTION) WITH CLIPS [CL] AND INTERIOR SILL ANGLE - FLUSH INSTALLATION		DRAWING NO.: 300CL(C)-1.01	
DRAWING TITLE: TYPICAL WINDOW HEAD RAINSCREEN WALL ASSEMBLY, CEMENT BOARD CLADDING (C)		PROJECT NO.:	
ISSUE	DESCRIPTION	DATE	SCALE: 6" = 1'-0"
			DATE:
			DRAWN BY:
			CHECKED BY:



NOTE: THIS DETAIL IS FOR GENERAL ARRANGEMENT PURPOSES ONLY, AND DOES NOT NECESSARILY REPRESENT A DETAIL THAT IS APPROPRIATE FOR A SPECIFIC PROJECT. PRODUCTS AND ACCESSORIES PROVIDED BY CASCADIA MUST BE CONFIRMED FOR SPECIFIC PROJECTS.

SECTION

NOTE: PROVIDE WATERPROOF SUB-SILL WITH POSITIVE DRAINAGE TO EXTERIOR



CASCADIA WINDOWS LTD.
2160 CLUESIER WAY
LANGLEY, BC CANADA V4W 3Y5

SERIES: **SERIES 300 INSWING WINDOW (DUAL ACTION)
WITH CLIPS [CL] AND INTERIOR SILL ANGLE - FLUSH INSTALLATION**

DRAWING NO.:
300CL(C)-1.02

DRAWING TITLE:
**TYPICAL WINDOW SILL
RAINSCREEN WALL ASSEMBLY, CEMENT BOARD CLADDING (C)**

PROJECT NO.:

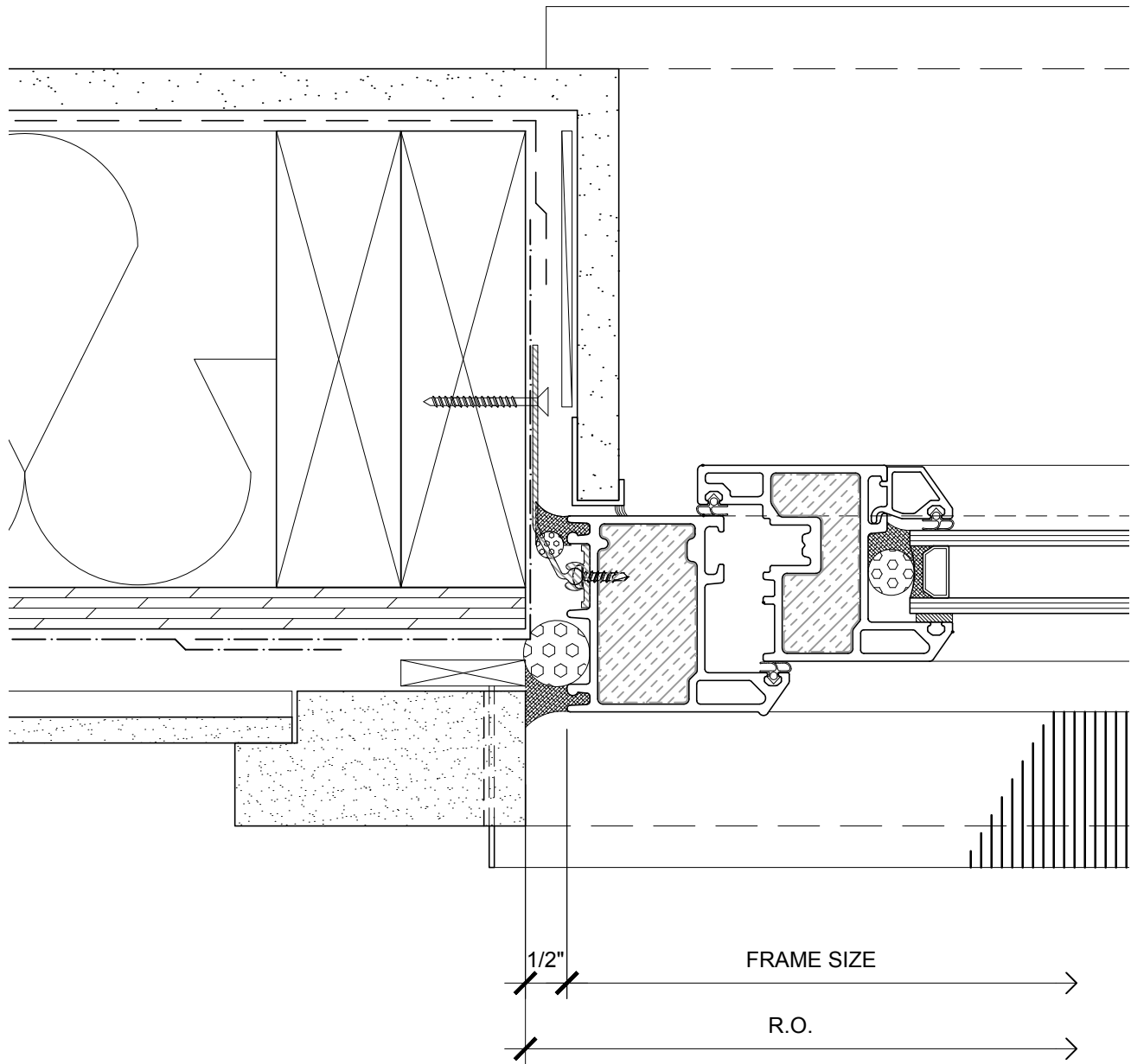
ISSUE	DESCRIPTION	DATE

SCALE: 6" = 1'-0"

DATE:

DRAWN BY:

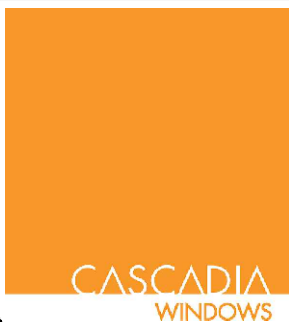
CHECKED BY:



NOTE: THIS DETAIL IS FOR GENERAL ARRANGEMENT PURPOSES ONLY, AND DOES NOT NECESSARILY REPRESENT A DETAIL THAT IS APPROPRIATE FOR A SPECIFIC PROJECT. PRODUCTS AND ACCESSORIES PROVIDED BY CASCADIA MUST BE CONFIRMED FOR SPECIFIC PROJECTS.

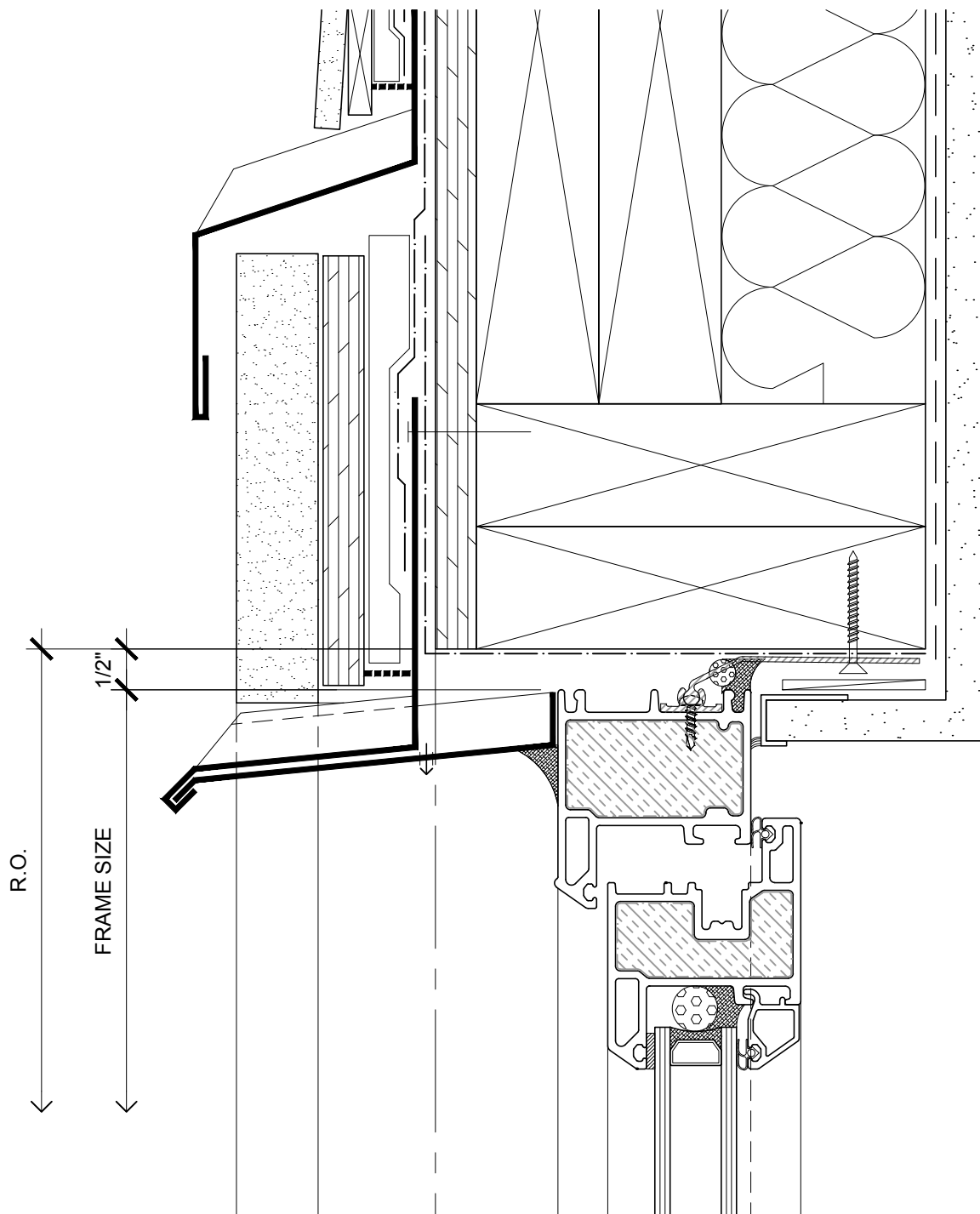
PLAN

NOTE: INSECT SCREENS, BRICK MOULD TRIM AND FRAME EXTENDER TRIM AVAILABLE



CASCADIA WINDOWS LTD.
2480 CLUESIER WAY
LANGLEY, BC CANADA V4W 3Y5

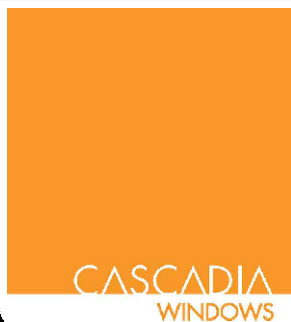
SERIES: SERIES 300 INSWING WINDOW (DUAL ACTION) WITH CLIPS [CL] AND INTERIOR SILL ANGLE - FLUSH INSTALLATION			DRAWING NO.: 300CL(C)-1.03
DRAWING TITLE: TYPICAL WINDOW JAMB RAINSCREEN WALL ASSEMBLY, CEMENT BOARD CLADDING (C)			PROJECT NO.:
ISSUE	DESCRIPTION	DATE	SCALE: 6" = 1'-0"
			DATE:
			DRAWN BY:
			CHECKED BY:



NOTE: THIS DETAIL IS FOR GENERAL ARRANGEMENT PURPOSES ONLY, AND DOES NOT NECESSARILY REPRESENT A DETAIL THAT IS APPROPRIATE FOR A SPECIFIC PROJECT. PRODUCTS AND ACCESSORIES PROVIDED BY CASCADIA MUST BE CONFIRMED FOR SPECIFIC PROJECTS.

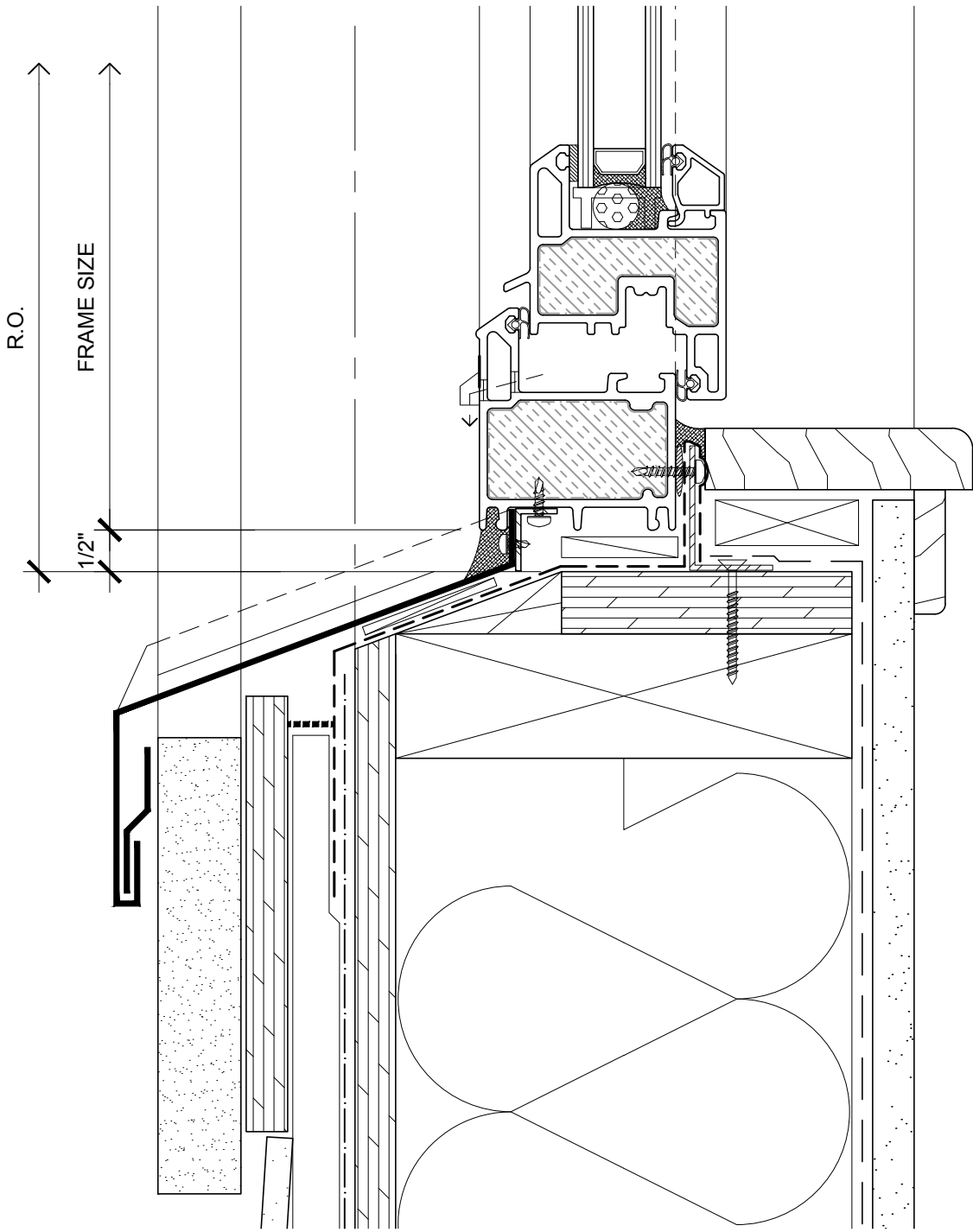
SECTION

NOTE: SUB-CLIPS AND ANCHOR CLIPS AT HEAD AND JAMBS ARE INTERMITTENT



CASCADIA WINDOWS LTD.
 2460 CLUESIER WAY
 LANGLEY, BC CANADA V4W 3Y5

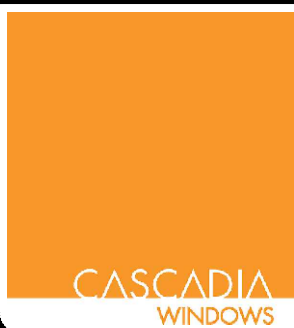
SERIES: SERIES 300 INSWING WINDOW (DUAL ACTION) WITH CLIPS [CL] AND INTERIOR SILL ANGLE - RECESSED INSTALLATION		DRAWING NO.: 300CL(C)-1.04	
DRAWING TITLE: TYPICAL WINDOW HEAD RAINSCREEN WALL ASSEMBLY, CEMENT BOARD CLADDING (C)		PROJECT NO.:	
ISSUE	DESCRIPTION	DATE	SCALE: 6" = 1'-0"
			DATE:
			DRAWN BY:
			CHECKED BY:



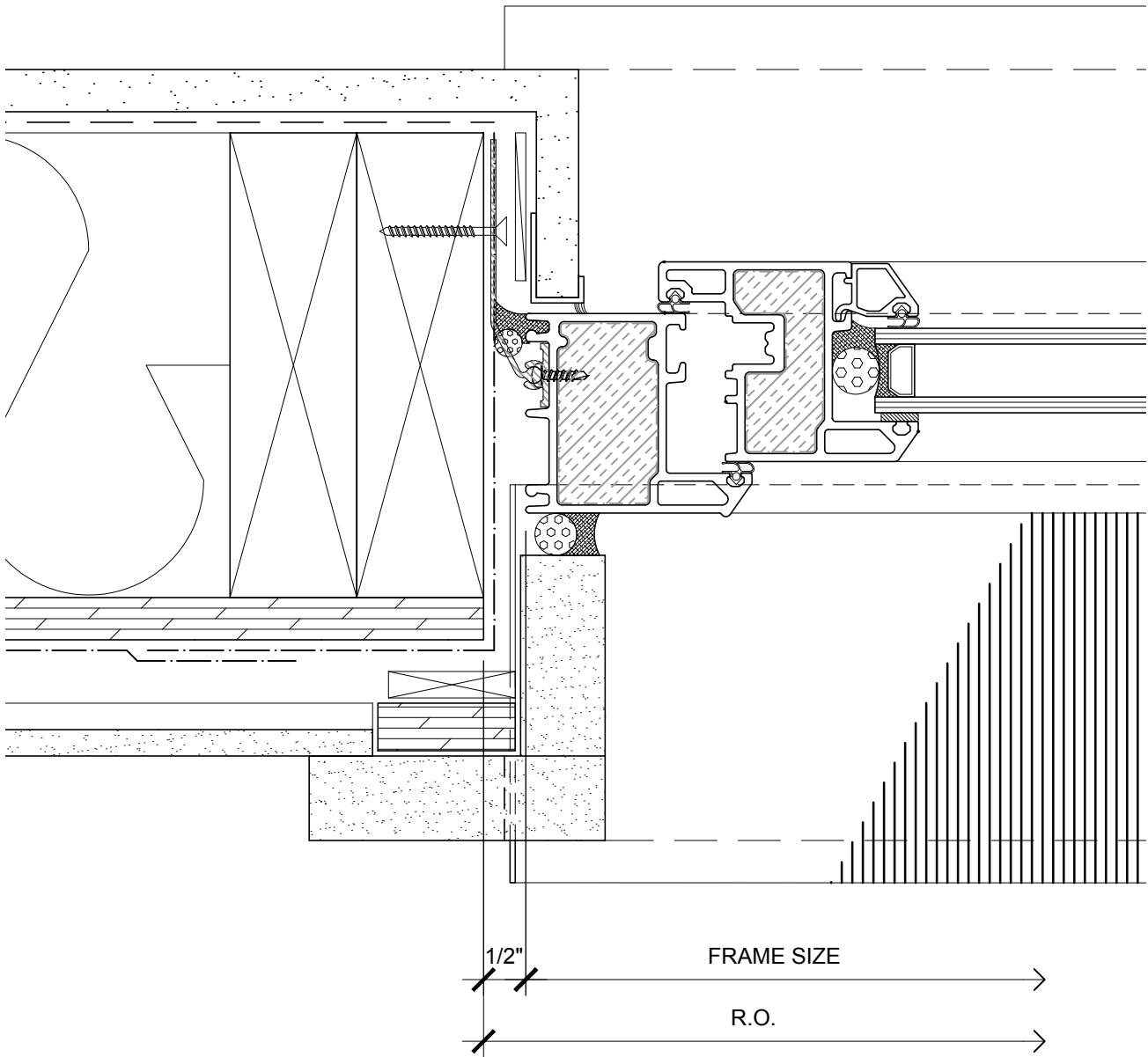
NOTE: THIS DETAIL IS FOR GENERAL ARRANGEMENT PURPOSES ONLY, AND DOES NOT NECESSARILY REPRESENT A DETAIL THAT IS APPROPRIATE FOR A SPECIFIC PROJECT. PRODUCTS AND ACCESSORIES PROVIDED BY CASCADIA MUST BE CONFIRMED FOR SPECIFIC PROJECTS.

SECTION

NOTE: PROVIDE WATERPROOF SUB-SILL WITH POSITIVE DRAINAGE TO EXTERIOR



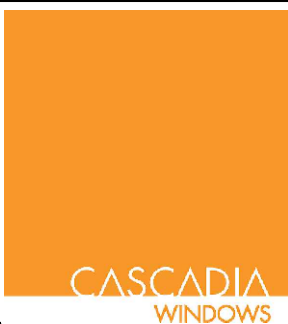
SERIES: SERIES 300 INSWING WINDOW (DUAL ACTION) WITH CLIPS [CL] AND INTERIOR SILL ANGLE - RECESSED INSTALLATION		DRAWING NO.: 300CL(C)-1.05	
DRAWING TITLE: TYPICAL WINDOW SILL RAINSCREEN WALL ASSEMBLY, CEMENT BOARD CLADDING (C)		PROJECT NO.:	
ISSUE	DESCRIPTION	DATE	SCALE: 6" = 1'-0"
			DATE:
			DRAWN BY:
			CHECKED BY:



NOTE: THIS DETAIL IS FOR GENERAL ARRANGEMENT PURPOSES ONLY, AND DOES NOT NECESSARILY REPRESENT A DETAIL THAT IS APPROPRIATE FOR A SPECIFIC PROJECT. PRODUCTS AND ACCESSORIES PROVIDED BY CASCADIA MUST BE CONFIRMED FOR SPECIFIC PROJECTS.

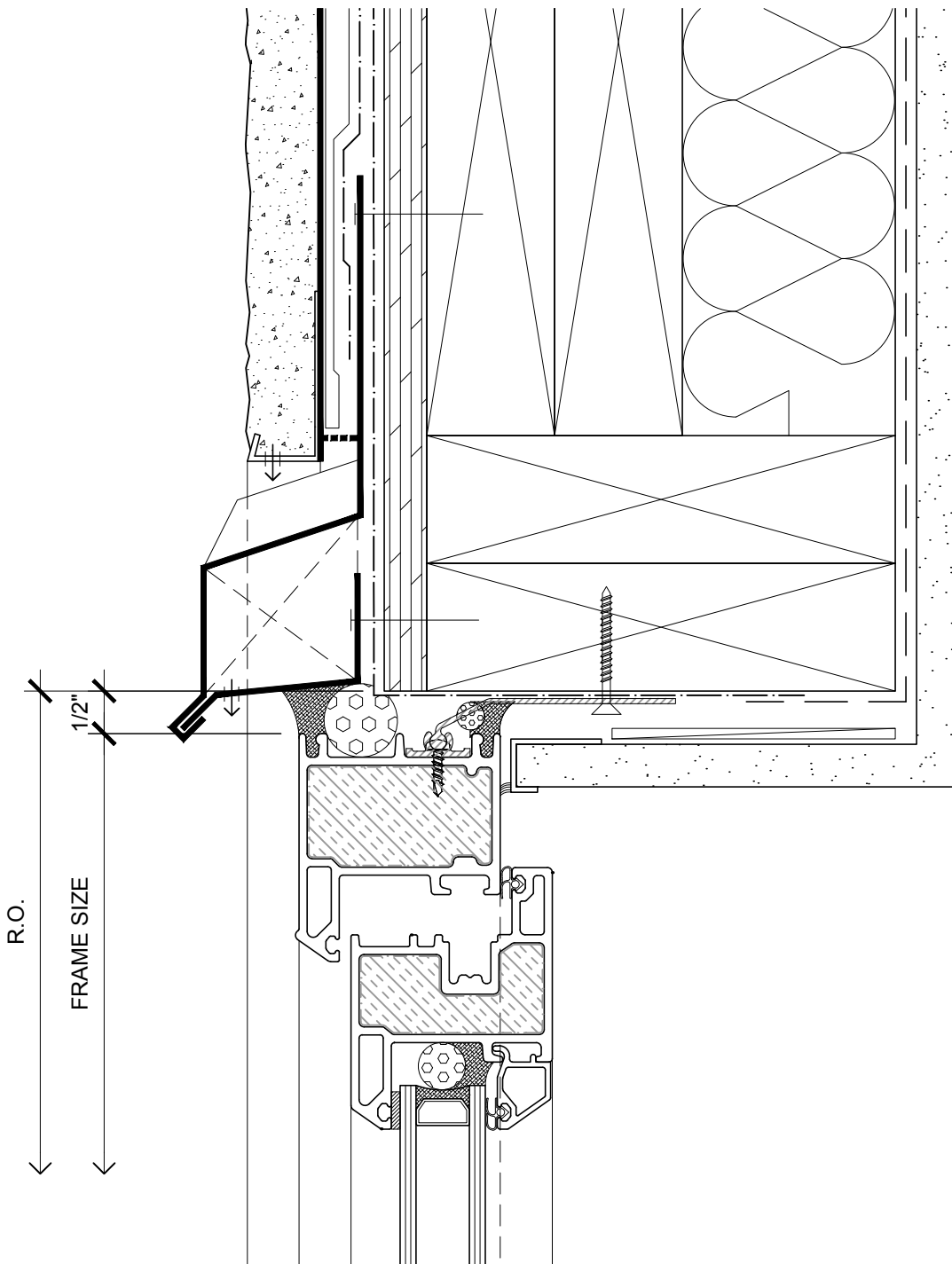
PLAN

NOTE: INSECT SCREENS, BRICK MOULD TRIM AND FRAME EXTENDER TRIM AVAILABLE



CASCADIA WINDOWS LTD.
 2460 CLUESIER WAY
 LANGLEY, BC CANADA V4W 3Y5

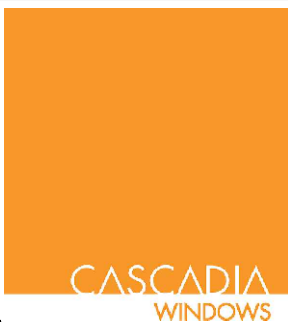
SERIES: SERIES 300 INSWING WINDOW (DUAL ACTION) WITH CLIPS [CL] AND INTERIOR SILL ANGLE - RECESSED INSTALLATION		DRAWING NO.: 300CL(C)-1.06	
DRAWING TITLE: TYPICAL WINDOW JAMB RAINSCREEN WALL ASSEMBLY, CEMENT BOARD CLADDING (C)		PROJECT NO.:	
ISSUE	DESCRIPTION	DATE	SCALE: 6" = 1'-0"
			DATE:
			DRAWN BY:
			CHECKED BY:



NOTE: THIS DETAIL IS FOR GENERAL ARRANGEMENT PURPOSES ONLY, AND DOES NOT NECESSARILY REPRESENT A DETAIL THAT IS APPROPRIATE FOR A SPECIFIC PROJECT. PRODUCTS AND ACCESSORIES PROVIDED BY CASCADIA MUST BE CONFIRMED FOR SPECIFIC PROJECTS.

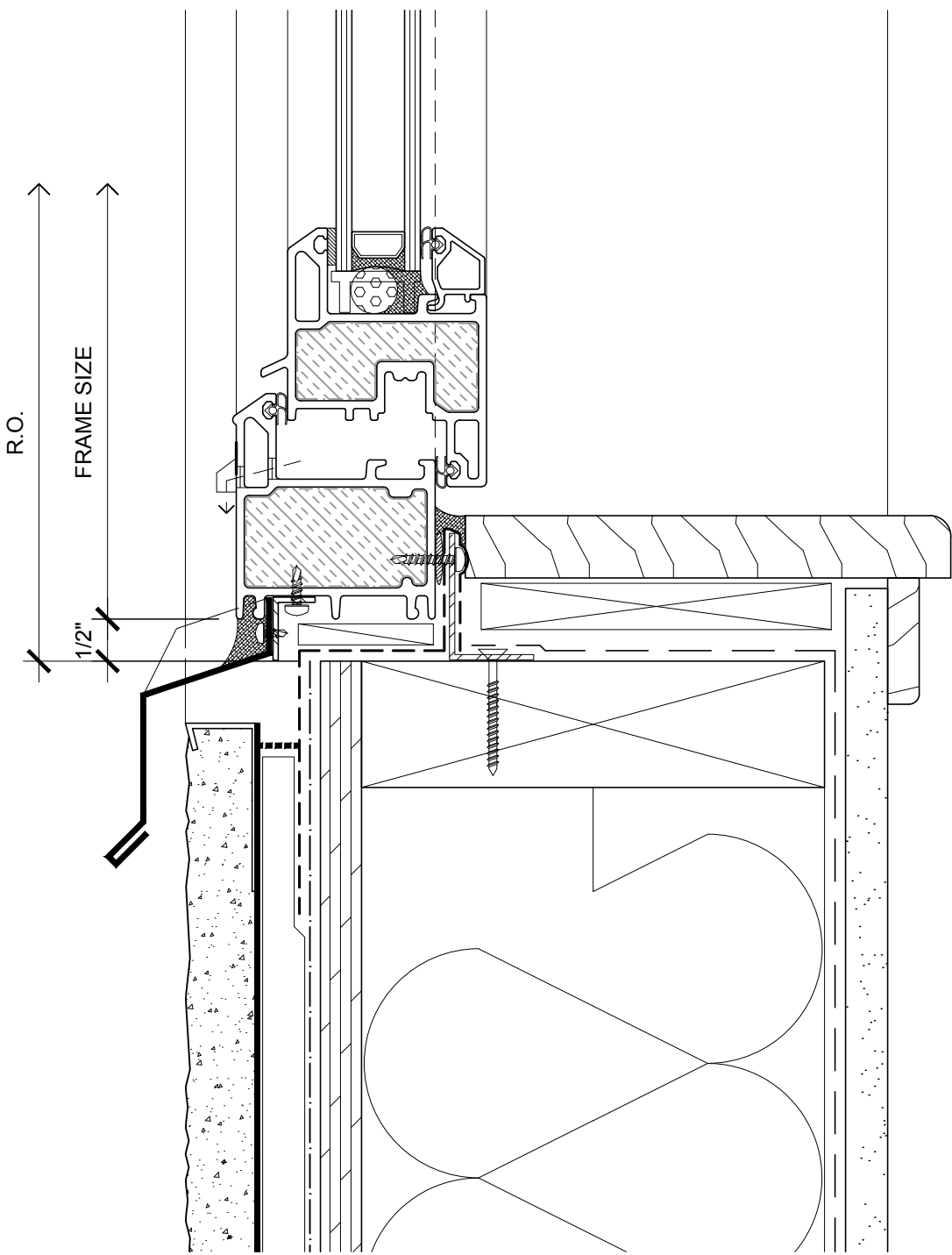
SECTION

NOTE: SUB-CLIPS AND ANCHOR CLIPS AT HEAD AND JAMBS ARE INTERMITTENT



CASCADIA WINDOWS LTD.
 2460 CLUESIER WAY
 LANGLEY, BC CANADA V4W 3Y5

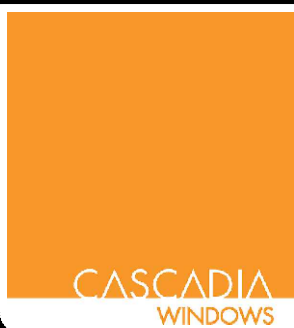
SERIES: SERIES 300 INSWING WINDOW (DUAL ACTION) WITH CLIPS [CL] AND INTERIOR SILL ANGLE - FLUSH INSTALLATION		DRAWING NO.: 300CL(S)-1.01	
DRAWING TITLE: TYPICAL WINDOW HEAD RAINSCREEN WALL ASSEMBLY, STUCCO CLADDING (S)		PROJECT NO.:	
ISSUE	DESCRIPTION	DATE	SCALE: 6" = 1'-0"
			DATE:
			DRAWN BY:
			CHECKED BY:



NOTE: THIS DETAIL IS FOR GENERAL ARRANGEMENT PURPOSES ONLY, AND DOES NOT NECESSARILY REPRESENT A DETAIL THAT IS APPROPRIATE FOR A SPECIFIC PROJECT. PRODUCTS AND ACCESSORIES PROVIDED BY CASCADIA MUST BE CONFIRMED FOR SPECIFIC PROJECTS.

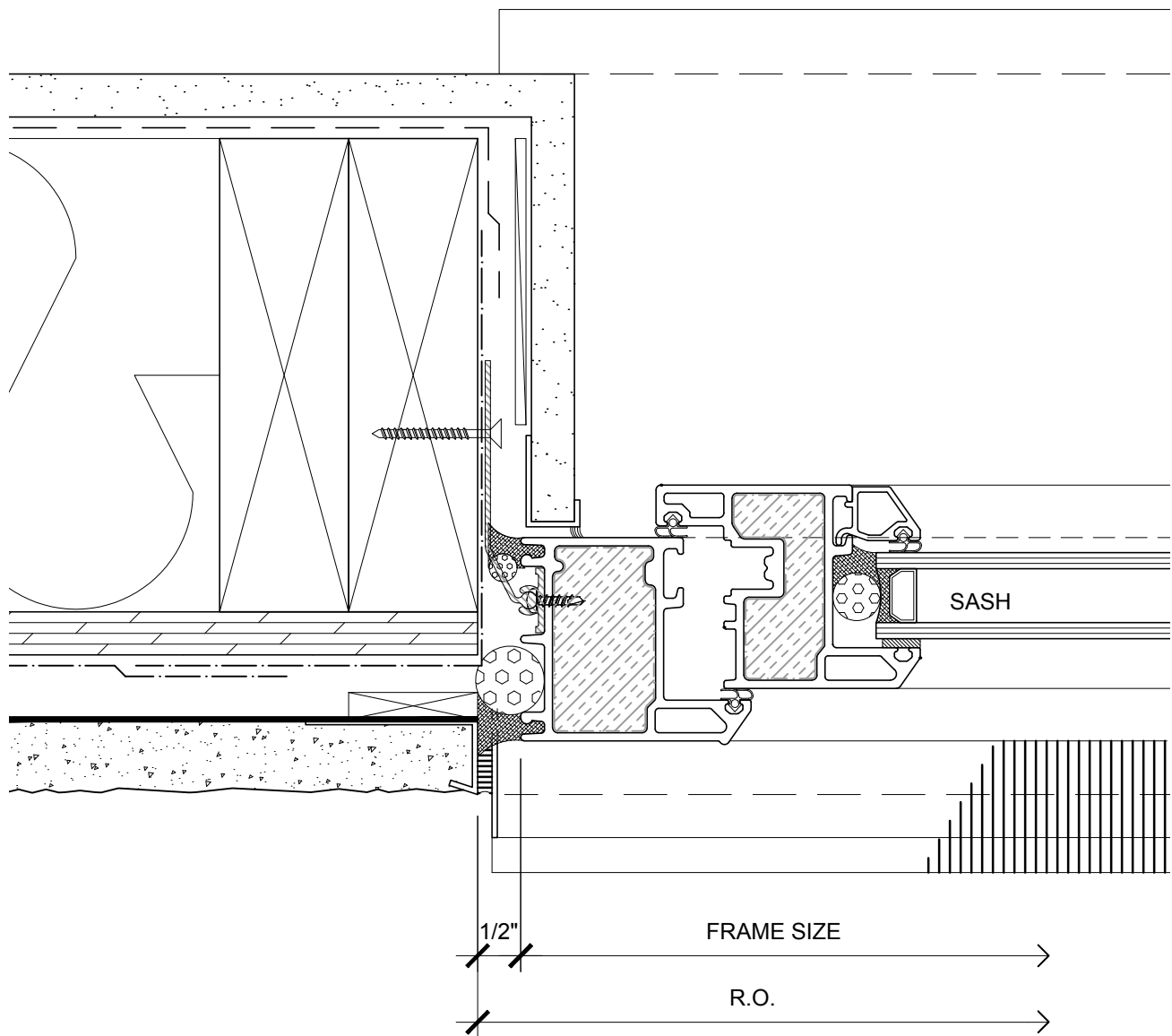
SECTION

NOTE: PROVIDE WATERPROOF SUB-SILL WITH POSITIVE DRAINAGE TO EXTERIOR



CASCADIA WINDOWS LTD.
 2160 CLUESIER WAY
 LANGLEY, BC CANADA V4W 3Y5

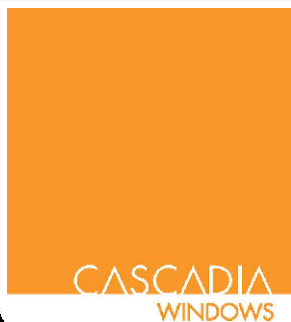
SERIES: SERIES 300 INSWING WINDOW (DUAL ACTION) WITH CLIPS [CL] AND INTERIOR SILL ANGLE - FLUSH INSTALLATION			DRAWING NO.: 300CL(S)-1.02
DRAWING TITLE: TYPICAL WINDOW SILL RAINSCREEN WALL ASSEMBLY, STUCCO CLADDING (S)			PROJECT NO.:
ISSUE	DESCRIPTION	DATE	SCALE: 6" = 1'-0"
			DATE:
			DRAWN BY:
			CHECKED BY:



NOTE: THIS DETAIL IS FOR GENERAL ARRANGEMENT PURPOSES ONLY, AND DOES NOT NECESSARILY REPRESENT A DETAIL THAT IS APPROPRIATE FOR A SPECIFIC PROJECT. PRODUCTS AND ACCESSORIES PROVIDED BY CASCADIA MUST BE CONFIRMED FOR SPECIFIC PROJECTS.

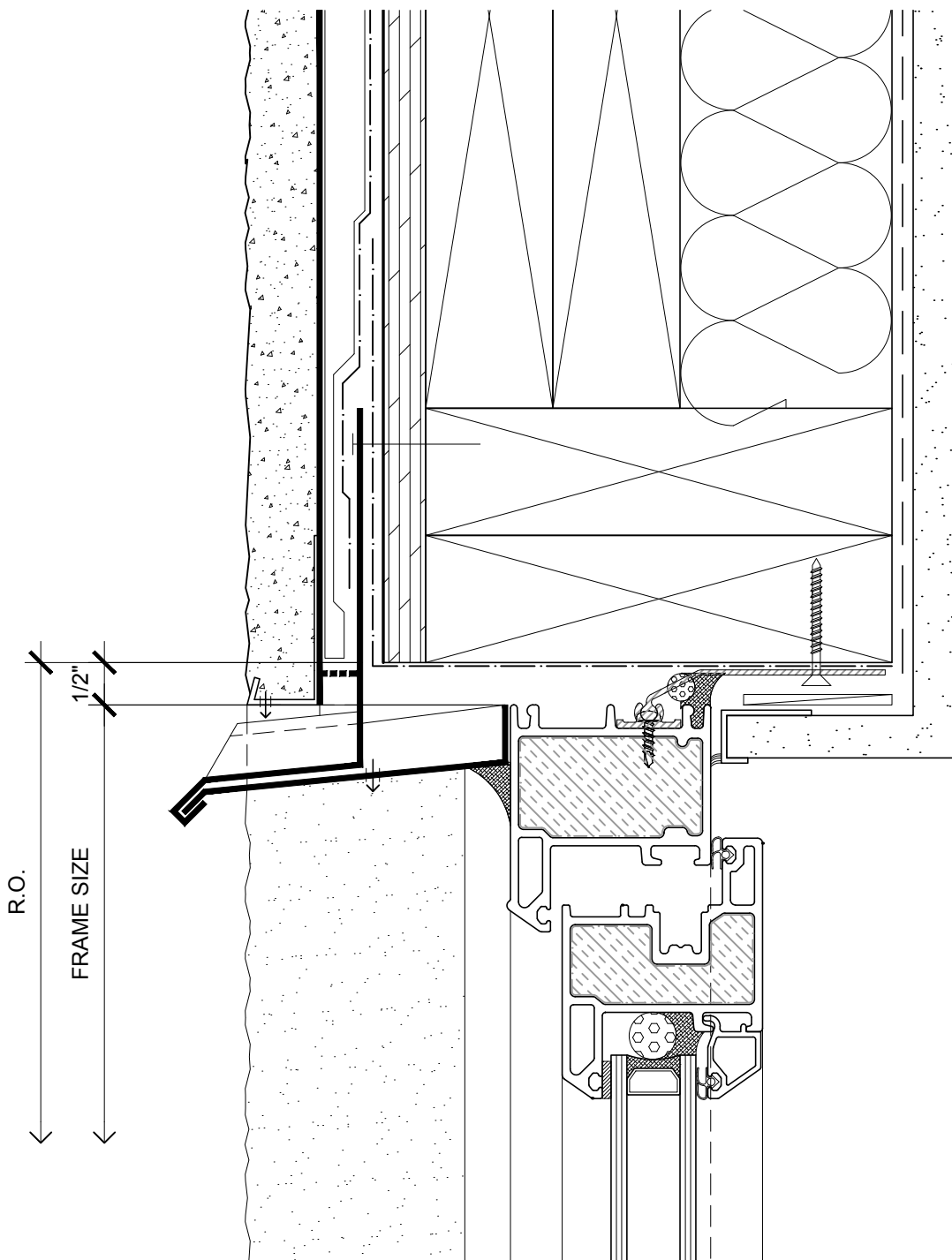
PLAN

NOTE: INSECT SCREENS, BRICK MOULD TRIM AND FRAME EXTENDER TRIM AVAILABLE



CASCADIA WINDOWS LTD.
 2160 CLUESIER WAY
 LANGLEY, BC CANADA V4W 3Y5

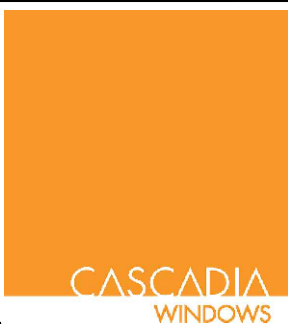
SERIES: SERIES 300 INSWING WINDOW (DUAL ACTION) WITH CLIPS [CL] AND INTERIOR SILL ANGLE - FLUSH INSTALLATION			DRAWING NO.: 300CL(S)-1.03
DRAWING TITLE: TYPICAL WINDOW JAMB RAINSCREEN WALL ASSEMBLY, STUCCO CLADDING (S)			PROJECT NO.:
ISSUE	DESCRIPTION	DATE	SCALE: 6" = 1'-0"
			DATE:
			DRAWN BY:
			CHECKED BY:



NOTE: THIS DETAIL IS FOR GENERAL ARRANGEMENT PURPOSES ONLY, AND DOES NOT NECESSARILY REPRESENT A DETAIL THAT IS APPROPRIATE FOR A SPECIFIC PROJECT. PRODUCTS AND ACCESSORIES PROVIDED BY CASCADIA MUST BE CONFIRMED FOR SPECIFIC PROJECTS.

SECTION

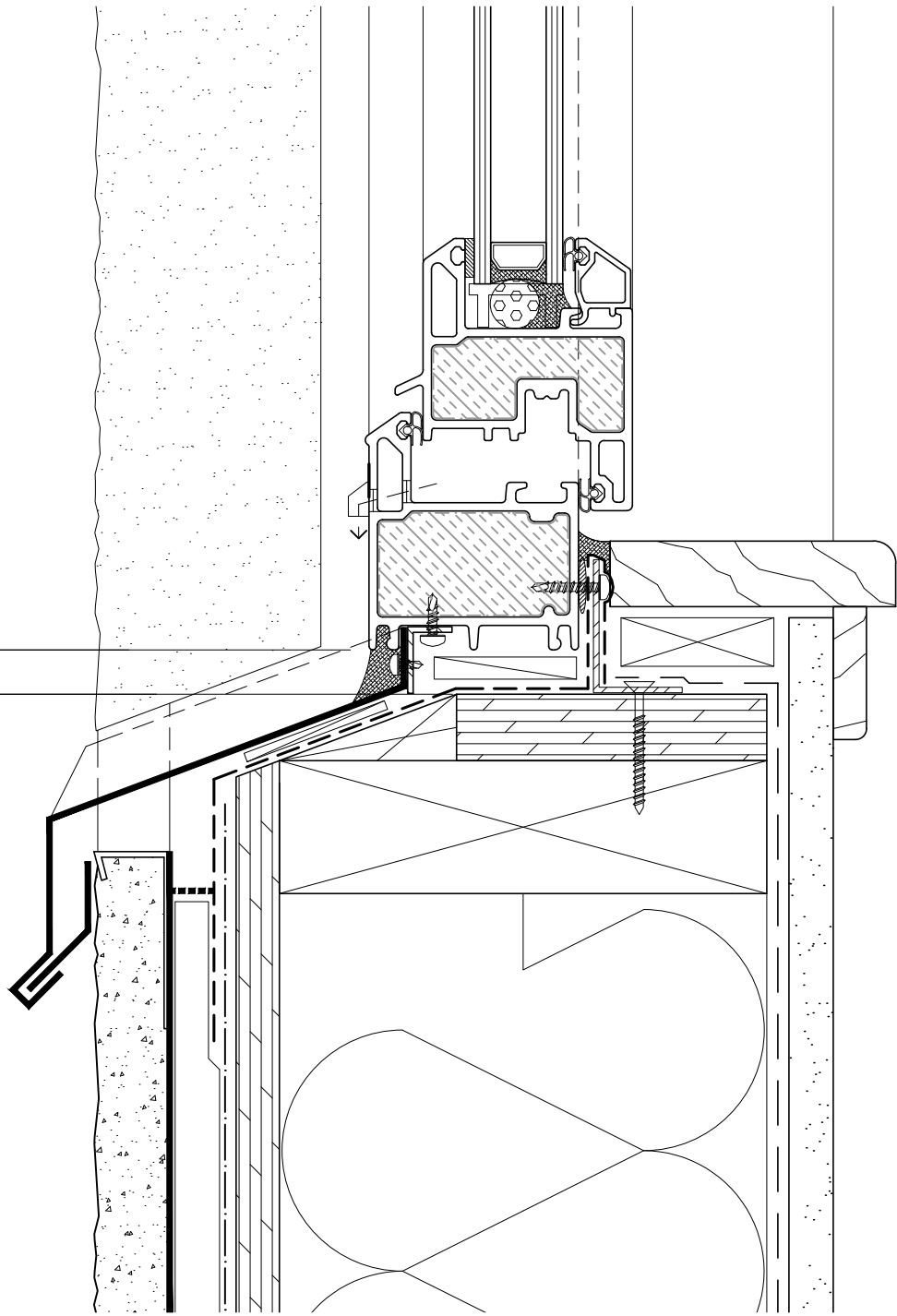
NOTE: SUB-CLIPS AND ANCHOR CLIPS AT HEAD AND JAMBS ARE INTERMITTENT



CASCADIA WINDOWS LTD.
 2160 CLOUDESLEY WAY
 LANGLEY, BC CANADA V4W 3Y5

SERIES: SERIES 300 INSWING WINDOW (DUAL ACTION) WITH CLIPS [CL] AND INTERIOR SILL ANGLE - RECESSED INSTALLATION		DRAWING NO.: 300CL(S)-1.04	
DRAWING TITLE: TYPICAL WINDOW HEAD RAINSCREEN WALL ASSEMBLY, STUCCO CLADDING (S)		PROJECT NO.:	
ISSUE	DESCRIPTION	DATE	SCALE: 6" = 1'-0"
			DATE:
			DRAWN BY:
			CHECKED BY:

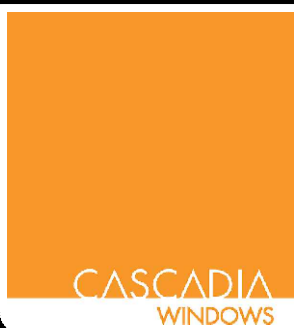
R.O.
 FRAME SIZE
 1/2"



NOTE: THIS DETAIL IS FOR GENERAL ARRANGEMENT PURPOSES ONLY, AND DOES NOT NECESSARILY REPRESENT A DETAIL THAT IS APPROPRIATE FOR A SPECIFIC PROJECT. PRODUCTS AND ACCESSORIES PROVIDED BY CASCADIA MUST BE CONFIRMED FOR SPECIFIC PROJECTS.

SECTION

NOTE: PROVIDE WATERPROOF SUB-SILL WITH POSITIVE DRAINAGE TO EXTERIOR



CASCADIA WINDOWS LTD.
 2460 CLUESIER WAY
 LANGLEY, BC CANADA V4W 3Y5

SERIES: **SERIES 300 INSWING WINDOW (DUAL ACTION) WITH CLIPS [CL] AND INTERIOR SILL ANGLE - RECESSED INSTALLATION**

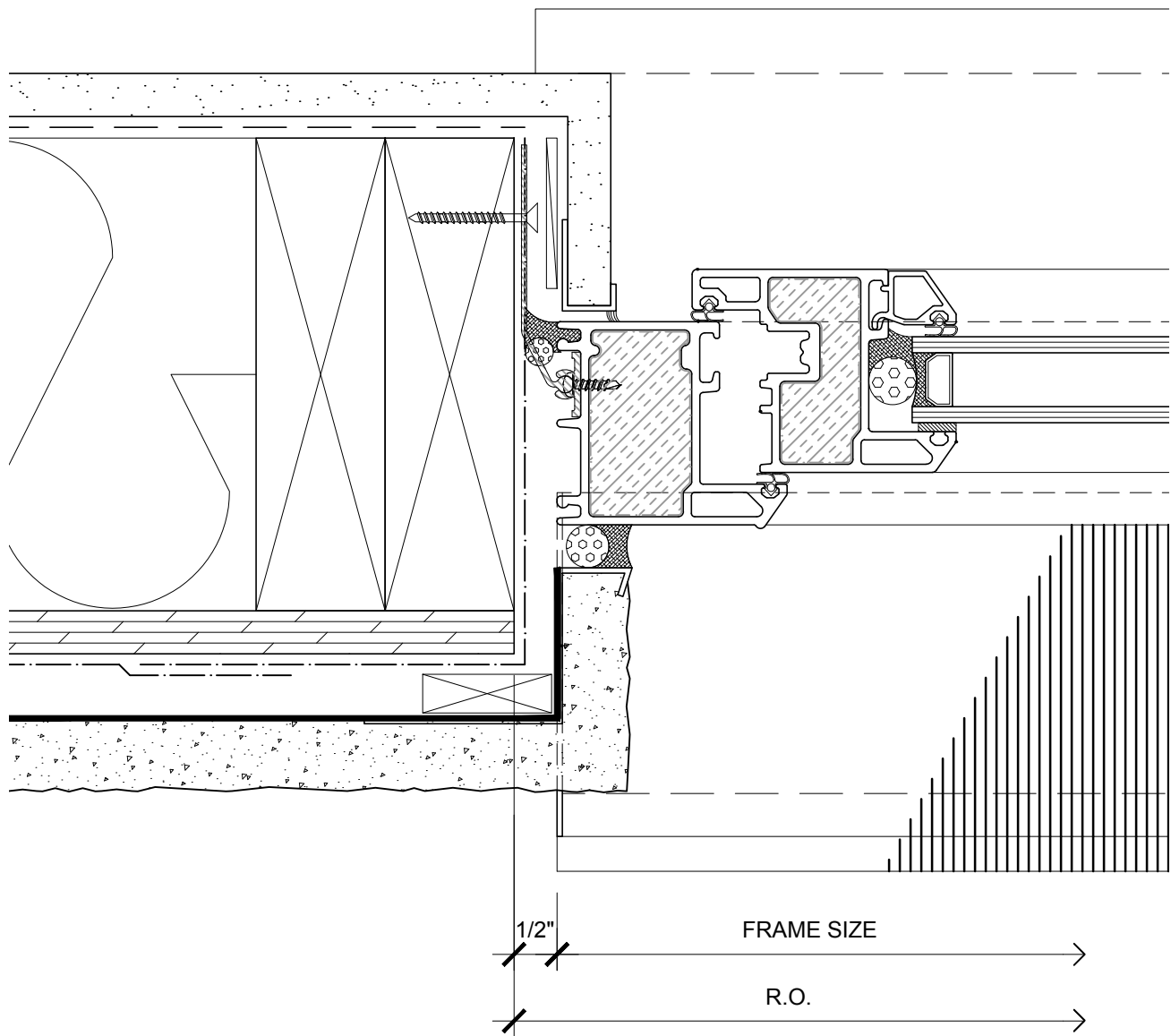
DRAWING NO.: **300CL(S)-1.05**

DRAWING TITLE: **TYPICAL WINDOW SILL RAINSCREEN WALL ASSEMBLY, STUCCO CLADDING (S)**

PROJECT NO.:

ISSUE	DESCRIPTION	DATE

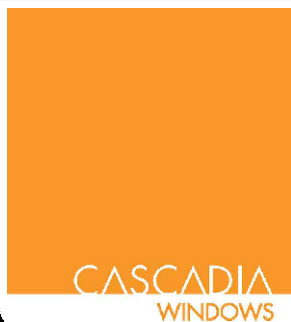
SCALE: 6" = 1'-0"
 DATE:
 DRAWN BY:
 CHECKED BY:



NOTE: THIS DETAIL IS FOR GENERAL ARRANGEMENT PURPOSES ONLY, AND DOES NOT NECESSARILY REPRESENT A DETAIL THAT IS APPROPRIATE FOR A SPECIFIC PROJECT. PRODUCTS AND ACCESSORIES PROVIDED BY CASCADIA MUST BE CONFIRMED FOR SPECIFIC PROJECTS.

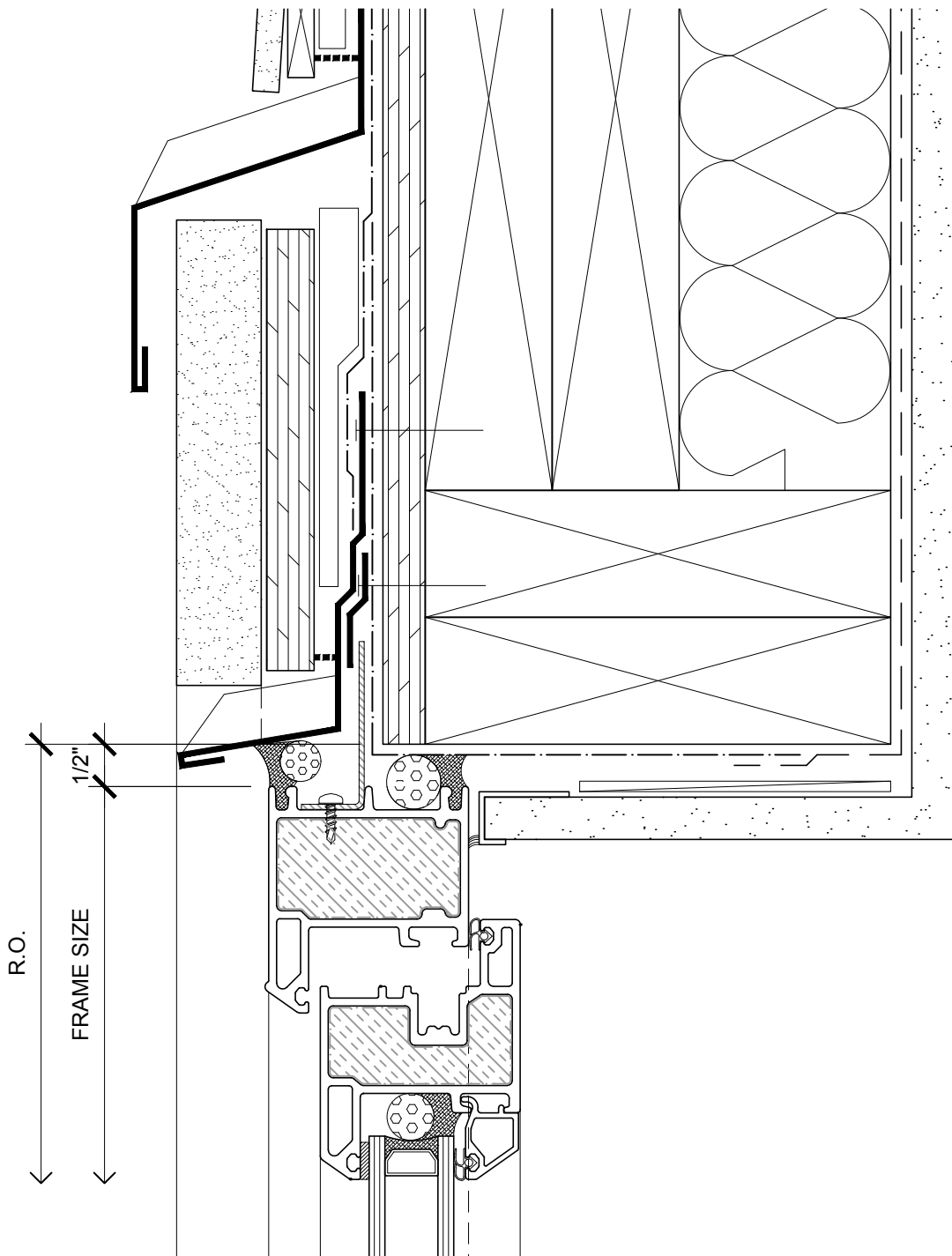
PLAN

NOTE: INSECT SCREENS, BRICK MOULD TRIM AND FRAME EXTENDER TRIM AVAILABLE



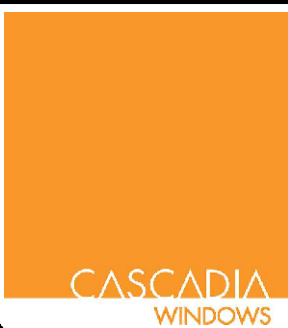
CASCADIA WINDOWS LTD.
 2460 CLUESIER WAY
 LANGLEY, BC CANADA V4W 3Y5

SERIES: SERIES 300 INSWING WINDOW (DUAL ACTION) WITH CLIPS [CL] AND INTERIOR SILL ANGLE - RECESSED INSTALLATION		DRAWING NO.: 300CL(S)-1.06	
DRAWING TITLE: TYPICAL WINDOW JAMB RAINSCREEN WALL ASSEMBLY, STUCCO CLADDING (S)		PROJECT NO.:	
ISSUE	DESCRIPTION	DATE	SCALE: 6" = 1'-0"
			DATE:
			DRAWN BY:
			CHECKED BY:



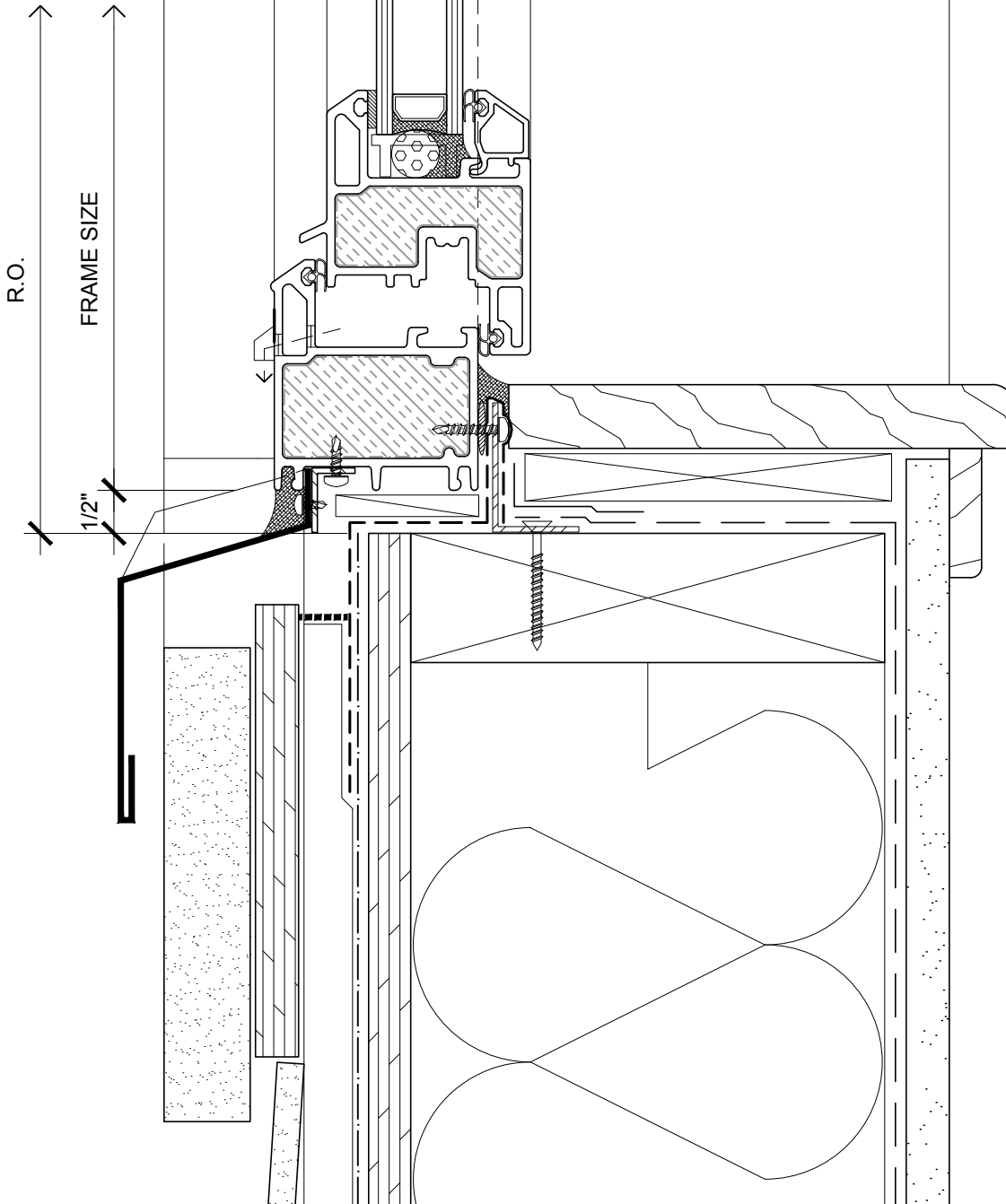
NOTE: THIS DETAIL IS FOR GENERAL ARRANGEMENT PURPOSES ONLY, AND DOES NOT NECESSARILY REPRESENT A DETAIL THAT IS APPROPRIATE FOR A SPECIFIC PROJECT. PRODUCTS AND ACCESSORIES PROVIDED BY CASCADIA MUST BE CONFIRMED FOR SPECIFIC PROJECTS.

SECTION



CASCADIA WINDOWS LTD.
 2160 CLOUSELIER WAY
 LANGLEY, BC CANADA V4W 3Y5

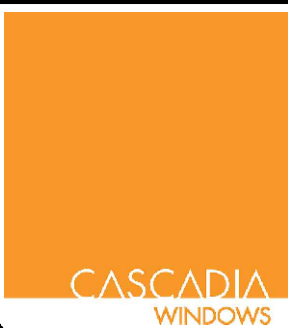
SERIES: SERIES 300 INSWING WINDOW (DUAL ACTION) WITH FLANGE [FL] AND INTERIOR SILL ANGLE			DRAWING NO.: 300FL(C)-1.01
DRAWING TITLE: TYPICAL WINDOW HEAD RAINSCREEN WALL ASSEMBLY, CEMENT BOARD CLADDING (C)			PROJECT NO.:
ISSUE	DESCRIPTION	DATE	SCALE: 6" = 1'-0"
			DATE:
			DRAWN BY:
			CHECKED BY:



NOTE: THIS DETAIL IS FOR GENERAL ARRANGEMENT PURPOSES ONLY, AND DOES NOT NECESSARILY REPRESENT A DETAIL THAT IS APPROPRIATE FOR A SPECIFIC PROJECT. PRODUCTS AND ACCESSORIES PROVIDED BY CASCADIA MUST BE CONFIRMED FOR SPECIFIC PROJECTS.

SECTION

NOTE: PROVIDE WATERPROOF SUB-SILL WITH POSITIVE DRAINAGE TO EXTERIOR



CASCADIA WINDOWS LTD.
2160 CLOUDESLEY WAY
LANGLEY, BC CANADA V4W 3Y5

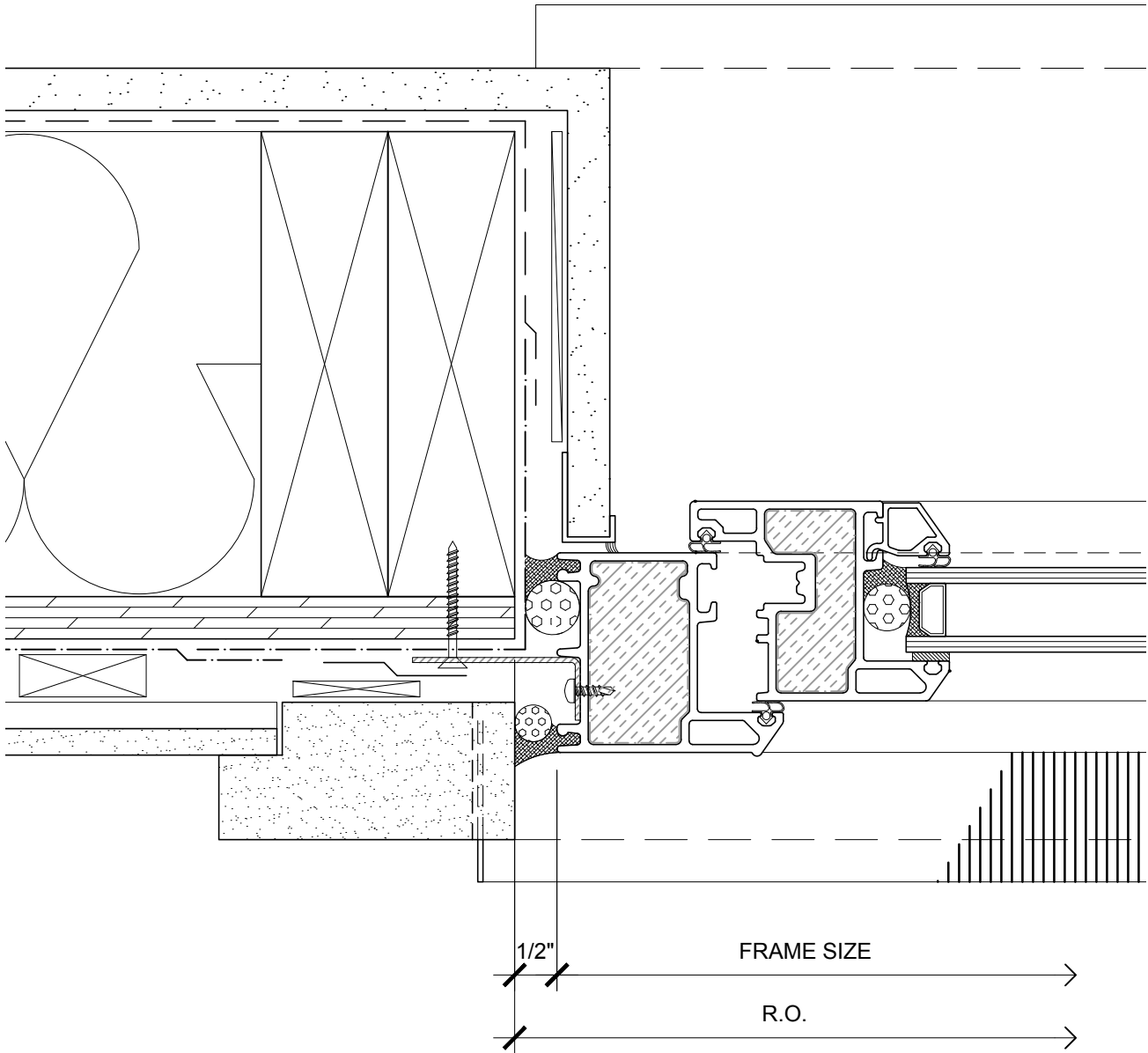
SERIES: **SERIES 300 INSWING WINDOW (DUAL ACTION)
WITH FLANGE [FL] AND INTERIOR SILL ANGLE**

DRAWING NO.:
300FL(C)-1.02

DRAWING TITLE:
**TYPICAL WINDOW SILL
RAINSCREEN WALL ASSEMBLY, CEMENT BOARD CLADDING (C)**

PROJECT NO.:

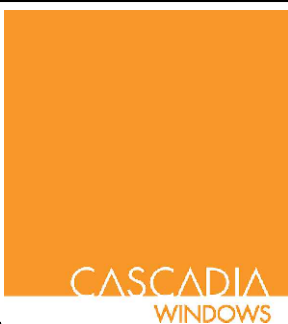
ISSUE	DESCRIPTION	DATE	SCALE: 6" = 1'-0"
			DATE:
			DRAWN BY:
			CHECKED BY:



NOTE: THIS DETAIL IS FOR GENERAL ARRANGEMENT PURPOSES ONLY, AND DOES NOT NECESSARILY REPRESENT A DETAIL THAT IS APPROPRIATE FOR A SPECIFIC PROJECT. PRODUCTS AND ACCESSORIES PROVIDED BY CASCADIA MUST BE CONFIRMED FOR SPECIFIC PROJECTS.

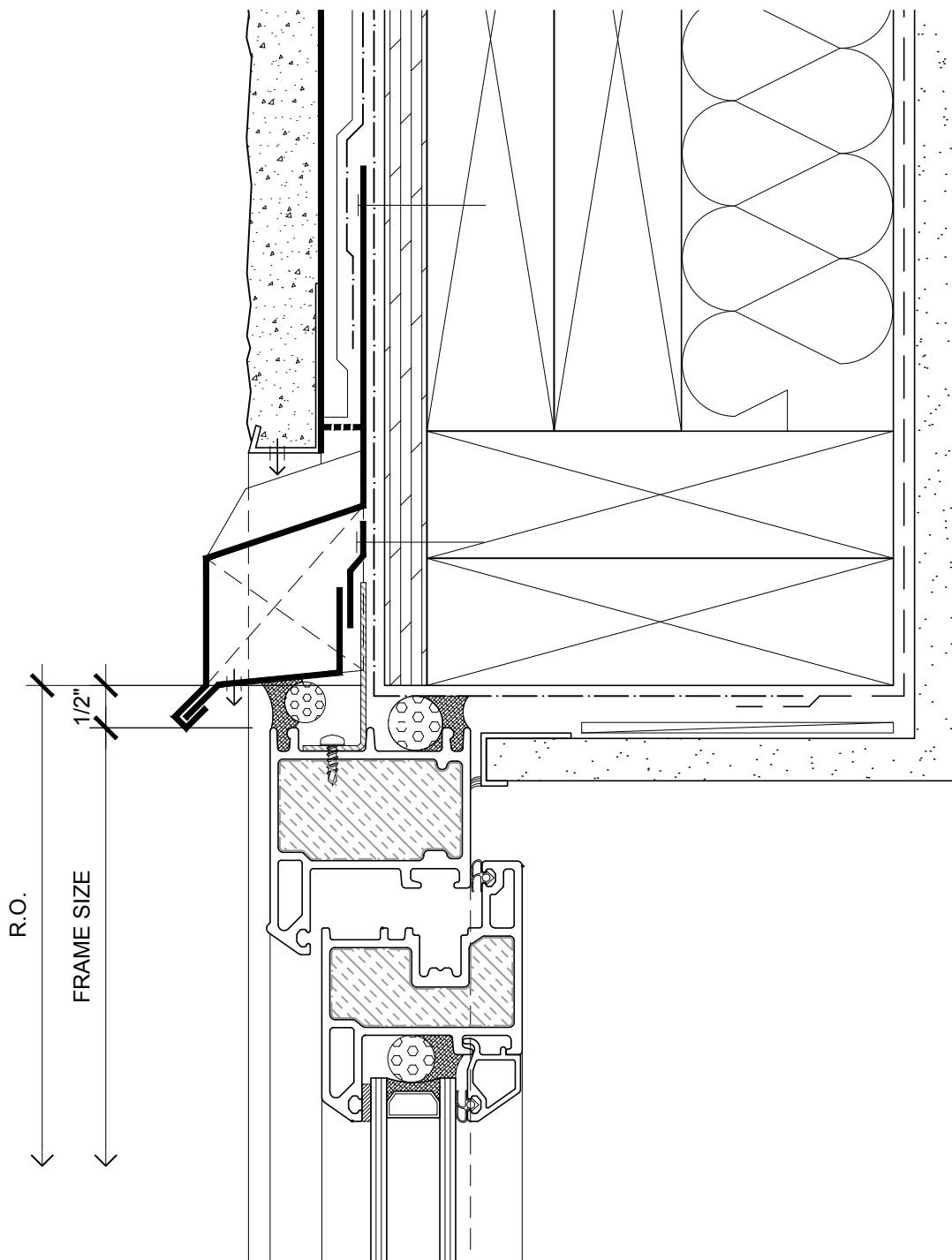
PLAN

NOTE: INSECT SCREENS, BRICK MOULD TRIM AND FRAME EXTENDER TRIM AVAILABLE



CASCADIA WINDOWS LTD.
2460 CLUESIER WAY
LANGLEY, BC CANADA V4W 3Y5

SERIES: SERIES 300 INSWING WINDOW (DUAL ACTION) WITH FLANGE [FL] AND INTERIOR SILL ANGLE			DRAWING NO.: 300FL(C)-1.03
DRAWING TITLE: TYPICAL WINDOW JAMB RAINSCREEN WALL ASSEMBLY, CEMENT BOARD CLADDING (C)			PROJECT NO.:
ISSUE	DESCRIPTION	DATE	SCALE: 6" = 1'-0"
			DATE:
			DRAWN BY:
			CHECKED BY:



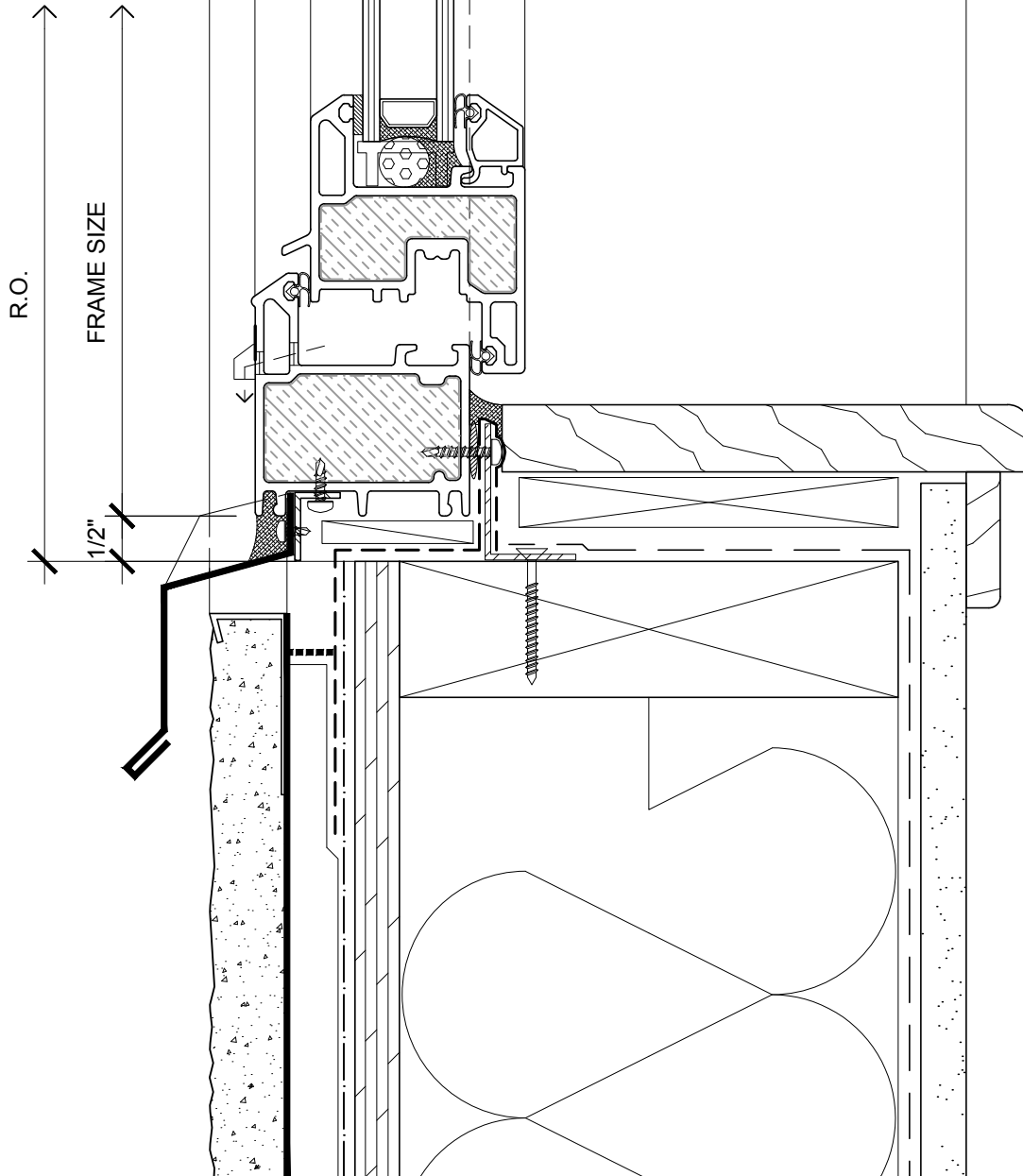
NOTE: THIS DETAIL IS FOR GENERAL ARRANGEMENT PURPOSES ONLY, AND DOES NOT NECESSARILY REPRESENT A DETAIL THAT IS APPROPRIATE FOR A SPECIFIC PROJECT. PRODUCTS AND ACCESSORIES PROVIDED BY CASCADIA MUST BE CONFIRMED FOR SPECIFIC PROJECTS.

SECTION



CASCADIA WINDOWS LTD.
 2460 CLUESIER WAY
 LANGLEY, BC CANADA V4W 3Y5

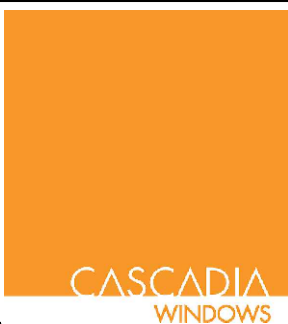
SERIES: SERIES 300 INSWING WINDOW (DUAL ACTION) WITH FLANGE [FL] AND INTERIOR SILL ANGLE			DRAWING NO.: 300FL(S)-1.01
DRAWING TITLE: TYPICAL WINDOW HEAD RAINSCREEN WALL ASSEMBLY, STUCCO CLADDING (C)			PROJECT NO.:
ISSUE	DESCRIPTION	DATE	SCALE: 6" = 1'-0"
			DATE:
			DRAWN BY:
			CHECKED BY:



NOTE: THIS DETAIL IS FOR GENERAL ARRANGEMENT PURPOSES ONLY, AND DOES NOT NECESSARILY REPRESENT A DETAIL THAT IS APPROPRIATE FOR A SPECIFIC PROJECT. PRODUCTS AND ACCESSORIES PROVIDED BY CASCADIA MUST BE CONFIRMED FOR SPECIFIC PROJECTS.

SECTION

NOTE: PROVIDE WATERPROOF SUB-SILL WITH POSITIVE DRAINAGE TO EXTERIOR



CASCADIA WINDOWS LTD.
 2460 CLUESIER WAY
 LANGLEY, BC CANADA V4W 3Y5

SERIES: **SERIES 300 INSWING WINDOW (DUAL ACTION)
 WITH FLANGE [FL] AND INTERIOR SILL ANGLE**

DRAWING NO.:
300FL(S)-1.02

DRAWING TITLE:
**TYPICAL WINDOW SILL
 RAINSCREEN WALL ASSEMBLY, STUCCO CLADDING (C)**

PROJECT NO.:

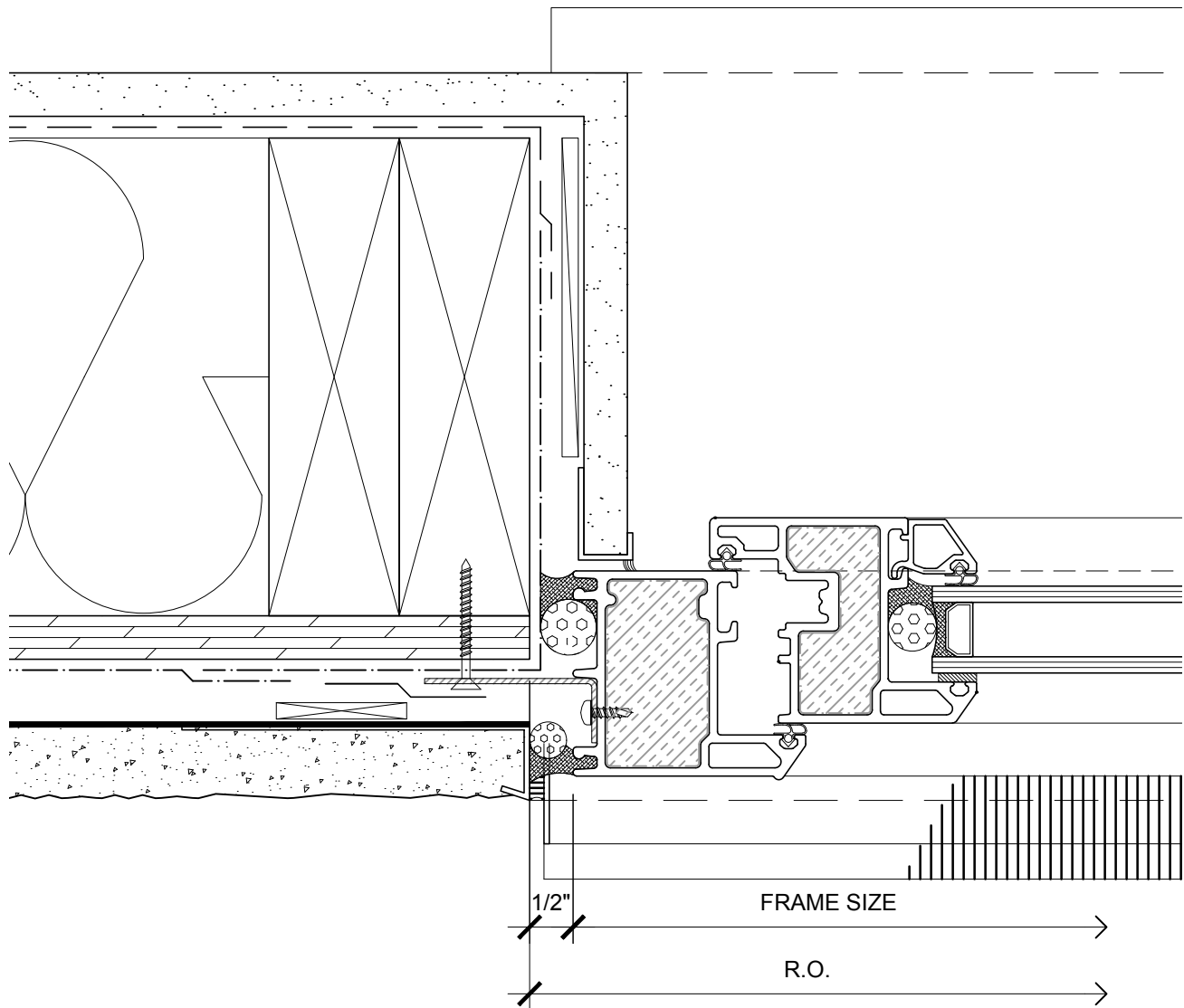
ISSUE	DESCRIPTION	DATE

SCALE: 6" = 1'-0"

DATE:

DRAWN BY:

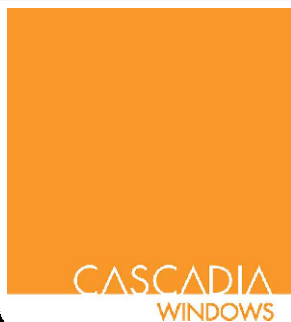
CHECKED BY:



NOTE: THIS DETAIL IS FOR GENERAL ARRANGEMENT PURPOSES ONLY, AND DOES NOT NECESSARILY REPRESENT A DETAIL THAT IS APPROPRIATE FOR A SPECIFIC PROJECT. PRODUCTS AND ACCESSORIES PROVIDED BY CASCADIA MUST BE CONFIRMED FOR SPECIFIC PROJECTS.

PLAN

NOTE: INSECT SCREENS, BRICK MOULD TRIM AND FRAME EXTENDER TRIM AVAILABLE



CASCADIA WINDOWS LTD.
2160 CLUESIER WAY
LANGLEY, BC CANADA V4W 3Y5

SERIES: SERIES 300 INSWING WINDOW (DUAL ACTION) WITH FLANGE [FL] AND INTERIOR SILL ANGLE		DRAWING NO.: 300FL(S)-1.03	
DRAWING TITLE: TYPICAL WINDOW JAMB RAINSCREEN WALL ASSEMBLY, STUCCO CLADDING (C)		PROJECT NO.:	
ISSUE	DESCRIPTION	DATE	SCALE: 6" = 1'-0"
			DATE:
			DRAWN BY:
			CHECKED BY: