

NOTE: THIS DETAIL IS FOR GENERAL ARRANGEMENT PURPOSES ONLY, AND DOES NOT NECESSARILY REPRESENT A DETAIL THAT IS APPROPRIATE FOR A SPECIFIC PROJECT. PRODUCTS AND ACCESSORIES PROVIDED BY CASCADIA MUST BE CONFIRMED FOR SPECIFIC PROJECTS.

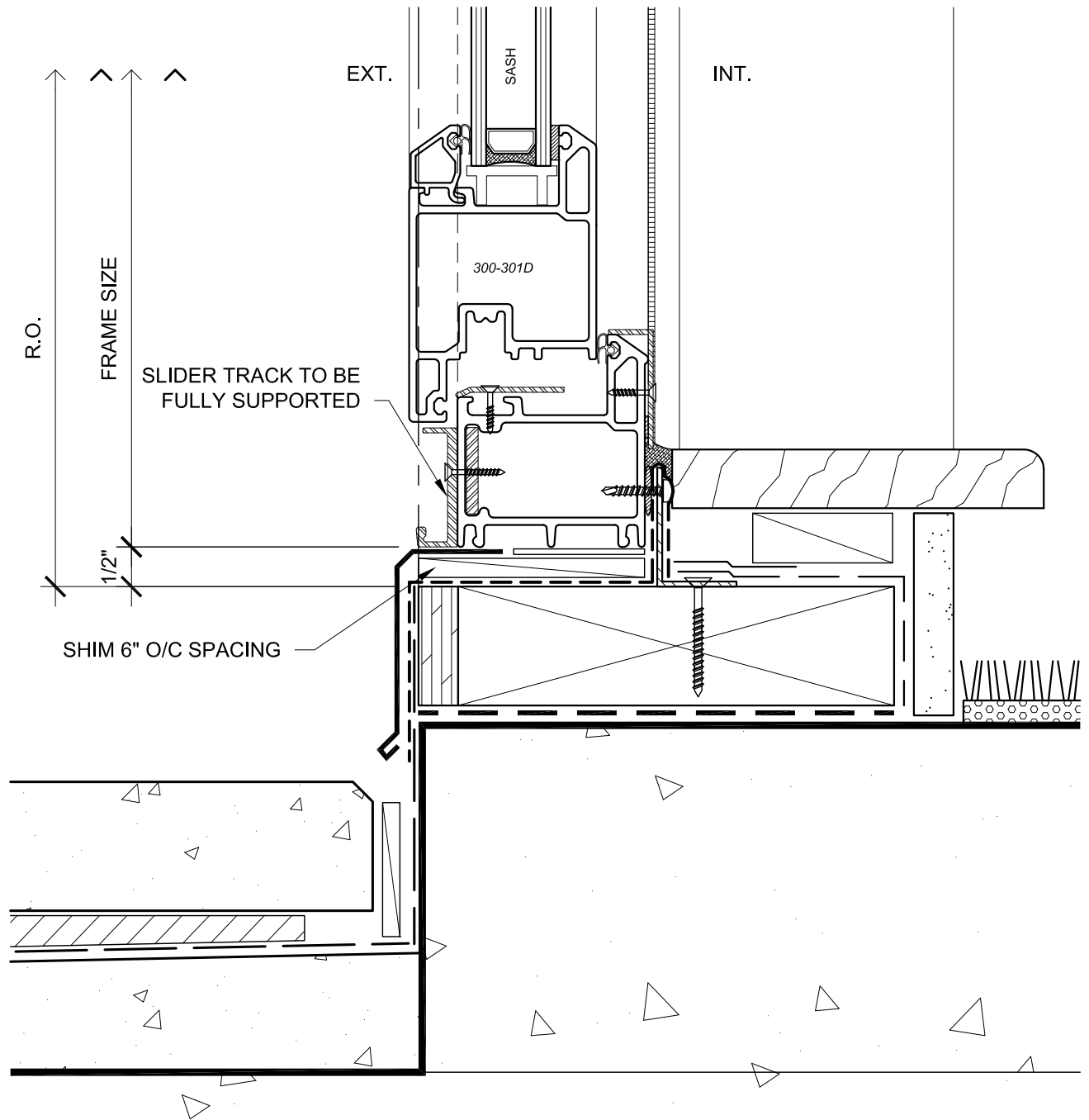
SECTION

NOTE: SUB-CLIPS (WITHIN FRAME) AT HEAD AND JAMBS ARE INTERMITTENT



CASCADIA WINDOWS LTD.
27050 GLOUCESTER WAY
LANGLEY, BC CANADA, V4W 3Y5

| | | | | | |
|----------------|-------------|--|-------------|--------------|----------------------|
| SERIES: | | SERIES 303 COMPRESSION SLIDER WITH CLIPS [CL] AND INTERIOR SILL ANGLE | | DRAWING NO.: | 303CL(S)-1.01 |
| DRAWING TITLE: | | TYPICAL DOOR HEAD RAINSCREEN WALL ASSEMBLY, STUCCO CLADDING (S) | | PROJECT NO.: | - |
| ISSUE | DESCRIPTION | DATE | SCALE: | 6" = 1'-0" | |
| 1 | VERSION 1 | 14 MAY, 2010 | DATE: | 14 MAY, 2010 | |
| 2 | | | DRAWN BY: | SM | |
| 3 | | | CHECKED BY: | - | |



NOTE: THIS DETAIL IS FOR GENERAL ARRANGEMENT PURPOSES ONLY, AND DOES NOT NECESSARILY REPRESENT A DETAIL THAT IS APPROPRIATE FOR A SPECIFIC PROJECT. PRODUCTS AND ACCESSORIES PROVIDED BY CASCADIA MUST BE CONFIRMED FOR SPECIFIC PROJECTS.

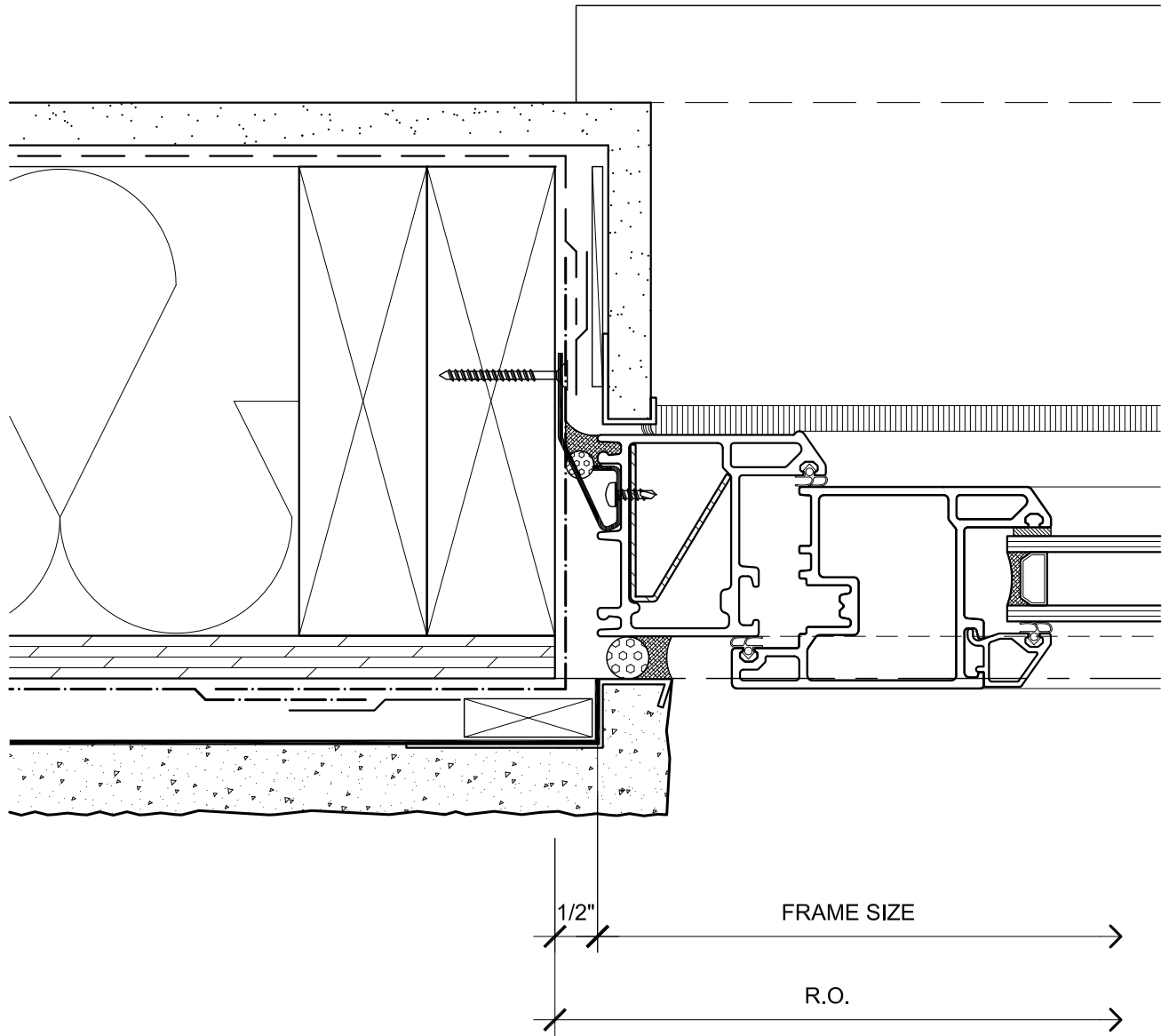
SECTION

NOTE: PROVIDE WATERPROOF SUB-SILL WITH POSITIVE DRAINAGE TO EXTERIOR



CASCADIA WINDOWS LTD.
 27050 GLOUCESTER WAY
 LANGLEY, BC CANADA, V4W 3Y5

| | | | | | |
|----------------|-------------|---|-------------|--------------|----------------------|
| SERIES: | | SERIES 303 COMPRESSION SLIDER | | DRAWING NO.: | 303CL(S)-1.02 |
| | | WITH CLIPS [CL] AND INTERIOR SILL ANGLE | | PROJECT NO.: | - |
| DRAWING TITLE: | | TYPICAL DOOR THRESHOLD RAINSCREEN WALL ASSEMBLY, STUCCO CLADDING (S) | | | |
| ISSUE | DESCRIPTION | DATE | SCALE: | 6" = 1'-0" | |
| 1 | VERSION 1 | 14 MAY, 2010 | DATE: | 14 MAY, 2010 | |
| 2 | | | DRAWN BY: | SM | |
| 3 | | | CHECKED BY: | - | |



NOTE: THIS DETAIL IS FOR GENERAL ARRANGEMENT PURPOSES ONLY, AND DOES NOT NECESSARILY REPRESENT A DETAIL THAT IS APPROPRIATE FOR A SPECIFIC PROJECT. PRODUCTS AND ACCESSORIES PROVIDED BY CASCADIA MUST BE CONFIRMED FOR SPECIFIC PROJECTS.

PLAN

NOTE: COMPATIBLE WITH RETRACTABLE TYPE INSECT SCREENS. BRICK MOULD TRIM AND FRAME EXTENDER TRIM AVAILABLE



CASCADIA WINDOWS LTD.
27050 GLOUCESTER WAY
LANGLEY, BC CANADA, V4W 3Y5

| | | | | | |
|----------------|-------------|---|-------------|--------------|----------------------|
| SERIES: | | SERIES 303 COMPRESSION SLIDER WITH CLIPS [CL] AND INTERIOR SILL ANGLE | | DRAWING NO.: | 303CL(S)-1.03 |
| DRAWING TITLE: | | TYPICAL DOOR JAMB RAINSCREEN WALL ASSEMBLY, STUCCO CLADDING (S) | | PROJECT NO.: | - |
| ISSUE | DESCRIPTION | DATE | SCALE: | 6" = 1'-0" | |
| 1 | VERSION 1 | 14 MAY, 2010 | DATE: | 14 MAY, 2010 | |
| 2 | | | DRAWN BY: | SM | |
| 3 | | | CHECKED BY: | - | |