

SELF-ADHERED
MEMBRANE.

#10x1 1/2" SS SELF
DRILLING SCREW
OR DT2000. 3 PER
STRAP ANCHOR.

1/2"

R.O.

FRAME SIZE

EXT

INT

SLIDE-IN DOOR

PATENTED

DRAFT

NOTE: THIS DRAFT DETAIL IS FOR GENERAL ARRANGEMENT PURPOSES ONLY, AND DOES NOT NECESSARILY REPRESENT A DETAIL THAT IS APPROPRIATE FOR A SPECIFIC PROJECT. PRODUCTS AND ACCESSORIES PROVIDED BY CASCADIA MUST BE CONFIRMED FOR SPECIFIC PROJECTS.

NOTE: ANCHOR CLIPS AT HEAD, SILL AND JAMBS ARE INTERMITTENT

CASCADIA WINDOWS LTD.
#101-5350 275TH STREET
LANGLEY, BC, CANADA V4W 0C1

DRAWING TITLE: UNIVERSAL SERIES - SLIDE-IN DOOR HEAD
RAINSCREEN WALL ASSEMBLY, EXTERIOR INSULATION

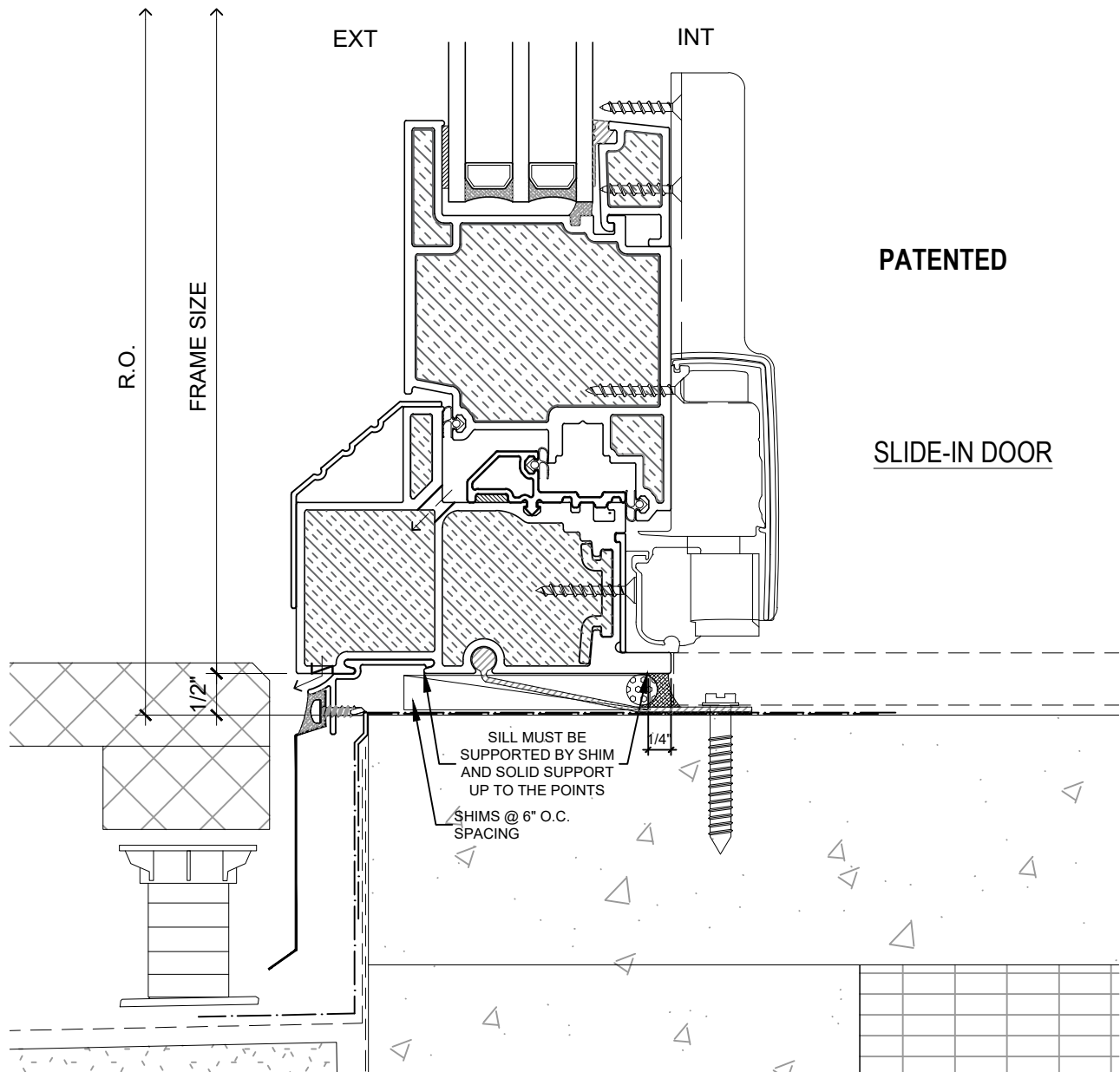
DRAWING NO.: D-1.01

SCALE: 6" = 1'-0"

PATENTED

DATE: 26 NOVEMBER, 2018

DRAWN BY: CP



DRAFT

NOTE: THIS DRAFT DETAIL IS FOR GENERAL ARRANGEMENT PURPOSES ONLY, AND DOES NOT NECESSARILY REPRESENT A DETAIL THAT IS APPROPRIATE FOR A SPECIFIC PROJECT. PRODUCTS AND ACCESSORIES PROVIDED BY CASCADIA MUST BE CONFIRMED FOR SPECIFIC PROJECTS.

NOTE: ANCHOR CLIPS AT HEAD, SILL AND JAMBS ARE INTERMITTENT

CASCADIA WINDOWS LTD.
 #101-5350 275TH STREET
 LANGLEY, BC, CANADA V4W 0C1

DRAWING TITLE: **UNIVERSAL SERIES - SLIDE-IN DOOR SILL**
RAINSCREEN WALL ASSEMBLY, EXTERIOR INSULATION

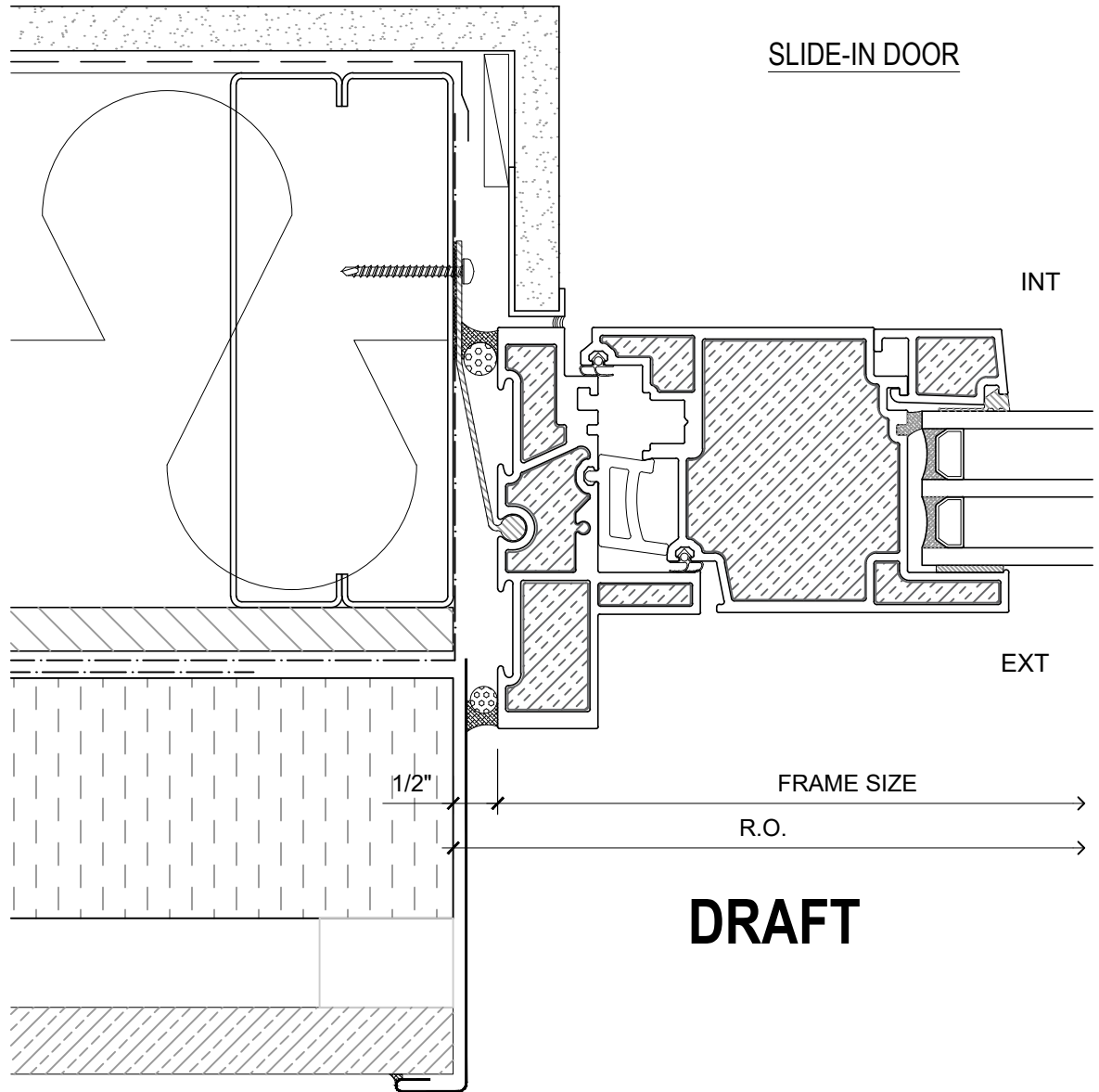
DRAWING NO.: **D-1.02**

SCALE: 6" = 1'-0"

PATENTED

DATE: 26 NOVEMBER, 2018

DRAWN BY: CP



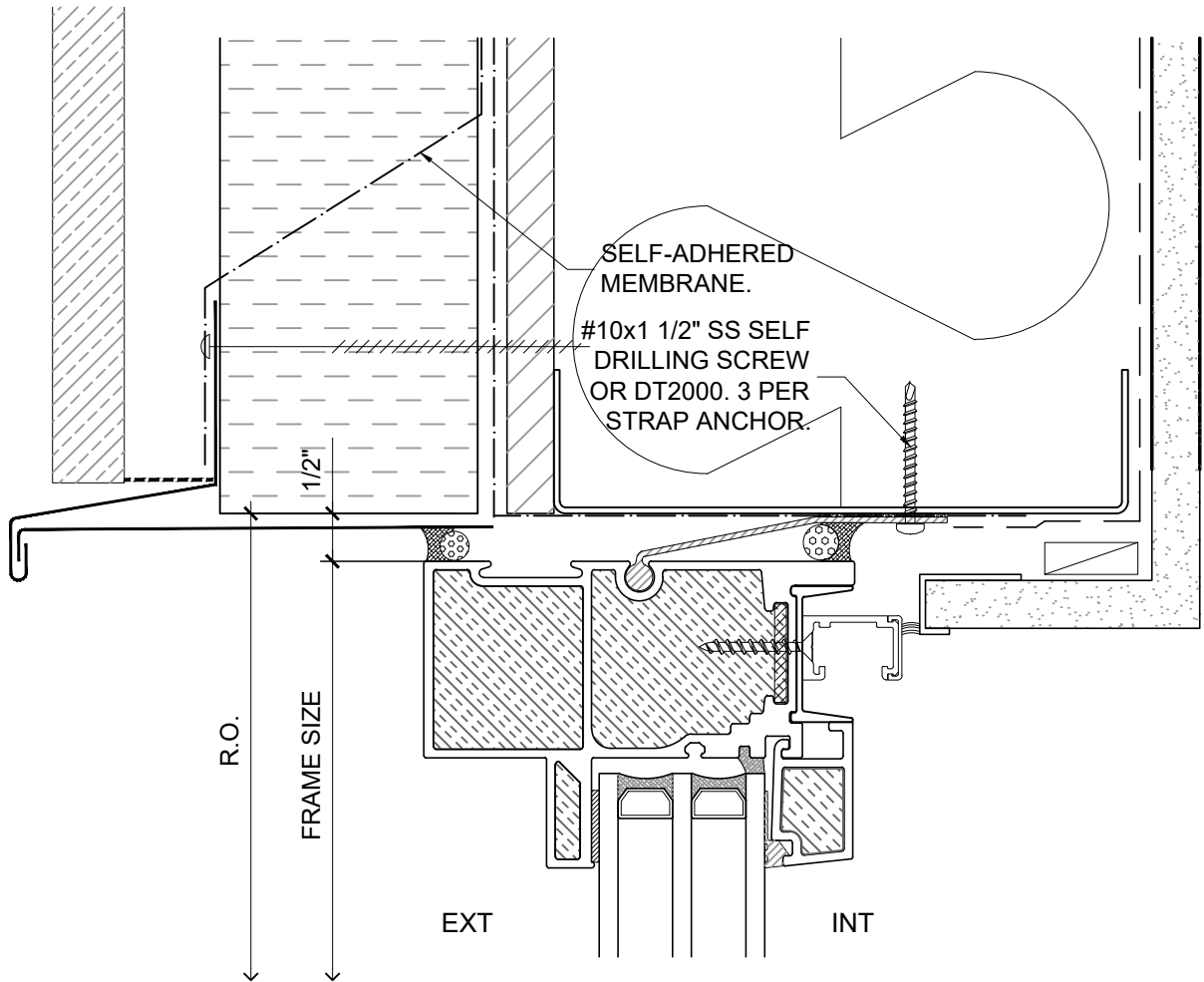
DRAFT

PATENTED

NOTE: THIS DRAFT DETAIL IS FOR GENERAL ARRANGEMENT PURPOSES ONLY, AND DOES NOT NECESSARILY REPRESENT A DETAIL THAT IS APPROPRIATE FOR A SPECIFIC PROJECT. PRODUCTS AND ACCESSORIES PROVIDED BY CASCADIA MUST BE CONFIRMED FOR SPECIFIC PROJECTS.

NOTE: ANCHOR CLIPS AT HEAD, SILL AND JAMBS ARE INTERMITTENT

| | | | |
|---|---|----------|-------------------------------|
| CASCADIA WINDOWS LTD. #101-5350 275TH STREET LANGLEY, BC, CANADA V4W 0C1 | DRAWING TITLE: UNIVERSAL SERIES - SLIDE-IN DOOR JAMB RAINSCREEN WALL ASSEMBLY, EXTERIOR INSULATION | | DRAWING NO.: D-1.03 |
| | SCALE: 6" = 1'-0" | PATENTED | DATE: 26 NOVEMBER, 2018 |



SLIDE-IN DOOR SIDELITE

PATENTED

DRAFT

NOTE: THIS DRAFT DETAIL IS FOR GENERAL ARRANGEMENT PURPOSES ONLY, AND DOES NOT NECESSARILY REPRESENT A DETAIL THAT IS APPROPRIATE FOR A SPECIFIC PROJECT. PRODUCTS AND ACCESSORIES PROVIDED BY CASCADIA MUST BE CONFIRMED FOR SPECIFIC PROJECTS.

NOTE: ANCHOR CLIPS AT HEAD, SILL AND JAMBS ARE INTERMITTENT

CASCADIA WINDOWS LTD.
 #101-5350 275TH STREET
 LANGLEY, BC, CANADA V4W 0C1

DRAWING TITLE: **UNIVERSAL SERIES - SLIDE-IN DOOR HEAD**
RAINSREEN WALL ASSEMBLY, EXTERIOR INSULATION

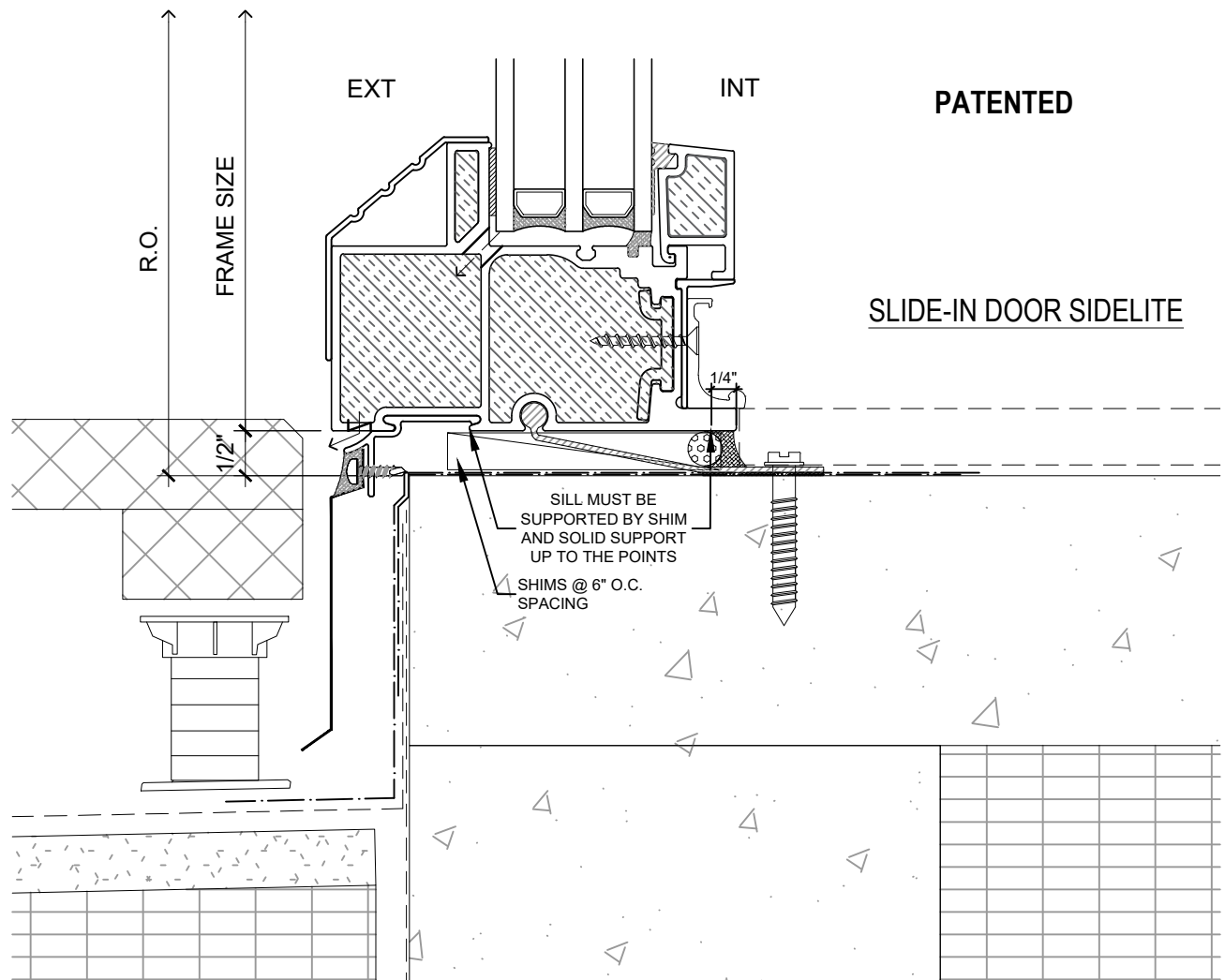
DRAWING NO.: **D-1.04**

SCALE: 6" = 1'-0"

PATENTED

DATE: 26 NOVEMBER, 2018

DRAWN BY: CP



DRAFT

NOTE: THIS DRAFT DETAIL IS FOR GENERAL ARRANGEMENT PURPOSES ONLY, AND DOES NOT NECESSARILY REPRESENT A DETAIL THAT IS APPROPRIATE FOR A SPECIFIC PROJECT. PRODUCTS AND ACCESSORIES PROVIDED BY CASCADIA MUST BE CONFIRMED FOR SPECIFIC PROJECTS.

NOTE: ANCHOR CLIPS AT HEAD, SILL AND JAMBS ARE INTERMITTENT

CASCADIA WINDOWS LTD.
 #101-5350 275TH STREET
 LANGLEY, BC, CANADA V4W 0C1

DRAWING TITLE: **UNIVERSAL SERIES - SLIDE-IN DOOR SILL**
RAINSREEN WALL ASSEMBLY, EXTERIOR INSULATION

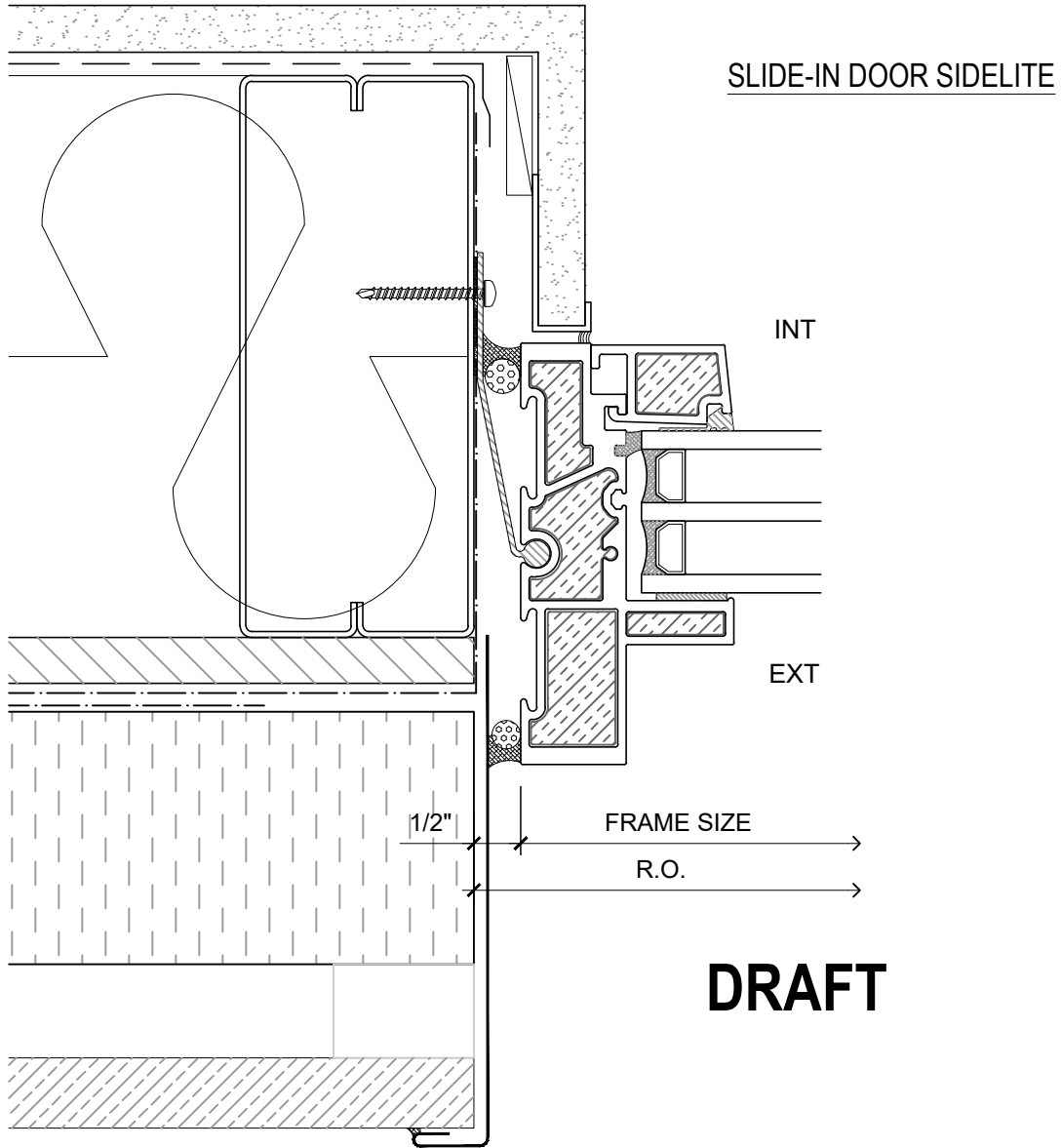
DRAWING NO.: **D-1.05**

SCALE: 6" = 1'-0"

PATENTED

DATE: 26 NOVEMBER, 2018

DRAWN BY: CP



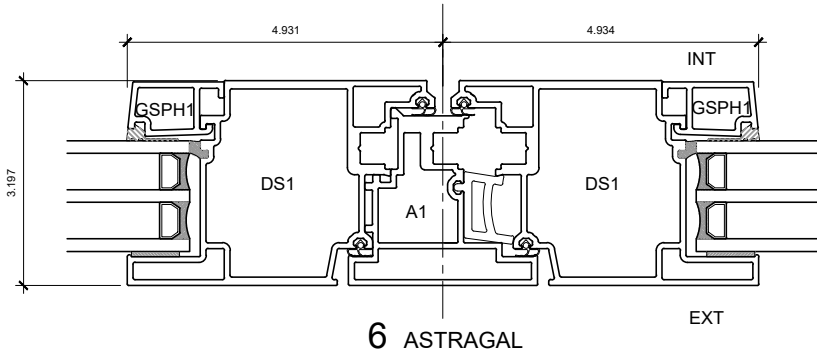
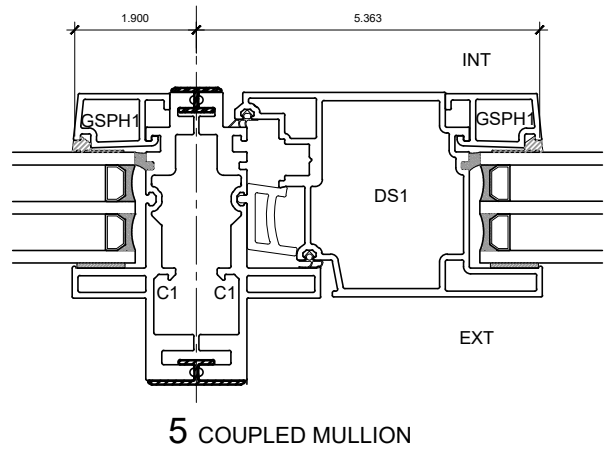
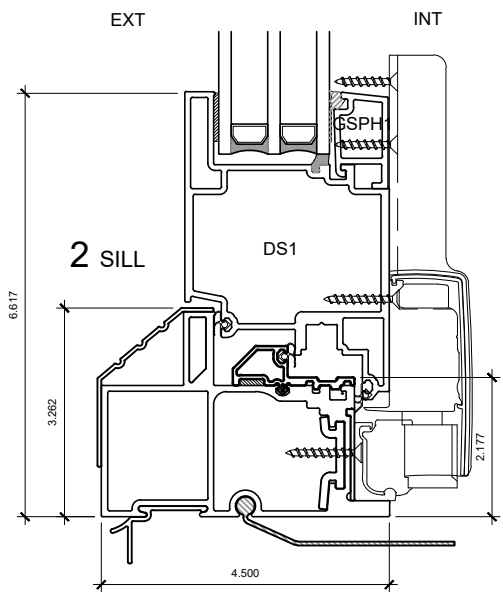
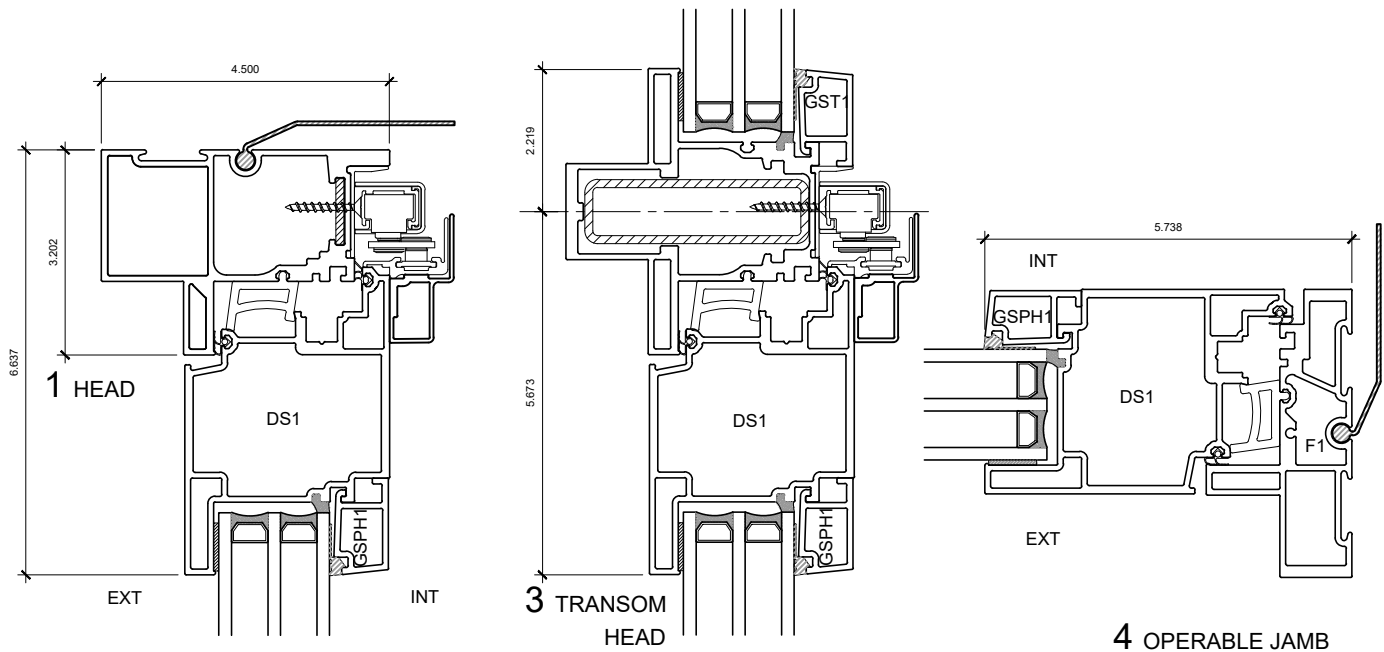
DRAFT

PATENTED

NOTE: THIS DRAFT DETAIL IS FOR GENERAL ARRANGEMENT PURPOSES ONLY, AND DOES NOT NECESSARILY REPRESENT A DETAIL THAT IS APPROPRIATE FOR A SPECIFIC PROJECT. PRODUCTS AND ACCESSORIES PROVIDED BY CASCADIA MUST BE CONFIRMED FOR SPECIFIC PROJECTS.

NOTE: ANCHOR CLIPS AT HEAD, SILL AND JAMBS ARE INTERMITTENT

| | | | |
|---|---|----------|-------------------------------|
| CASCADIA WINDOWS LTD. #101-5350 275TH STREET LANGLEY, BC, CANADA V4W 0C1 | DRAWING TITLE: UNIVERSAL SERIES - SLIDE-IN DOOR JAMB RAINSCREEN WALL ASSEMBLY, EXTERIOR INSULATION | | DRAWING NO.: D-1.06 |
| | SCALE: 6" = 1'-0" | PATENTED | DATE: 26 NOVEMBER, 2018 |



DRAFT

PATENTED

NOTE: THIS DRAFT DETAIL IS FOR GENERAL ARRANGEMENT PURPOSES ONLY, AND DOES NOT NECESSARILY REPRESENT A DETAIL THAT IS APPROPRIATE FOR A SPECIFIC PROJECT. PRODUCTS AND ACCESSORIES PROVIDED BY CASCADIA MUST BE CONFIRMED FOR SPECIFIC PROJECTS.

NOTE: ANCHOR CLIPS AT HEAD, SILL AND JAMBS ARE INTERMITTENT

CASCADIA WINDOWS LTD.
 #101-5350 275TH STREET
 LANGLEY, BC, CANADA V4W 0C1

DRAWING TITLE: UNIVERSAL SERIES - SLIDE-IN DOOR
PRODUCT DRAWING

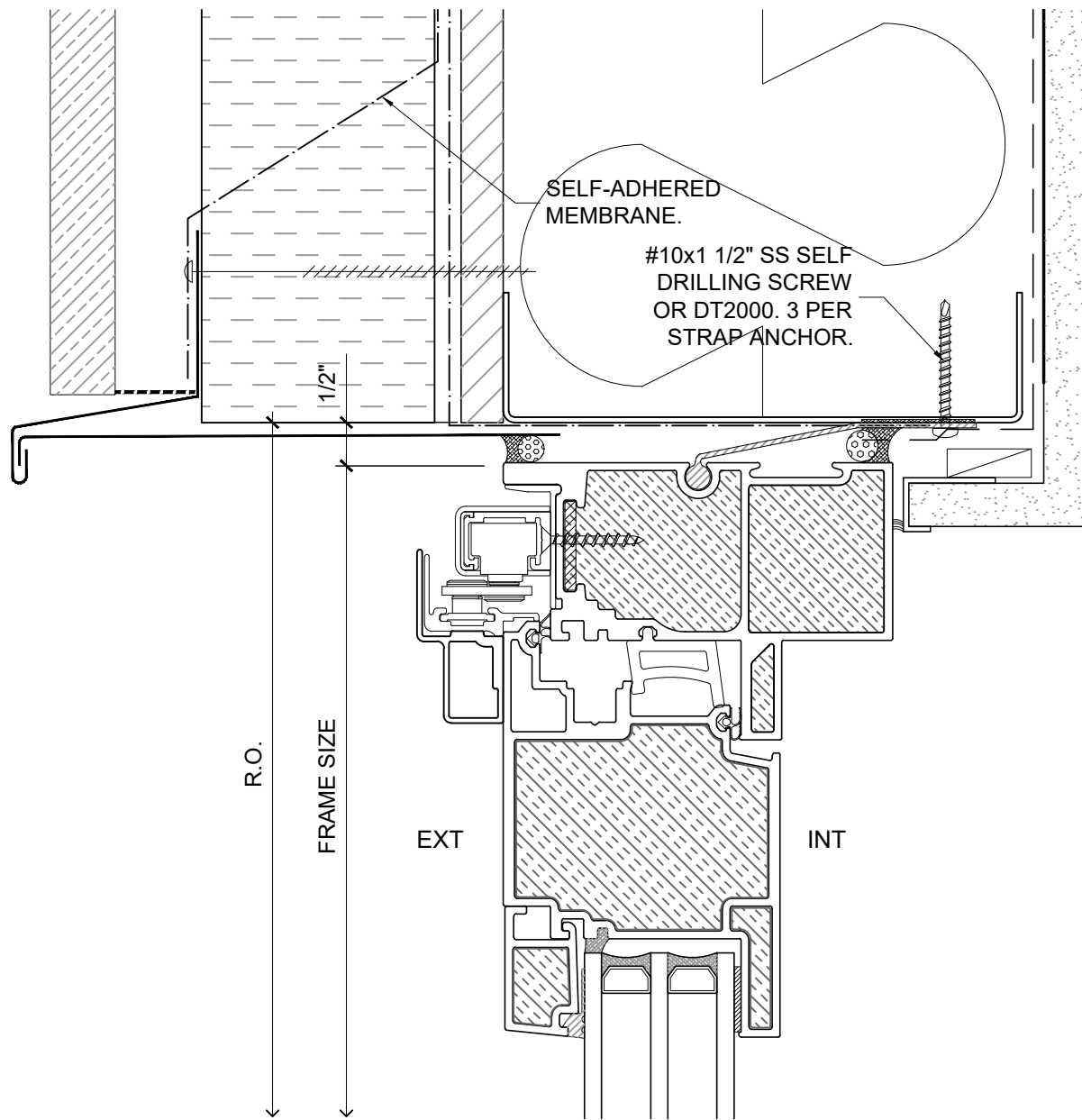
DRAWING NO.: D-2.01

SCALE: 4" = 1'-0"

PATENTED

DATE: 26 NOVEMBER, 2018

DRAWN BY: CP



SLIDE-OUT DOOR

PATENTED

DRAFT

NOTE: THIS DRAFT DETAIL IS FOR GENERAL ARRANGEMENT PURPOSES ONLY, AND DOES NOT NECESSARILY REPRESENT A DETAIL THAT IS APPROPRIATE FOR A SPECIFIC PROJECT. PRODUCTS AND ACCESSORIES PROVIDED BY CASCADIA MUST BE CONFIRMED FOR SPECIFIC PROJECTS.

NOTE: ANCHOR CLIPS AT HEAD AND JAMBS ARE INTERMITTENT

CASCADIA WINDOWS LTD.
 #101-5350 275TH STREET
 LANGLEY, BC, CANADA V4W 0C1

DRAWING TITLE: UNIVERSAL SERIES \odot - SLIDE-OUT DOOR HEAD
 RAINSCREEN WALL ASSEMBLY, EXTERIOR INSULATION

DRAWING NO.:
 D-1.01

SCALE: 6" = 1'-0"

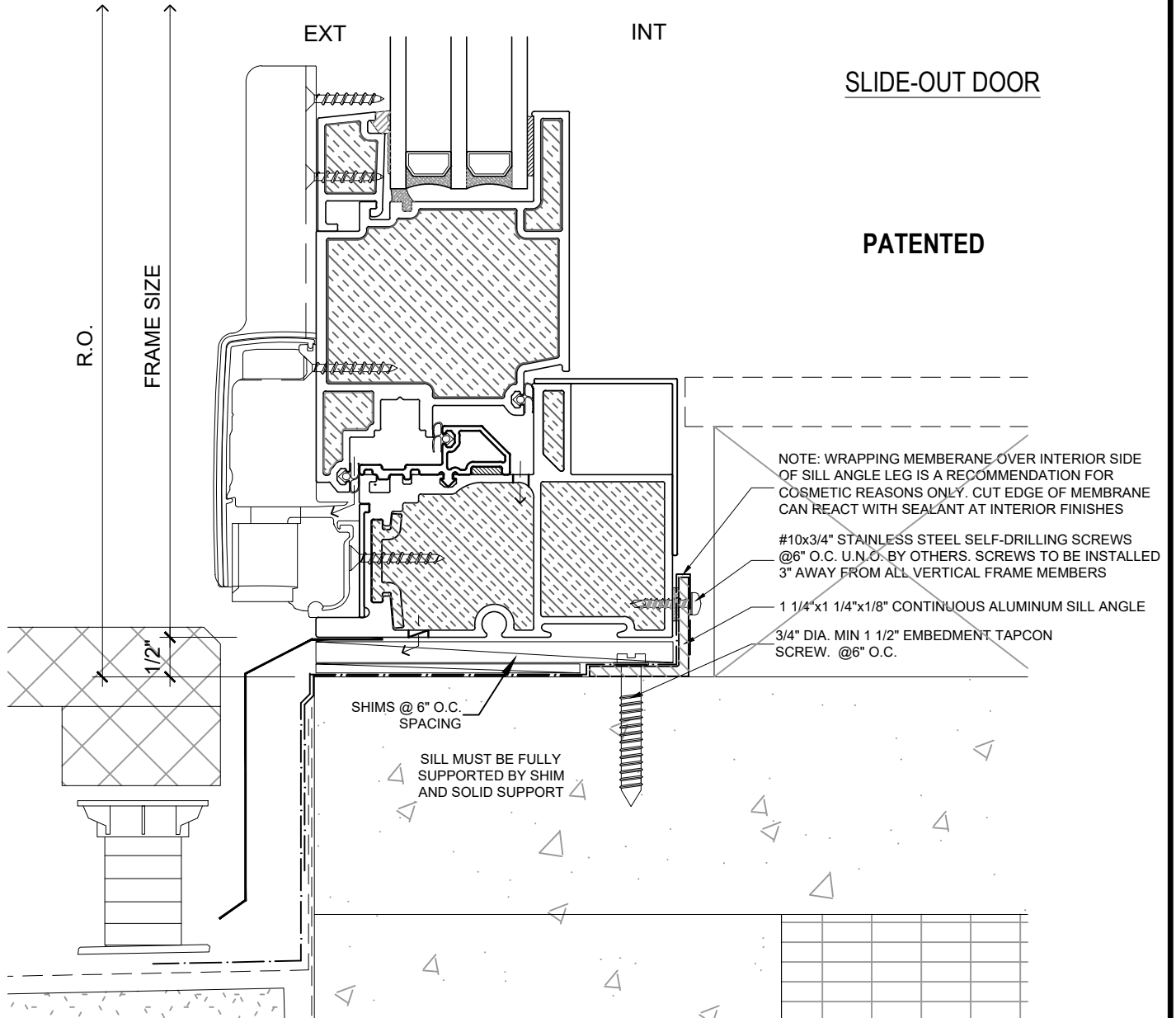
PATENTED

DATE: 9 JANUARY, 2019

DRAWN BY: CP

SLIDE-OUT DOOR

PATENTED



NOTE: WRAPPING MEMBRANE OVER INTERIOR SIDE OF SILL ANGLE LEG IS A RECOMMENDATION FOR COSMETIC REASONS ONLY. CUT EDGE OF MEMBRANE CAN REACT WITH SEALANT AT INTERIOR FINISHES

#10x3/4" STAINLESS STEEL SELF-DRILLING SCREWS @6" O.C. U.N.O. BY OTHERS. SCREWS TO BE INSTALLED 3" AWAY FROM ALL VERTICAL FRAME MEMBERS

1 1/4"x1 1/4"x1/8" CONTINUOUS ALUMINUM SILL ANGLE

3/4" DIA. MIN 1 1/2" EMBEDMENT TAPCON SCREW. @6" O.C.

SHIMS @ 6" O.C. SPACING

SILL MUST BE FULLY SUPPORTED BY SHIM AND SOLID SUPPORT

DRAFT

NOTE: THIS DRAFT DETAIL IS FOR GENERAL ARRANGEMENT PURPOSES ONLY, AND DOES NOT NECESSARILY REPRESENT A DETAIL THAT IS APPROPRIATE FOR A SPECIFIC PROJECT. PRODUCTS AND ACCESSORIES PROVIDED BY CASCADIA MUST BE CONFIRMED FOR SPECIFIC PROJECTS.

NOTE: ANCHOR CLIPS AT HEAD AND JAMBS ARE INTERMITTENT

CASCADIA WINDOWS LTD.
 #101-5350 275TH STREET
 LANGLEY, BC, CANADA V4W 0C1

DRAWING TITLE: **UNIVERSAL SERIES® - SLIDE-OUT DOOR SILL**
 RAINSCREEN WALL ASSEMBLY, EXTERIOR INSULATION

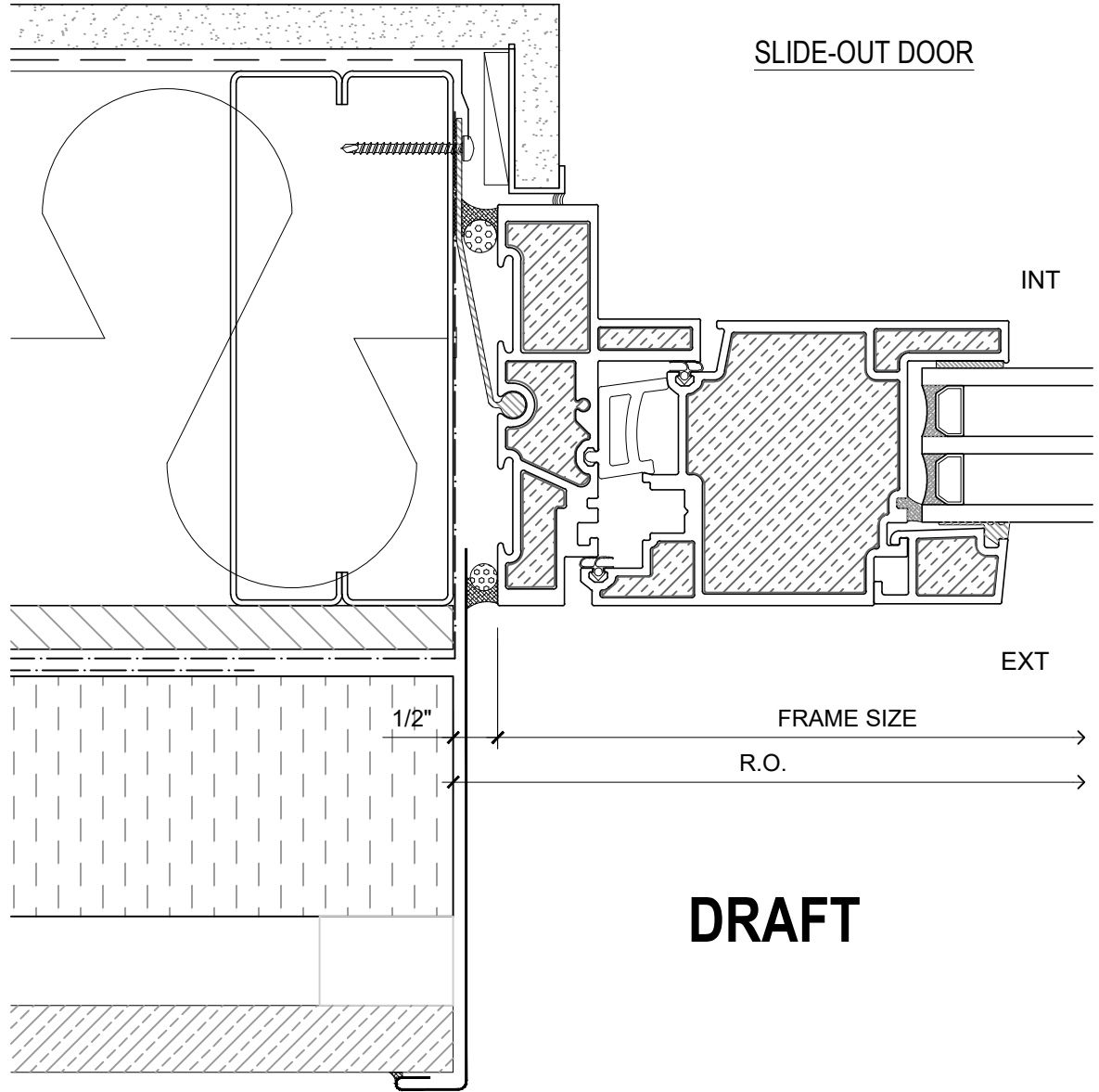
DRAWING NO.: **D-1.02**

SCALE: 6" = 1'-0"

PATENTED

DATE: 9 JANUARY, 2019

DRAWN BY: CP



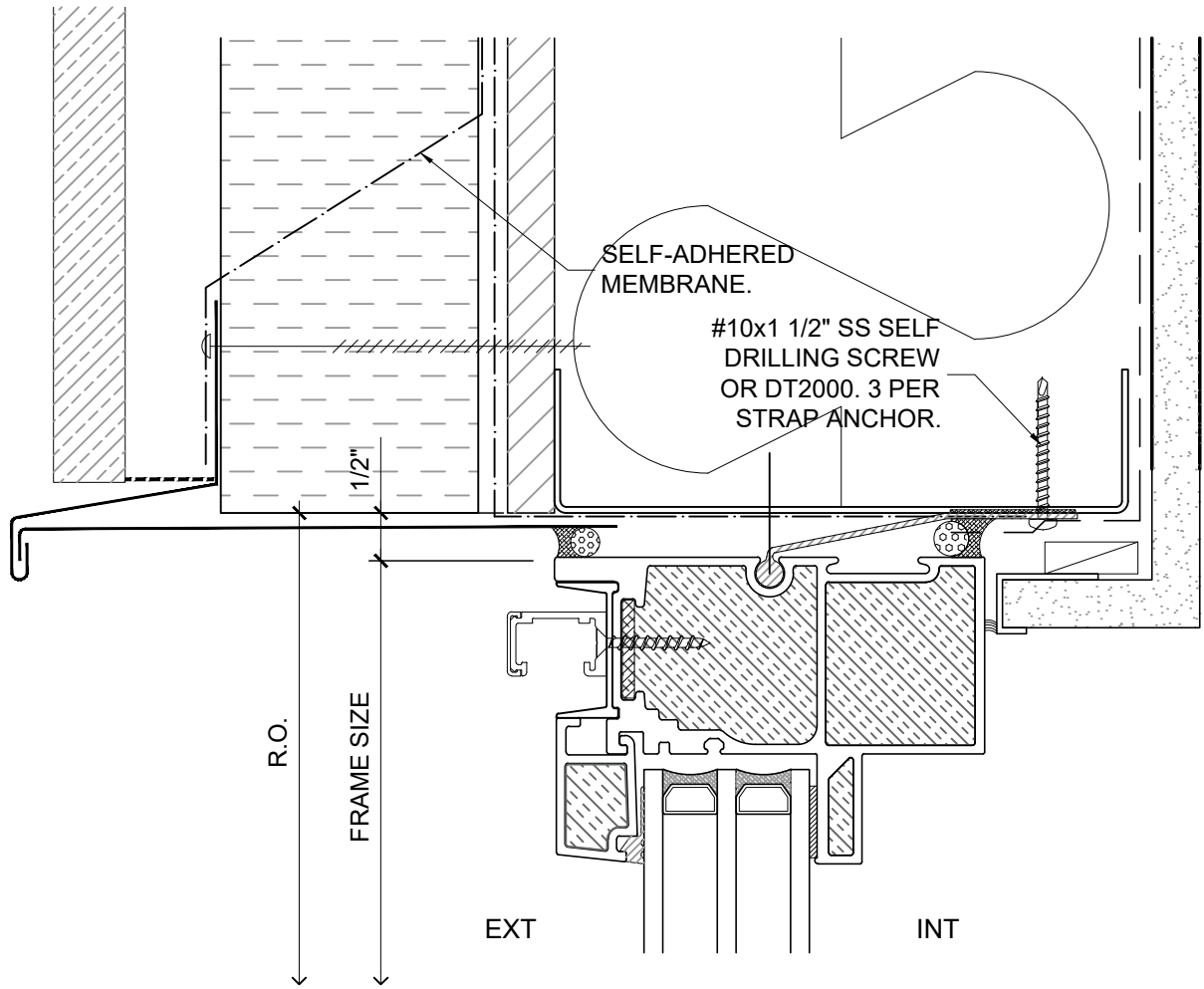
DRAFT

PATENTED

NOTE: THIS DRAFT DETAIL IS FOR GENERAL ARRANGEMENT PURPOSES ONLY, AND DOES NOT NECESSARILY REPRESENT A DETAIL THAT IS APPROPRIATE FOR A SPECIFIC PROJECT. PRODUCTS AND ACCESSORIES PROVIDED BY CASCADIA MUST BE CONFIRMED FOR SPECIFIC PROJECTS.

NOTE: ANCHOR CLIPS AT HEAD AND JAMBS ARE INTERMITTENT

| | | | |
|---|--|----------|-------------------------------|
| CASCADIA WINDOWS LTD. #101-5350 275TH STREET LANGLEY, BC, CANADA V4W 0C1 | DRAWING TITLE: UNIVERSAL SERIES © - SLIDE-OUT DOOR JAMB RAINSCREEN WALL ASSEMBLY, EXTERIOR INSULATION | | DRAWING NO.: D-1.03 |
| | SCALE: 6" = 1'-0" | PATENTED | DATE: 9 JANUARY, 2019 |



SLIDE-OUT DOOR SIDELITE

PATENTED

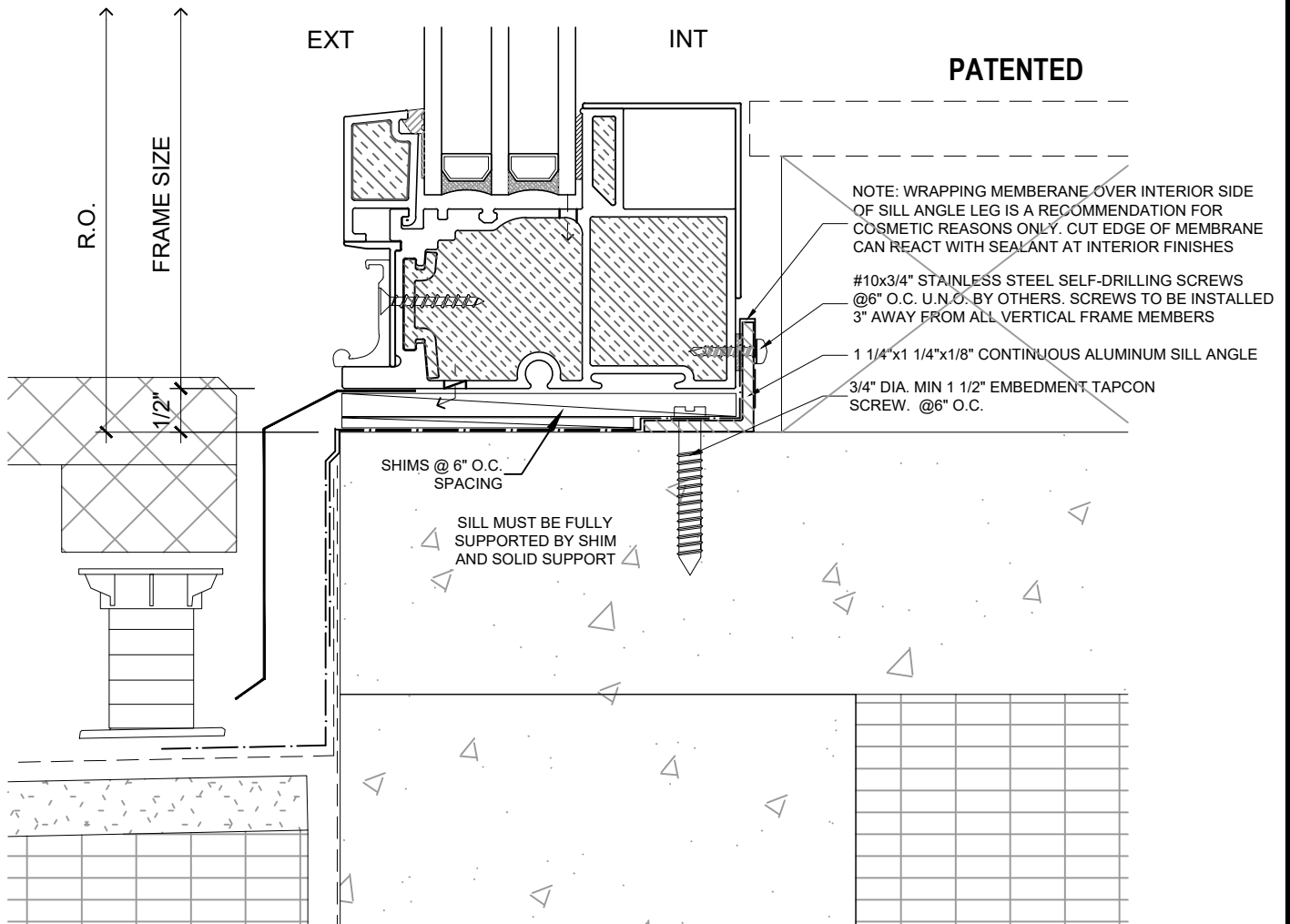
DRAFT

NOTE: THIS DRAFT DETAIL IS FOR GENERAL ARRANGEMENT PURPOSES ONLY, AND DOES NOT NECESSARILY REPRESENT A DETAIL THAT IS APPROPRIATE FOR A SPECIFIC PROJECT. PRODUCTS AND ACCESSORIES PROVIDED BY CASCADIA MUST BE CONFIRMED FOR SPECIFIC PROJECTS.

NOTE: ANCHOR CLIPS AT HEAD AND JAMBS ARE INTERMITTENT

| | | | |
|---|---|----------|-------------------------------|
| CASCADIA WINDOWS LTD. #101-5350 275TH STREET LANGLEY, BC, CANADA V4W 0C1 | DRAWING TITLE: UNIVERSAL SERIES © - SLIDE-OUT DOOR HEAD RAINSREEN WALL ASSEMBLY, EXTERIOR INSULATION | | DRAWING NO.: D-1.04 |
| | SCALE: 6" = 1'-0" | PATENTED | DATE: 9 JANUARY, 2019 |

SLIDE-OUT DOOR SIDELITE



DRAFT

NOTE: THIS DRAFT DETAIL IS FOR GENERAL ARRANGEMENT PURPOSES ONLY, AND DOES NOT NECESSARILY REPRESENT A DETAIL THAT IS APPROPRIATE FOR A SPECIFIC PROJECT. PRODUCTS AND ACCESSORIES PROVIDED BY CASCADIA MUST BE CONFIRMED FOR SPECIFIC PROJECTS.

NOTE: ANCHOR CLIPS AT HEAD AND JAMBS ARE INTERMITTENT

CASCADIA WINDOWS LTD.
#101-5350 275TH STREET
LANGLEY, BC, CANADA V4W 0C1

DRAWING TITLE: **UNIVERSAL SERIES © - SLIDE-OUT DOOR SILL**
RAINSREEN WALL ASSEMBLY, EXTERIOR INSULATION

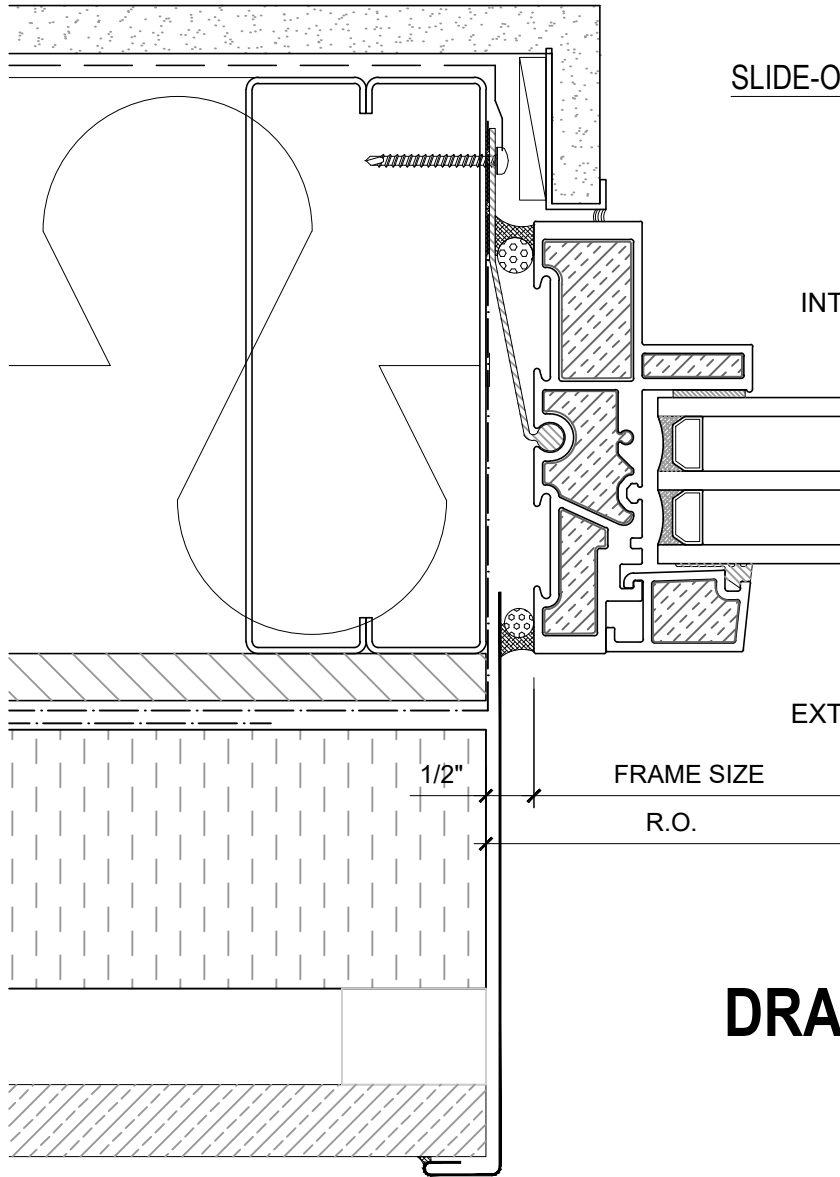
DRAWING NO.:
D-1.05

SCALE: 6" = 1'-0"

PATENTED

DATE: 9 JANUARY, 2019

DRAWN BY: CP



SLIDE-OUT DOOR SIDELITE

INT

EXT

FRAME SIZE

R.O.

1/2"

DRAFT

PATENTED

NOTE: THIS DRAFT DETAIL IS FOR GENERAL ARRANGEMENT PURPOSES ONLY, AND DOES NOT NECESSARILY REPRESENT A DETAIL THAT IS APPROPRIATE FOR A SPECIFIC PROJECT. PRODUCTS AND ACCESSORIES PROVIDED BY CASCADIA MUST BE CONFIRMED FOR SPECIFIC PROJECTS.

NOTE: ANCHOR CLIPS AT HEAD AND JAMBS ARE INTERMITTENT

CASCADIA WINDOWS LTD.
 #101-5350 275TH STREET
 LANGLEY, BC, CANADA V4W 0C1

DRAWING TITLE: **UNIVERSAL SERIES © - SLIDE-OUT DOOR JAMB**
RAINSCREEN WALL ASSEMBLY, EXTERIOR INSULATION

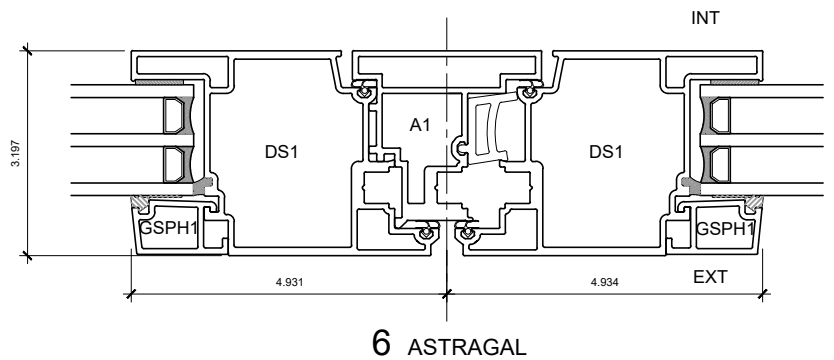
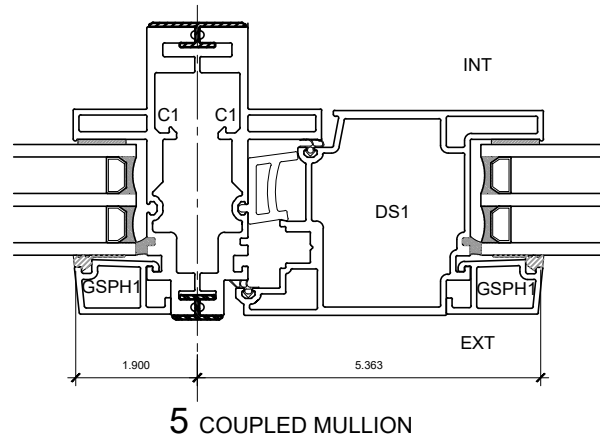
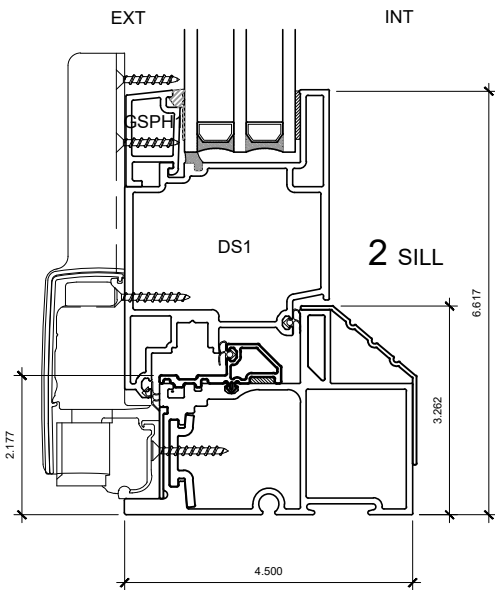
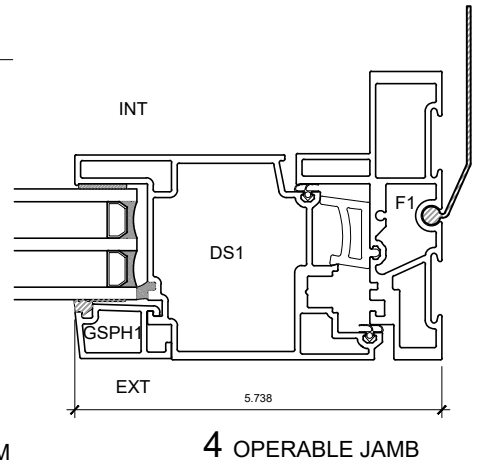
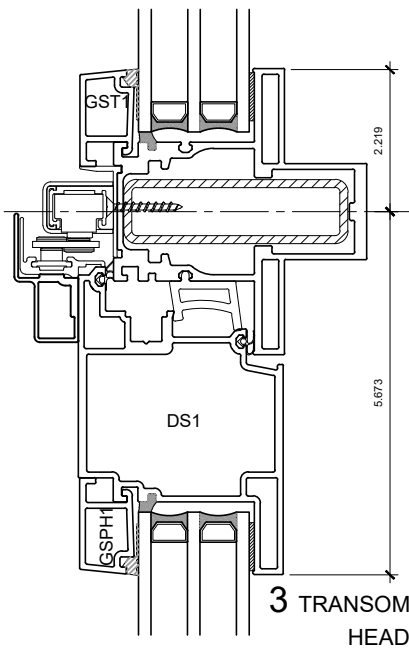
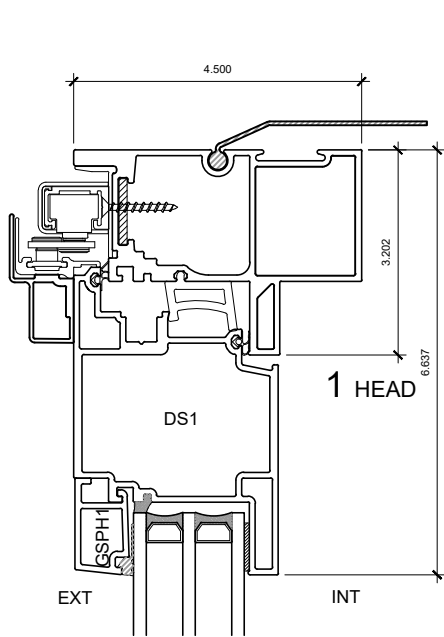
DRAWING NO.:
D-1.06

SCALE: 6" = 1'-0"

PATENTED

DATE: 9 JANUARY, 2019

DRAWN BY: CP



DRAFT

PATENTED

6 ASTRAGAL

NOTE: THIS DRAFT DETAIL IS FOR GENERAL ARRANGEMENT PURPOSES ONLY, AND DOES NOT NECESSARILY REPRESENT A DETAIL THAT IS APPROPRIATE FOR A SPECIFIC PROJECT. PRODUCTS AND ACCESSORIES PROVIDED BY CASCADIA MUST BE CONFIRMED FOR SPECIFIC PROJECTS.

NOTE: ANCHOR CLIPS AT HEAD AND JAMBS ARE INTERMITTENT

CASCADIA WINDOWS LTD.
#101-5350 275TH STREET
LANGLEY, BC, CANADA V4W 0C1

DRAWING
TITLE:

UNIVERSAL SERIES © - SLIDE-OUT DOOR
PRODUCT DRAWING

DRAWING NO.:

D-2.01

SCALE: 4" = 1'-0"

PATENTED

DATE: 9 JANUARY, 2019

DRAWN BY: CP