

SELF-ADHERED
MEMBRANE.

#10x1 1/2" SS SELF
DRILLING SCREW
OR DT2000. 3 PER
STRAP ANCHOR.

1/2"

R.O.

FRAME SIZE

EXT

INT

TRIPLE GLAZED
SLIDE-IN DOOR

PATENTED

NOTE: THIS DRAFT DETAIL IS FOR GENERAL ARRANGEMENT PURPOSES ONLY, AND DOES NOT NECESSARILY REPRESENT A DETAIL THAT IS APPROPRIATE FOR A SPECIFIC PROJECT. PRODUCTS AND ACCESSORIES PROVIDED BY CASCADIA MUST BE CONFIRMED FOR SPECIFIC PROJECTS.

NOTE: ANCHOR CLIPS AT HEAD, SILL AND JAMBS ARE INTERMITTENT

CASCADIA WINDOWS LTD.
#101-5350 275TH STREET
LANGLEY, BC, CANADA V4W 0C1

DRAWING TITLE: UNIVERSAL SERIES © - SLIDE-IN DOOR HEAD
RAINSCREEN WALL ASSEMBLY, EXTERIOR INSULATION

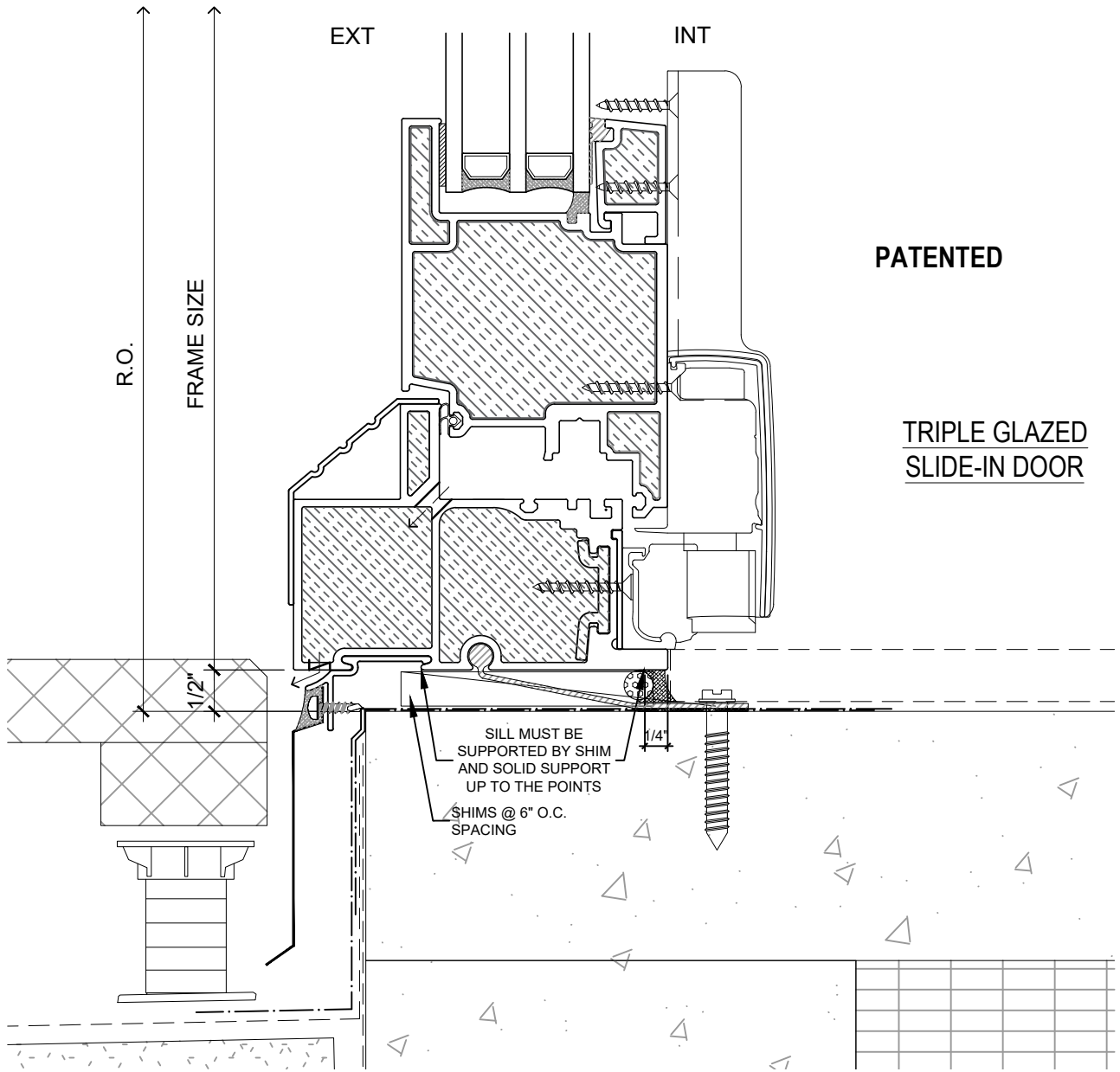
DRAWING NO.:
D-1.01

SCALE: 6" = 1'-0"

PATENTED

DATE: 26 AUGUST, 2020

DRAWN BY: CP



PATENTED

**TRIPLE GLAZED
SLIDE-IN DOOR**

SILL MUST BE
SUPPORTED BY SHIM
AND SOLID SUPPORT
UP TO THE POINTS
SHIMS @ 6" O.C.
SPACING

1/4"

NOTE: THIS DRAFT DETAIL IS FOR GENERAL ARRANGEMENT PURPOSES ONLY, AND DOES NOT NECESSARILY REPRESENT A DETAIL THAT IS APPROPRIATE FOR A SPECIFIC PROJECT. PRODUCTS AND ACCESSORIES PROVIDED BY CASCADIA MUST BE CONFIRMED FOR SPECIFIC PROJECTS.

NOTE: ANCHOR CLIPS AT HEAD, SILL AND JAMBS ARE INTERMITTENT

CASCADIA WINDOWS LTD.
#101-5350 275TH STREET
LANGLEY, BC, CANADA V4W 0C1

DRAWING TITLE: **UNIVERSAL SERIES [®] - SLIDE-IN DOOR SILL**
RAINSCREEN WALL ASSEMBLY, EXTERIOR INSULATION

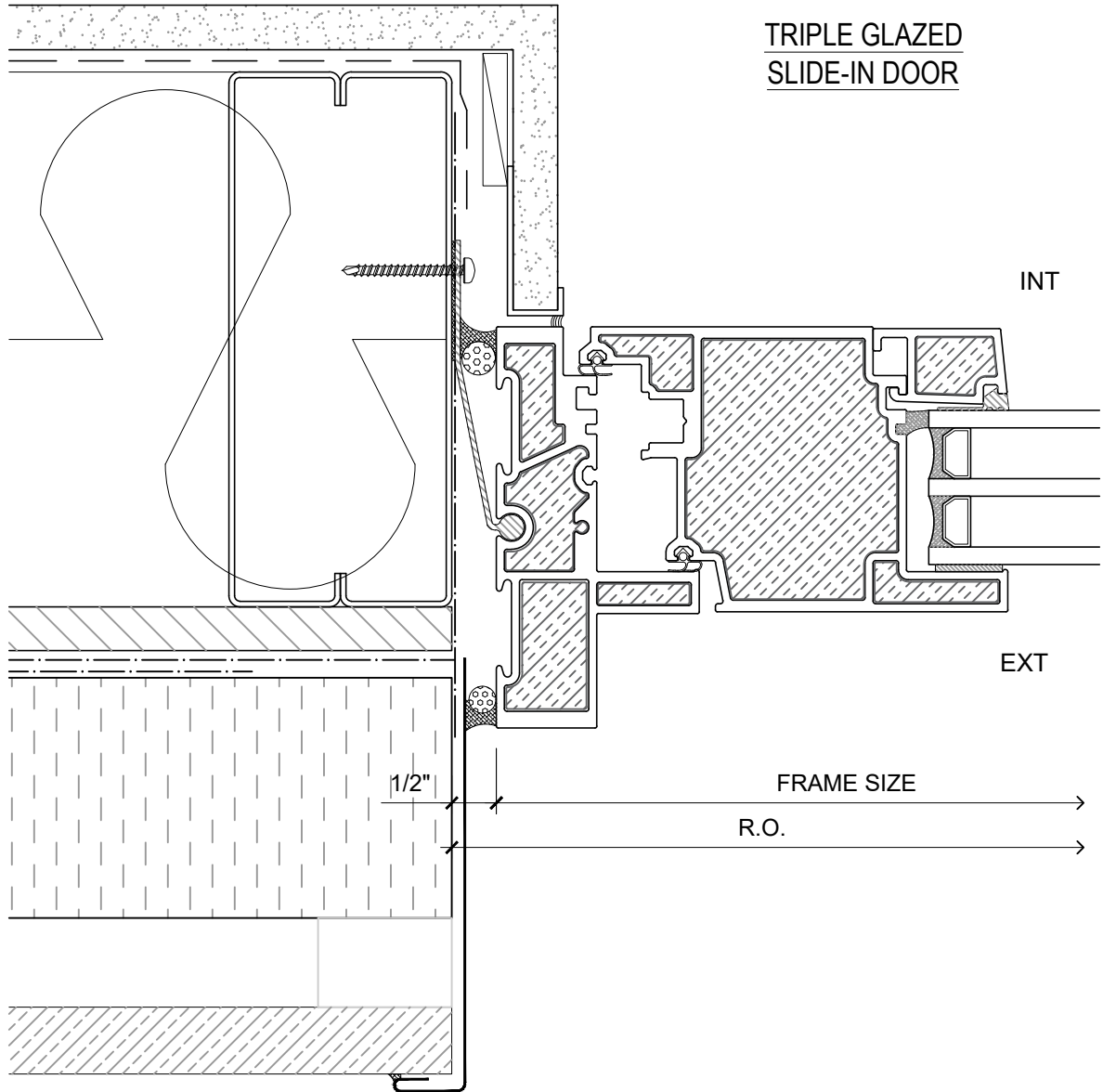
DRAWING NO.:
D-1.02

SCALE: 6" = 1'-0"

PATENTED

DATE: 26 AUGUST, 2020

DRAWN BY: CP



PATENTED

NOTE: THIS DRAFT DETAIL IS FOR GENERAL ARRANGEMENT PURPOSES ONLY, AND DOES NOT NECESSARILY REPRESENT A DETAIL THAT IS APPROPRIATE FOR A SPECIFIC PROJECT. PRODUCTS AND ACCESSORIES PROVIDED BY CASCADIA MUST BE CONFIRMED FOR SPECIFIC PROJECTS.

NOTE: ANCHOR CLIPS AT HEAD, SILL AND JAMBS ARE INTERMITTENT

CASCADIA WINDOWS LTD.
 #101-5350 275TH STREET
 LANGLEY, BC, CANADA V4W 0C1

DRAWING TITLE: **UNIVERSAL SERIES © - SLIDE-IN DOOR JAMB**
RAINSCREEN WALL ASSEMBLY, EXTERIOR INSULATION

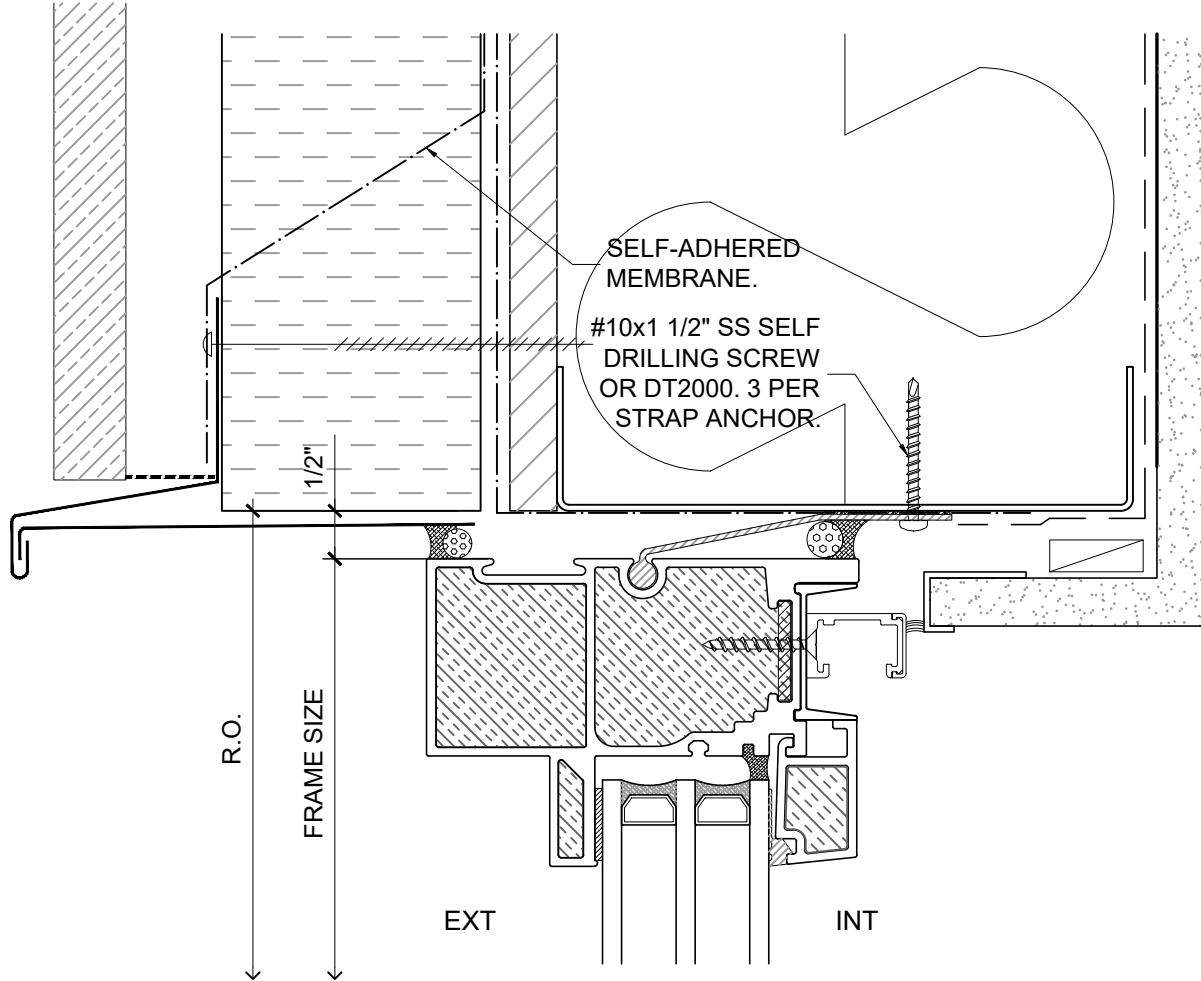
DRAWING NO.:
D-1.03

SCALE: 6" = 1'-0"

PATENTED

DATE: 26 AUGUST, 2020

DRAWN BY: CP



**TRIPLE GLAZED
SLIDE-IN DOOR SIDELITE**

PATENTED

NOTE: THIS DRAFT DETAIL IS FOR GENERAL ARRANGEMENT PURPOSES ONLY, AND DOES NOT NECESSARILY REPRESENT A DETAIL THAT IS APPROPRIATE FOR A SPECIFIC PROJECT. PRODUCTS AND ACCESSORIES PROVIDED BY CASCADIA MUST BE CONFIRMED FOR SPECIFIC PROJECTS.

NOTE: ANCHOR CLIPS AT HEAD, SILL AND JAMBS ARE INTERMITTENT

CASCADIA WINDOWS LTD.
#101-5350 275TH STREET
LANGLEY, BC, CANADA V4W 0C1

DRAWING TITLE: **UNIVERSAL SERIES © - SLIDE-IN DOOR HEAD**
RAINSCREEN WALL ASSEMBLY, EXTERIOR INSULATION

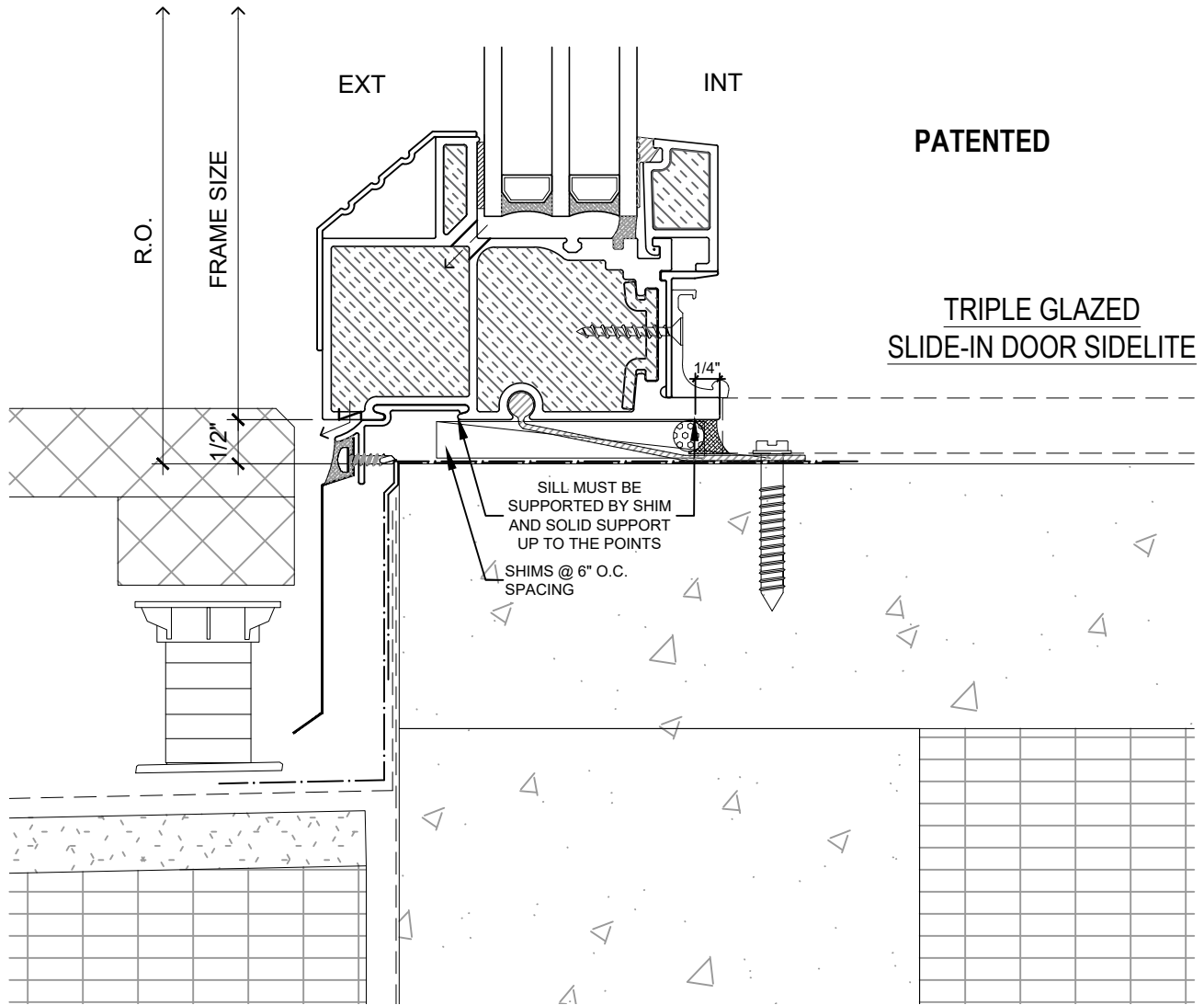
DRAWING NO.:
D-1.04

SCALE: 6" = 1'-0"

PATENTED

DATE: 26 AUGUST, 2020

DRAWN BY: CP



PATENTED

**TRIPLE GLAZED
SLIDE-IN DOOR SIDELITE**

SILL MUST BE
SUPPORTED BY SHIM
AND SOLID SUPPORT
UP TO THE POINTS

SHIMS @ 6" O.C.
SPACING

NOTE: THIS DRAFT DETAIL IS FOR GENERAL ARRANGEMENT PURPOSES ONLY, AND DOES NOT NECESSARILY REPRESENT A DETAIL THAT IS APPROPRIATE FOR A SPECIFIC PROJECT. PRODUCTS AND ACCESSORIES PROVIDED BY CASCADIA MUST BE CONFIRMED FOR SPECIFIC PROJECTS.

NOTE: ANCHOR CLIPS AT HEAD, SILL AND JAMBS ARE INTERMITTENT

CASCADIA WINDOWS LTD.
#101-5350 275TH STREET
LANGLEY, BC, CANADA V4W 0C1

DRAWING TITLE: **UNIVERSAL SERIES © - SLIDE-IN DOOR SILL
RAINSCREEN WALL ASSEMBLY, EXTERIOR INSULATION**

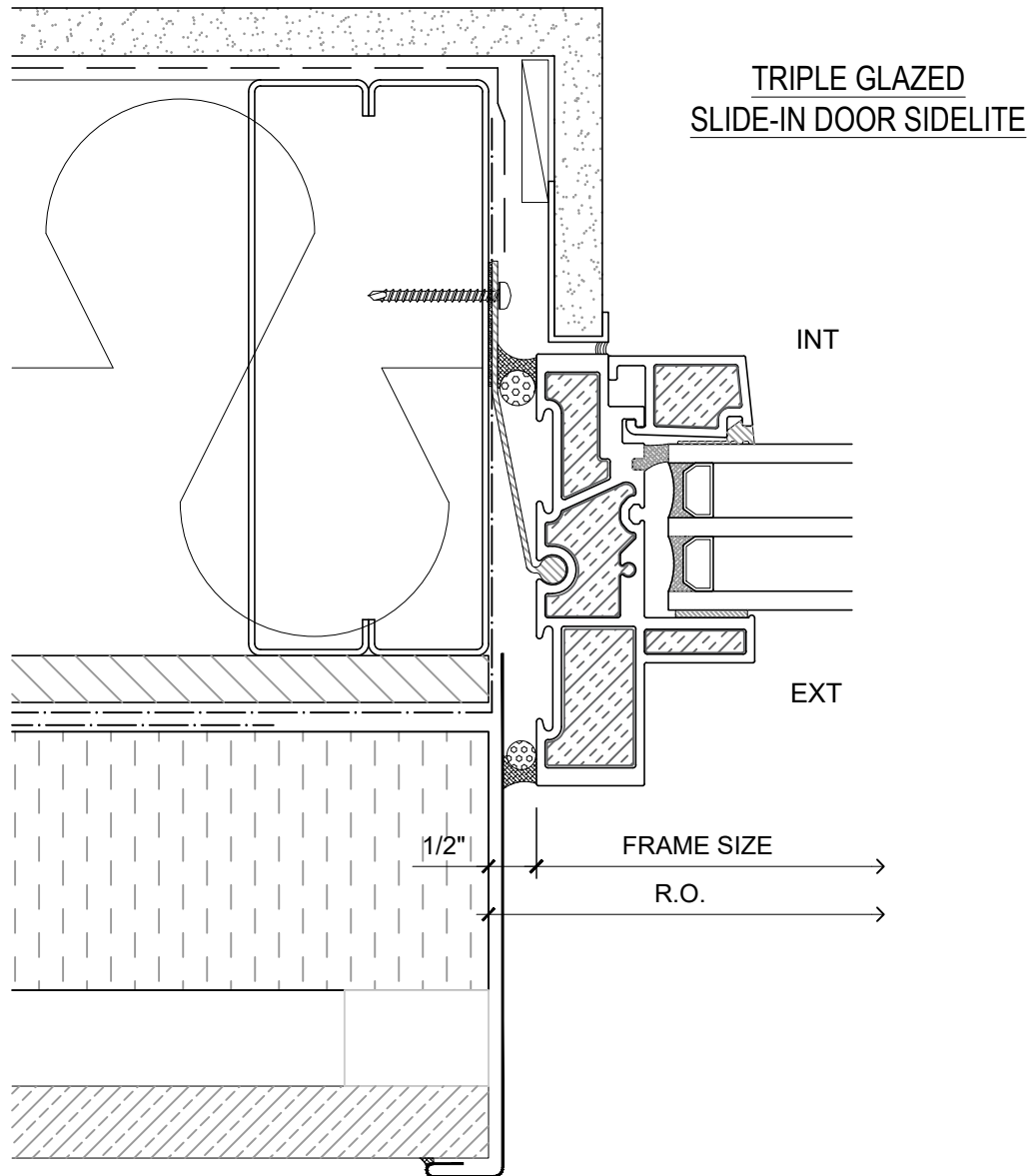
DRAWING NO.: **D-1.05**

SCALE: 6" = 1'-0"

PATENTED

DATE: 26 AUGUST, 2020

DRAWN BY: CP



PATENTED

NOTE: THIS DRAFT DETAIL IS FOR GENERAL ARRANGEMENT PURPOSES ONLY, AND DOES NOT NECESSARILY REPRESENT A DETAIL THAT IS APPROPRIATE FOR A SPECIFIC PROJECT. PRODUCTS AND ACCESSORIES PROVIDED BY CASCADIA MUST BE CONFIRMED FOR SPECIFIC PROJECTS.

NOTE: ANCHOR CLIPS AT HEAD, SILL AND JAMBS ARE INTERMITTENT

CASCADIA WINDOWS LTD.
 #101-5350 275TH STREET
 LANGLEY, BC, CANADA V4W 0C1

DRAWING TITLE: **UNIVERSAL SERIES © - SLIDE-IN DOOR JAMB
 RAINSCREEN WALL ASSEMBLY, EXTERIOR INSULATION**

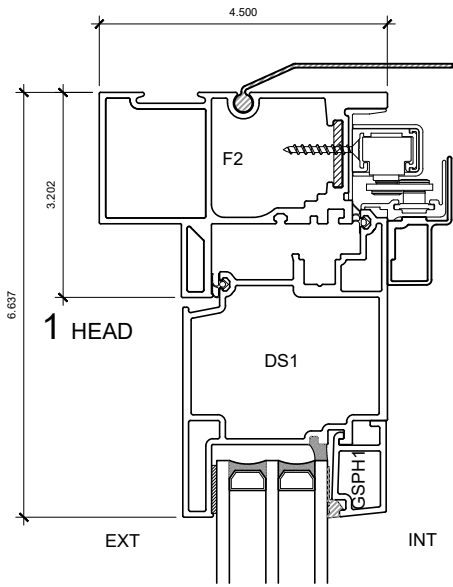
DRAWING NO.:
D-1.06

SCALE: 6" = 1'-0"

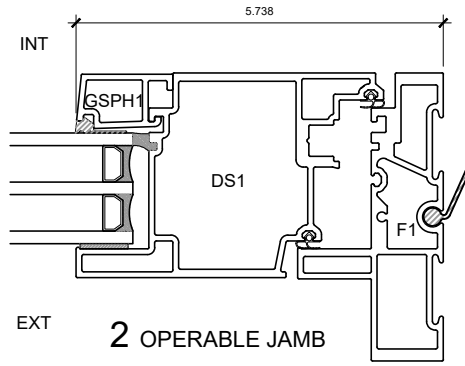
PATENTED

DATE: 26 AUGUST, 2020

DRAWN BY: CP



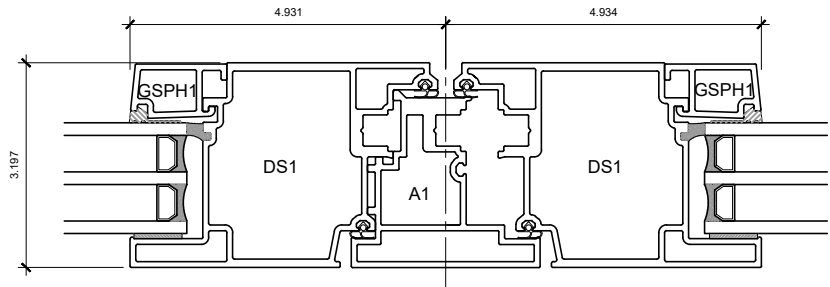
1 HEAD



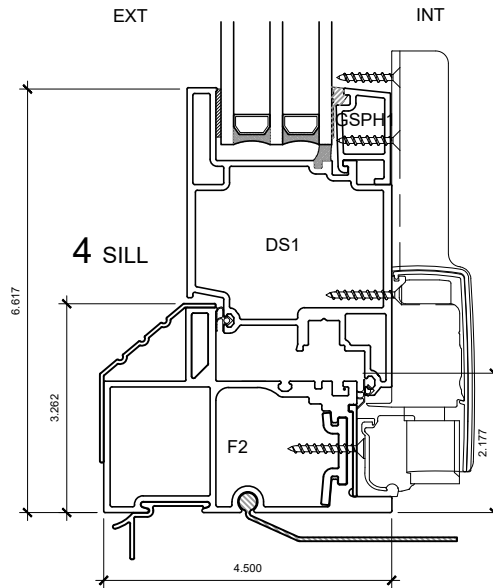
2 OPERABLE JAMB

**TRIPLE GLAZED
SLIDE-IN DOOR**

PATENTED



3 ASTRAGAL



4 SILL

NOTE: THIS DRAFT DETAIL IS FOR GENERAL ARRANGEMENT PURPOSES ONLY, AND DOES NOT NECESSARILY REPRESENT A DETAIL THAT IS APPROPRIATE FOR A SPECIFIC PROJECT. PRODUCTS AND ACCESSORIES PROVIDED BY CASCADIA MUST BE CONFIRMED FOR SPECIFIC PROJECTS.

NOTE: ANCHOR CLIPS AT HEAD, SILL AND JAMBS ARE INTERMITTENT

CASCADIA WINDOWS LTD.
#101-5350 275TH STREET
LANGLEY, BC, CANADA V4W 0C1

DRAWING
TITLE:

UNIVERSAL SERIES ® - SLIDE-IN DOOR
PRODUCT DRAWING

DRAWING NO.:

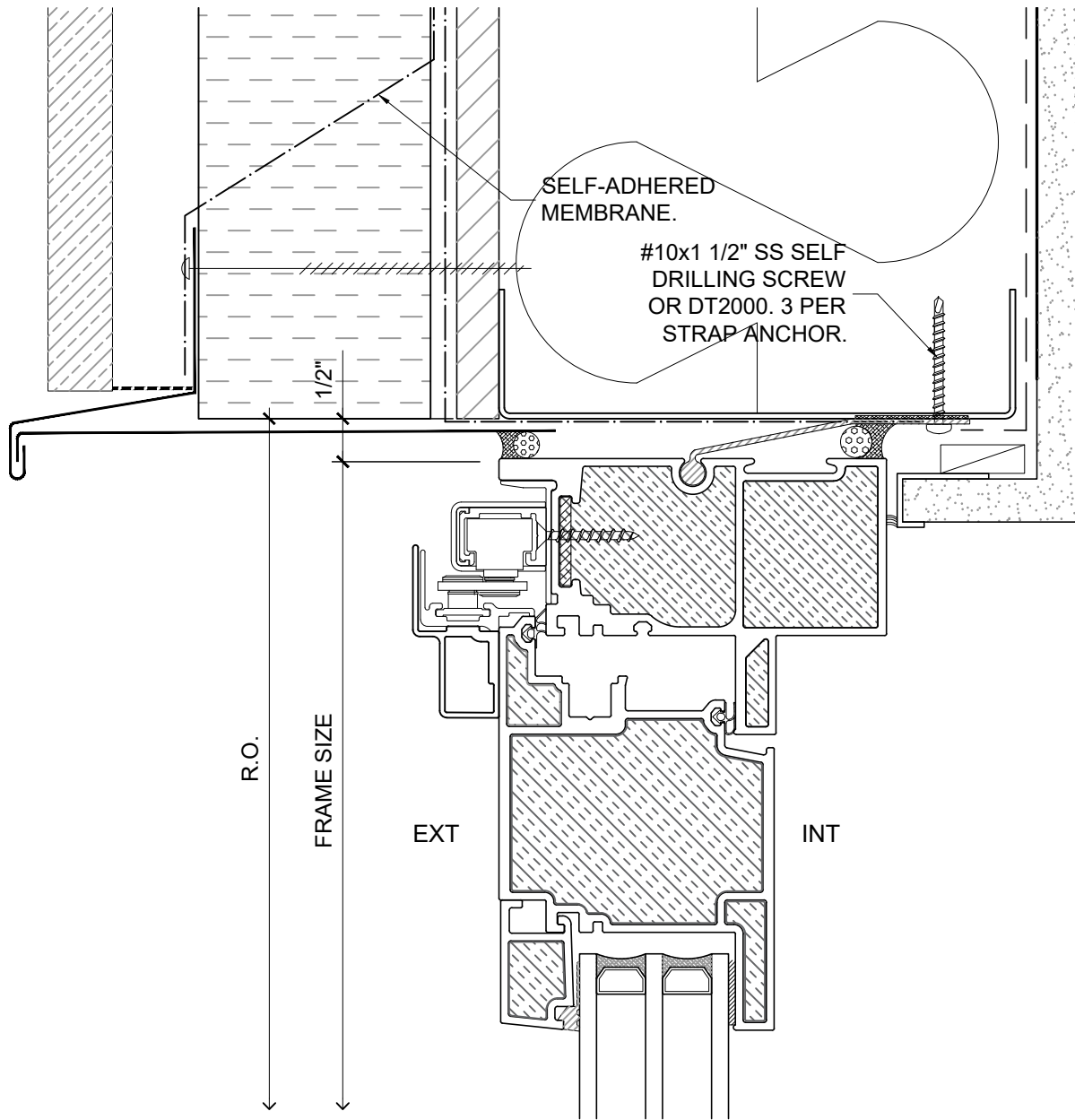
D-2.01

SCALE: 4" = 1'-0"

PATENTED

DATE: 26 AUGUST, 2020

DRAWN BY: CP



SLIDE-OUT DOOR - TRIPLE GLAZED

PATENTED

NOTE: THIS DRAFT DETAIL IS FOR GENERAL ARRANGEMENT PURPOSES ONLY, AND DOES NOT NECESSARILY REPRESENT A DETAIL THAT IS APPROPRIATE FOR A SPECIFIC PROJECT. PRODUCTS AND ACCESSORIES PROVIDED BY CASCADIA MUST BE CONFIRMED FOR SPECIFIC PROJECTS.

NOTE: ANCHOR CLIPS AT HEAD AND JAMBS ARE INTERMITTENT

CASCADIA WINDOWS LTD.
 #101-5350 275TH STREET
 LANGLEY, BC, CANADA V4W 0C1

DRAWING TITLE: **UNIVERSAL SERIES $\text{\textcircled{D}}$ - SLIDE-OUT DOOR HEAD**
RAINSCREEN WALL ASSEMBLY, EXTERIOR INSULATION

DRAWING NO.:
D-1.01

SCALE: 6" = 1'-0"

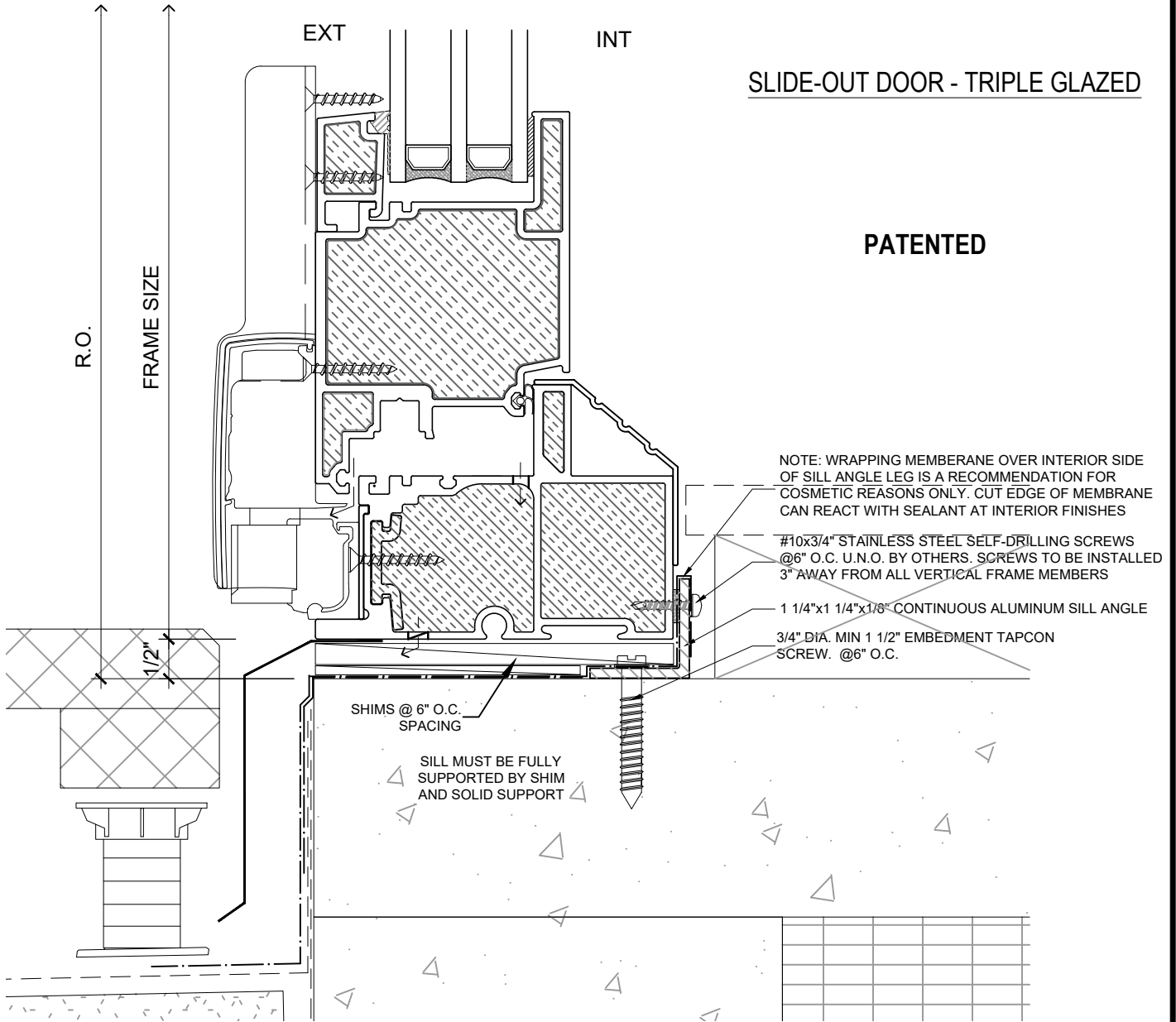
PATENTED

DATE: 24 AUGUST, 2020

DRAWN BY: CH

SLIDE-OUT DOOR - TRIPLE GLAZED

PATENTED



NOTE: WRAPPING MEMBERANE OVER INTERIOR SIDE OF SILL ANGLE LEG IS A RECOMMENDATION FOR COSMETIC REASONS ONLY. CUT EDGE OF MEMBRANE CAN REACT WITH SEALANT AT INTERIOR FINISHES

#10x3/4" STAINLESS STEEL SELF-DRILLING SCREWS @6" O.C. U.N.O. BY OTHERS. SCREWS TO BE INSTALLED 3" AWAY FROM ALL VERTICAL FRAME MEMBERS

1 1/4"x1 1/4"x1/8" CONTINUOUS ALUMINUM SILL ANGLE

3/4" DIA. MIN 1 1/2" EMBEDMENT TAPCON SCREW. @6" O.C.

SHIMS @ 6" O.C. SPACING

SILL MUST BE FULLY SUPPORTED BY SHIM AND SOLID SUPPORT

NOTE: THIS DRAFT DETAIL IS FOR GENERAL ARRANGEMENT PURPOSES ONLY, AND DOES NOT NECESSARILY REPRESENT A DETAIL THAT IS APPROPRIATE FOR A SPECIFIC PROJECT. PRODUCTS AND ACCESSORIES PROVIDED BY CASCADIA MUST BE CONFIRMED FOR SPECIFIC PROJECTS.

NOTE: ANCHOR CLIPS AT HEAD AND JAMBS ARE INTERMITTENT

CASCADIA WINDOWS LTD.
#101-5350 275TH STREET
LANGLEY, BC, CANADA V4W 0C1

DRAWING TITLE: **UNIVERSAL SERIES © - SLIDE-OUT DOOR SILL**
RAINSCREEN WALL ASSEMBLY, EXTERIOR INSULATION

DRAWING NO.:
D-1.02

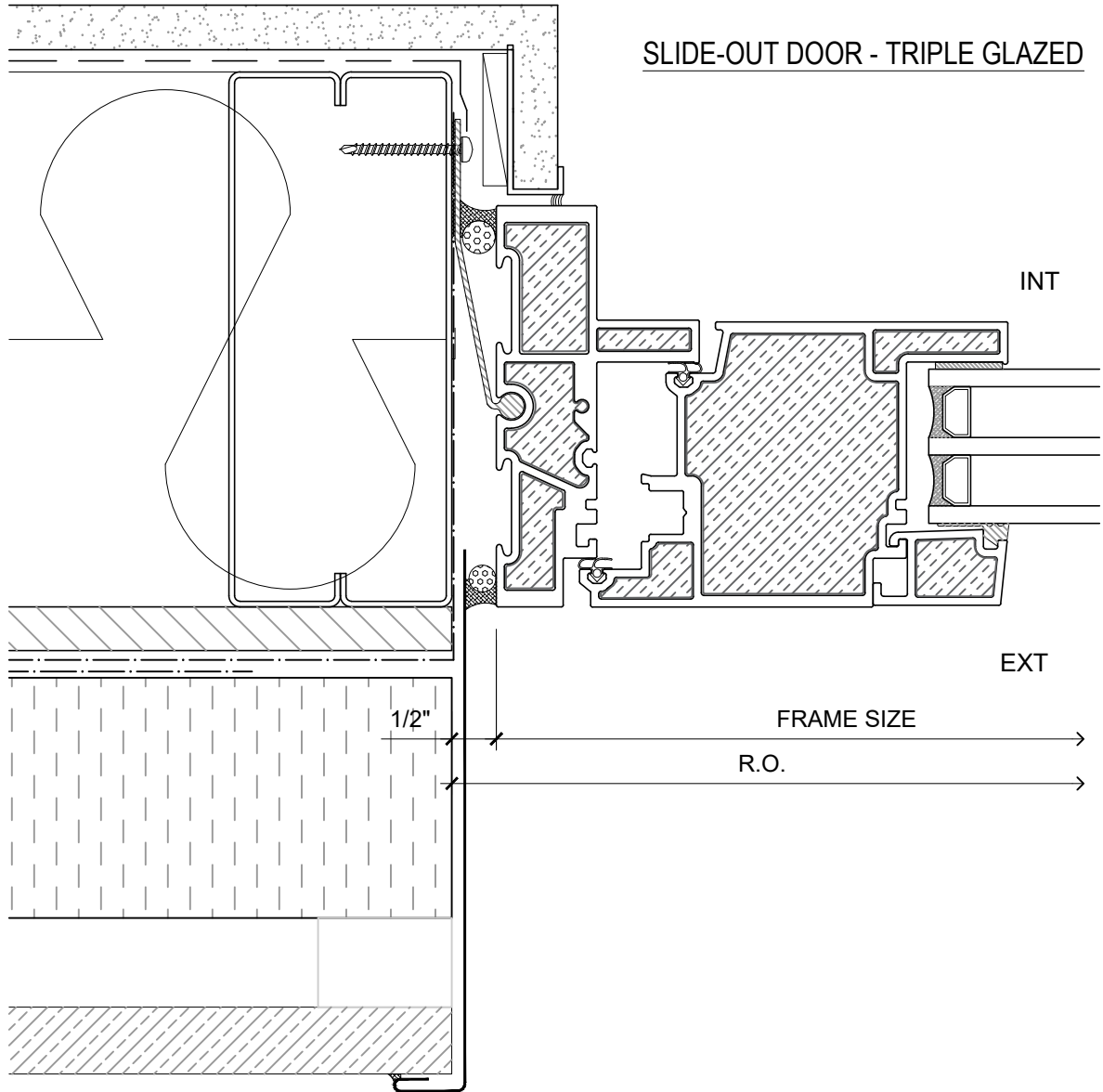
SCALE: 6" = 1'-0"

PATENTED

DATE: 24 AUGUST, 2020

DRAWN BY: CH

SLIDE-OUT DOOR - TRIPLE GLAZED



PATENTED

NOTE: THIS DRAFT DETAIL IS FOR GENERAL ARRANGEMENT PURPOSES ONLY, AND DOES NOT NECESSARILY REPRESENT A DETAIL THAT IS APPROPRIATE FOR A SPECIFIC PROJECT. PRODUCTS AND ACCESSORIES PROVIDED BY CASCADIA MUST BE CONFIRMED FOR SPECIFIC PROJECTS.

NOTE: ANCHOR CLIPS AT HEAD AND JAMBS ARE INTERMITTENT

CASCADIA WINDOWS LTD.
 #101-5350 275TH STREET
 LANGLEY, BC, CANADA V4W 0C1

DRAWING TITLE: **UNIVERSAL SERIES © - SLIDE-OUT DOOR JAMB**
 RAINSCREEN WALL ASSEMBLY, EXTERIOR INSULATION

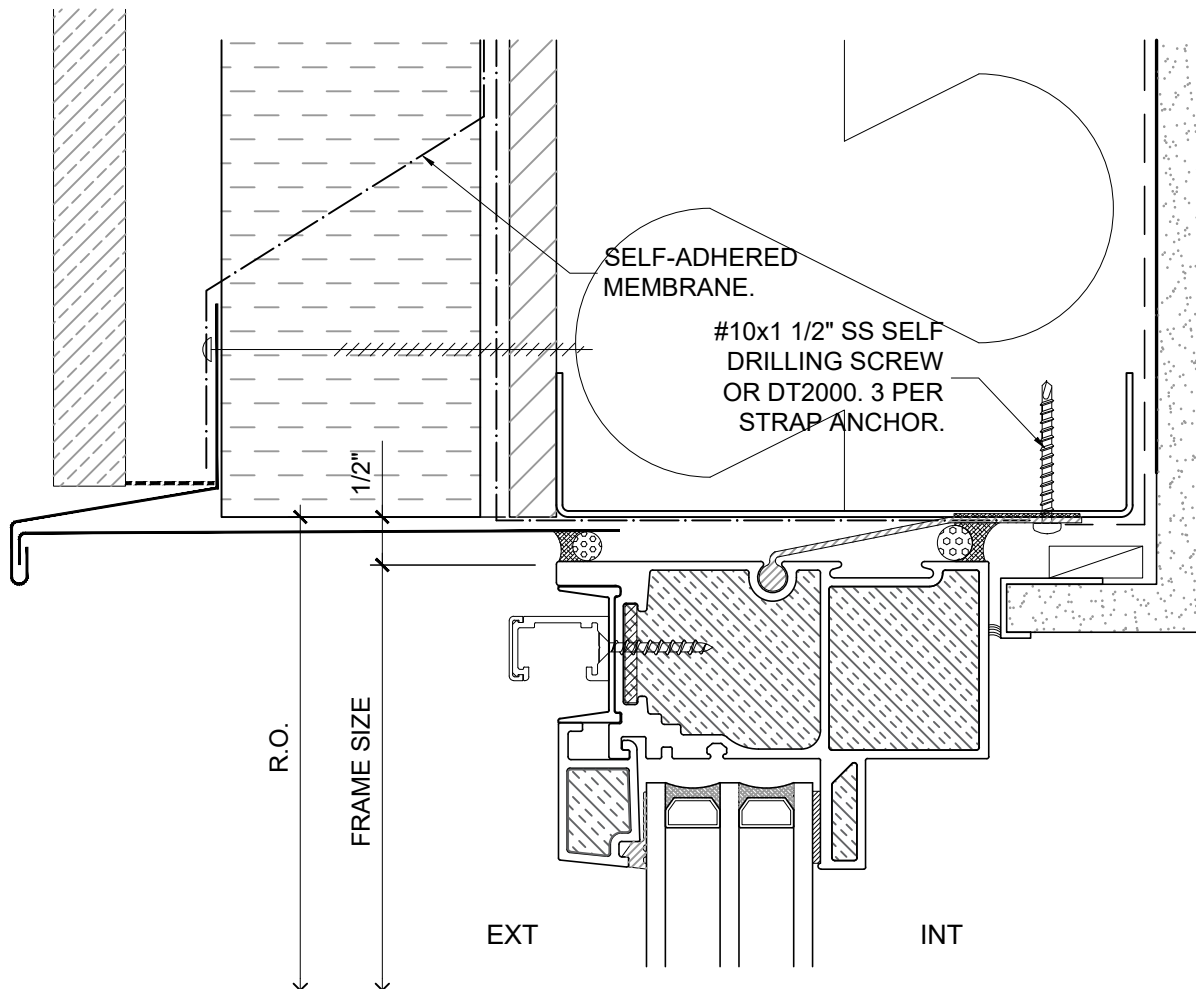
DRAWING NO.: **D-1.03**

SCALE: 6" = 1'-0"

PATENTED

DATE: 24 AUGUST, 2020

DRAWN BY: CH



SLIDE-OUT DOOR SIDELITE - TRIPLE GLAZED

PATENTED

NOTE: THIS DRAFT DETAIL IS FOR GENERAL ARRANGEMENT PURPOSES ONLY, AND DOES NOT NECESSARILY REPRESENT A DETAIL THAT IS APPROPRIATE FOR A SPECIFIC PROJECT. PRODUCTS AND ACCESSORIES PROVIDED BY CASCADIA MUST BE CONFIRMED FOR SPECIFIC PROJECTS.

NOTE: ANCHOR CLIPS AT HEAD AND JAMBS ARE INTERMITTENT

CASCADIA WINDOWS LTD.
 #101-5350 275TH STREET
 LANGLEY, BC, CANADA V4W 0C1

DRAWING TITLE: **UNIVERSAL SERIES © - SLIDE-OUT DOOR HEAD**
RAINSCREEN WALL ASSEMBLY, EXTERIOR INSULATION

DRAWING NO.:
D-1.04

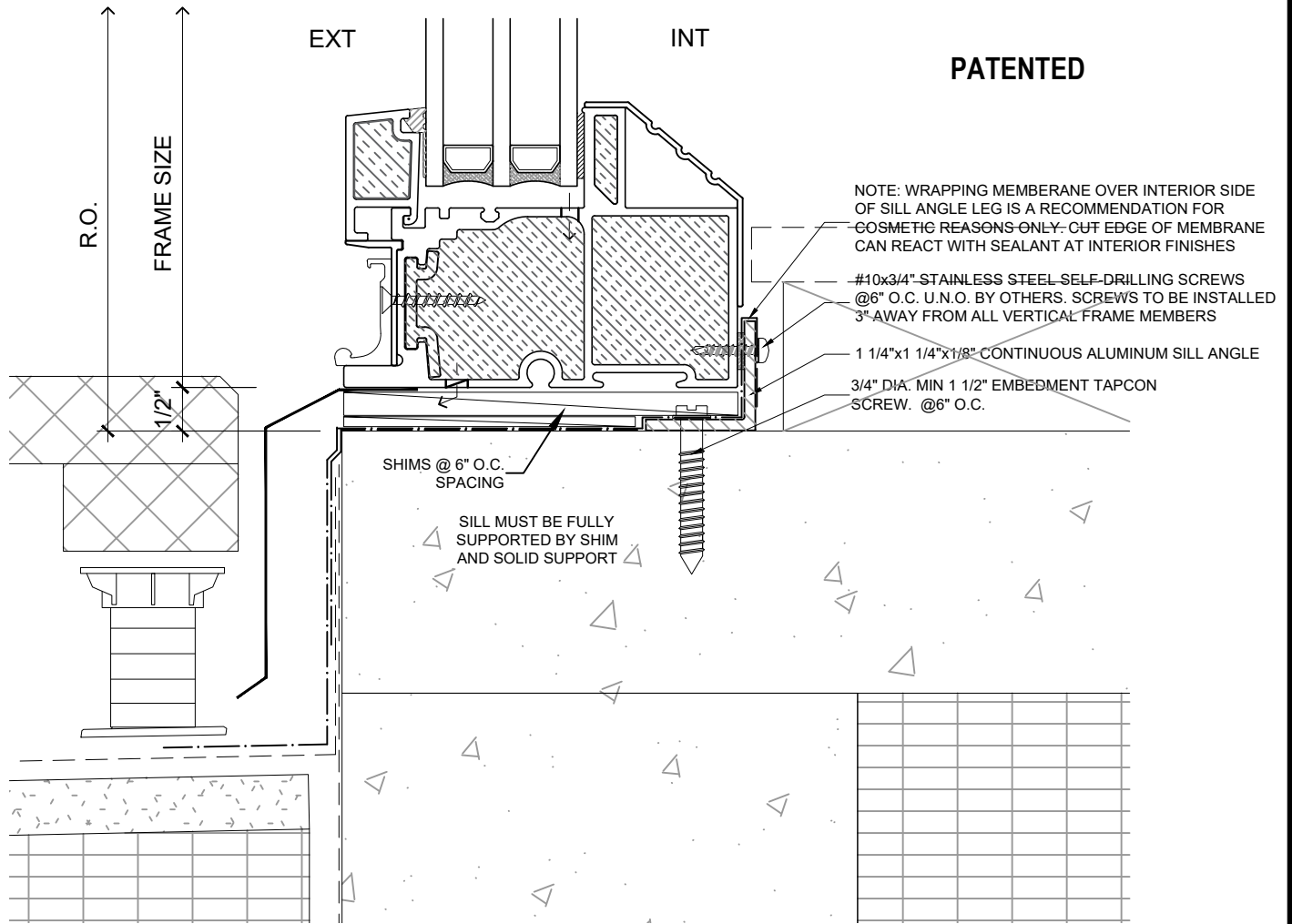
SCALE: 6" = 1'-0"

PATENTED

DATE: 24 AUGUST, 2020

DRAWN BY: CH

SLIDE-OUT DOOR SIDELITE - TRIPLE GLAZED



NOTE: THIS DRAFT DETAIL IS FOR GENERAL ARRANGEMENT PURPOSES ONLY, AND DOES NOT NECESSARILY REPRESENT A DETAIL THAT IS APPROPRIATE FOR A SPECIFIC PROJECT. PRODUCTS AND ACCESSORIES PROVIDED BY CASCADIA MUST BE CONFIRMED FOR SPECIFIC PROJECTS.

NOTE: ANCHOR CLIPS AT HEAD AND JAMBS ARE INTERMITTENT

CASCADIA WINDOWS LTD.
 #101-5350 275TH STREET
 LANGLEY, BC, CANADA V4W 0C1

DRAWING TITLE: **UNIVERSAL SERIES © - SLIDE-OUT DOOR SILL**
RAINSCREEN WALL ASSEMBLY, EXTERIOR INSULATION

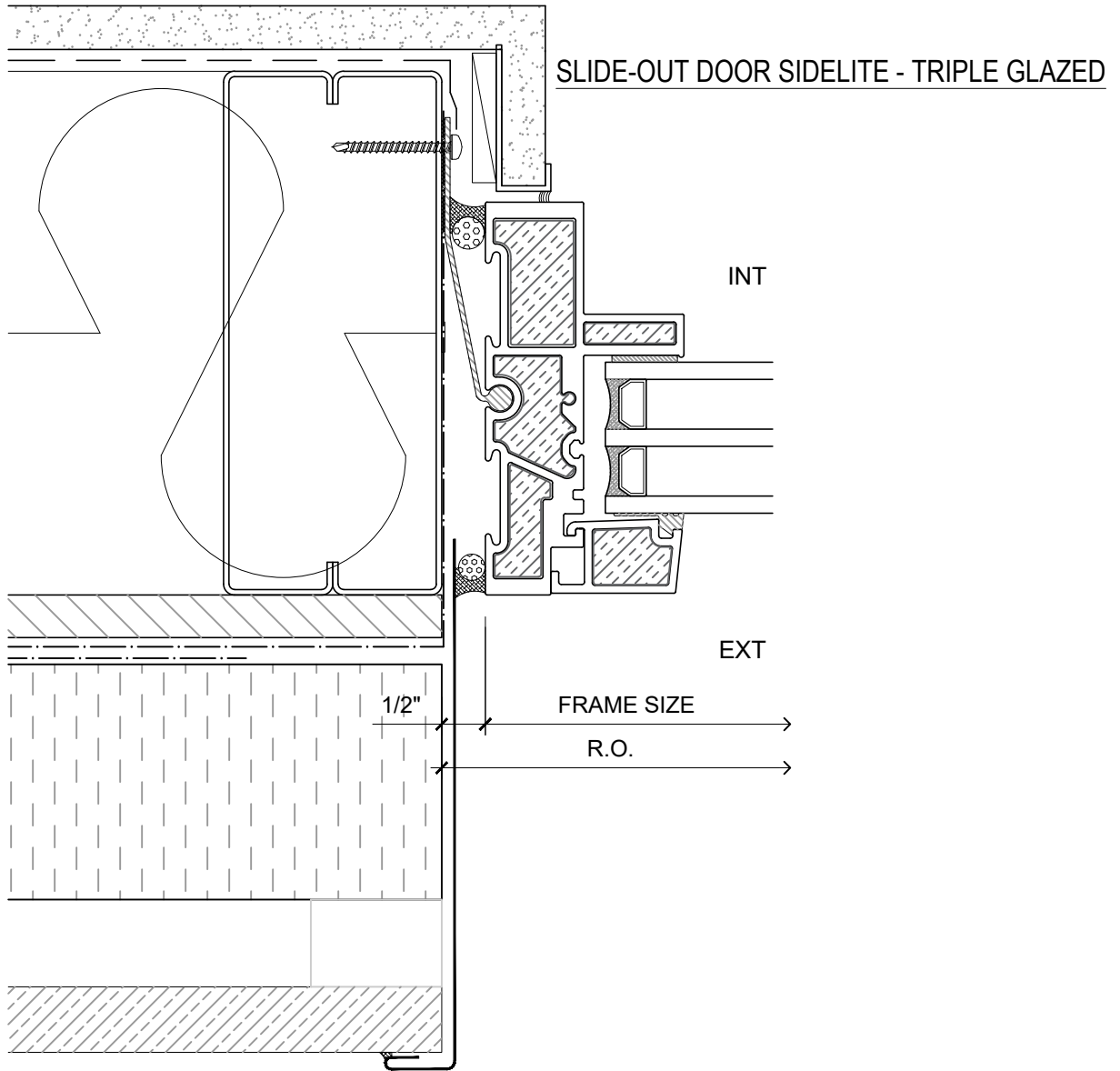
DRAWING NO.:
D-1.05

SCALE: 6" = 1'-0"

PATENTED

DATE: 24 AUGUST, 2020

DRAWN BY: CH



PATENTED

NOTE: THIS DRAFT DETAIL IS FOR GENERAL ARRANGEMENT PURPOSES ONLY, AND DOES NOT NECESSARILY REPRESENT A DETAIL THAT IS APPROPRIATE FOR A SPECIFIC PROJECT. PRODUCTS AND ACCESSORIES PROVIDED BY CASCADIA MUST BE CONFIRMED FOR SPECIFIC PROJECTS.

NOTE: ANCHOR CLIPS AT HEAD AND JAMBS ARE INTERMITTENT

CASCADIA WINDOWS LTD.
 #101-5350 275TH STREET
 LANGLEY, BC, CANADA V4W 0C1

DRAWING TITLE: **UNIVERSAL SERIES © - SLIDE-OUT DOOR JAMB**
RAINSCREEN WALL ASSEMBLY, EXTERIOR INSULATION

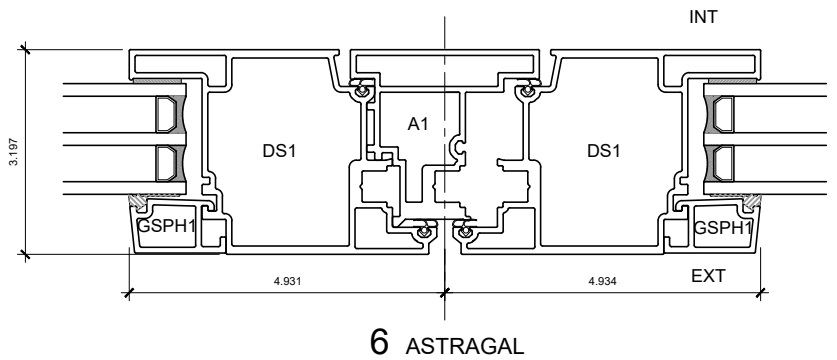
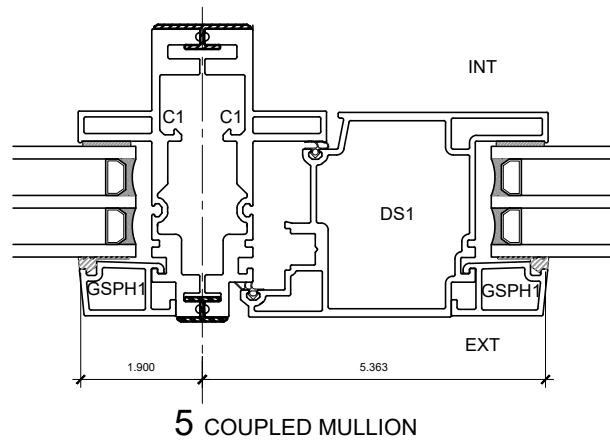
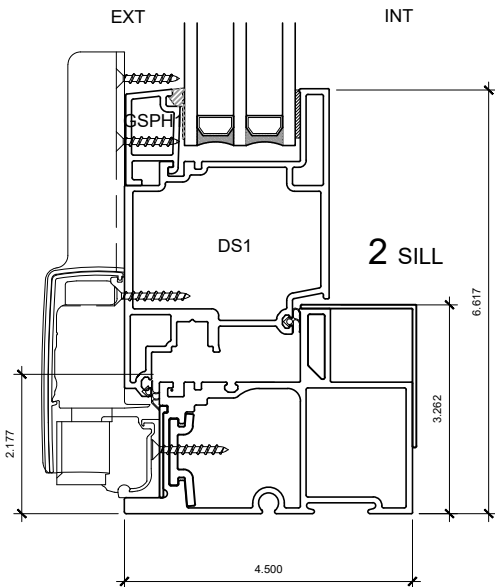
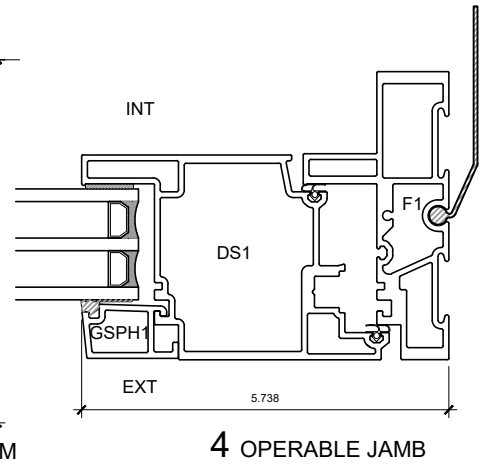
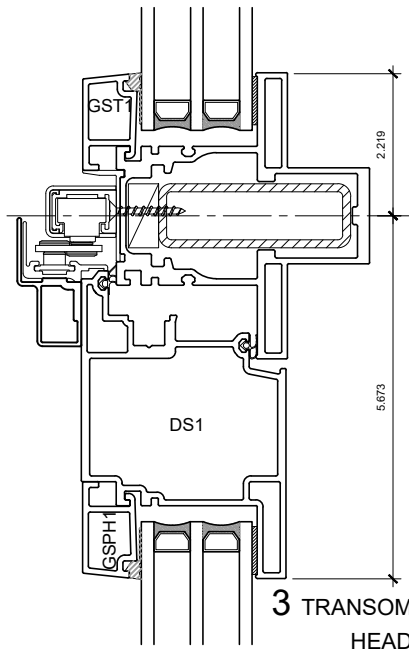
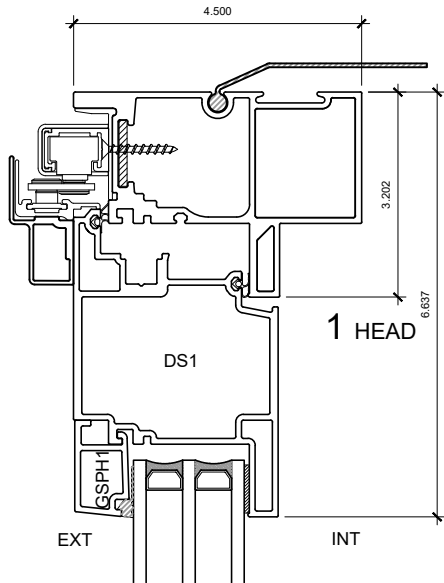
DRAWING NO.:
D-1.06

SCALE: 6" = 1'-0"

PATENTED

DATE: 24 AUGUST, 2020

DRAWN BY: CH



PATENTED

NOTE: THIS DRAFT DETAIL IS FOR GENERAL ARRANGEMENT PURPOSES ONLY, AND DOES NOT NECESSARILY REPRESENT A DETAIL THAT IS APPROPRIATE FOR A SPECIFIC PROJECT. PRODUCTS AND ACCESSORIES PROVIDED BY CASCADIA MUST BE CONFIRMED FOR SPECIFIC PROJECTS.

NOTE: ANCHOR CLIPS AT HEAD AND JAMBS ARE INTERMITTENT

CASCADIA WINDOWS LTD.
#101-5350 275TH STREET
LANGLEY, BC, CANADA V4W 0C1

DRAWING
TITLE:

UNIVERSAL SERIES - SLIDE-OUT DOOR
PRODUCT DRAWING

DRAWING NO.:

D-2.01

SCALE: 4" = 1'-0"

PATENTED

DATE: 24 AUGUST, 2020

DRAWN BY: CH