

INTERIOR GLAZED WINDOW

PATENTED

EXT

INT

SELF-ADHERED MEMBRANE.

3/8"x3/4" VERTICAL SLOTS @ HEAD

#10x1 1/2" SS SELF DRILLING SCREW OR DT2000. @ 8" O.C.

1/2"

FRAME SIZE

R.O.

EXTERIOR GLAZED WINDOW

PATENTED

EXT

INT

SELF-ADHERED MEMBRANE.

3/8"x3/4" VERTICAL SLOTS @ HEAD

#10x1 1/2" SS SELF DRILLING SCREW OR DT2000. @ 8" O.C.

1/2"

FRAME SIZE

R.O.

NOTE: THIS DRAFT DETAIL IS FOR GENERAL ARRANGEMENT PURPOSES ONLY, AND DOES NOT NECESSARILY REPRESENT A DETAIL THAT IS APPROPRIATE FOR A SPECIFIC PROJECT. PRODUCTS AND ACCESSORIES PROVIDED BY CASCADIA MUST BE CONFIRMED FOR SPECIFIC PROJECTS.

NOTE: NAIL FLANGE IS CONTINUOUS

CASCADIA WINDOWS LTD.
#101-5350 275TH STREET
LANGLEY, BC, CANADA V4W 0C1

DRAWING TITLE:

UNIVERSAL SERIES - WINDOW HEADS
REVERSED NAIL FLANGE INSTALLATION (CW-NF1)

DRAWING NO.:

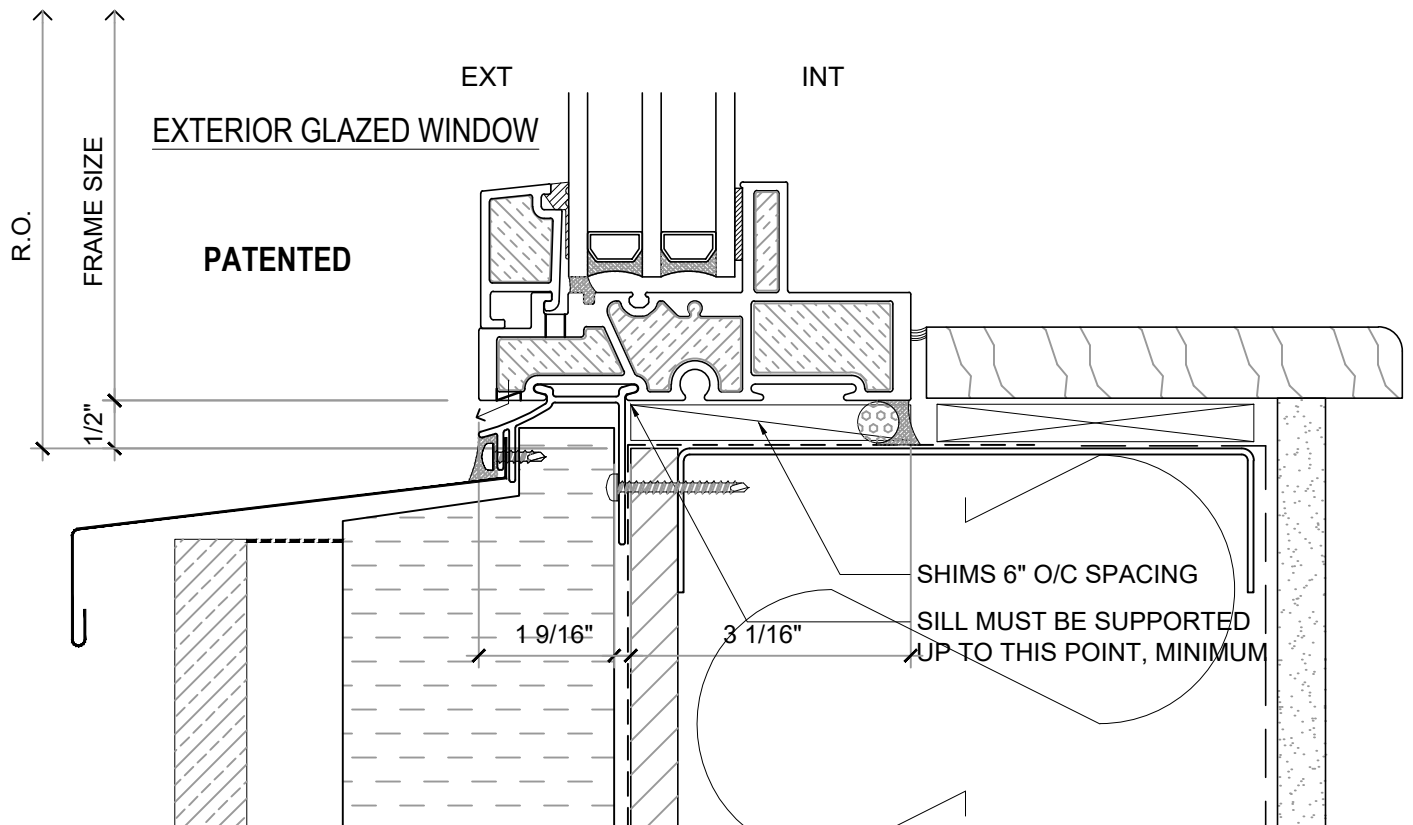
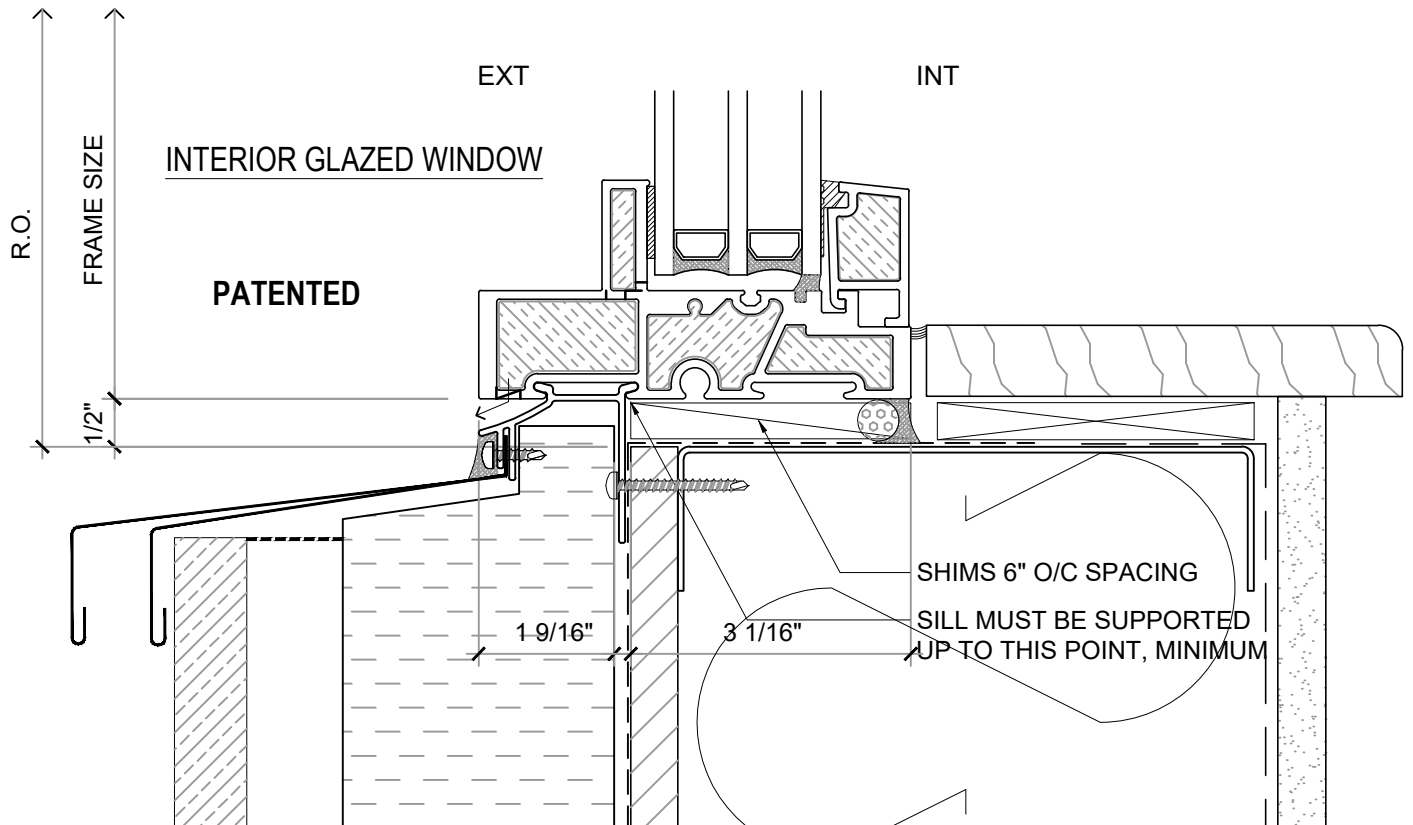
NF-1.09

SCALE: 6" = 1'-0"

PATENTED

DATE: 26 NOVEMBER, 2018

DRAWN BY: CP



NOTE: THIS DRAFT DETAIL IS FOR GENERAL ARRANGEMENT PURPOSES ONLY, AND DOES NOT NECESSARILY REPRESENT A DETAIL THAT IS APPROPRIATE FOR A SPECIFIC PROJECT. PRODUCTS AND ACCESSORIES PROVIDED BY CASCADIA MUST BE CONFIRMED FOR SPECIFIC PROJECTS.

NOTE: NAIL FLANGE IS CONTINUOUS

CASCADIA WINDOWS LTD.
 #101-5350 275TH STREET
 LANGLEY, BC, CANADA V4W 0C1

DRAWING TITLE: **UNIVERSAL SERIES - WINDOW SILLS**
REVERSED NAIL FLANGE INSTALLATION (CW-NF3)

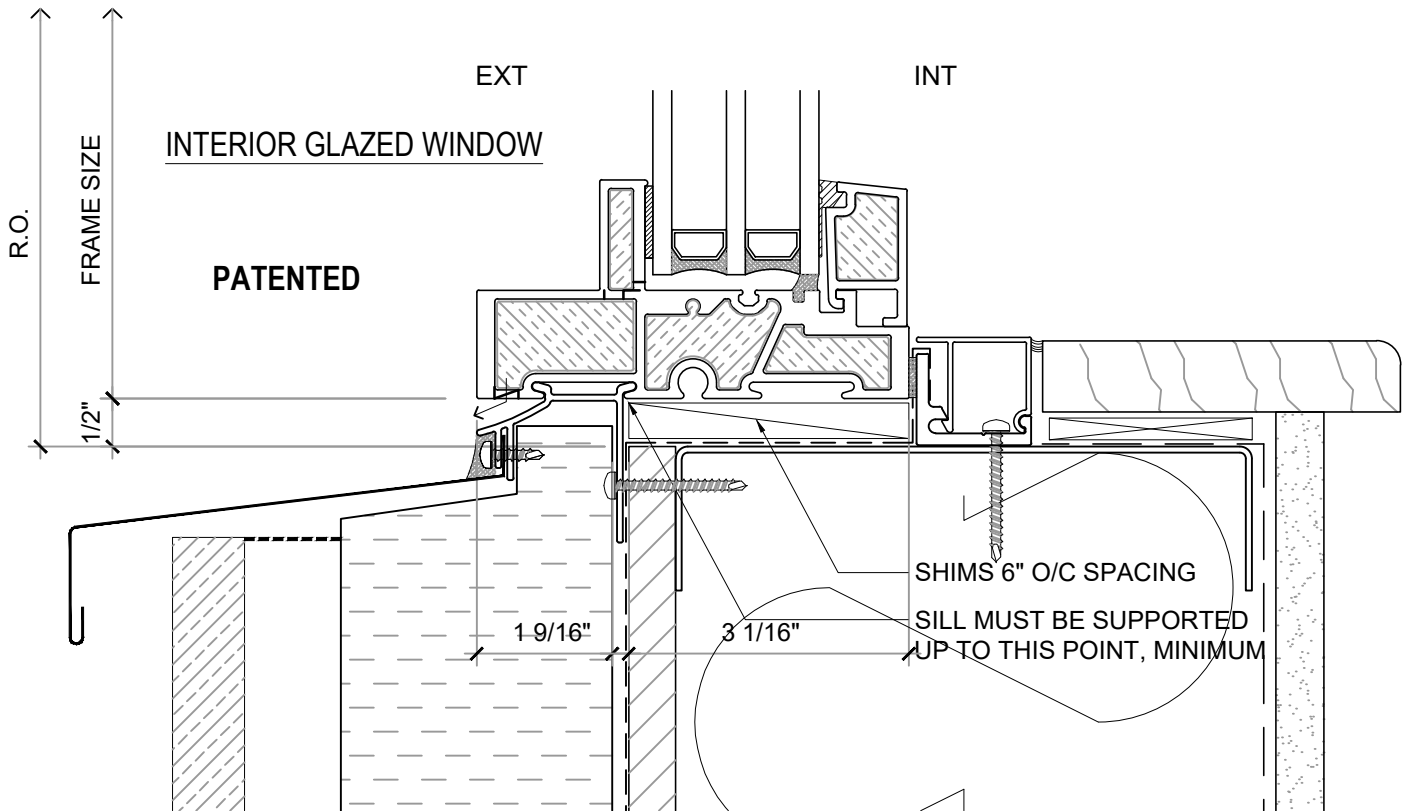
DRAWING NO.: **NF-1.10**

SCALE: 6" = 1'-0"

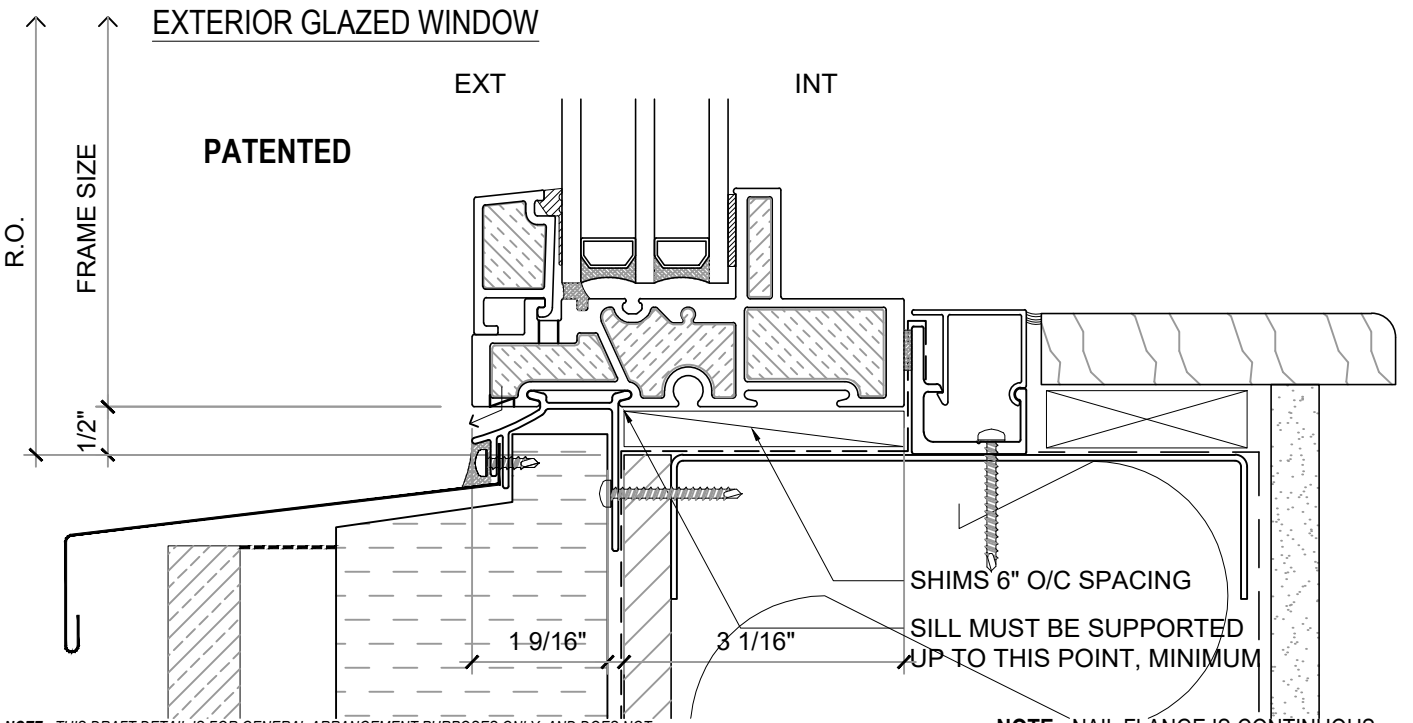
PATENTED

DATE: 26 NOVEMBER, 2018

DRAWN BY: CP



ALTERNATE SILL DETAILS



NOTE: THIS DRAFT DETAIL IS FOR GENERAL ARRANGEMENT PURPOSES ONLY, AND DOES NOT NECESSARILY REPRESENT A DETAIL THAT IS APPROPRIATE FOR A SPECIFIC PROJECT. PRODUCTS AND ACCESSORIES PROVIDED BY CASCADIA MUST BE CONFIRMED FOR SPECIFIC PROJECTS.

NOTE: NAIL FLANGE IS CONTINUOUS

CASCADIA WINDOWS LTD.
 #101-5350 275TH STREET
 LANGLEY, BC, CANADA V4W 0C1

DRAWING
 TITLE:

UNIVERSAL SERIES - WINDOW SILLS
 REVERSED NAIL FLANGE INSTALLATION (CW-NF3)

DRAWING NO.:

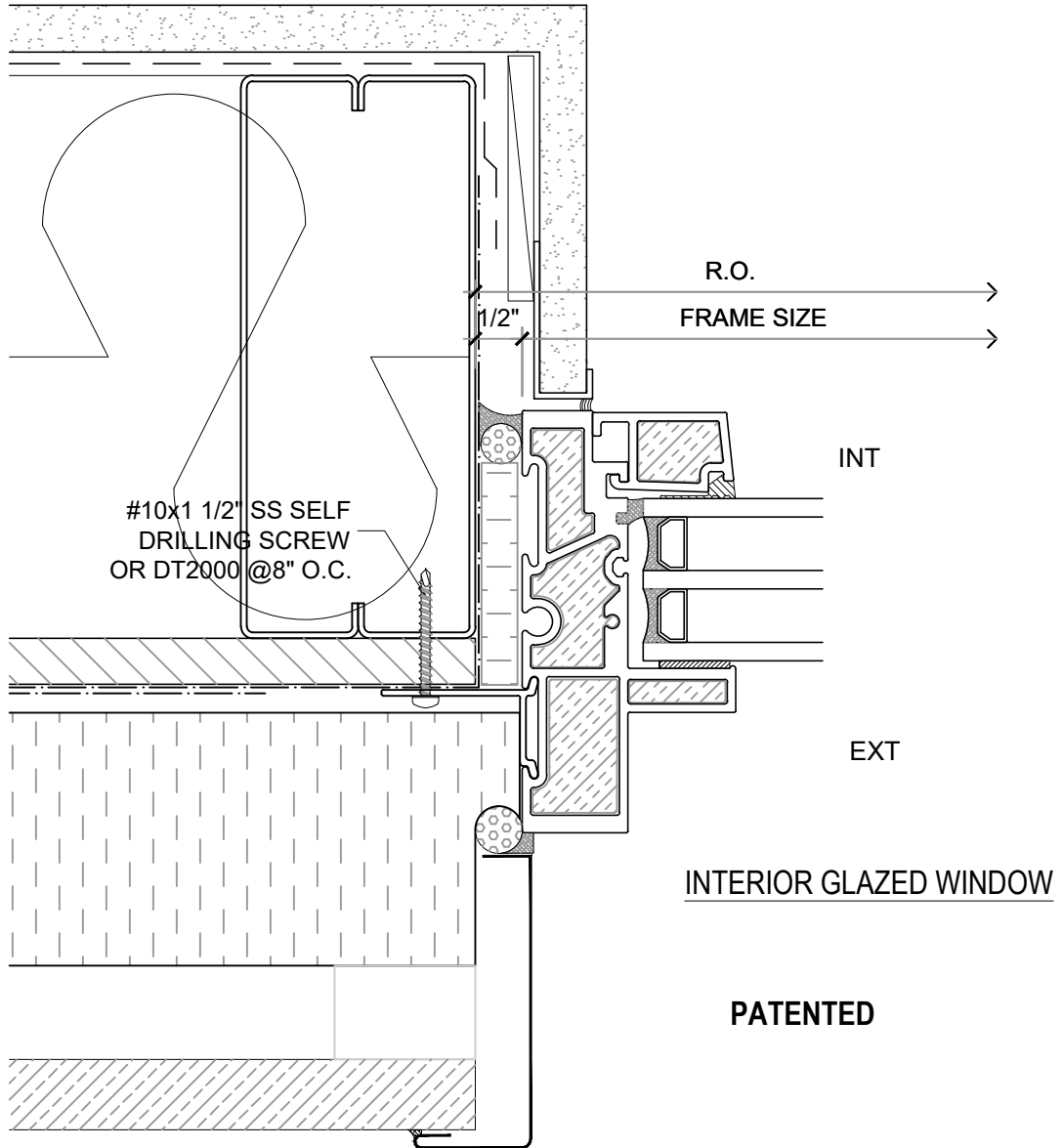
NF-1.10A

SCALE: 6" = 1'-0"

PATENTED

DATE: 26 NOVEMBER, 2018

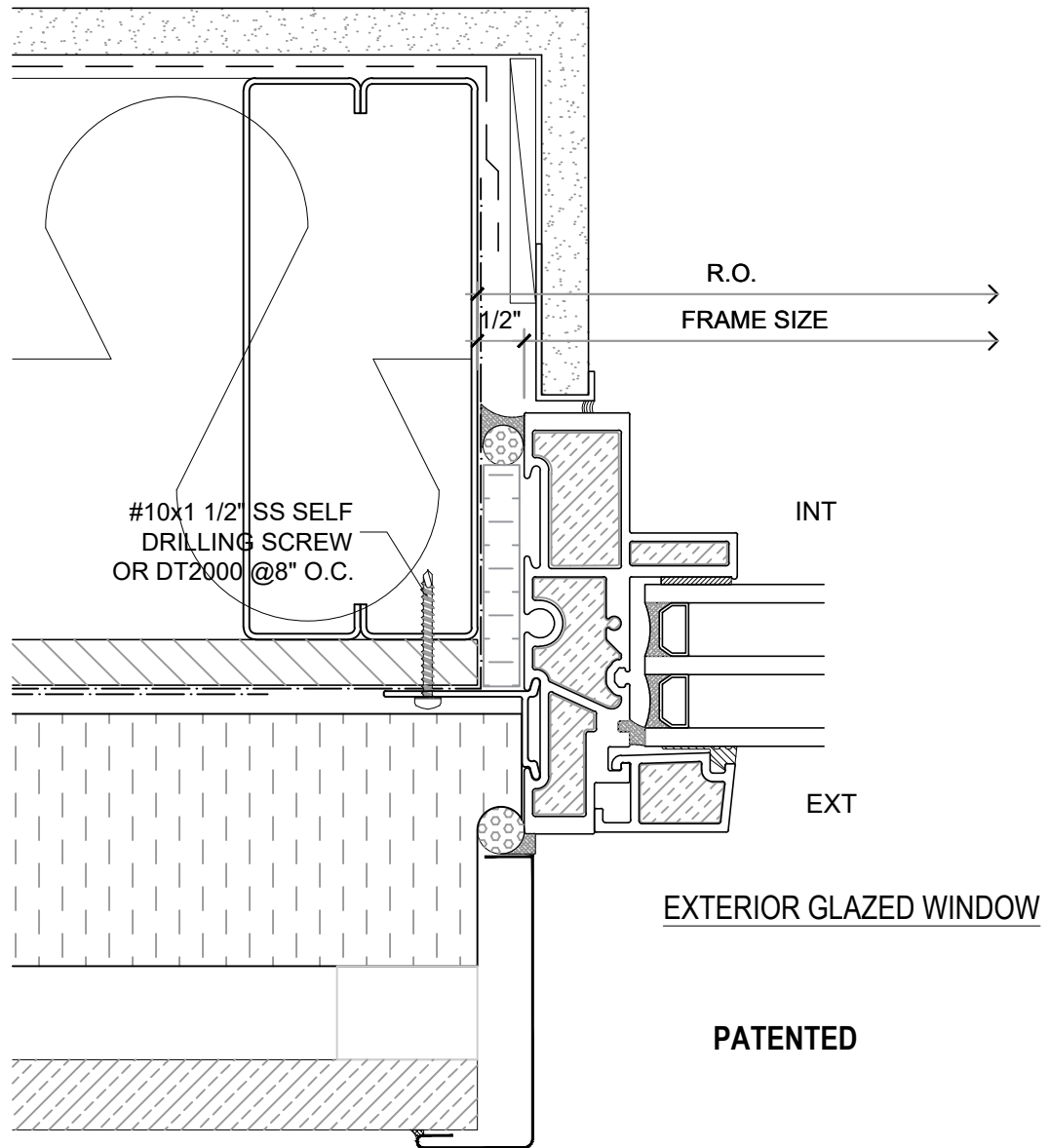
DRAWN BY: CP



NOTE: THIS DRAFT DETAIL IS FOR GENERAL ARRANGEMENT PURPOSES ONLY, AND DOES NOT NECESSARILY REPRESENT A DETAIL THAT IS APPROPRIATE FOR A SPECIFIC PROJECT. PRODUCTS AND ACCESSORIES PROVIDED BY CASCADIA MUST BE CONFIRMED FOR SPECIFIC PROJECTS.

NOTE: NAIL FLANGE IS CONTINUOUS

CASCADIA WINDOWS LTD. #101-5350 275TH STREET LANGLEY, BC, CANADA V4W 0C1	DRAWING TITLE: UNIVERSAL SERIES - WINDOW JAMB REVERSED NAIL FLANGE INSTALLATION (CW-NF1)	DRAWING NO.: NF-1.11
	SCALE: 6" = 1'-0"	PATENTED



NOTE: THIS DRAFT DETAIL IS FOR GENERAL ARRANGEMENT PURPOSES ONLY, AND DOES NOT NECESSARILY REPRESENT A DETAIL THAT IS APPROPRIATE FOR A SPECIFIC PROJECT. PRODUCTS AND ACCESSORIES PROVIDED BY CASCADIA MUST BE CONFIRMED FOR SPECIFIC PROJECTS.

NOTE: NAIL FLANGE IS CONTINUOUS

CASCADIA WINDOWS LTD.
 #101-5350 275TH STREET
 LANGLEY, BC, CANADA V4W 0C1

DRAWING
 TITLE:

UNIVERSAL SERIES - WINDOW JAMB
REVERSED NAIL FLANGE INSTALLATION (CW-NF1)

DRAWING NO.:

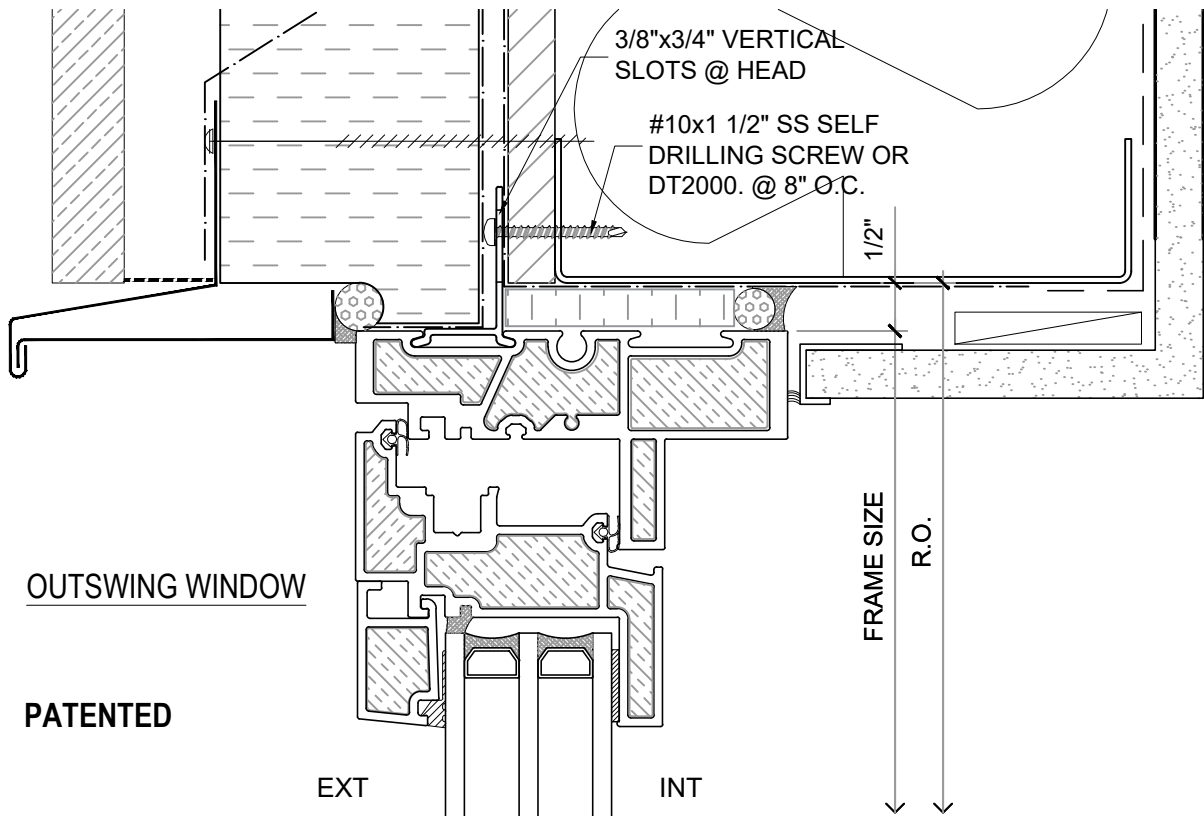
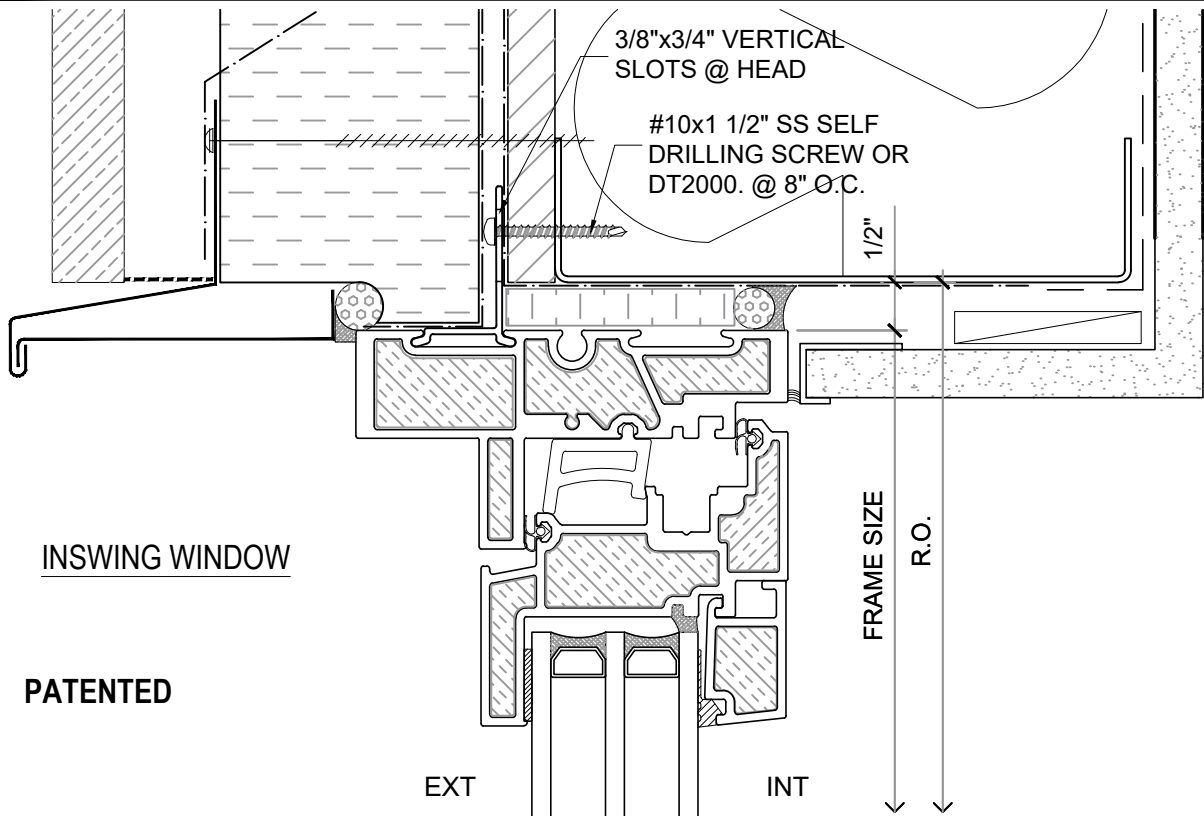
NF-1.12

SCALE: 6" = 1'-0"

PATENTED

DATE: 26 NOVEMBER, 2018

DRAWN BY: CP



NOTE: THIS DRAFT DETAIL IS FOR GENERAL ARRANGEMENT PURPOSES ONLY, AND DOES NOT NECESSARILY REPRESENT A DETAIL THAT IS APPROPRIATE FOR A SPECIFIC PROJECT. PRODUCTS AND ACCESSORIES PROVIDED BY CASCADIA MUST BE CONFIRMED FOR SPECIFIC PROJECTS.

NOTE: NAIL FLANGE IS CONTINUOUS

CASCADIA WINDOWS LTD.
 #101-5350 275TH STREET
 LANGLEY, BC, CANADA V4W 0C1

DRAWING TITLE: **UNIVERSAL SERIES - WINDOW HEADS**
REVERSED NAIL FLANGE INSTALLATION (CW-NF1)

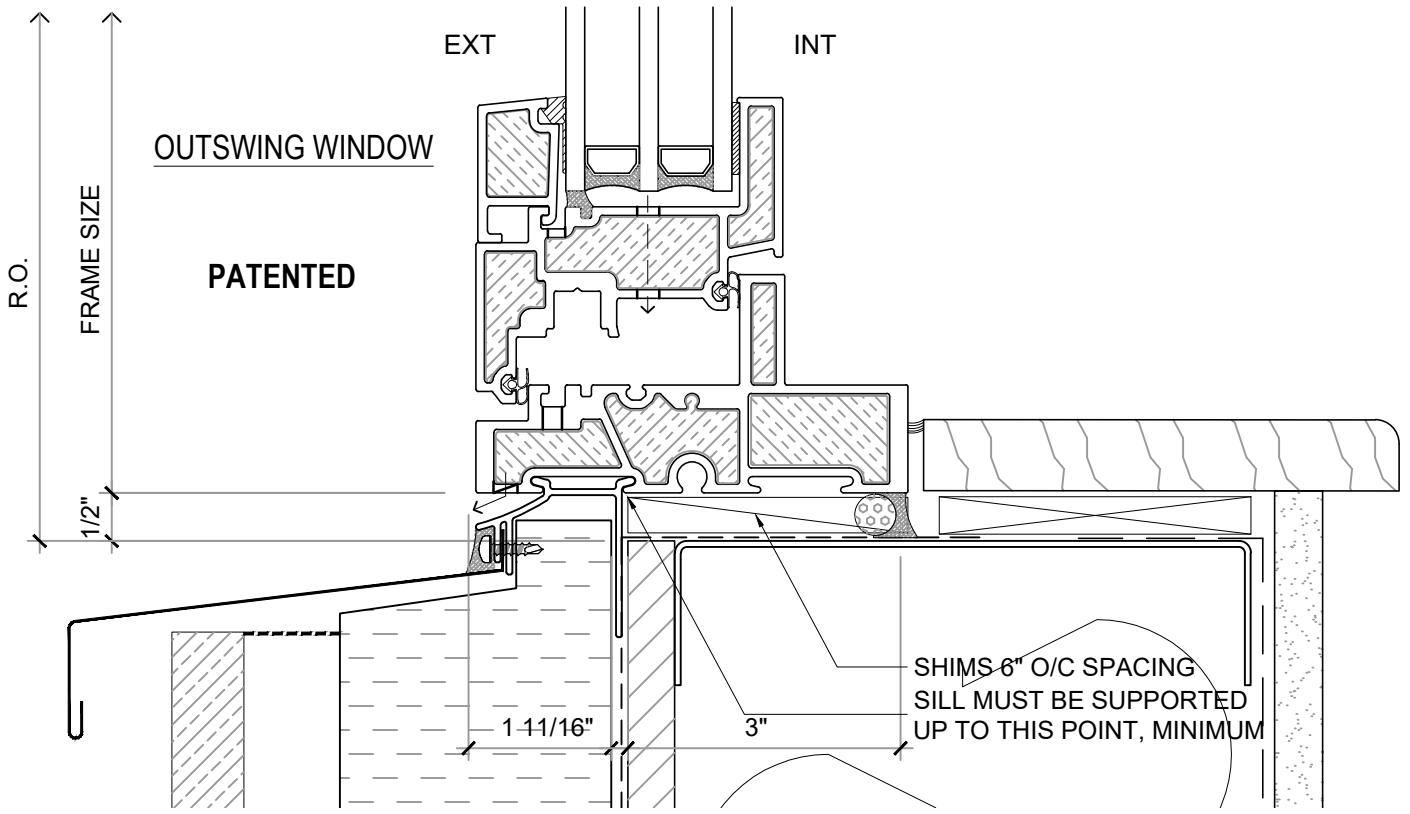
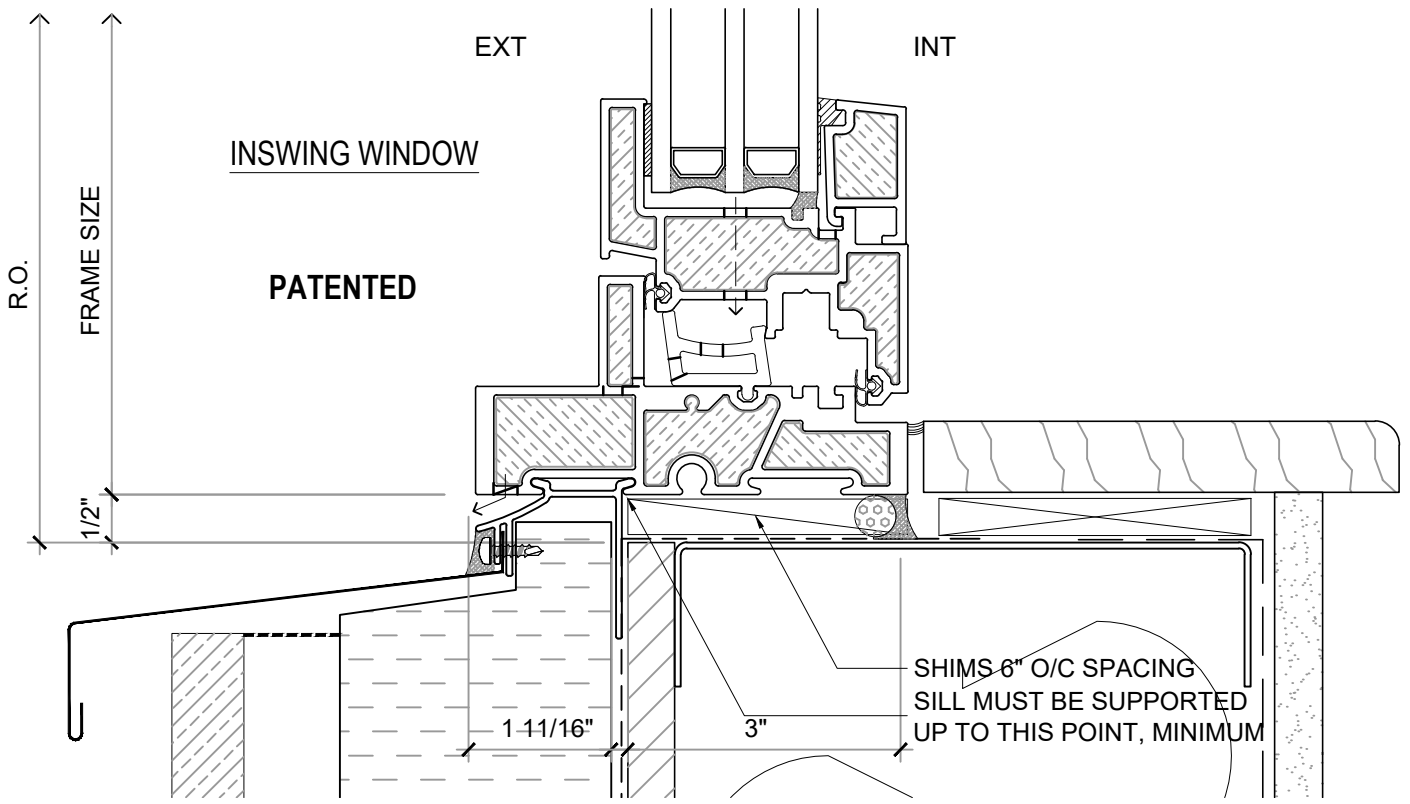
DRAWING NO.: **NF-1.13**

SCALE: 6" = 1'-0"

PATENTED

DATE: 26 NOVEMBER, 2018

DRAWN BY: CP



NOTE: THIS DRAFT DETAIL IS FOR GENERAL ARRANGEMENT PURPOSES ONLY, AND DOES NOT NECESSARILY REPRESENT A DETAIL THAT IS APPROPRIATE FOR A SPECIFIC PROJECT. PRODUCTS AND ACCESSORIES PROVIDED BY CASCADIA MUST BE CONFIRMED FOR SPECIFIC PROJECTS.

NOTE: NAIL FLANGE IS CONTINUOUS

CASCADIA WINDOWS LTD.
 #101-5350 275TH STREET
 LANGLEY, BC, CANADA V4W 0C1

DRAWING TITLE: **UNIVERSAL SERIES - WINDOW SILLS**
REVERSED NAIL FLANGE INSTALLATION (CW-NF3)

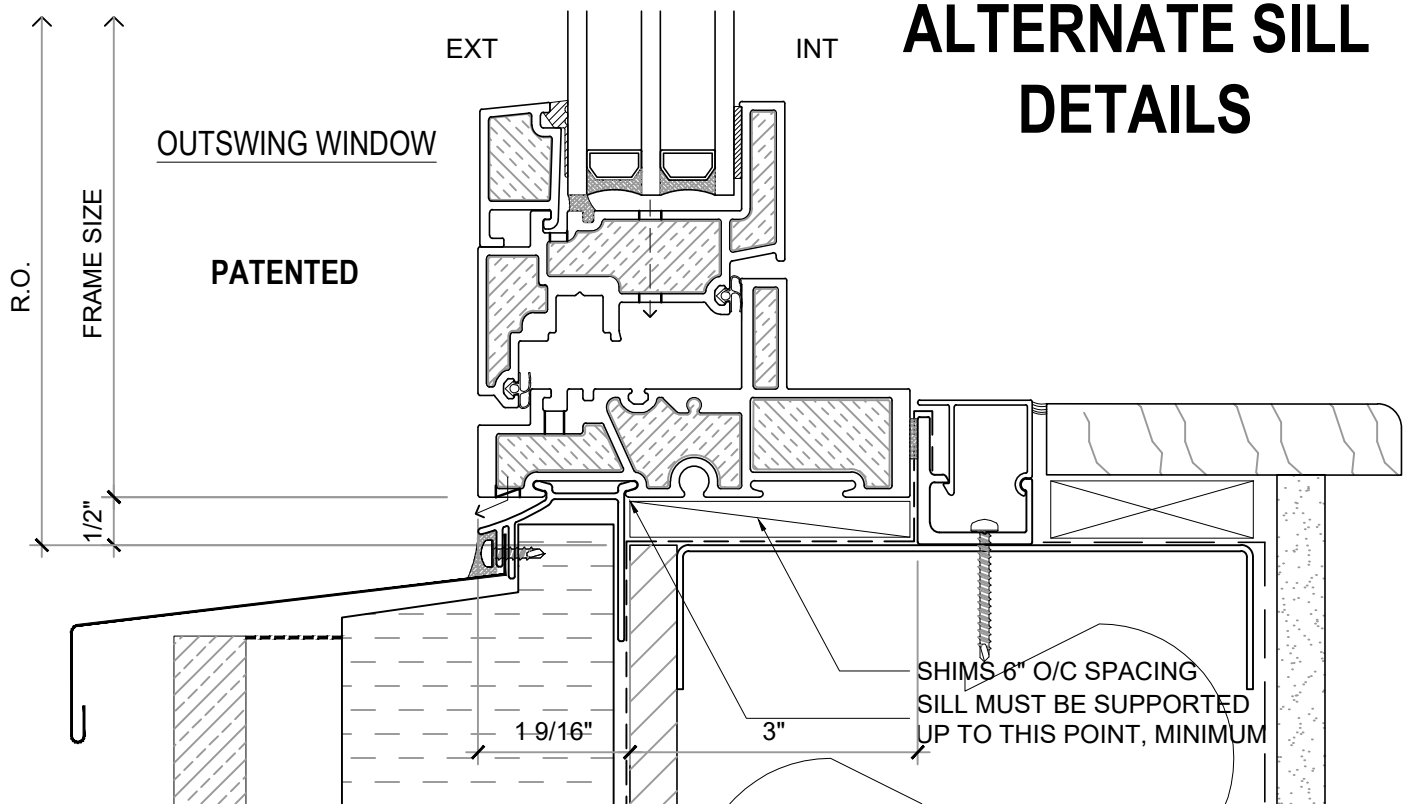
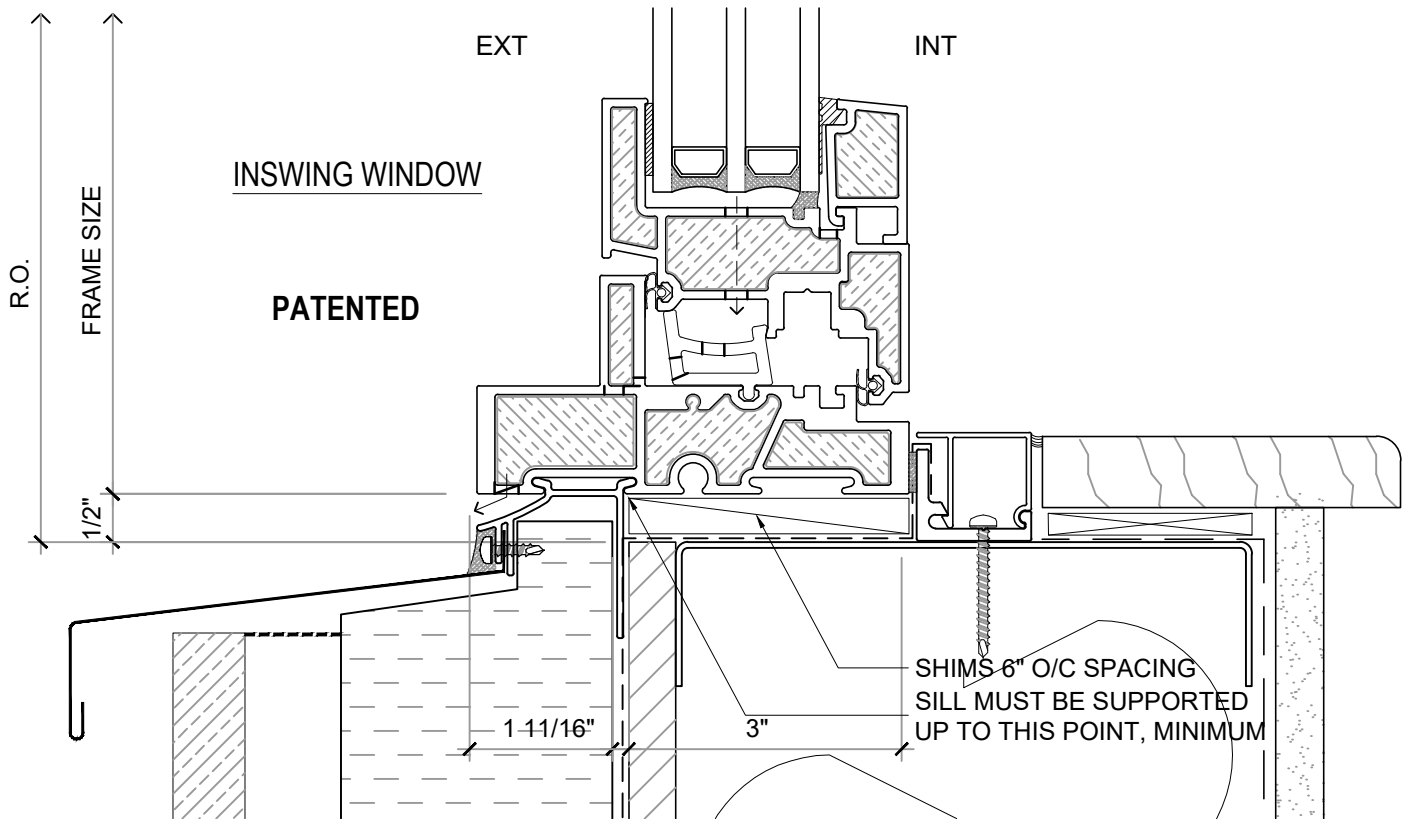
DRAWING NO.: **NF-1.14**

SCALE: 6" = 1'-0"

PATENTED

DATE: 26 NOVEMBER, 2018

DRAWN BY: CP



ALTERNATE SILL DETAILS

NOTE: THIS DRAFT DETAIL IS FOR GENERAL ARRANGEMENT PURPOSES ONLY, AND DOES NOT NECESSARILY REPRESENT A DETAIL THAT IS APPROPRIATE FOR A SPECIFIC PROJECT. PRODUCTS AND ACCESSORIES PROVIDED BY CASCADIA MUST BE CONFIRMED FOR SPECIFIC PROJECTS.

NOTE: NAIL FLANGE IS CONTINUOUS

CASCADIA WINDOWS LTD.
#101-5350 275TH STREET
LANGLEY, BC, CANADA V4W 0C1

DRAWING
TITLE:

UNIVERSAL SERIES - WINDOW SILLS
REVERSED NAIL FLANGE INSTALLATION (CW-NF3)

DRAWING NO.:

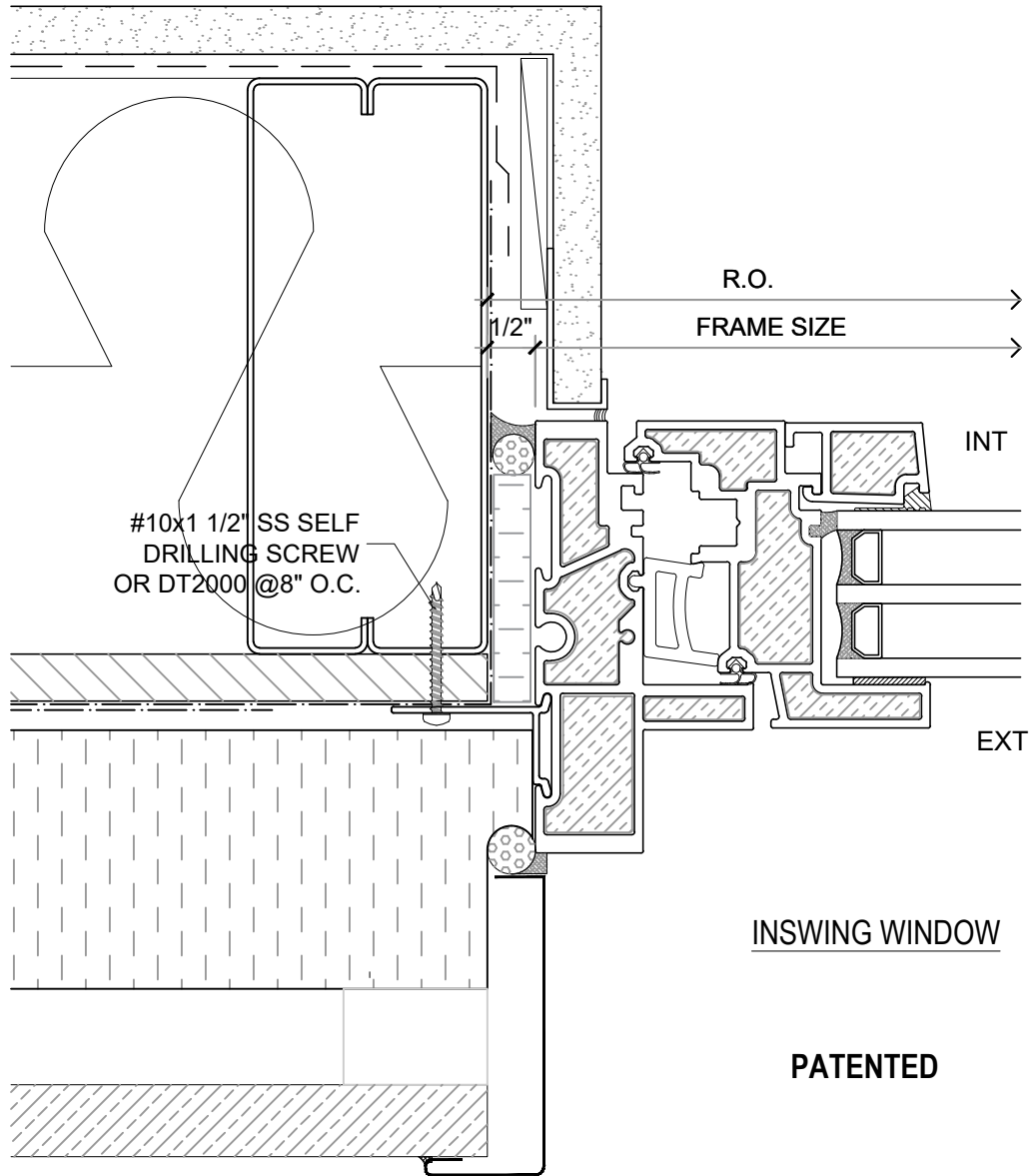
NF-1.14A

SCALE: 6" = 1'-0"

PATENTED

DATE: 26 NOVEMBER, 2018

DRAWN BY: CP



NOTE: THIS DRAFT DETAIL IS FOR GENERAL ARRANGEMENT PURPOSES ONLY, AND DOES NOT NECESSARILY REPRESENT A DETAIL THAT IS APPROPRIATE FOR A SPECIFIC PROJECT. PRODUCTS AND ACCESSORIES PROVIDED BY CASCADIA MUST BE CONFIRMED FOR SPECIFIC PROJECTS.

NOTE: NAIL FLANGE IS CONTINUOUS

CASCADIA WINDOWS LTD.
 #101-5350 275TH STREET
 LANGLEY, BC, CANADA V4W 0C1

DRAWING
 TITLE:

UNIVERSAL SERIES - WINDOW JAMB
REVERSED NAIL FLANGE INSTALLATION (CW-NF1)

DRAWING NO.:

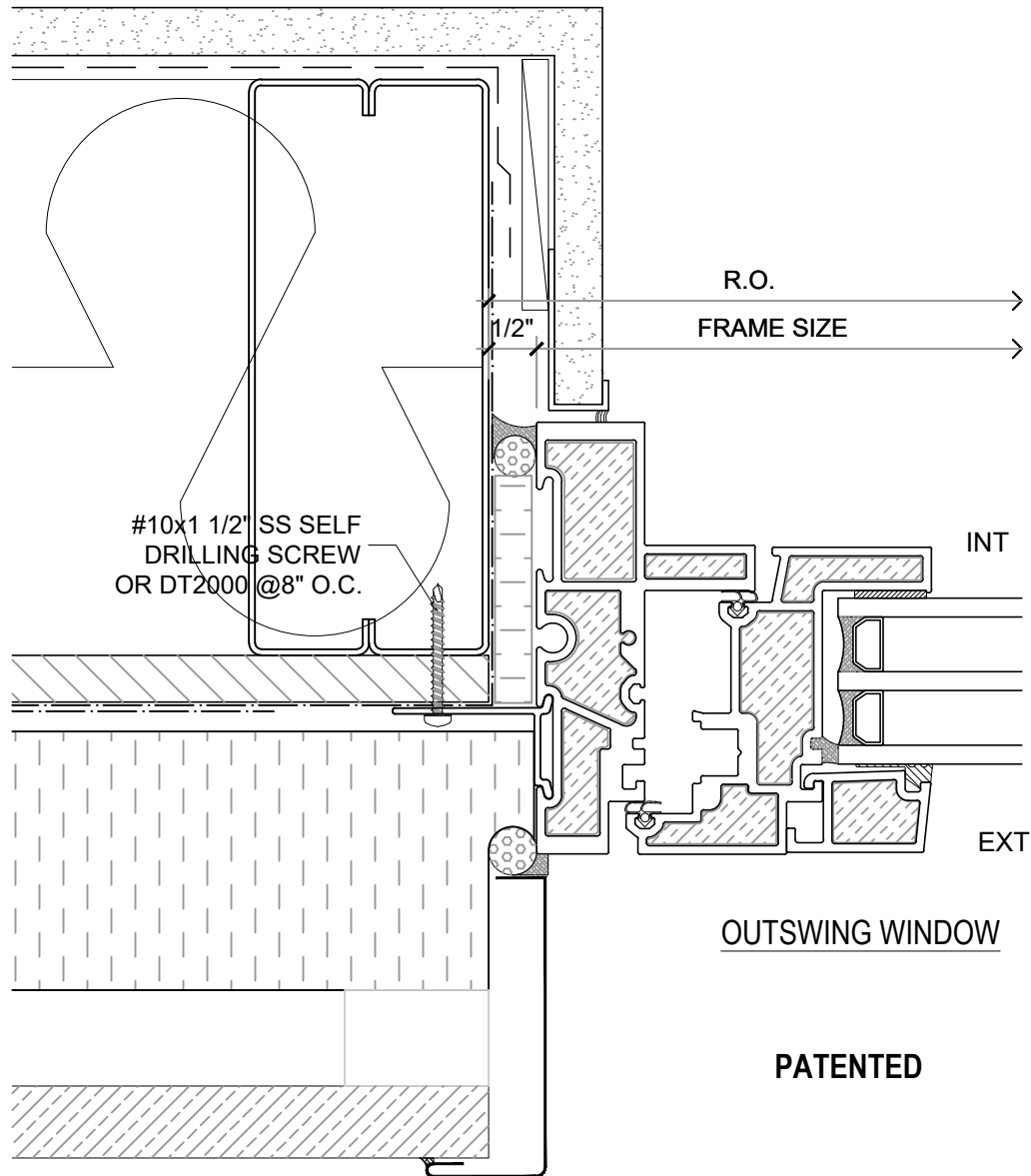
NF-1.15

SCALE: 6" = 1'-0"

PATENTED

DATE: 26 NOVEMBER, 2018

DRAWN BY: CP



NOTE: THIS DRAFT DETAIL IS FOR GENERAL ARRANGEMENT PURPOSES ONLY, AND DOES NOT NECESSARILY REPRESENT A DETAIL THAT IS APPROPRIATE FOR A SPECIFIC PROJECT. PRODUCTS AND ACCESSORIES PROVIDED BY CASCADIA MUST BE CONFIRMED FOR SPECIFIC PROJECTS.

NOTE: NAIL FLANGE IS CONTINUOUS

CASCADIA WINDOWS LTD. #101-5350 275TH STREET LANGLEY, BC, CANADA V4W 0C1	DRAWING TITLE: UNIVERSAL SERIES - WINDOW JAMB REVERSED NAIL FLANGE INSTALLATION (CW-NF1)	DRAWING NO.: NF-1.16
	SCALE: 6" = 1'-0"	PATENTED