

INTERIOR GLAZED WINDOW

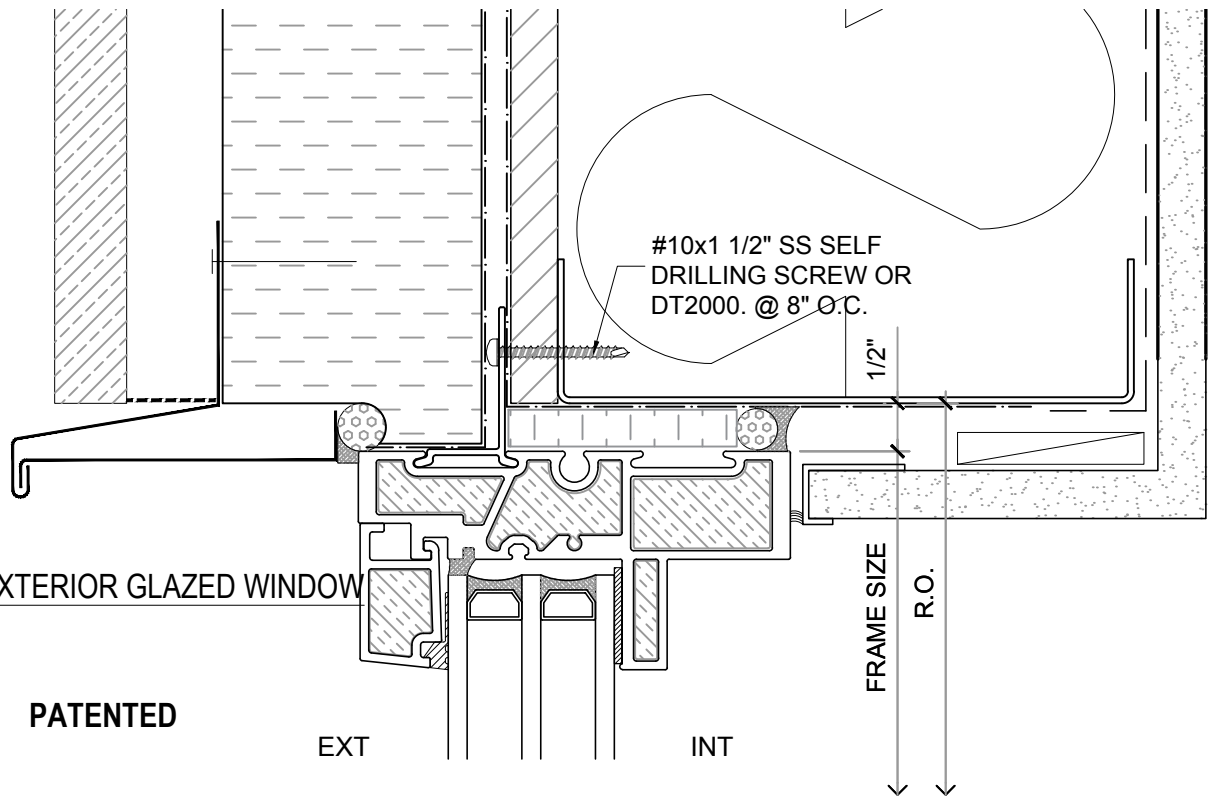
PATENTED

EXT

INT

FRAME SIZE

R.O.



EXTERIOR GLAZED WINDOW

PATENTED

EXT

INT

FRAME SIZE

R.O.

**NOTE:** THIS DRAFT DETAIL IS FOR GENERAL ARRANGEMENT PURPOSES ONLY, AND DOES NOT NECESSARILY REPRESENT A DETAIL THAT IS APPROPRIATE FOR A SPECIFIC PROJECT. PRODUCTS AND ACCESSORIES PROVIDED BY CASCADIA MUST BE CONFIRMED FOR SPECIFIC PROJECTS.

**NOTE:** NAIL FLANGE IS CONTINUOUS

CASCADIA WINDOWS LTD.  
 #101-5350 275TH STREET  
 LANGLEY, BC, CANADA V4W 0C1

DRAWING TITLE: UNIVERSAL SERIES - WINDOW HEADS  
 REVERSED NAIL FLANGE INSTALLATION (CW-NF1)

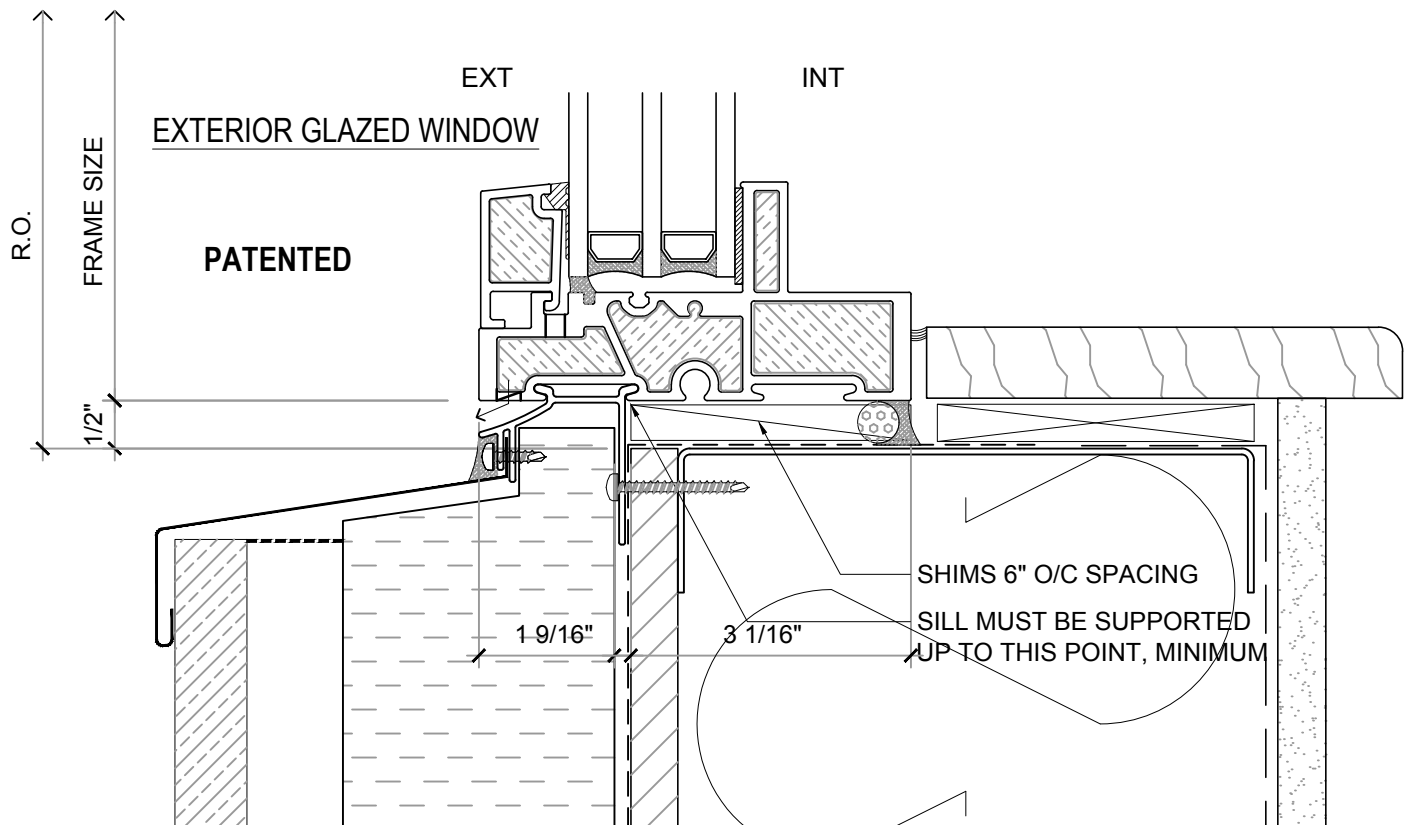
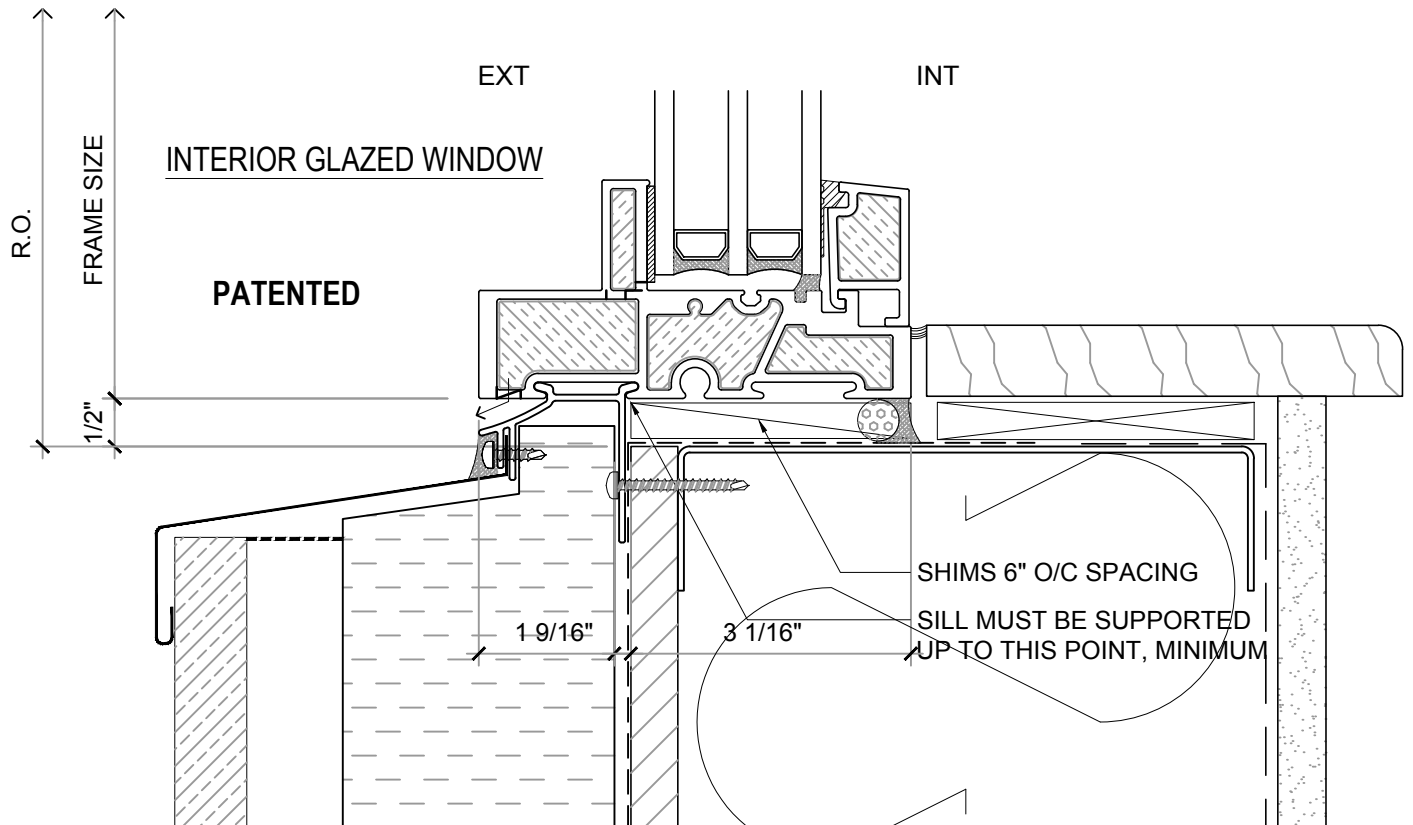
DRAWING NO.: NF-1.09

SCALE: 6" = 1'-0"

PATENTED

DATE: 16 MAY, 2018

DRAWN BY: CP



**NOTE:** THIS DRAFT DETAIL IS FOR GENERAL ARRANGEMENT PURPOSES ONLY, AND DOES NOT NECESSARILY REPRESENT A DETAIL THAT IS APPROPRIATE FOR A SPECIFIC PROJECT. PRODUCTS AND ACCESSORIES PROVIDED BY CASCADIA MUST BE CONFIRMED FOR SPECIFIC PROJECTS.

**NOTE:** NAIL FLANGE IS CONTINUOUS

**CASCADIA WINDOWS LTD.**  
 #101-5350 275TH STREET  
 LANGLEY, BC, CANADA V4W 0C1

DRAWING TITLE: **UNIVERSAL SERIES - WINDOW SILLS**  
**REVERSED NAIL FLANGE INSTALLATION (CW-NF3)**

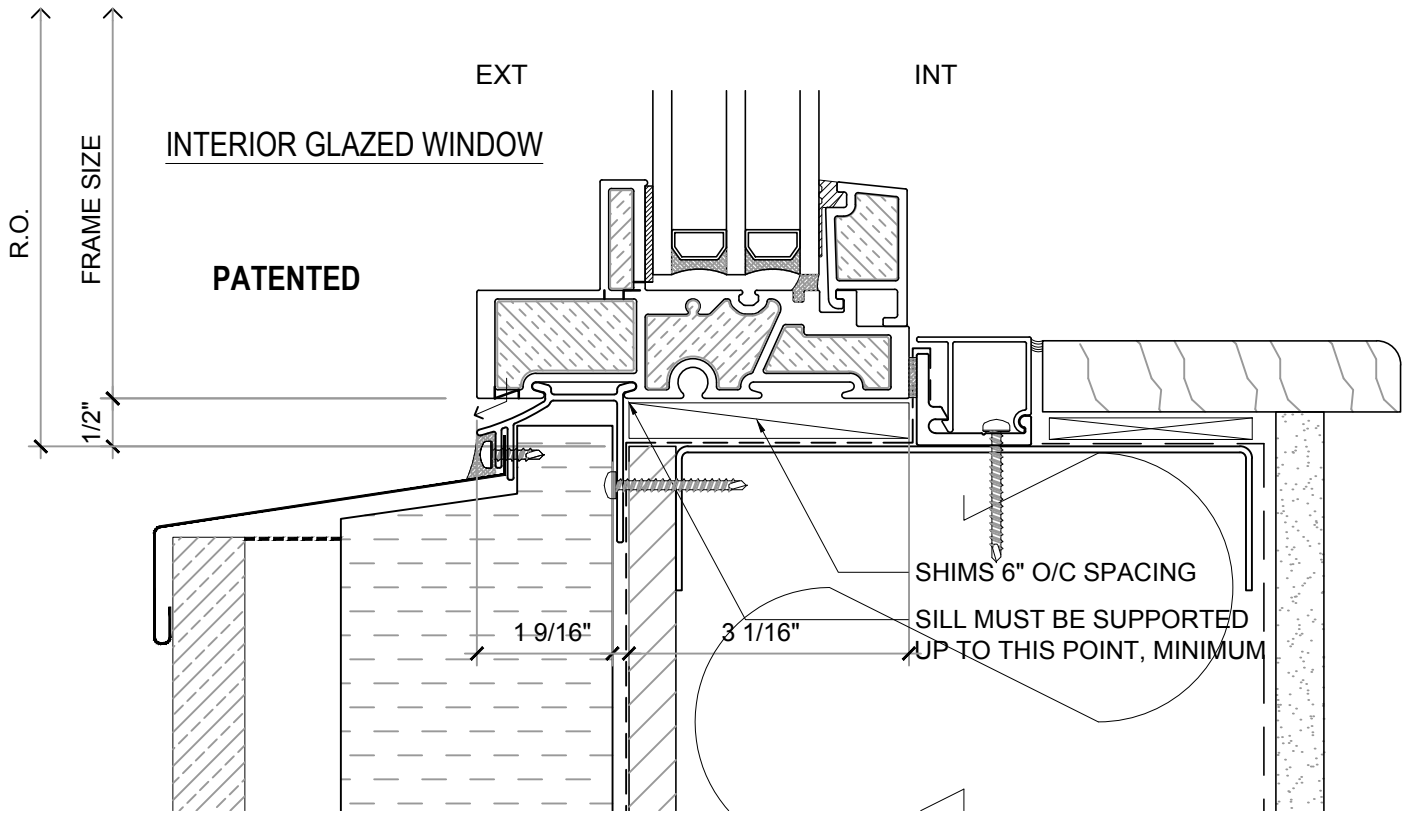
DRAWING NO.: **NF-1.10**

SCALE: 6" = 1'-0"

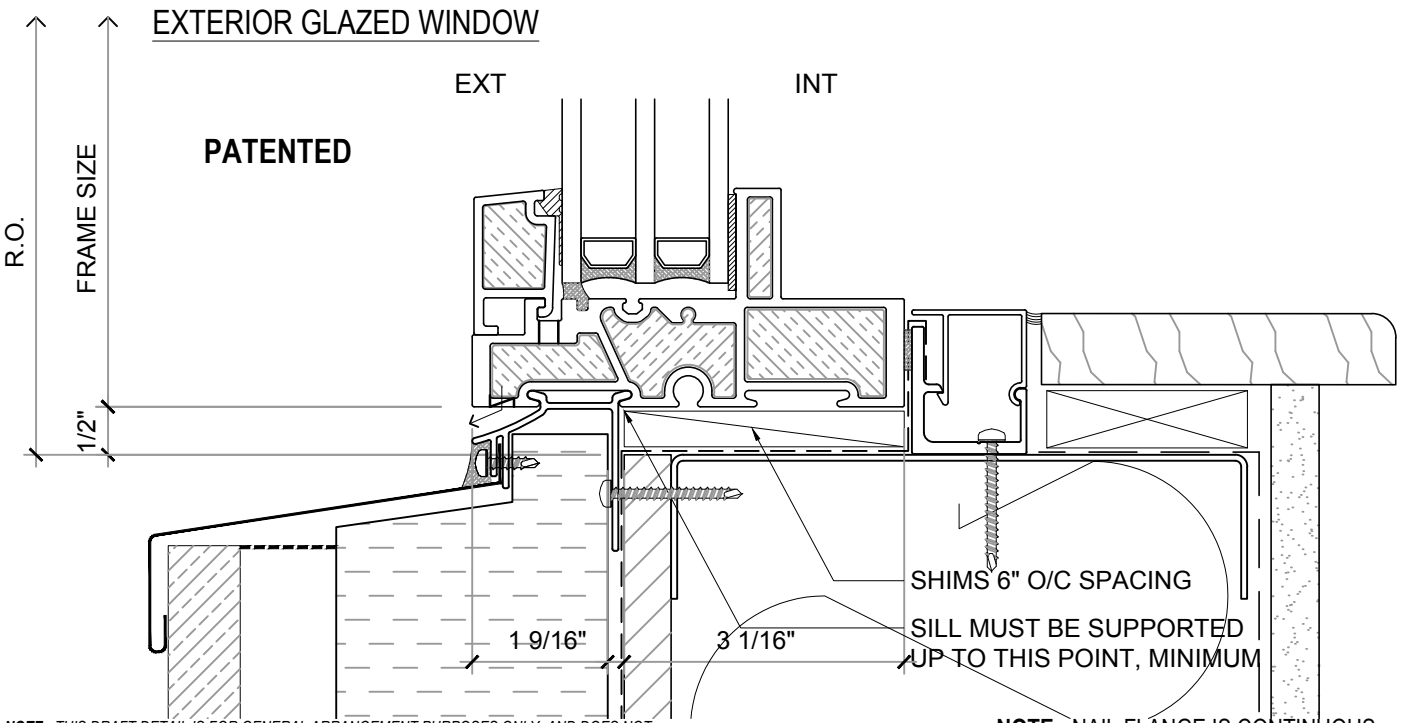
PATENTED

DATE: 16 MAY, 2018

DRAWN BY: CP



## ALTERNATE SILL DETAILS



**NOTE:** THIS DRAFT DETAIL IS FOR GENERAL ARRANGEMENT PURPOSES ONLY, AND DOES NOT NECESSARILY REPRESENT A DETAIL THAT IS APPROPRIATE FOR A SPECIFIC PROJECT. PRODUCTS AND ACCESSORIES PROVIDED BY CASCADIA MUST BE CONFIRMED FOR SPECIFIC PROJECTS.

**NOTE:** NAIL FLANGE IS CONTINUOUS

CASCADIA WINDOWS LTD.  
 #101-5350 275TH STREET  
 LANGLEY, BC, CANADA V4W 0C1

DRAWING  
 TITLE:

UNIVERSAL SERIES - WINDOW SILLS  
 REVERSED NAIL FLANGE INSTALLATION (CW-NF3)

DRAWING NO.:

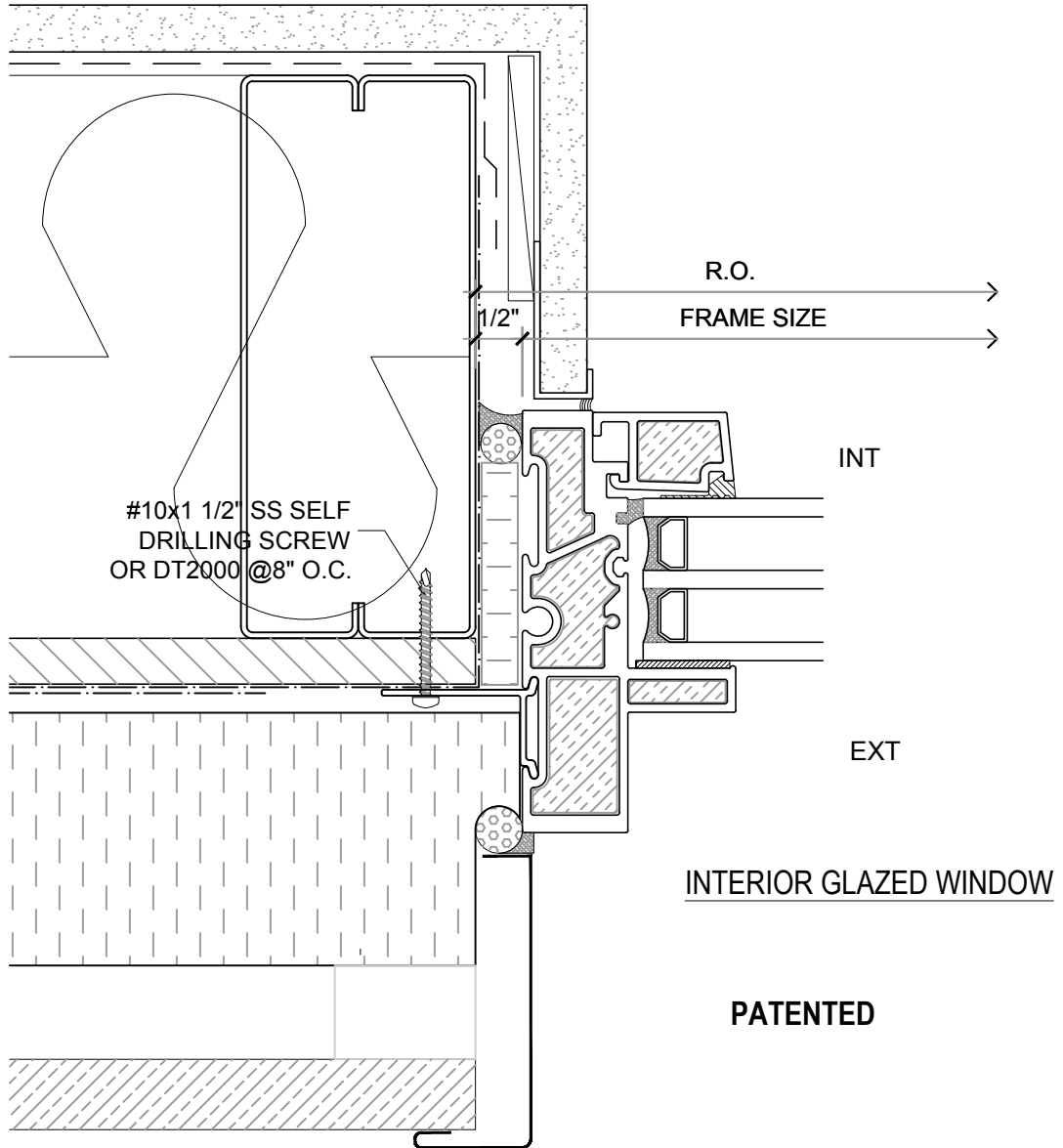
NF-1.10A

SCALE: 6" = 1'-0"

PATENTED

DATE: 16 MAY, 2018

DRAWN BY: CP



**NOTE:** THIS DRAFT DETAIL IS FOR GENERAL ARRANGEMENT PURPOSES ONLY, AND DOES NOT NECESSARILY REPRESENT A DETAIL THAT IS APPROPRIATE FOR A SPECIFIC PROJECT. PRODUCTS AND ACCESSORIES PROVIDED BY CASCADIA MUST BE CONFIRMED FOR SPECIFIC PROJECTS.

**NOTE:** NAIL FLANGE IS CONTINUOUS

CASCADIA WINDOWS LTD.  
 #101-5350 275TH STREET  
 LANGLEY, BC, CANADA V4W 0C1

DRAWING  
 TITLE:

UNIVERSAL SERIES - WINDOW JAMB  
 REVERSED NAIL FLANGE INSTALLATION (CW-NF1)

DRAWING NO.:

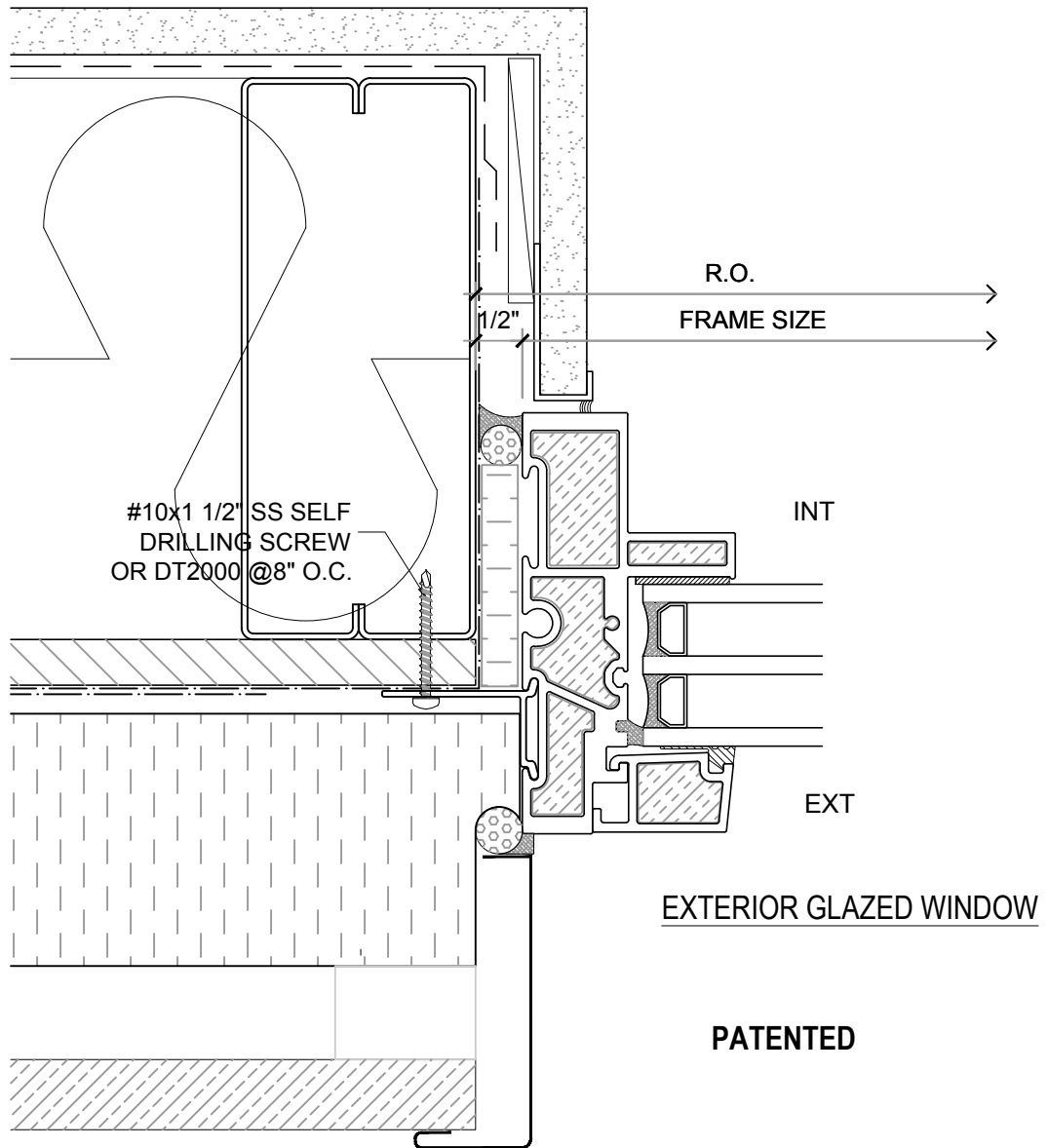
NF-1.11

SCALE: 6" = 1'-0"

PATENTED

DATE: 16 MAY, 2018

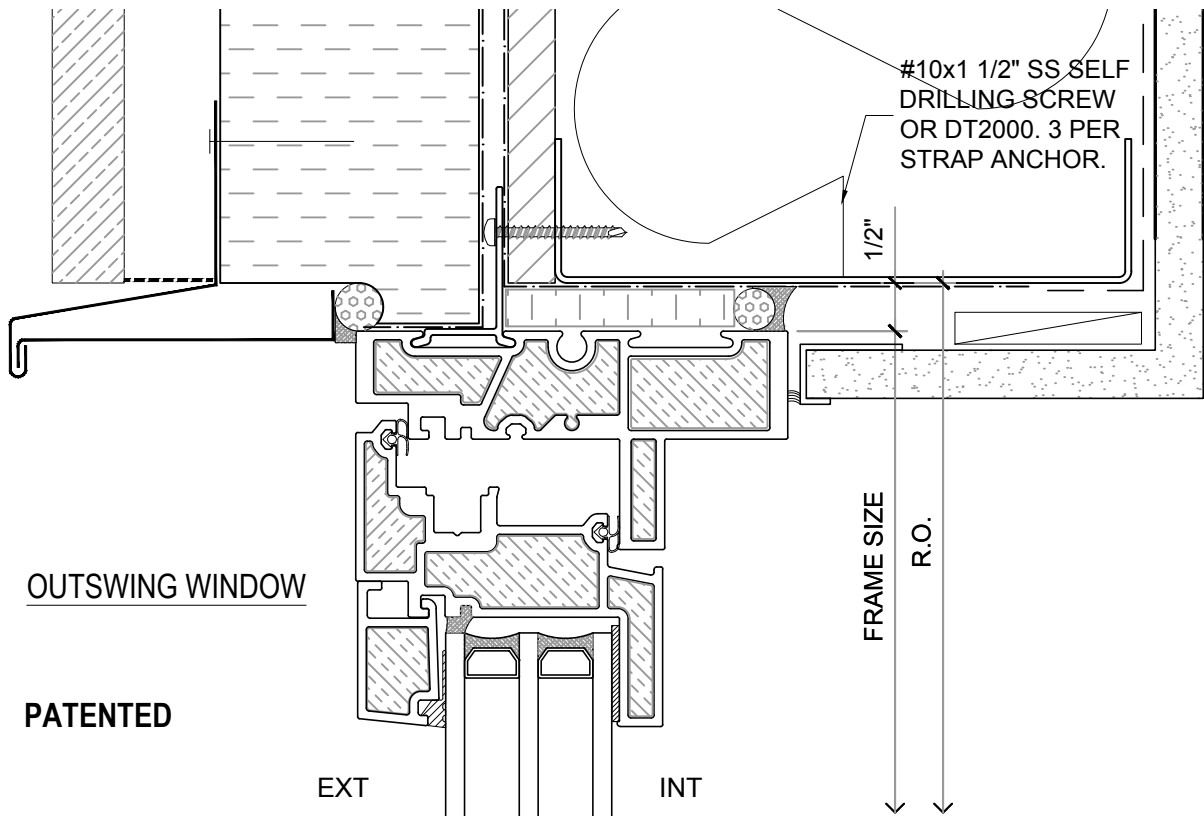
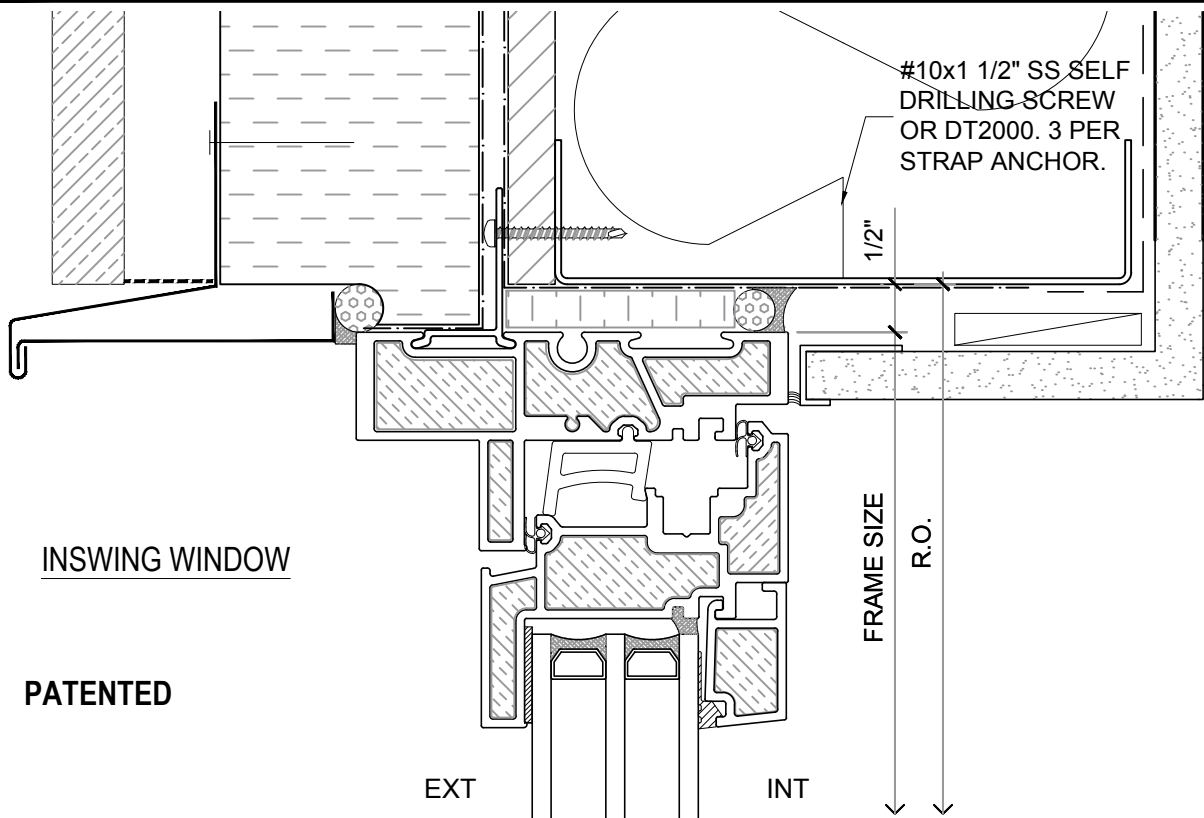
DRAWN BY: CP



**NOTE:** THIS DRAFT DETAIL IS FOR GENERAL ARRANGEMENT PURPOSES ONLY, AND DOES NOT NECESSARILY REPRESENT A DETAIL THAT IS APPROPRIATE FOR A SPECIFIC PROJECT. PRODUCTS AND ACCESSORIES PROVIDED BY CASCADIA MUST BE CONFIRMED FOR SPECIFIC PROJECTS.

**NOTE:** NAIL FLANGE IS CONTINUOUS

<b>CASCADIA WINDOWS LTD.</b> #101-5350 275TH STREET LANGLEY, BC, CANADA V4W 0C1	DRAWING TITLE: <b>UNIVERSAL SERIES - WINDOW JAMB</b> <b>REVERSED NAIL FLANGE INSTALLATION (CW-NF1)</b>	DRAWING NO.: <b>NF-1.12</b>
	SCALE: 6" = 1'-0"	PATENTED



**NOTE:** THIS DRAFT DETAIL IS FOR GENERAL ARRANGEMENT PURPOSES ONLY, AND DOES NOT NECESSARILY REPRESENT A DETAIL THAT IS APPROPRIATE FOR A SPECIFIC PROJECT. PRODUCTS AND ACCESSORIES PROVIDED BY CASCADIA MUST BE CONFIRMED FOR SPECIFIC PROJECTS.

**NOTE:** NAIL FLANGE IS CONTINUOUS

CASCADIA WINDOWS LTD.  
 #101-5350 275TH STREET  
 LANGLEY, BC, CANADA V4W 0C1

DRAWING TITLE: **UNIVERSAL SERIES - WINDOW HEADS**  
**REVERSED NAIL FLANGE INSTALLATION (CW-NF1)**

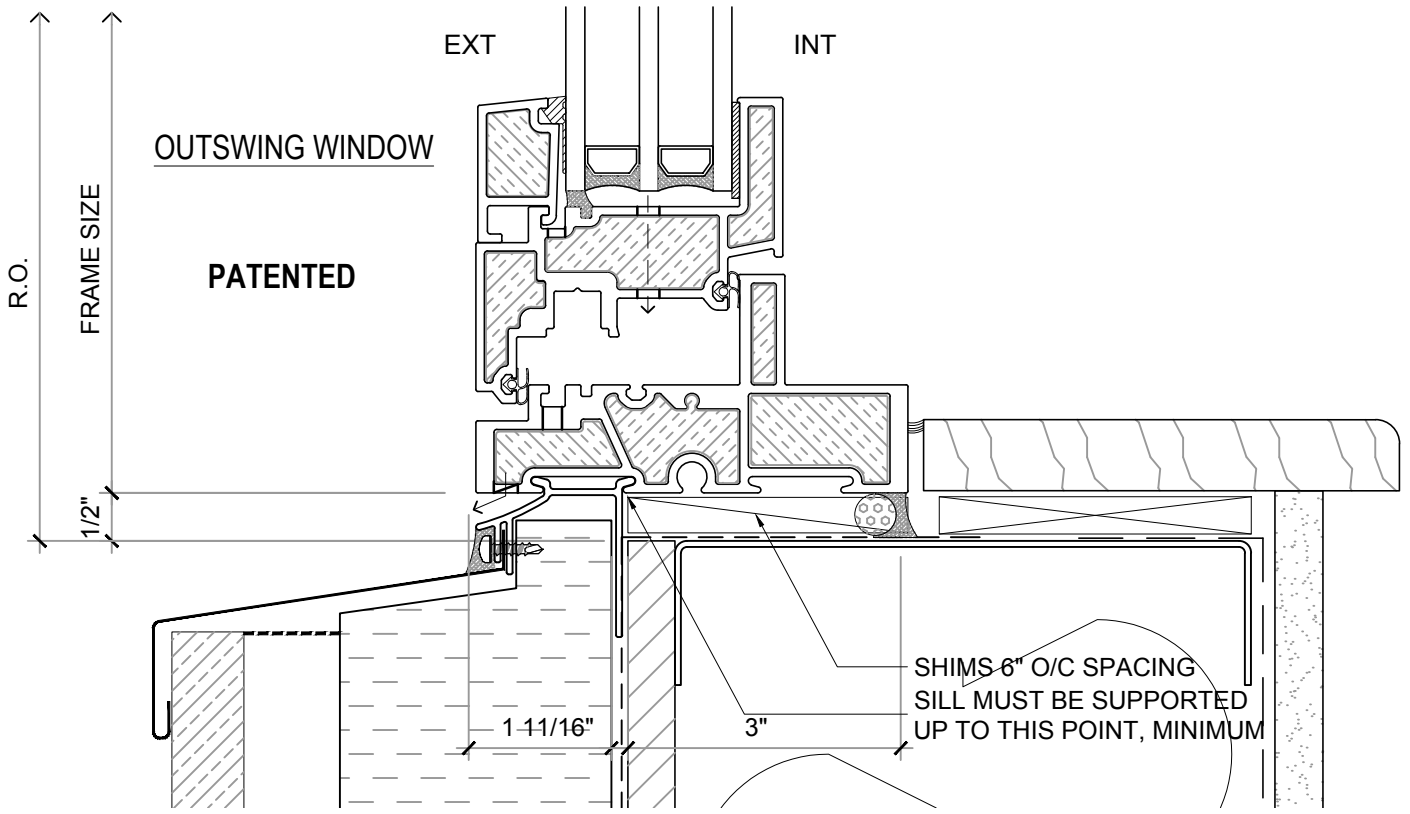
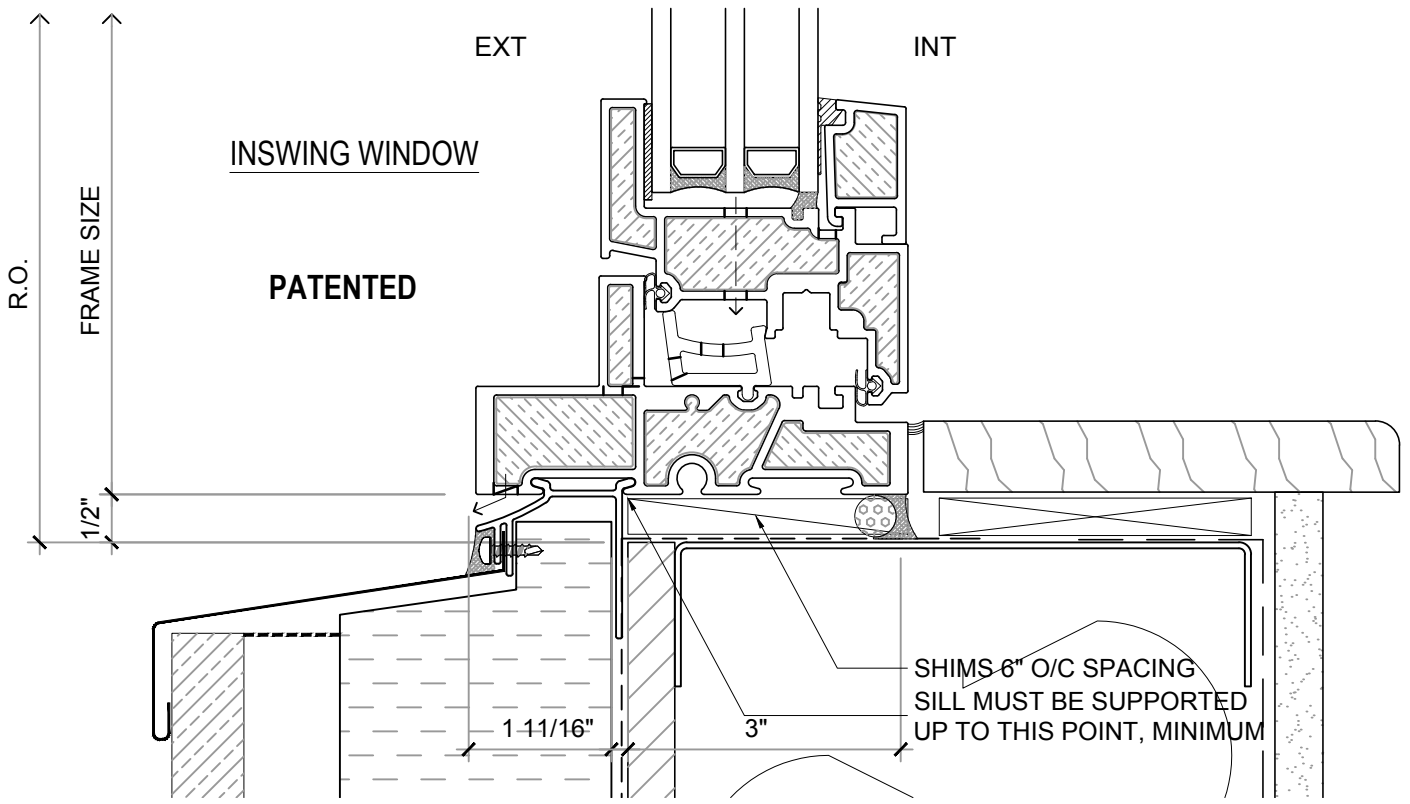
DRAWING NO.: **NF-1.13**

SCALE: 6" = 1'-0"

PATENTED

DATE: 16 MAY, 2018

DRAWN BY: CP



**NOTE:** THIS DRAFT DETAIL IS FOR GENERAL ARRANGEMENT PURPOSES ONLY, AND DOES NOT NECESSARILY REPRESENT A DETAIL THAT IS APPROPRIATE FOR A SPECIFIC PROJECT. PRODUCTS AND ACCESSORIES PROVIDED BY CASCADIA MUST BE CONFIRMED FOR SPECIFIC PROJECTS.

**NOTE:** NAIL FLANGE IS CONTINUOUS

**CASCADIA WINDOWS LTD.**  
 #101-5350 275TH STREET  
 LANGLEY, BC, CANADA V4W 0C1

DRAWING TITLE: **UNIVERSAL SERIES - WINDOW SILLS**  
**REVERSED NAIL FLANGE INSTALLATION ( CW-NF3)**

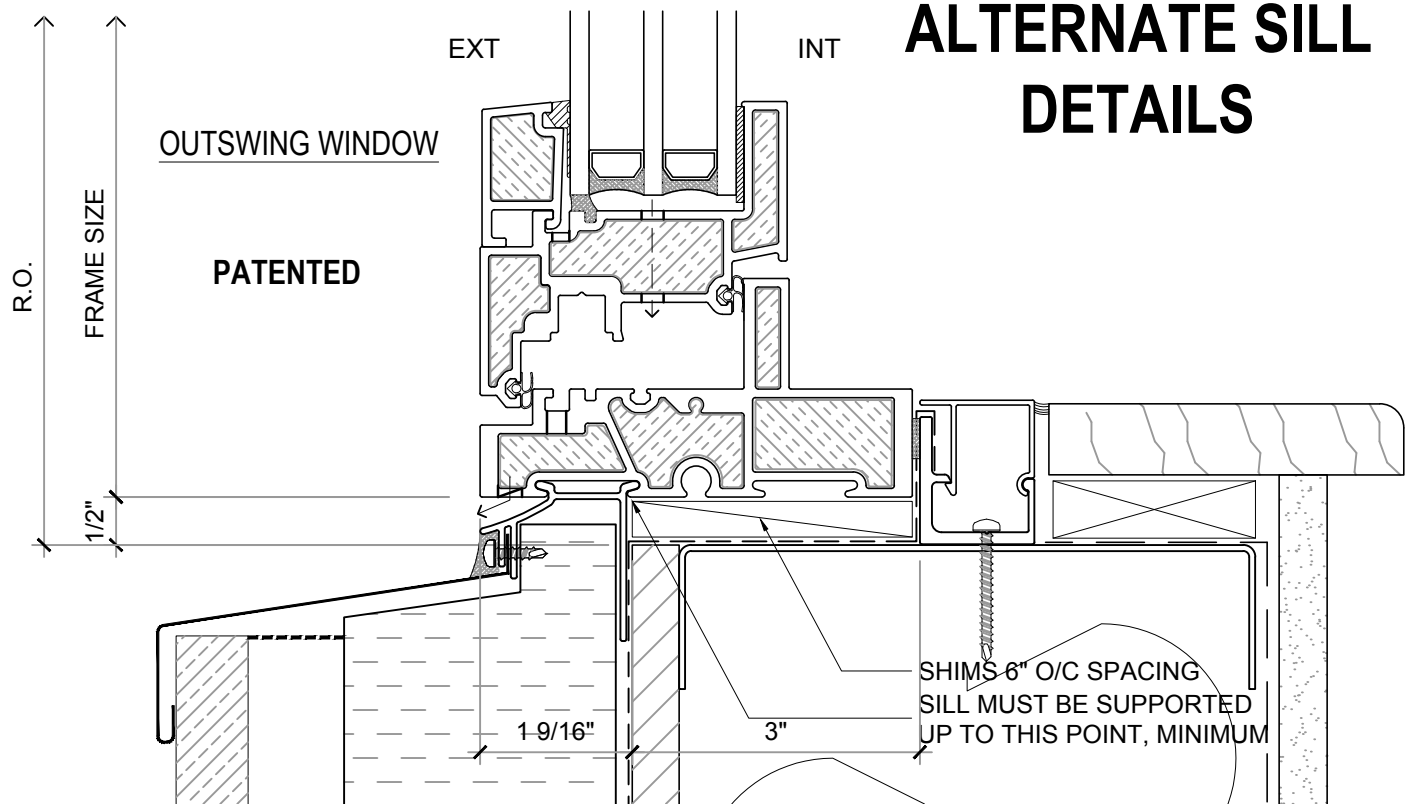
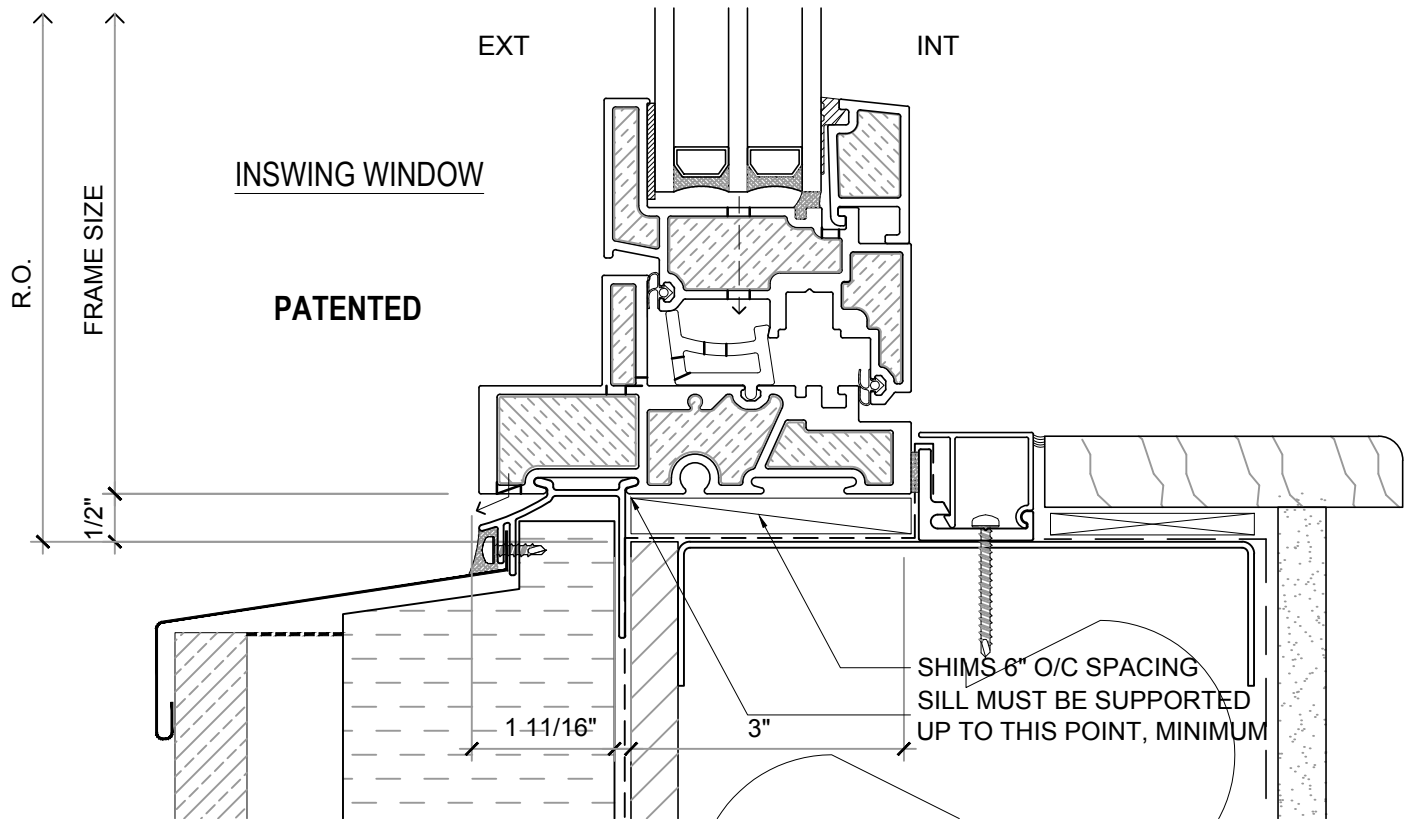
DRAWING NO.: **NF-1.14**

SCALE: 6" = 1'-0"

PATENTED

DATE: 16 MAY, 2018

DRAWN BY: CP



## ALTERNATE SILL DETAILS

**NOTE:** THIS DRAFT DETAIL IS FOR GENERAL ARRANGEMENT PURPOSES ONLY, AND DOES NOT NECESSARILY REPRESENT A DETAIL THAT IS APPROPRIATE FOR A SPECIFIC PROJECT. PRODUCTS AND ACCESSORIES PROVIDED BY CASCADIA MUST BE CONFIRMED FOR SPECIFIC PROJECTS.

**NOTE:** NAIL FLANGE IS CONTINUOUS

CASCADIA WINDOWS LTD.  
 #101-5350 275TH STREET  
 LANGLEY, BC, CANADA V4W 0C1

DRAWING  
 TITLE:

UNIVERSAL SERIES - WINDOW SILLS  
 REVERSED NAIL FLANGE INSTALLATION ( CW-NF3)

DRAWING NO.:

NF-1.14A

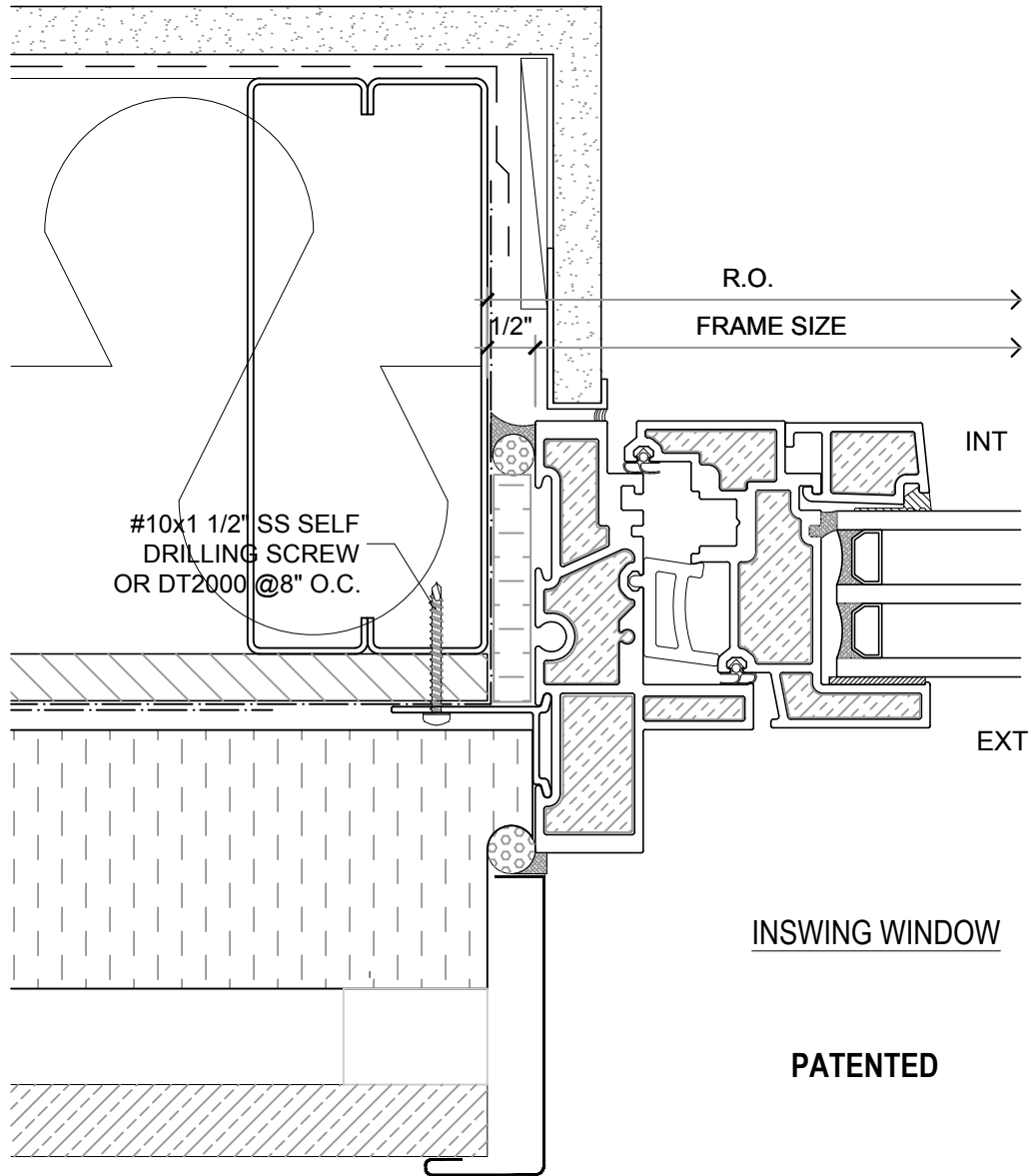
SCALE: 6" = 1'-0"

PATENTED

DATE: 16 MAY, 2018

DRAWN BY: CP

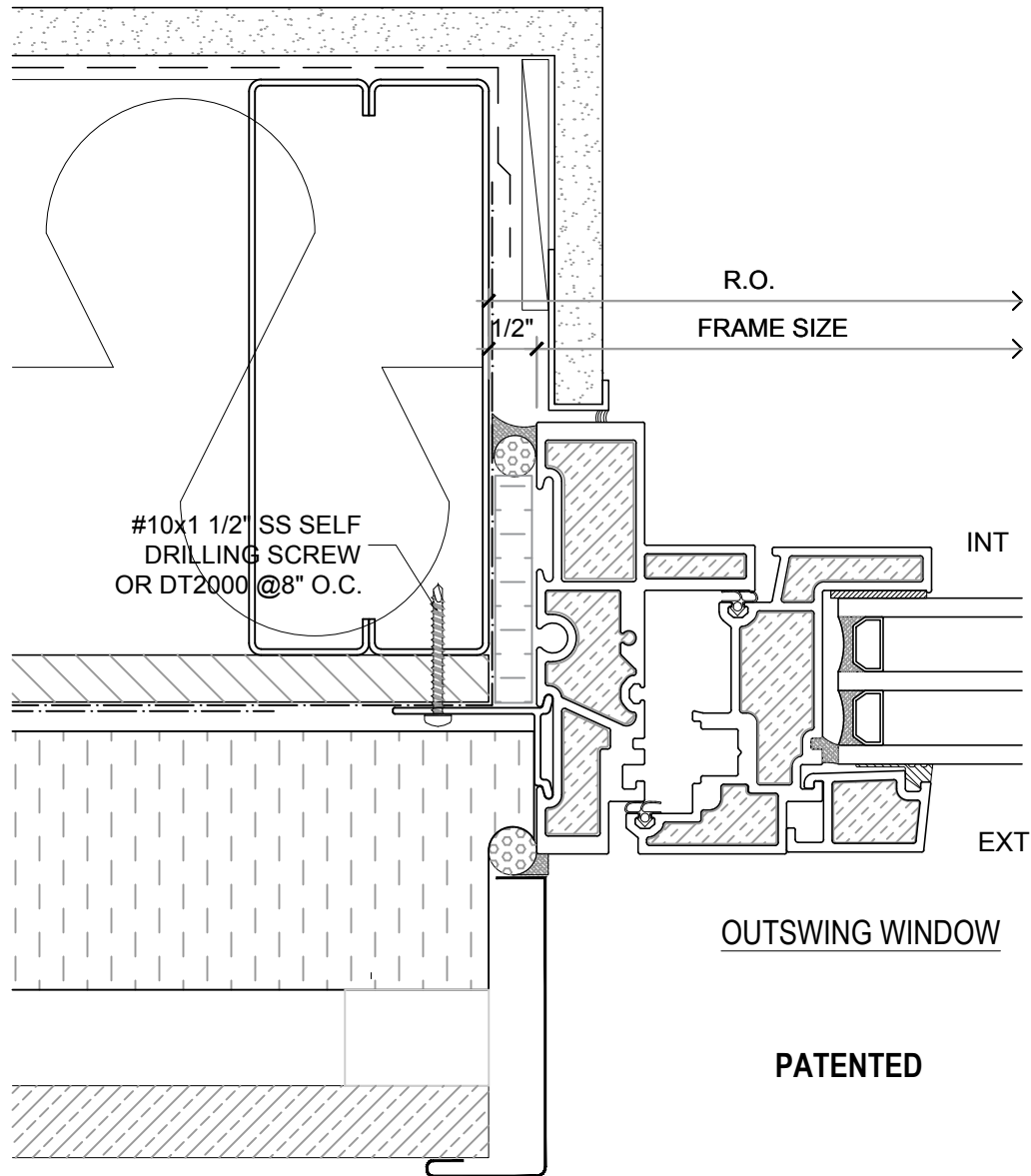




**NOTE:** THIS DRAFT DETAIL IS FOR GENERAL ARRANGEMENT PURPOSES ONLY, AND DOES NOT NECESSARILY REPRESENT A DETAIL THAT IS APPROPRIATE FOR A SPECIFIC PROJECT. PRODUCTS AND ACCESSORIES PROVIDED BY CASCADIA MUST BE CONFIRMED FOR SPECIFIC PROJECTS.

**NOTE:** NAIL FLANGE IS CONTINUOUS

<b>CASCADIA WINDOWS LTD.</b> #101-5350 275TH STREET LANGLEY, BC, CANADA V4W 0C1	DRAWING TITLE: <b>UNIVERSAL SERIES - WINDOW JAMB          REVERSED NAIL FLANGE INSTALLATION (CW-NF1)</b>	DRAWING NO.: <b>NF-1.15</b>
	SCALE: 6" = 1'-0"	PATENTED
		DRAWN BY: CP



**NOTE:** THIS DRAFT DETAIL IS FOR GENERAL ARRANGEMENT PURPOSES ONLY, AND DOES NOT NECESSARILY REPRESENT A DETAIL THAT IS APPROPRIATE FOR A SPECIFIC PROJECT. PRODUCTS AND ACCESSORIES PROVIDED BY CASCADIA MUST BE CONFIRMED FOR SPECIFIC PROJECTS.

**NOTE:** NAIL FLANGE IS CONTINUOUS

CASCADIA WINDOWS LTD.  
 #101-5350 275TH STREET  
 LANGLEY, BC, CANADA V4W 0C1

DRAWING  
 TITLE:

UNIVERSAL SERIES - WINDOW JAMB  
 REVERSED NAIL FLANGE INSTALLATION (CW-NF1)

DRAWING NO.:

NF-1.16

SCALE: 6" = 1'-0"

PATENTED

DATE: 16 MAY, 2018

DRAWN BY: CP