

CASCADIA CLIP - HORIZONTAL APPLICATIONS HAT-TRACKS

1. OPTIMIZE SPACING

Before you start, check out Cascadia's online clip calculator to optimize thermal and structural performance, clip spacing and clip quantities.



2. PREPARE THE BACKUP WALL

Prepare the backup wall according to project drawings.

Mark stud locations.

Mark vertical spacing of hat-tracks as dictated by the cladding engineer shop drawings, project drawings or Cascadia's online clip calculator.



3. START A HAT-TRACK ROW

Fasten an end clip and hat-track to the backup wall using a single fastener.

Leave a small gap between the fastener head and the hat-track to accommodate adjustments.

It's important to leave fasteners 'loose' if adjustments may be needed. Backing out and re-tightening fasteners may compromise screw pull out capacity.

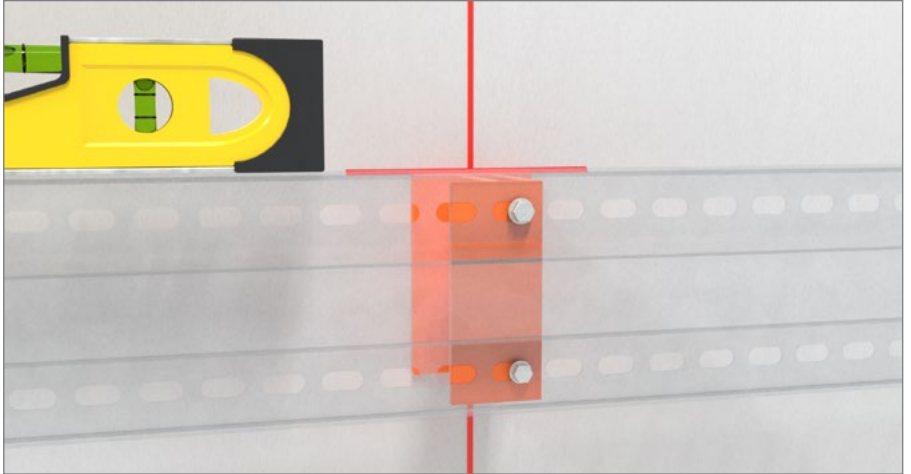


CASCADIA CLIP - HORIZONTAL APPLICATIONS HAT-TRACKS

4. COMPLETE HAT-TRACK ROW

Move along the hat-track fastening each clip, ensuring the hat-track is level.

Install subsequent rows of hat-tracks.

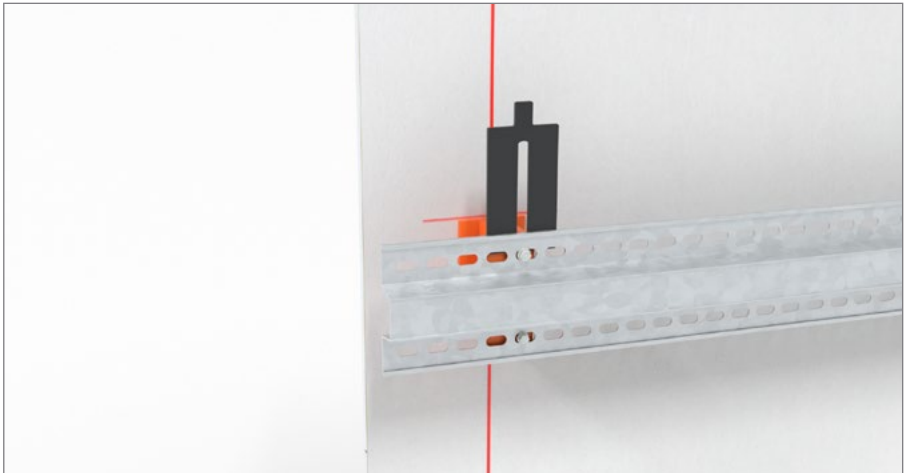


5. CHECK ROWS FOR PLUMB

As you install subsequent rows, check the hat-tracks are plumb.

Where needed, use a Cascadia Shim to adjust the hat-track to achieve plumb.

Cascadia Shims are available in 1/8" and 1/4" depths.

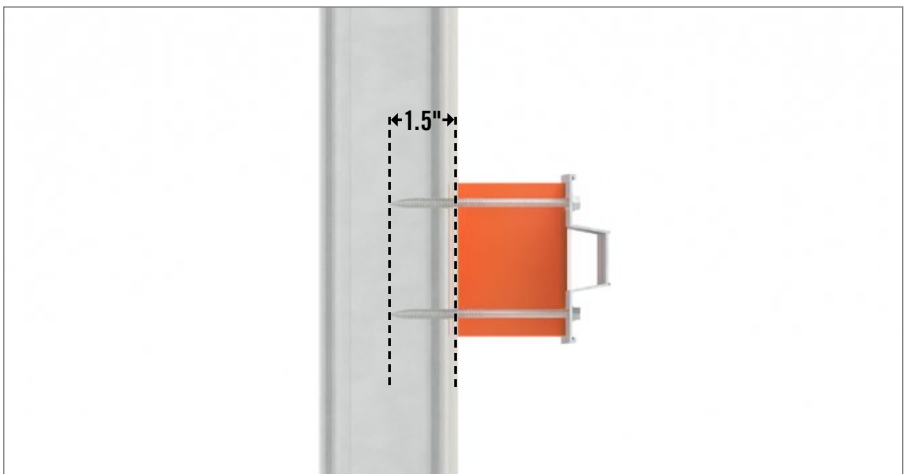


6. SECURE FASTENERS

Finish securing fasteners tight to the hat-track.

Ensure both fasteners penetrate the backup wall to the stud.

Fasteners must be at least 1.5" longer than the clip.



CASCADIA CLIP - HORIZONTAL APPLICATIONS

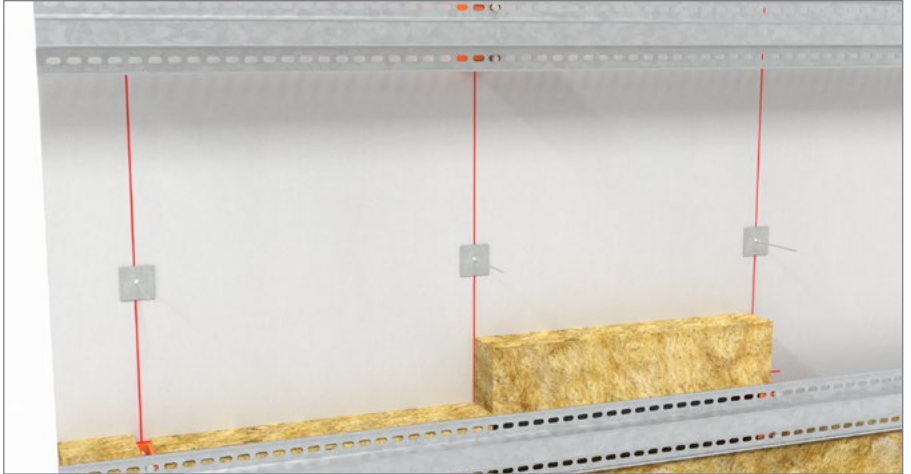
HAT-TRACKS

7. INSTALL INSULATION BEHIND HAT-TRACKS

SEMI-RIGID INSULATION

Install insulation retention system in accordance with manufacturer's instructions.

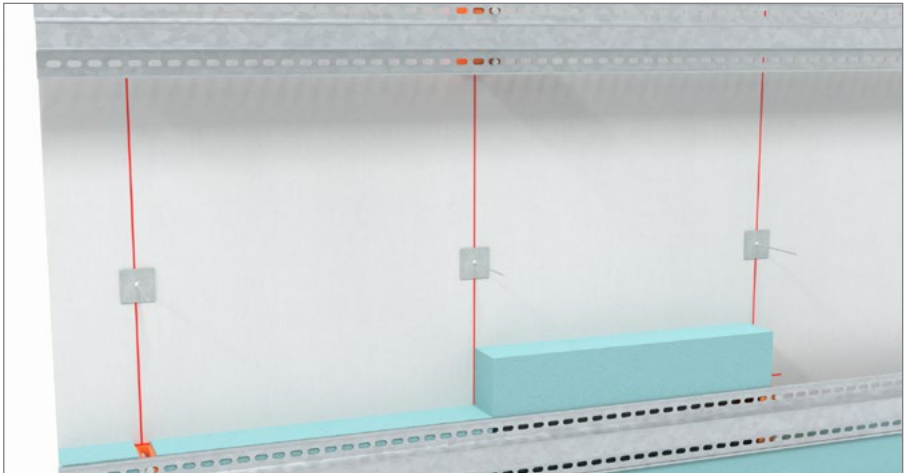
Cut strips of semi-rigid insulation and fit behind the hat-tracks.



RIGID INSULATION

Install insulation retention system in accordance with manufacturer's instructions.

Cut strips of rigid insulation and fit behind the hat-tracks.

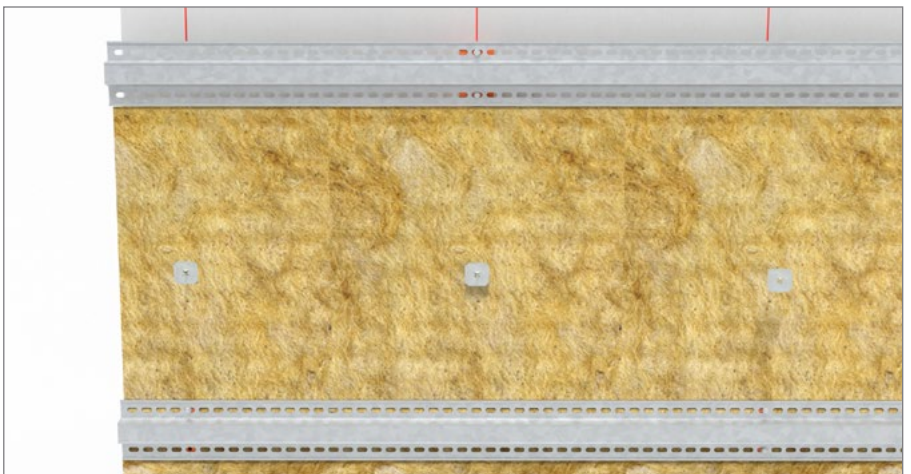


8. INSTALL INSULATION

SEMI-RIGID INSULATION

Install semi-rigid insulation between hat-track rows.

Ensure insulation fits tightly between rows.



CASCADIA CLIP - HORIZONTAL APPLICATIONS

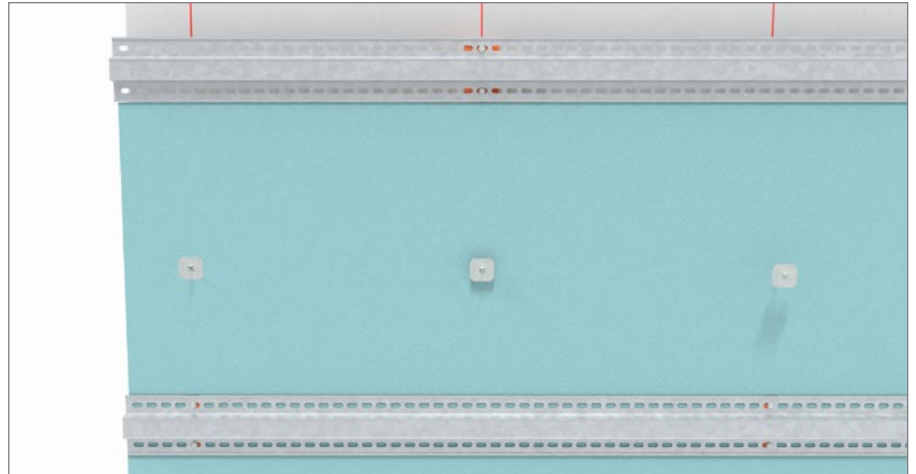
HAT-TRACKS

8. INSTALL INSULATION

RIGID INSULATION

Install rigid insulation between hat-track rows.

Ensure insulation fits tightly between rows.



8. INSTALL INSULATION

Proceed with cladding installation in accordance with shop drawings and manufacturer's instructions.

