

NOTE: THIS DETAIL IS FOR GENERAL ARRANGEMENT PURPOSES ONLY, AND DOES NOT NECESSARILY REPRESENT A DETAIL THAT IS APPROPRIATE FOR A SPECIFIC PROJECT. PRODUCTS AND ACCESSORIES PROVIDED BY CASCADIA MUST BE CONFIRMED FOR SPECIFIC PROJECTS.

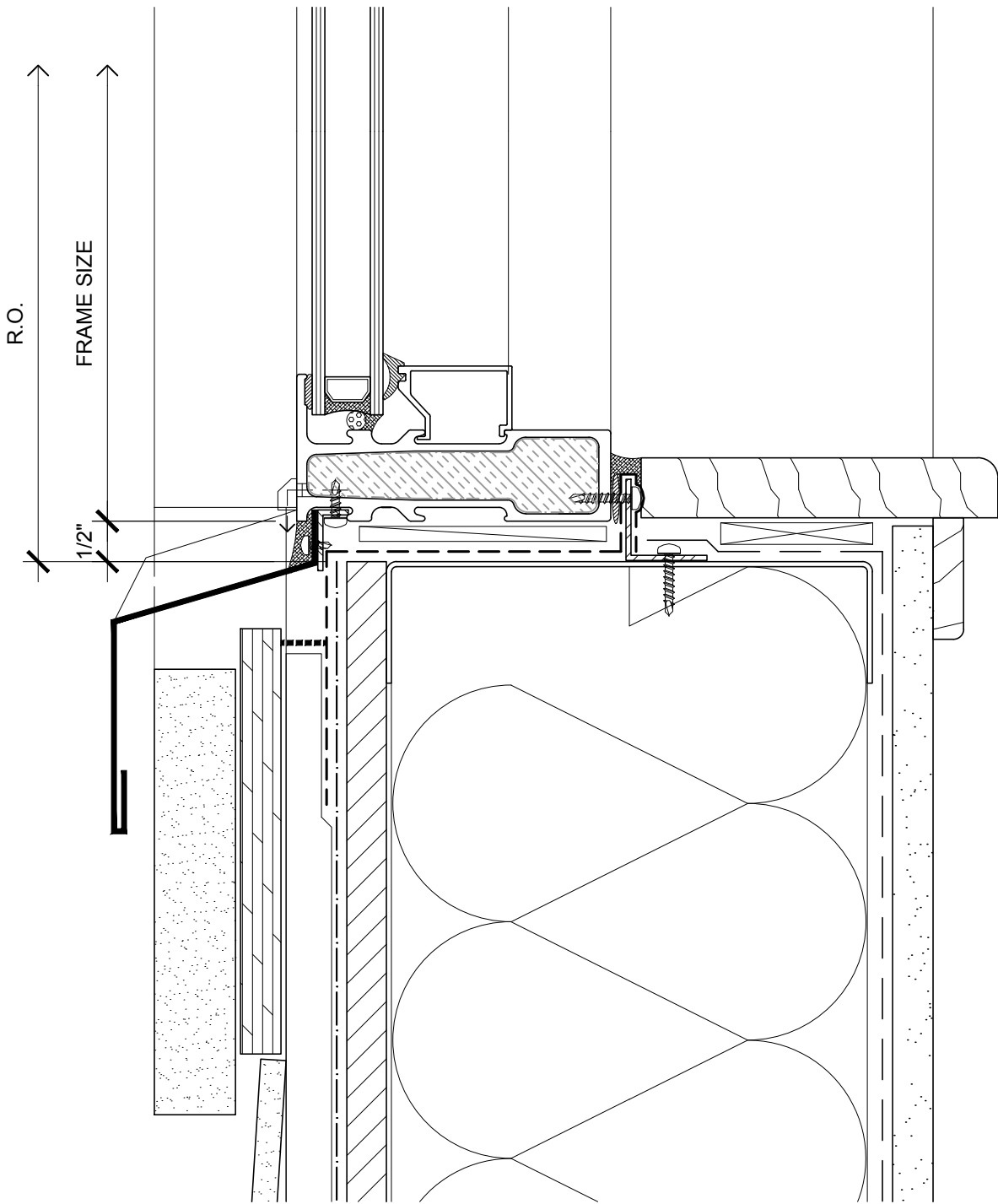
SECTION

NOTE: SUB-CLIPS AND ANCHOR CLIPS AT HEAD AND JAMBS ARE INTERMITTENT



CASCADIA WINDOWS LTD.
2160 CLOUETTER WAY
LANGLEY, BC CANADA V4W 3Y5

SERIES: SERIES 400 STRIP WINDOW WITH CLIPS [CL] AND INTERIOR SILL ANGLE - FLUSH INSTALLATION		DRAWING NO.: 400CL(C)-1.01	
DRAWING TITLE: TYPICAL WINDOW HEAD RAINSCREEN WALL ASSEMBLY, CEMENT BOARD CLADDING (C)		PROJECT NO.: -	
ISSUE	DESCRIPTION	DATE	SCALE: 6" = 1'-0"
1	VERSION 1	13 JAN, 2009	DATE: 13 JAN, 2009
2	VERSION 2	16 FEB, 2009	DRAWN BY: RK
			CHECKED BY: -



NOTE: THIS DETAIL IS FOR GENERAL ARRANGEMENT PURPOSES ONLY, AND DOES NOT NECESSARILY REPRESENT A DETAIL THAT IS APPROPRIATE FOR A SPECIFIC PROJECT. PRODUCTS AND ACCESSORIES PROVIDED BY CASCADIA MUST BE CONFIRMED FOR SPECIFIC PROJECTS.

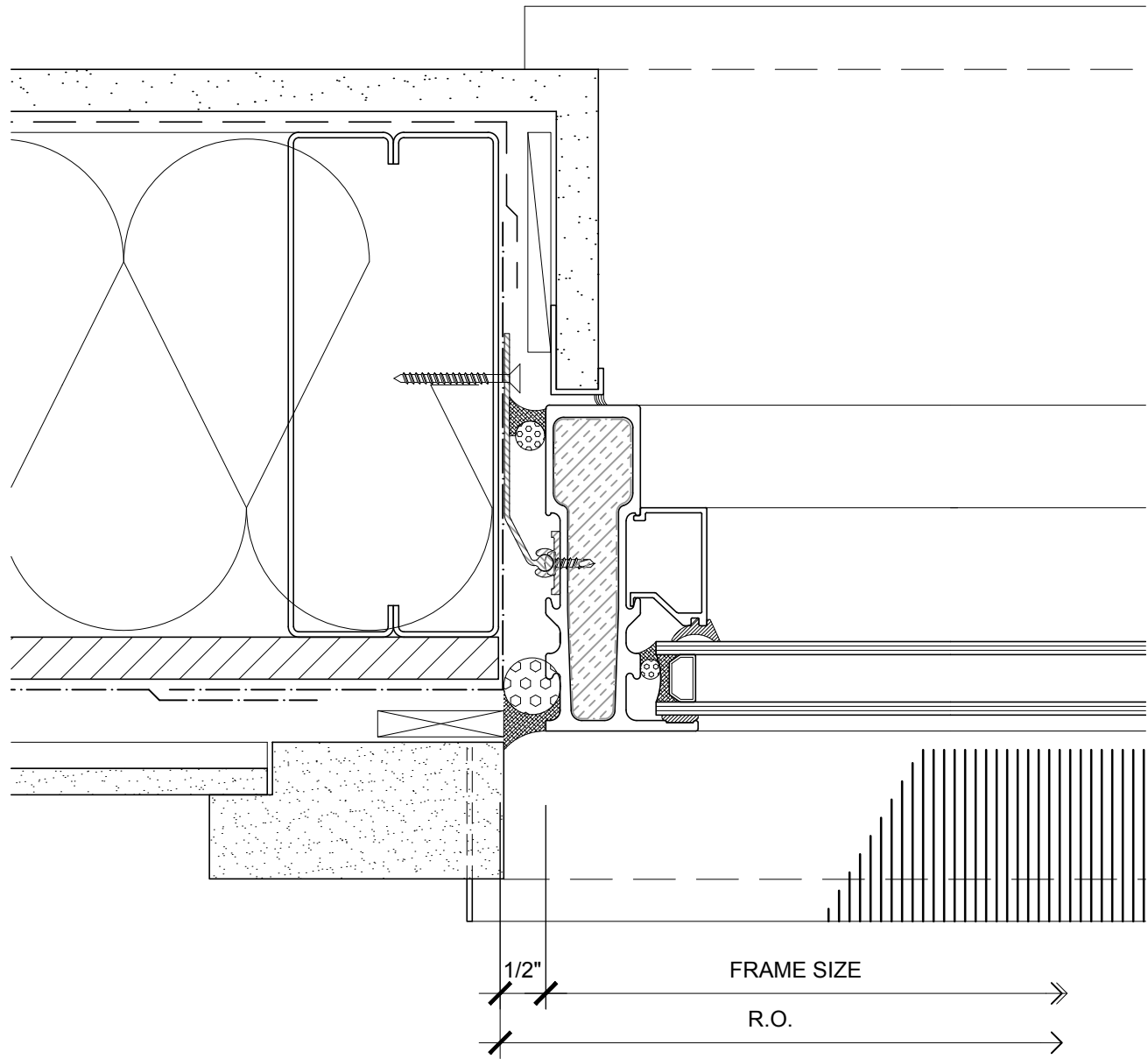
SECTION

NOTE: PROVIDE WATERPROOF SUB-SILL WITH POSITIVE DRAINAGE TO EXTERIOR



CASCADIA WINDOWS LTD.
 2160 CLOUDESTER WAY
 LANGLEY, BC CANADA V4W 3Y5

SERIES: SERIES 400 STRIP WINDOW WITH CLIPS [CL] AND INTERIOR SILL ANGLE - FLUSH INSTALLATION		DRAWING NO.: 400CL(C)-1.02	
DRAWING TITLE: TYPICAL WINDOW SILL RAINSCREEN WALL ASSEMBLY, CEMENT BOARD CLADDING (C)		PROJECT NO.: -	
ISSUE	DESCRIPTION	DATE	SCALE: 6" = 1'-0"
1	VERSION 1	13 JAN, 2009	DATE: 13 JAN, 2009
2	VERSION 2	16 FEB, 2009	DRAWN BY: RK
			CHECKED BY: -



NOTE: THIS DETAIL IS FOR GENERAL ARRANGEMENT PURPOSES ONLY, AND DOES NOT NECESSARILY REPRESENT A DETAIL THAT IS APPROPRIATE FOR A SPECIFIC PROJECT. PRODUCTS AND ACCESSORIES PROVIDED BY CASCADIA MUST BE CONFIRMED FOR SPECIFIC PROJECTS.

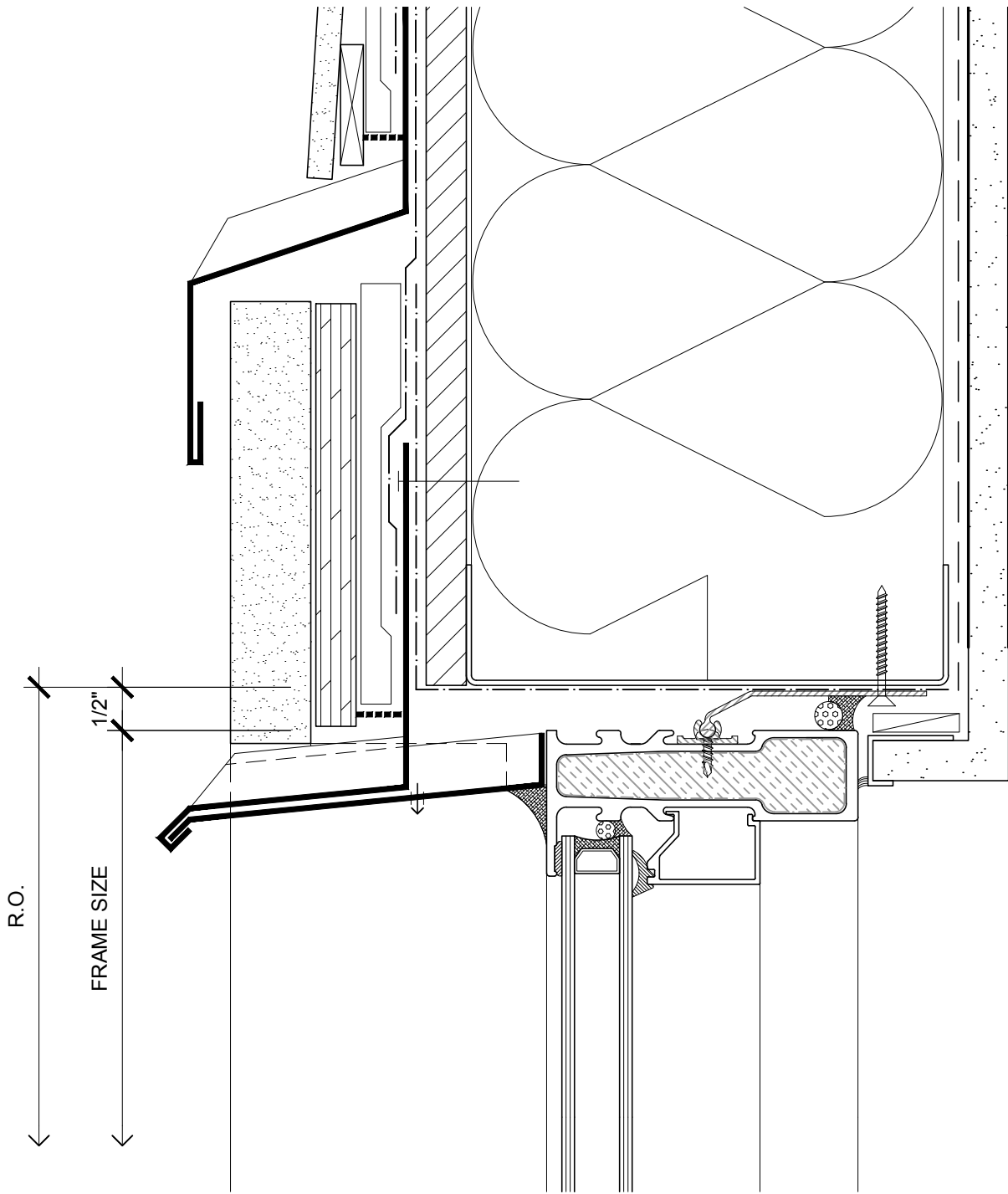
PLAN

NOTE: BRICK MOULD TRIM AND FRAME EXTENDER TRIM AVAILABLE



CASCADIA WINDOWS LTD.
2460 CLOUDESTER WAY
LANGLEY, BC CANADA V4W 3Y5

SERIES:		SERIES 400 STRIP WINDOW		DRAWING NO.:	400CL(C)-1.03
		WITH CLIPS [CL] AND INTERIOR SILL ANGLE - FLUSH INSTALLATION			
DRAWING TITLE:		TYPICAL WINDOW JAMB		PROJECT NO.:	-
		RAINSCREEN WALL ASSEMBLY, CEMENT BOARD CLADDING (C)			
ISSUE	DESCRIPTION	DATE	SCALE:	6" = 1'-0"	
1	VERSION 1	13 JAN, 2009	DATE:	13 JAN, 2009	
2	VERSION 2	16 FEB, 2009	DRAWN BY:	RK	
			CHECKED BY:	-	



NOTE: THIS DETAIL IS FOR GENERAL ARRANGEMENT PURPOSES ONLY, AND DOES NOT NECESSARILY REPRESENT A DETAIL THAT IS APPROPRIATE FOR A SPECIFIC PROJECT. PRODUCTS AND ACCESSORIES PROVIDED BY CASCADIA MUST BE CONFIRMED FOR SPECIFIC PROJECTS.

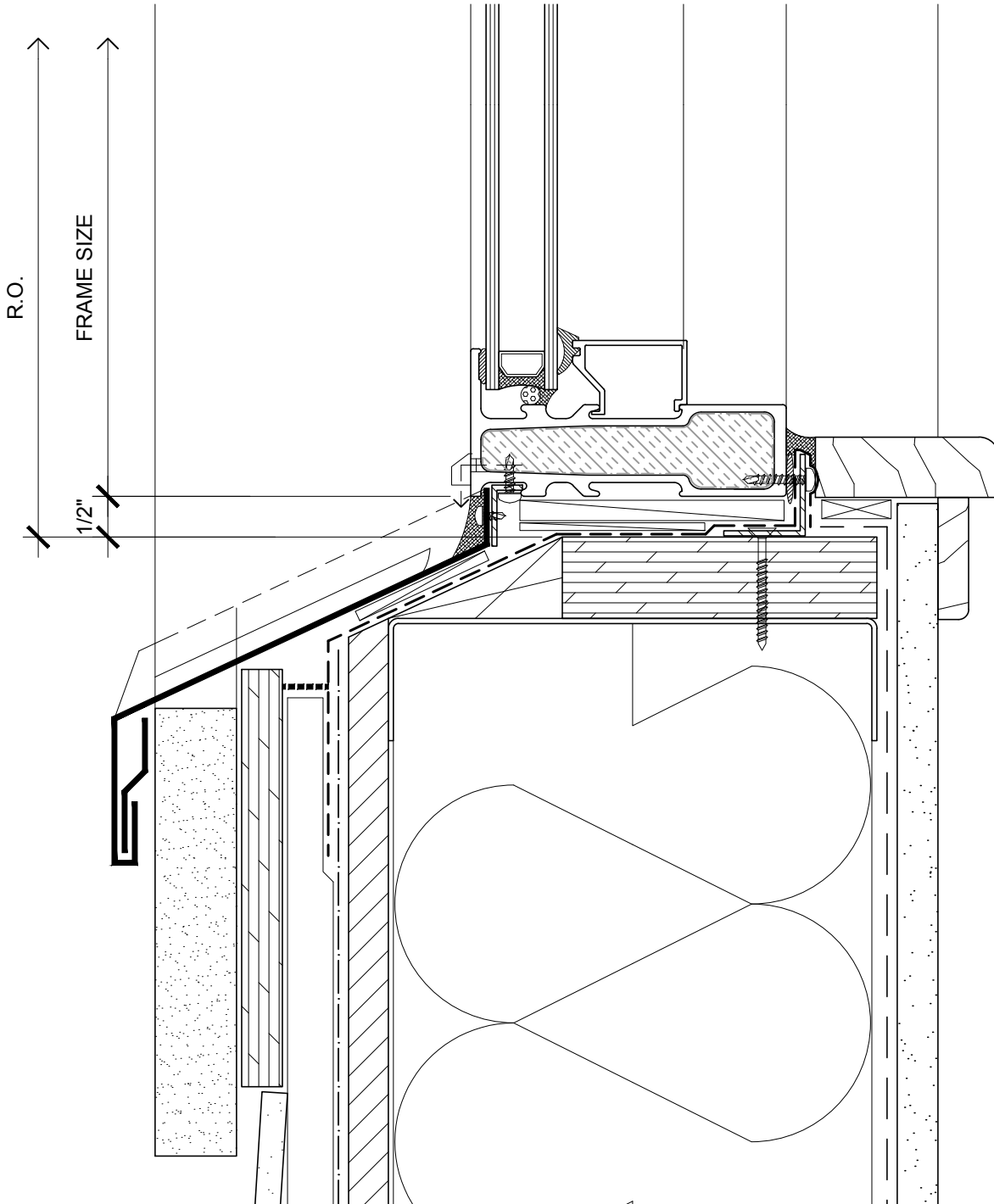
SECTION

NOTE: SUB-CLIPS AND ANCHOR CLIPS AT HEAD AND JAMBS ARE INTERMITTENT



CASCADIA WINDOWS LTD.
2760 CLOUDESTER WAY
LANGLEY, BC CANADA V4W 3Y5

SERIES:		SERIES 400 STRIP WINDOW		DRAWING NO.:	
		WITH CLIPS [CL] AND INTERIOR SILL ANGLE - RECESSED INSTALLATION		400CL(C)-1.04	
DRAWING TITLE:		TYPICAL WINDOW HEAD		PROJECT NO.:	
		RAINSCREEN WALL ASSEMBLY, CEMENT BOARD CLADDING (C)		-	
ISSUE	DESCRIPTION	DATE	SCALE:	6" = 1'-0"	
1	VERSION 1	13 JAN, 2009	DATE:	13 JAN, 2009	
2	VERSION 2	16 FEB, 2009	DRAWN BY:	RK	
			CHECKED BY:	-	



NOTE: THIS DETAIL IS FOR GENERAL ARRANGEMENT PURPOSES ONLY, AND DOES NOT NECESSARILY REPRESENT A DETAIL THAT IS APPROPRIATE FOR A SPECIFIC PROJECT. PRODUCTS AND ACCESSORIES PROVIDED BY CASCADIA MUST BE CONFIRMED FOR SPECIFIC PROJECTS.

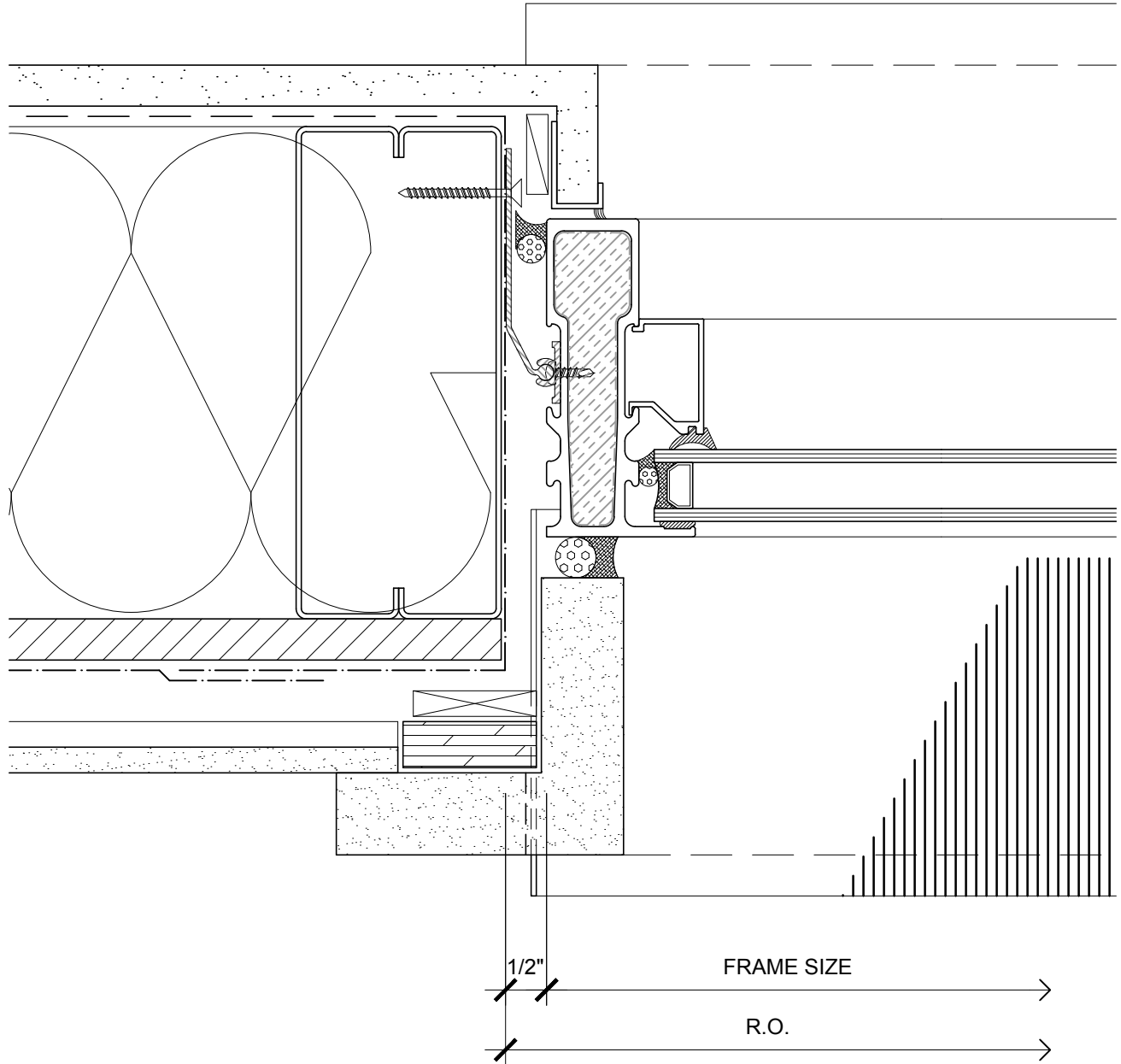
SECTION

NOTE: PROVIDE WATERPROOF SUB-SILL WITH POSITIVE DRAINAGE TO EXTERIOR



CASCADIA WINDOWS LTD.
2460 CLOUDESTER WAY
LANGLEY, BC CANADA V4W 3Y5

SERIES: SERIES 400 STRIP WINDOW WITH CLIPS [CL] AND INTERIOR SILL ANGLE - RECESSED INSTALLATION		DRAWING NO.: 400CL(C)-1.05	
DRAWING TITLE: TYPICAL WINDOW SILL RAINSCREEN WALL ASSEMBLY, CEMENT BOARD CLADDING (C)		PROJECT NO.: -	
ISSUE	DESCRIPTION	DATE	SCALE: 6" = 1'-0"
1	VERSION 1	13 JAN, 2009	DATE: 13 JAN, 2009
2	VERSION 2	16 FEB, 2009	DRAWN BY: RK
			CHECKED BY: -



NOTE: THIS DETAIL IS FOR GENERAL ARRANGEMENT PURPOSES ONLY, AND DOES NOT NECESSARILY REPRESENT A DETAIL THAT IS APPROPRIATE FOR A SPECIFIC PROJECT. PRODUCTS AND ACCESSORIES PROVIDED BY CASCADIA MUST BE CONFIRMED FOR SPECIFIC PROJECTS.

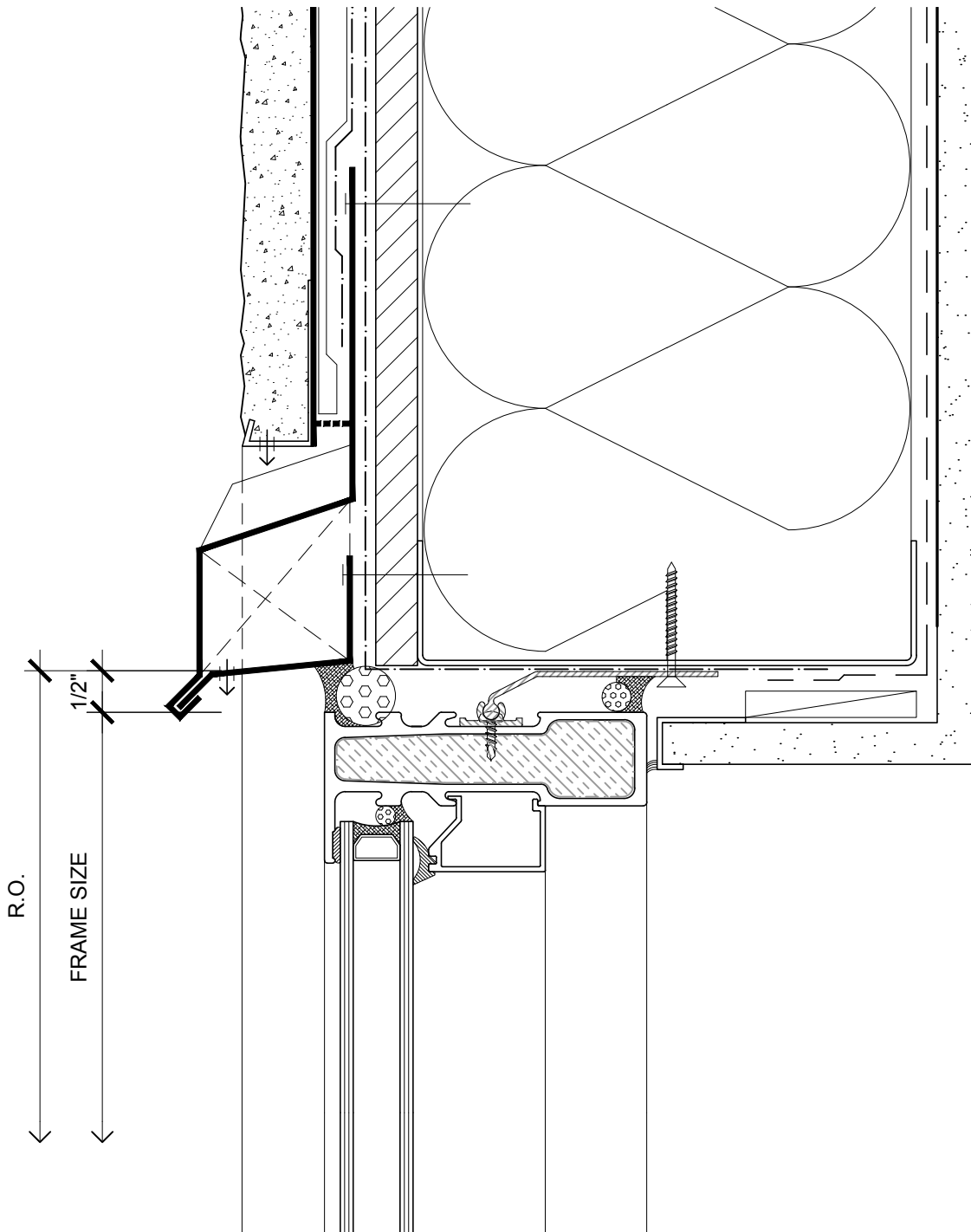
PLAN

NOTE: BRICK MOULD TRIM AND FRAME EXTENDER TRIM AVAILABLE



CASCADIA WINDOWS LTD.
2160 CLIFTON AVENUE
LANGLEY, BC CANADA V4W 3Y5

SERIES:		SERIES 400 STRIP WINDOW		DRAWING NO.:	400CL(C)-1.06
		WITH CLIPS [CL] AND INTERIOR SILL ANGLE - RECESSED INSTALLATION			
DRAWING TITLE:		TYPICAL WINDOW JAMB		PROJECT NO.:	-
		RAINSCREEN WALL ASSEMBLY, CEMENT BOARD CLADDING (C)			
ISSUE	DESCRIPTION	DATE	SCALE:	6" = 1'-0"	
1	VERSION 1	13 JAN, 2009	DATE:	13 JAN, 2009	
2	VERSION 2	16 FEB, 2009	DRAWN BY:	RK	
			CHECKED BY:	-	



NOTE: THIS DETAIL IS FOR GENERAL ARRANGEMENT PURPOSES ONLY, AND DOES NOT NECESSARILY REPRESENT A DETAIL THAT IS APPROPRIATE FOR A SPECIFIC PROJECT. PRODUCTS AND ACCESSORIES PROVIDED BY CASCADIA MUST BE CONFIRMED FOR SPECIFIC PROJECTS.

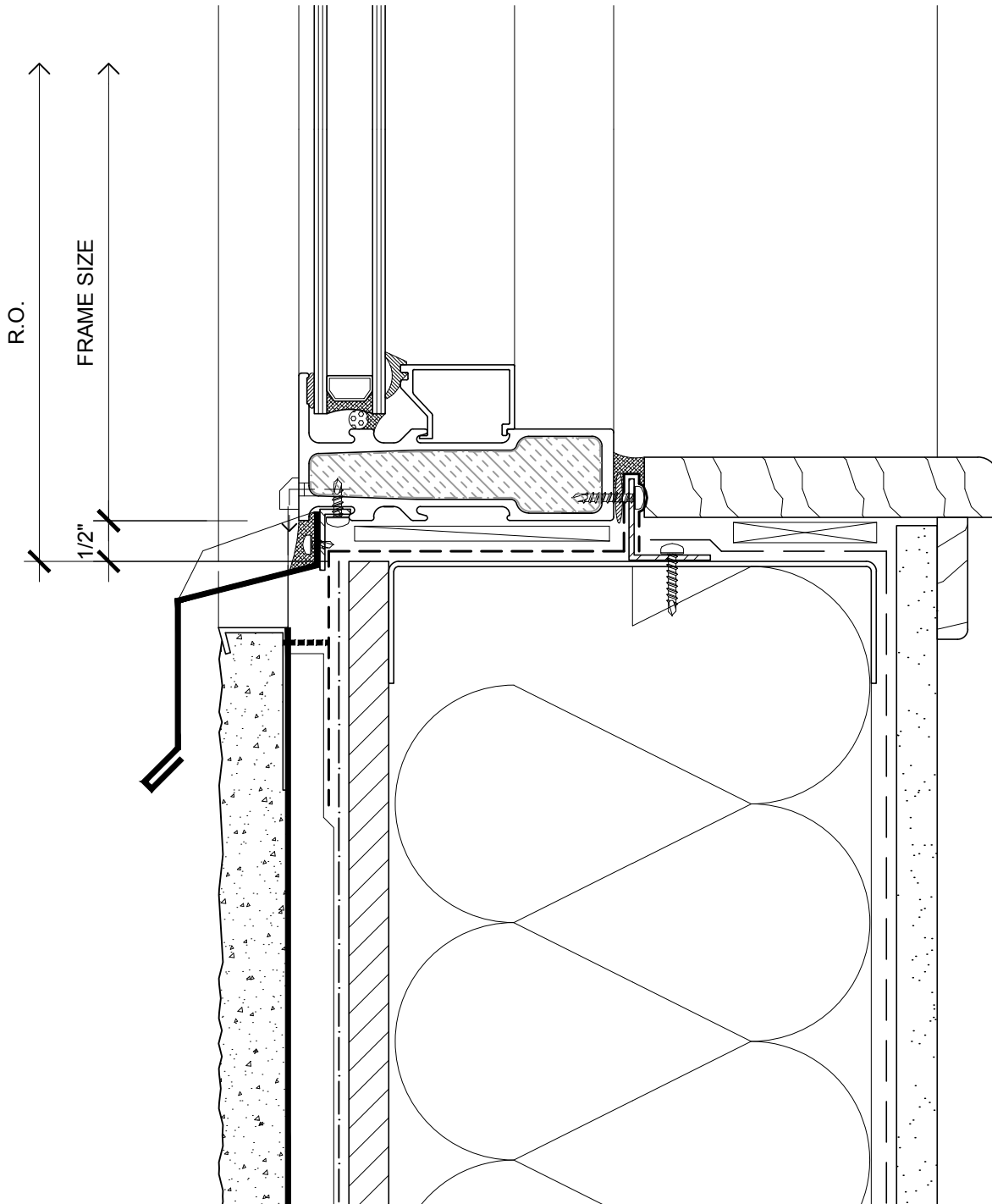
SECTION

NOTE: SUB-CLIPS AND ANCHOR CLIPS AT HEAD AND JAMBS ARE INTERMITTENT



CASCADIA WINDOWS LTD.
2760 CLOUDESTER WAY
LANGLEY, BC CANADA V4W 3Y5

SERIES:		SERIES 400 STRIP WINDOW		DRAWING NO.:	400CL(S)-1.01
		WITH CLIPS [CL] AND INTERIOR SILL ANGLE - FLUSH INSTALLATION			
DRAWING TITLE:		TYPICAL WINDOW HEAD		PROJECT NO.:	
		RAINSCREEN WALL ASSEMBLY, STUCCO CLADDING (S)		-	
ISSUE	DESCRIPTION	DATE	SCALE:	6" = 1'-0"	
1	VERSION 1	13 JAN, 2009	DATE:	13 JAN, 2009	
2	VERSION 2	16 FEB, 2009	DRAWN BY:	RK	
			CHECKED BY:	-	



NOTE: THIS DETAIL IS FOR GENERAL ARRANGEMENT PURPOSES ONLY, AND DOES NOT NECESSARILY REPRESENT A DETAIL THAT IS APPROPRIATE FOR A SPECIFIC PROJECT. PRODUCTS AND ACCESSORIES PROVIDED BY CASCADIA MUST BE CONFIRMED FOR SPECIFIC PROJECTS.

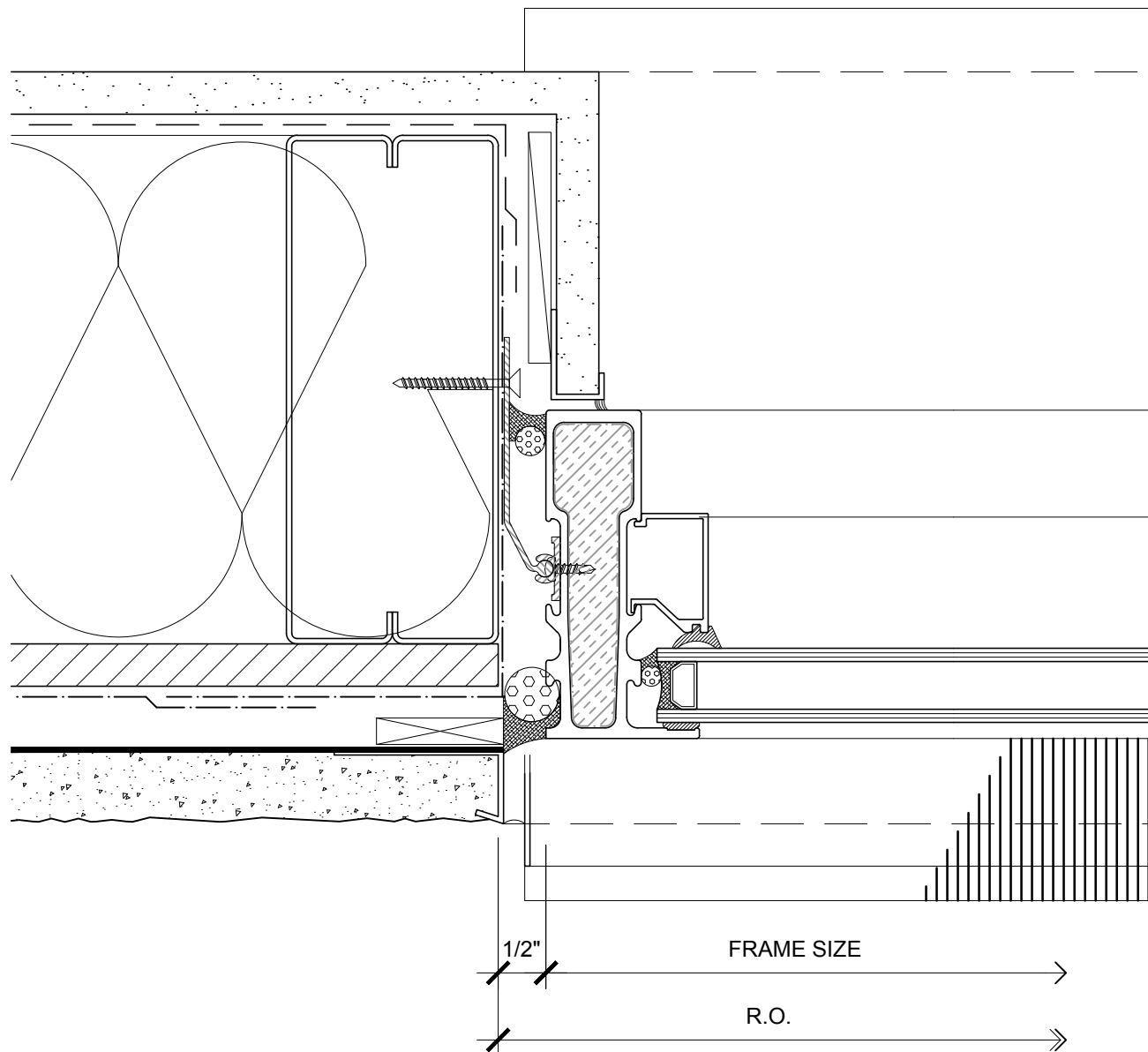
SECTION

NOTE: PROVIDE WATERPROOF SUB-SILL WITH POSITIVE DRAINAGE TO EXTERIOR



CASCADIA WINDOWS LTD.
2760 CLOUDESTER WAY
LANGLEY, BC CANADA V4W 3Y5

SERIES: SERIES 400 STRIP WINDOW WITH CLIPS [CL] AND INTERIOR SILL ANGLE - FLUSH INSTALLATION		DRAWING NO.: 400CL(S)-1.02	
DRAWING TITLE: TYPICAL WINDOW SILL RAINSCREEN WALL ASSEMBLY, STUCCO CLADDING (S)		PROJECT NO.: -	
ISSUE	DESCRIPTION	DATE	SCALE: 6" = 1'-0"
1	VERSION 1	13 JAN, 2009	DATE: 13 JAN, 2009
2	VERSION 2	16 FEB, 2009	DRAWN BY: RK
			CHECKED BY: -



NOTE: THIS DETAIL IS FOR GENERAL ARRANGEMENT PURPOSES ONLY, AND DOES NOT NECESSARILY REPRESENT A DETAIL THAT IS APPROPRIATE FOR A SPECIFIC PROJECT. PRODUCTS AND ACCESSORIES PROVIDED BY CASCADIA MUST BE CONFIRMED FOR SPECIFIC PROJECTS.

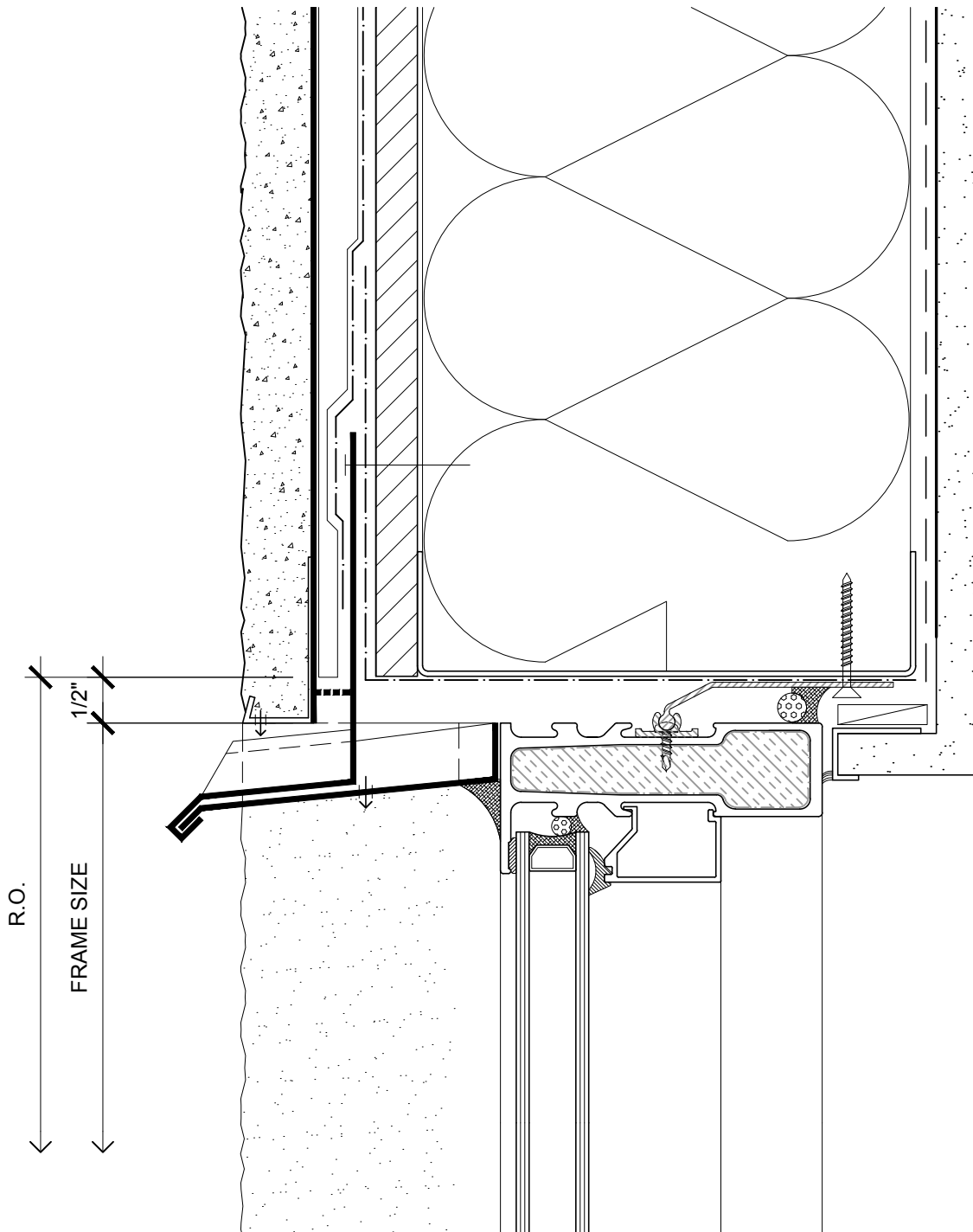
PLAN

NOTE: BRICK MOULD TRIM AND FRAME EXTENDER TRIM AVAILABLE



CASCADIA WINDOWS LTD.
2760 CLOUDESTER WAY
LANGLEY, BC CANADA V4W 3Y5

SERIES: SERIES 400 STRIP WINDOW WITH CLIPS [CL] AND INTERIOR SILL ANGLE - FLUSH INSTALLATION		DRAWING NO.: 400CL(S)-1.03	
DRAWING TITLE: TYPICAL WINDOW JAMB RAINSCREEN WALL ASSEMBLY, STUCCO CLADDING (S)		PROJECT NO.: -	
ISSUE	DESCRIPTION	DATE	SCALE: 6" = 1'-0"
1	VERSION 1	13 JAN, 2009	DATE: 13 JAN, 2009
2	VERSION 2	16 FEB, 2009	DRAWN BY: RK
			CHECKED BY: -



NOTE: THIS DETAIL IS FOR GENERAL ARRANGEMENT PURPOSES ONLY, AND DOES NOT NECESSARILY REPRESENT A DETAIL THAT IS APPROPRIATE FOR A SPECIFIC PROJECT. PRODUCTS AND ACCESSORIES PROVIDED BY CASCADIA MUST BE CONFIRMED FOR SPECIFIC PROJECTS.

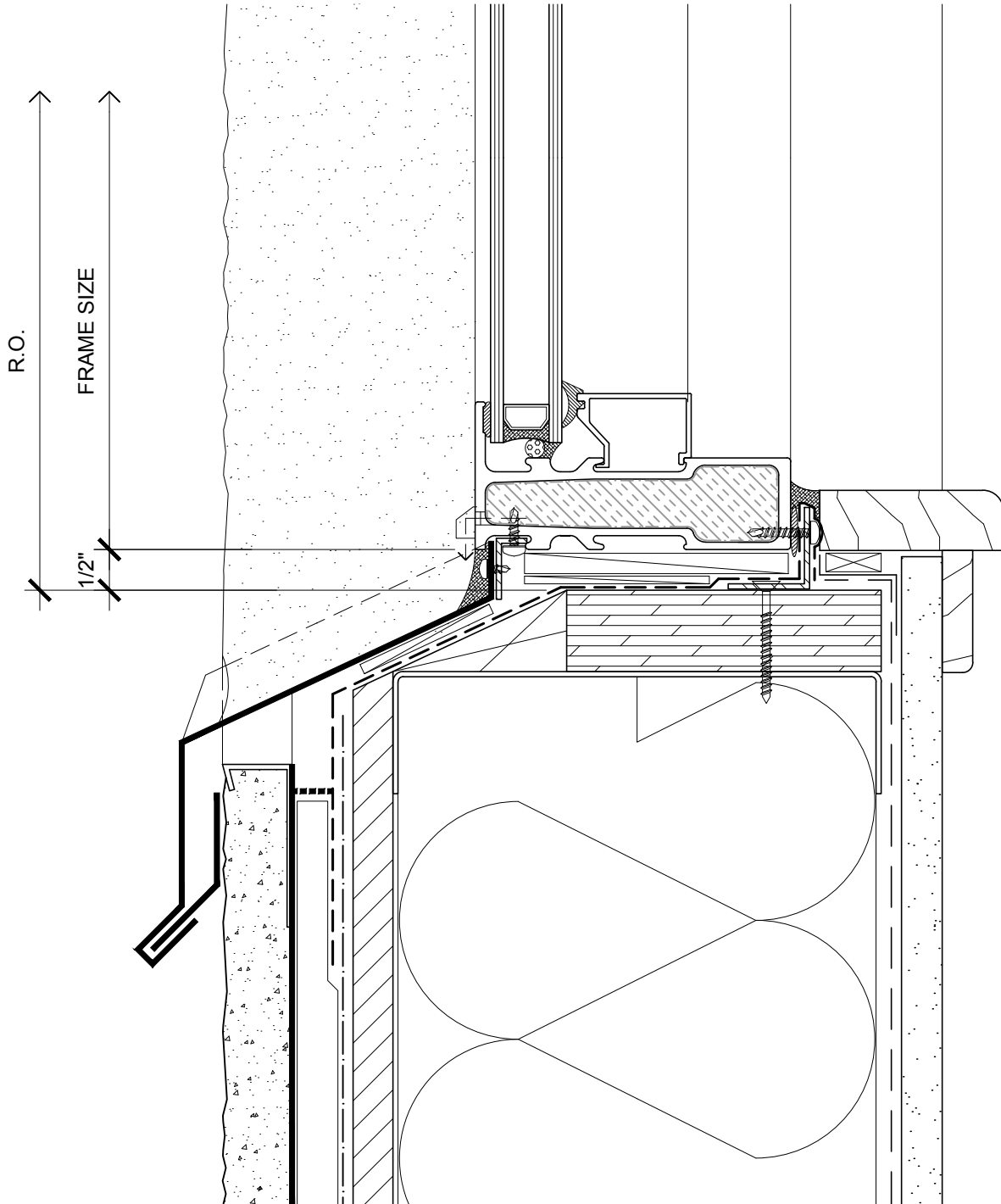
SECTION

NOTE: SUB-CLIPS AND ANCHOR CLIPS AT HEAD AND JAMBS ARE INTERMITTENT



CASCADIA WINDOWS LTD.
2760 CLOUDESTER WAY
LANGLEY, BC CANADA V4W 3Y5

SERIES:		SERIES 400 STRIP WINDOW		DRAWING NO.:	400CL(S)-1.04
		WITH CLIPS [CL] AND INTERIOR SILL ANGLE - RECESSED INSTALLATION			
DRAWING TITLE:		TYPICAL WINDOW HEAD		PROJECT NO.:	
		RAINSCREEN WALL ASSEMBLY, STUCCO CLADDING (S)		-	
ISSUE	DESCRIPTION	DATE	SCALE:	6" = 1'-0"	
1	VERSION 1	13 JAN, 2009	DATE:	13 JAN, 2009	
2	VERSION 2	16 FEB, 2009	DRAWN BY:	RK	
			CHECKED BY:	-	



NOTE: THIS DETAIL IS FOR GENERAL ARRANGEMENT PURPOSES ONLY, AND DOES NOT NECESSARILY REPRESENT A DETAIL THAT IS APPROPRIATE FOR A SPECIFIC PROJECT. PRODUCTS AND ACCESSORIES PROVIDED BY CASCADIA MUST BE CONFIRMED FOR SPECIFIC PROJECTS.

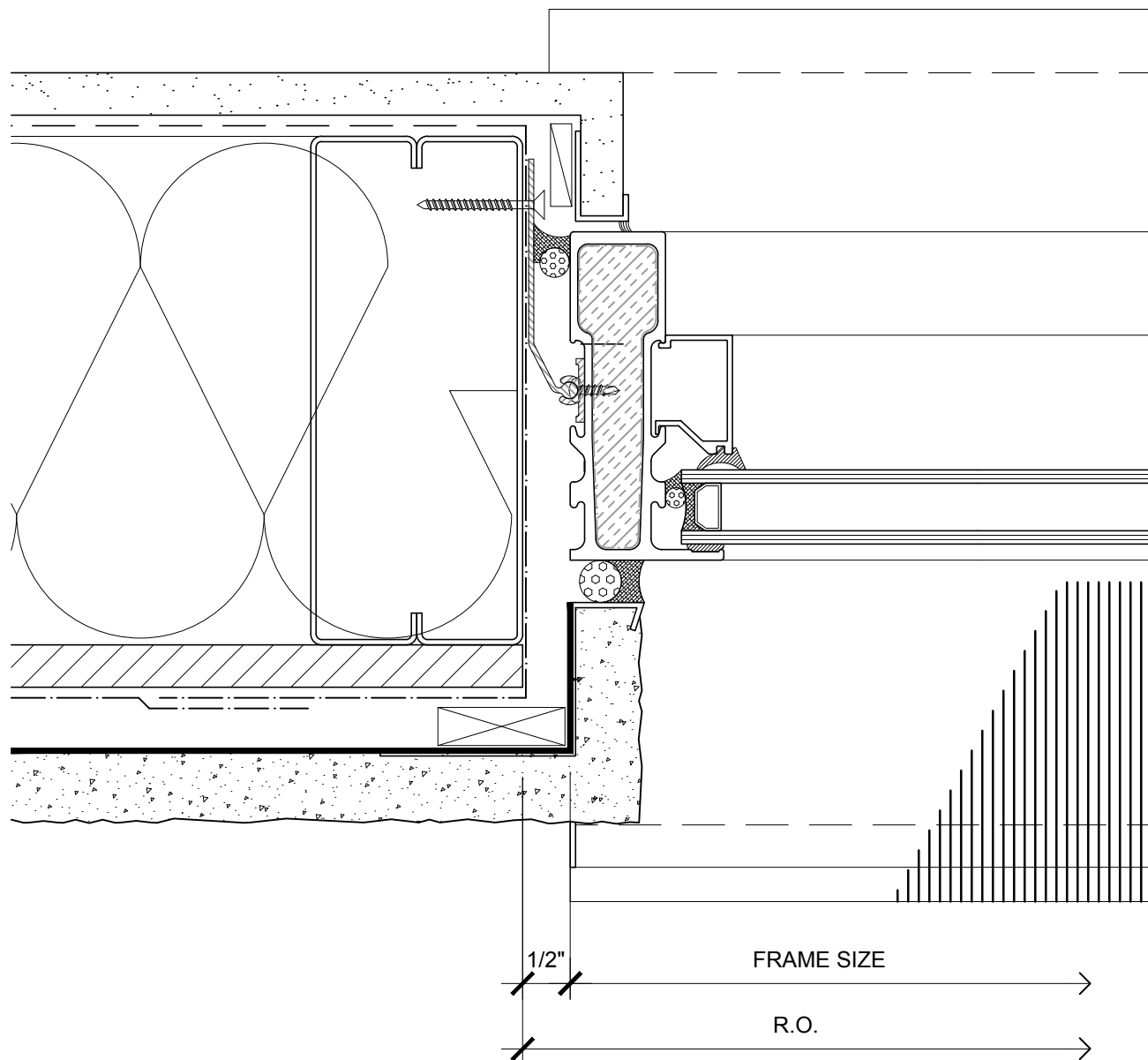
SECTION

NOTE: PROVIDE WATERPROOF SUB-SILL WITH POSITIVE DRAINAGE TO EXTERIOR



CASCADIA WINDOWS LTD.
2760 CLOUDESTER WAY
LANGLEY, BC CANADA V4W 3Y5

SERIES: SERIES 400 STRIP WINDOW WITH CLIPS [CL] AND INTERIOR SILL ANGLE - RECESSED INSTALLATION		DRAWING NO.: 400CL(S)-1.05	
DRAWING TITLE: TYPICAL WINDOW SILL RAINSCREEN WALL ASSEMBLY, STUCCO CLADDING (S)		PROJECT NO.: -	
ISSUE	DESCRIPTION	DATE	SCALE: 6" = 1'-0"
1	VERSION 1	13 JAN, 2009	DATE: 13 JAN, 2009
2	VERSION 2	16 FEB, 2009	DRAWN BY: RK
			CHECKED BY: -



NOTE: THIS DETAIL IS FOR GENERAL ARRANGEMENT PURPOSES ONLY, AND DOES NOT NECESSARILY REPRESENT A DETAIL THAT IS APPROPRIATE FOR A SPECIFIC PROJECT. PRODUCTS AND ACCESSORIES PROVIDED BY CASCADIA MUST BE CONFIRMED FOR SPECIFIC PROJECTS.

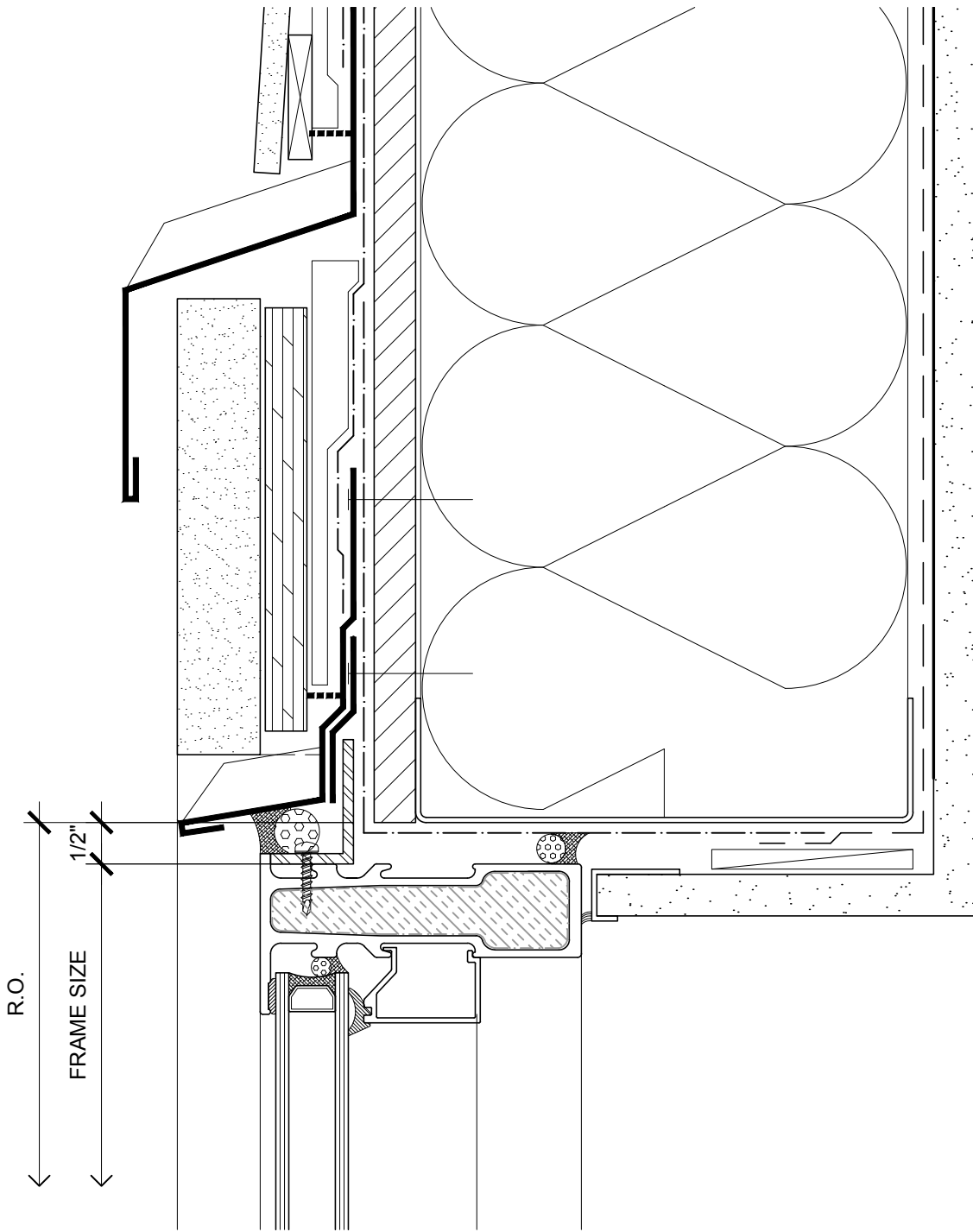
PLAN

NOTE: BRICK MOULD TRIM AND FRAME EXTENDER TRIM AVAILABLE



CASCADIA WINDOWS LTD.
2760 CLIFTON AVENUE
LANGLEY, BC CANADA V4W 3Y5

SERIES: SERIES 400 STRIP WINDOW WITH CLIPS [CL] AND INTERIOR SILL ANGLE - RECESSED INSTALLATION		DRAWING NO.: 400CL(S)-1.06	
DRAWING TITLE: TYPICAL WINDOW JAMB RAINSCREEN WALL ASSEMBLY, STUCCO CLADDING (S)		PROJECT NO.: -	
ISSUE	DESCRIPTION	DATE	SCALE: 6" = 1'-0"
1	VERSION 1	13 JAN, 2009	DATE: 13 JAN, 2009
2	VERSION 2	16 FEB, 2009	DRAWN BY: RK
			CHECKED BY: -



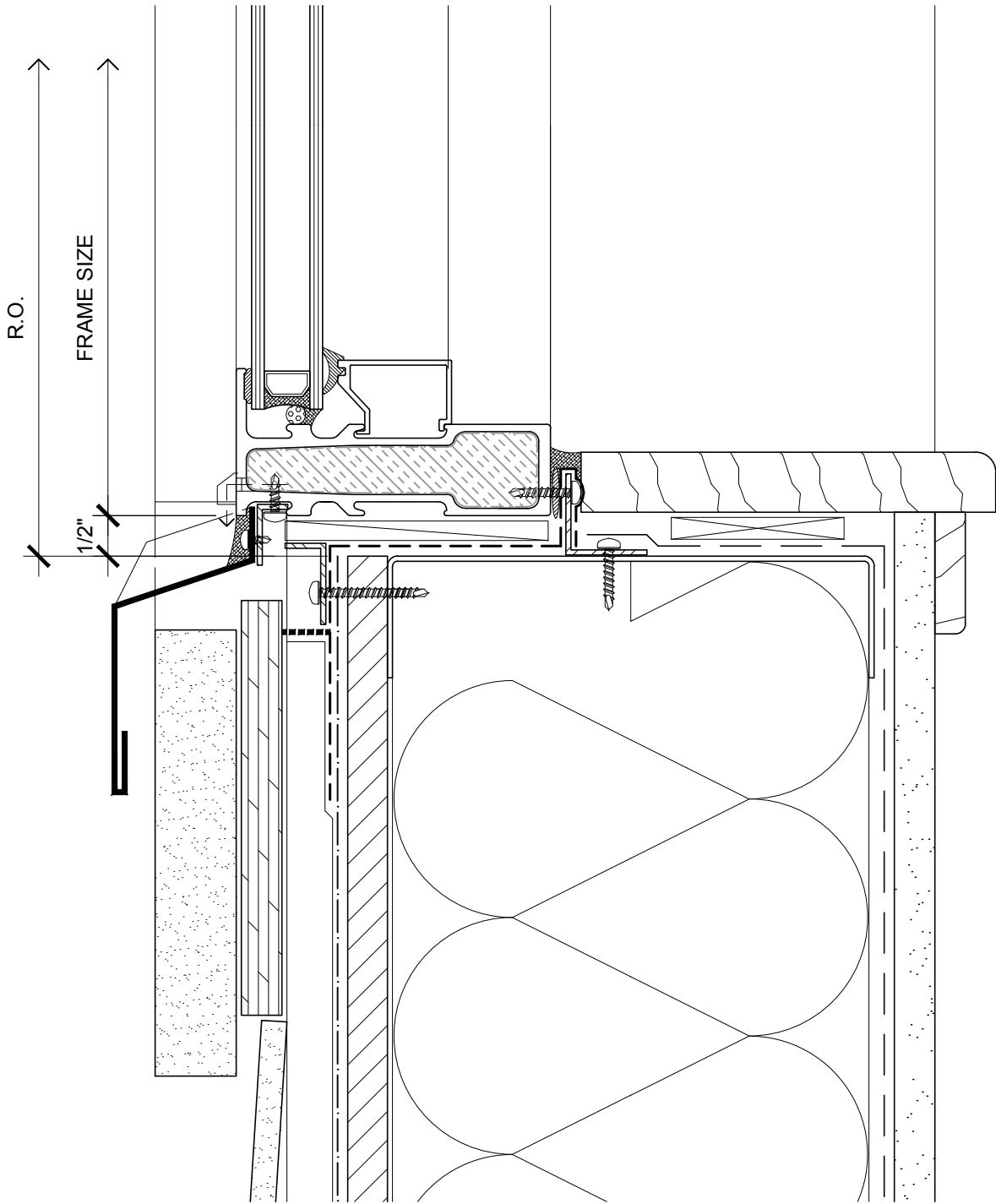
NOTE: THIS DETAIL IS FOR GENERAL ARRANGEMENT PURPOSES ONLY, AND DOES NOT NECESSARILY REPRESENT A DETAIL THAT IS APPROPRIATE FOR A SPECIFIC PROJECT. PRODUCTS AND ACCESSORIES PROVIDED BY CASCADIA MUST BE CONFIRMED FOR SPECIFIC PROJECTS.

SECTION



CASCADIA WINDOWS LTD.
 2460 CLOUDESTER WAY
 LANGLEY, BC CANADA V4W 3Y5

SERIES:		SERIES 400 STRIP WINDOW WITH FLANGE [FL] AND INTERIOR SILL ANGLE		DRAWING NO.:	400FL(C)-1.01
DRAWING TITLE:		TYPICAL WINDOW HEAD RAINSCREEN WALL ASSEMBLY, CEMENT BOARD CLADDING (C)		PROJECT NO.:	-
ISSUE	DESCRIPTION	DATE	SCALE:	6" = 1'-0"	
1	VERSION 1	13 JAN, 2009	DATE:	13 JAN, 2009	
2	VERSION 2	16 FEB, 2009	DRAWN BY:	RK	
			CHECKED BY:	-	



NOTE: THIS DETAIL IS FOR GENERAL ARRANGEMENT PURPOSES ONLY, AND DOES NOT NECESSARILY REPRESENT A DETAIL THAT IS APPROPRIATE FOR A SPECIFIC PROJECT. PRODUCTS AND ACCESSORIES PROVIDED BY CASCADIA MUST BE CONFIRMED FOR SPECIFIC PROJECTS.

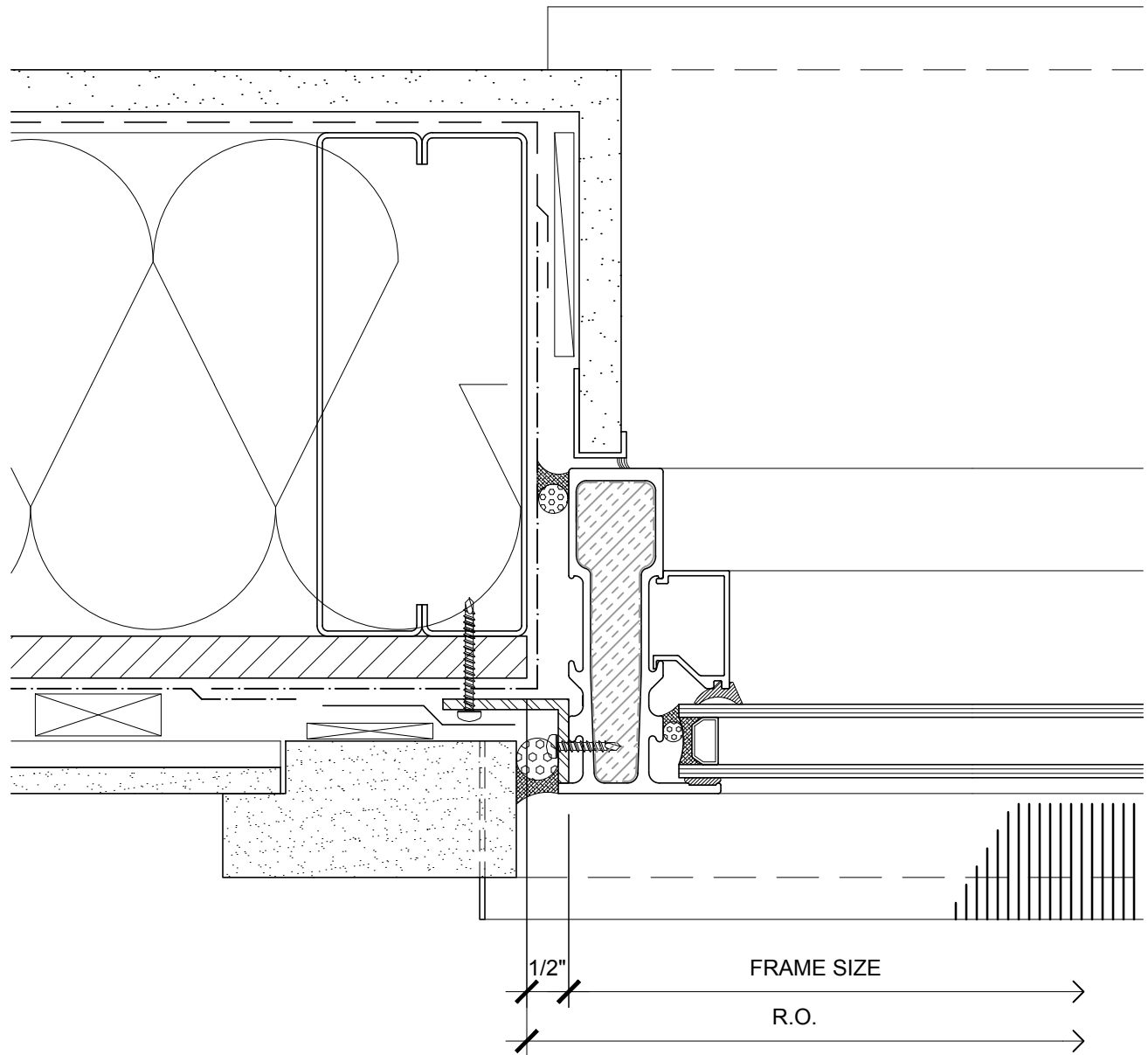
SECTION

NOTE: PROVIDE WATERPROOF SUB-SILL WITH POSITIVE DRAINAGE TO EXTERIOR



CASCADIA WINDOWS LTD.
2460 CLOUDESTER WAY
LANGLEY, BC CANADA V4W 3Y5

SERIES:		SERIES 400 STRIP WINDOW WITH FLANGE [FL] AND INTERIOR SILL ANGLE		DRAWING NO.:	400FL(C)-1.02
DRAWING TITLE:		TYPICAL WINDOW SILL RAINSCREEN WALL ASSEMBLY, CEMENT BOARD CLADDING (C)		PROJECT NO.:	-
ISSUE	DESCRIPTION	DATE	SCALE:	6" = 1'-0"	
1	VERSION 1	13 JAN, 2009	DATE:	13 JAN, 2009	
2	VERSION 2	16 FEB, 2009	DRAWN BY:	RK	
			CHECKED BY:	-	



NOTE: THIS DETAIL IS FOR GENERAL ARRANGEMENT PURPOSES ONLY, AND DOES NOT NECESSARILY REPRESENT A DETAIL THAT IS APPROPRIATE FOR A SPECIFIC PROJECT. PRODUCTS AND ACCESSORIES PROVIDED BY CASCADIA MUST BE CONFIRMED FOR SPECIFIC PROJECTS.

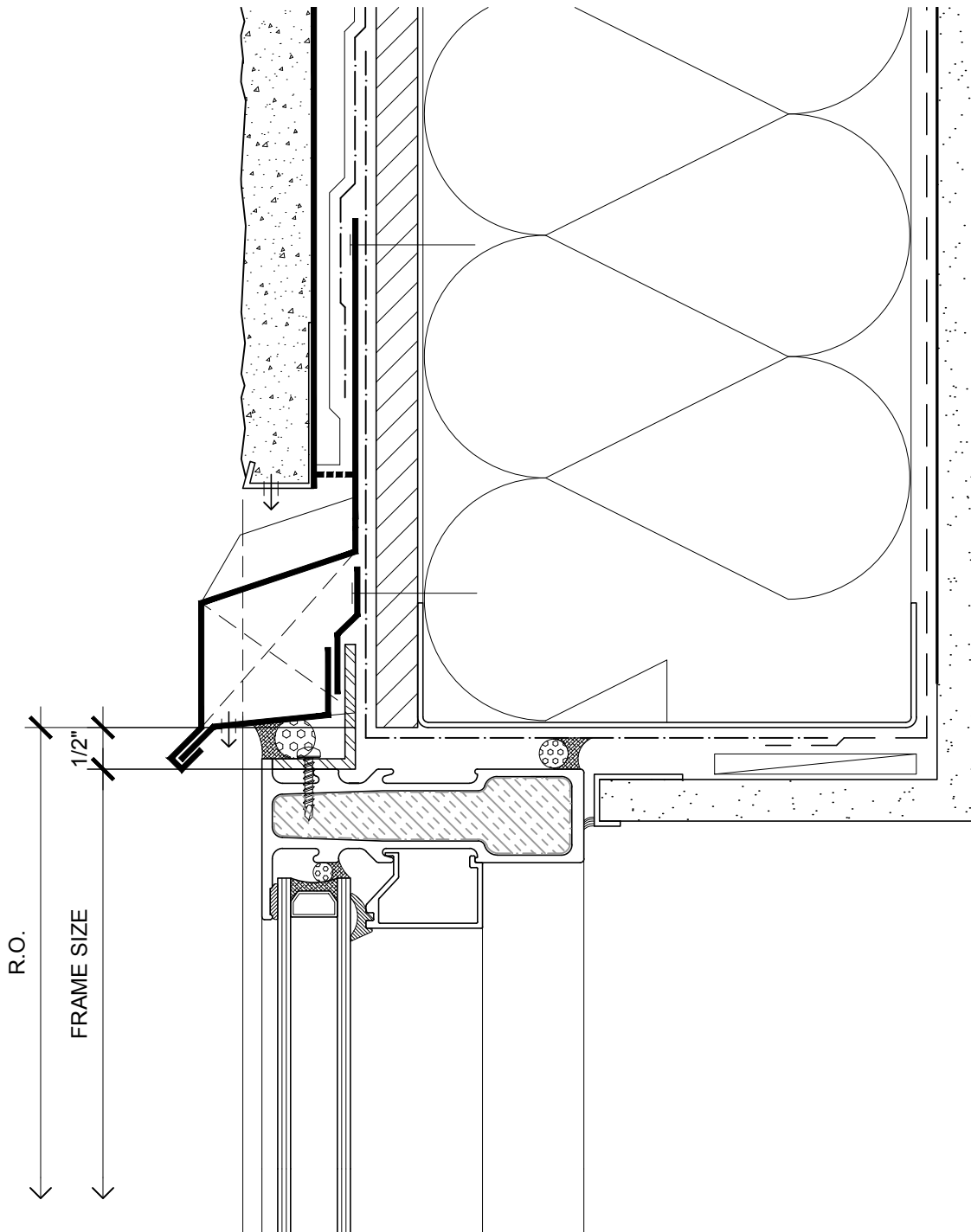
PLAN

NOTE: BRICK MOULD TRIM AND FRAME EXTENDER TRIM AVAILABLE



CASCADIA WINDOWS LTD.
2460 CLOUDESTER WAY
LANGLEY, BC CANADA V4W 3Y5

SERIES:		SERIES 400 STRIP WINDOW WITH FLANGE [FL] AND INTERIOR SILL ANGLE		DRAWING NO.:		400FL(C)-1.03		
DRAWING TITLE:		TYPICAL WINDOW JAMB RAINSCREEN WALL ASSEMBLY, CEMENT BOARD CLADDING (C)				PROJECT NO.:		-
ISSUE	DESCRIPTION	DATE	SCALE:	6" = 1'-0"				
1	VERSION 1	13 JAN, 2009	DATE:	13 JAN, 2009				
2	VERSION 2	16 FEB, 2009	DRAWN BY:	RK				
			CHECKED BY:	-				



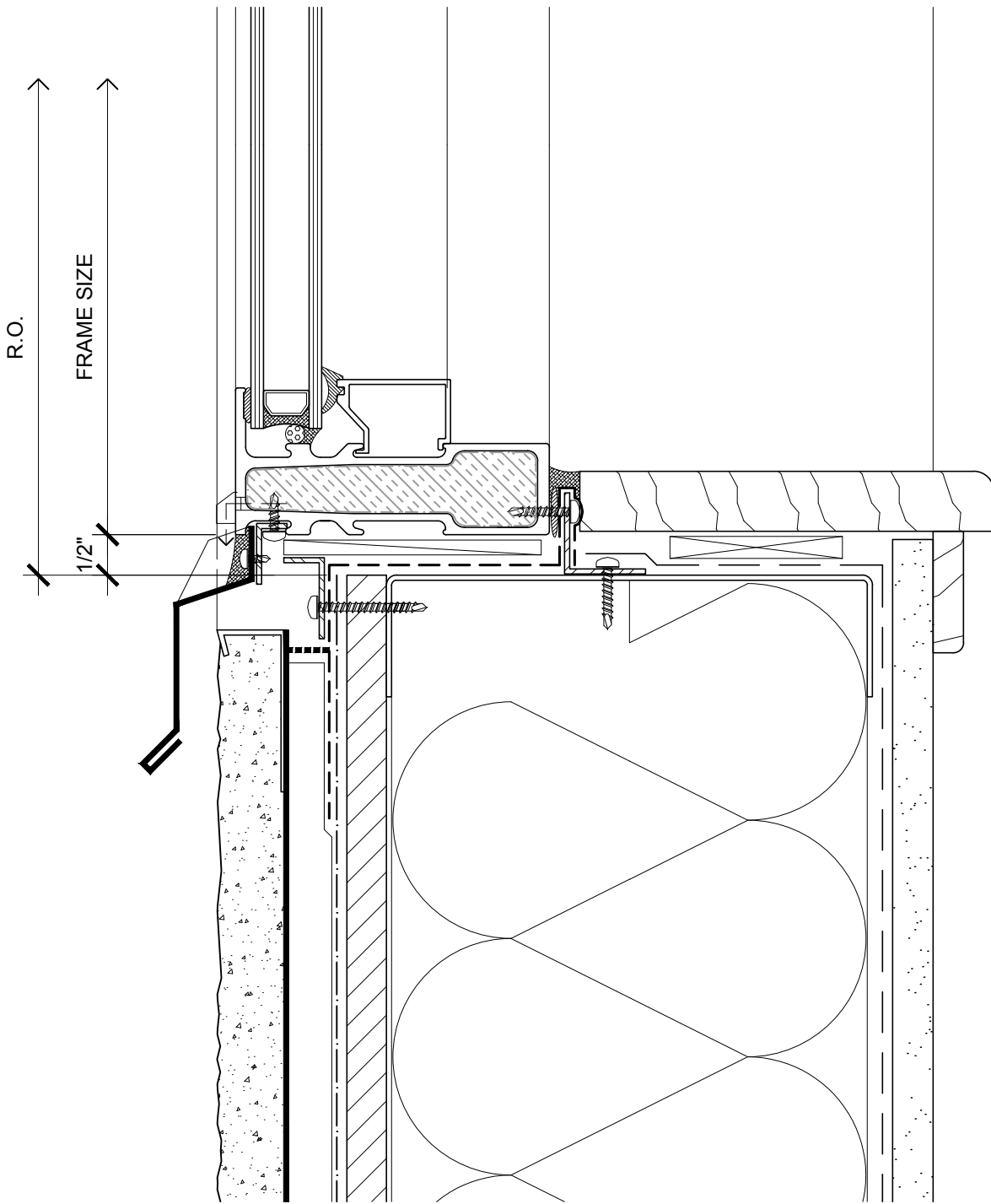
NOTE: THIS DETAIL IS FOR GENERAL ARRANGEMENT PURPOSES ONLY, AND DOES NOT NECESSARILY REPRESENT A DETAIL THAT IS APPROPRIATE FOR A SPECIFIC PROJECT. PRODUCTS AND ACCESSORIES PROVIDED BY CASCADIA MUST BE CONFIRMED FOR SPECIFIC PROJECTS.

SECTION



CASCADIA WINDOWS LTD.
 2760 CLOVERLEAF WAY
 LANGLEY, BC CANADA V4W 3Y5

SERIES:		SERIES 400 STRIP WINDOW WITH FLANGE [FL] AND INTERIOR SILL ANGLE		DRAWING NO.:	400FL(S)-1.01
DRAWING TITLE:		TYPICAL WINDOW HEAD RAINSCREEN WALL ASSEMBLY, STUCCO CLADDING (S)		PROJECT NO.:	-
ISSUE	DESCRIPTION	DATE	SCALE:	6" = 1'-0"	
1	VERSION 1	13 JAN, 2009	DATE:	13 JAN, 2009	
2	VERSION 2	16 FEB, 2009	DRAWN BY:	RK	
			CHECKED BY:	-	



NOTE: THIS DETAIL IS FOR GENERAL ARRANGEMENT PURPOSES ONLY, AND DOES NOT NECESSARILY REPRESENT A DETAIL THAT IS APPROPRIATE FOR A SPECIFIC PROJECT. PRODUCTS AND ACCESSORIES PROVIDED BY CASCADIA MUST BE CONFIRMED FOR SPECIFIC PROJECTS.

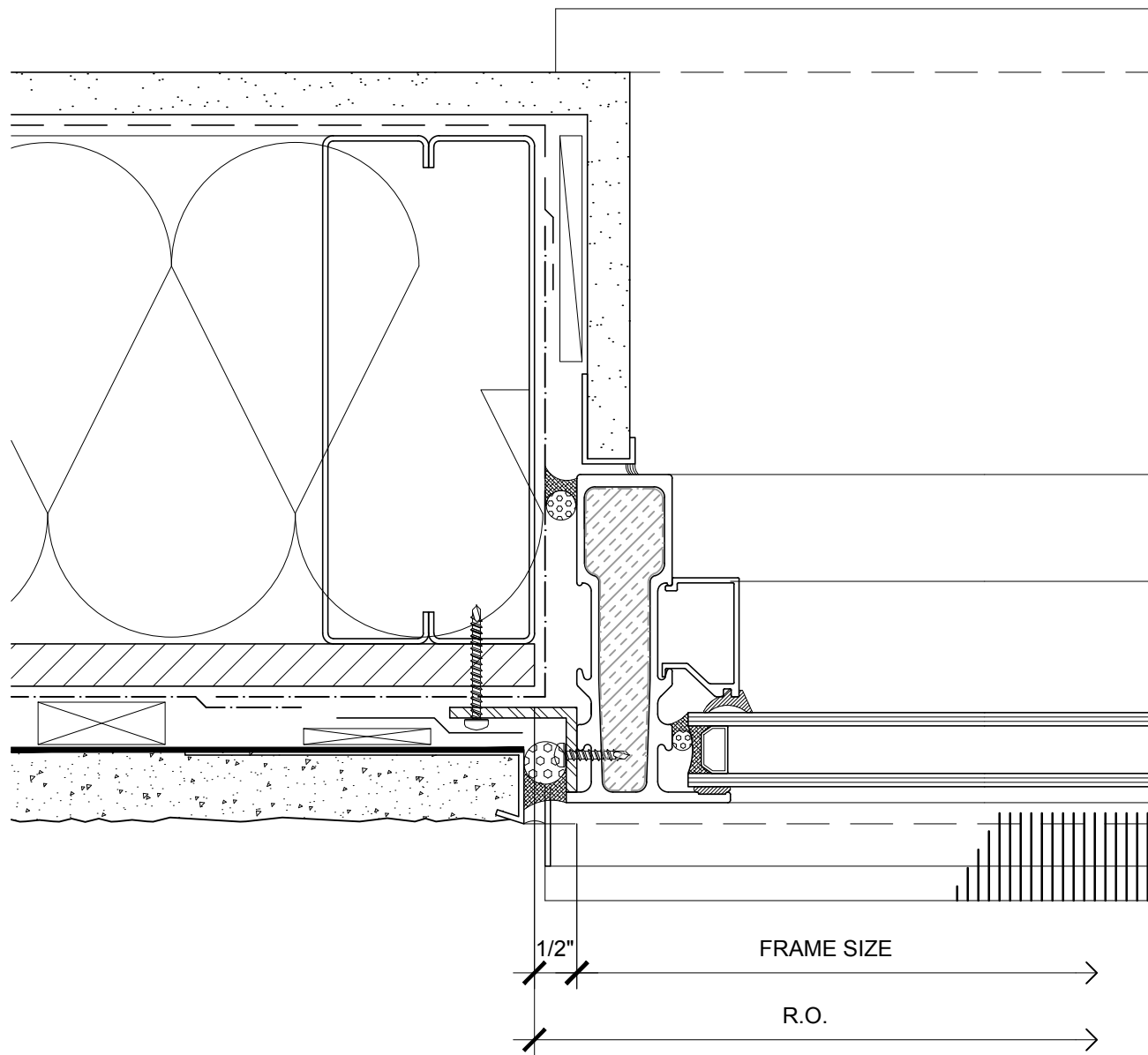
SECTION

NOTE: PROVIDE WATERPROOF SUB-SILL WITH POSITIVE DRAINAGE TO EXTERIOR



CASCADIA WINDOWS LTD.
2760 CLOUDESTER WAY
LANGLEY, BC CANADA V4W 3Y5

SERIES:		SERIES 400 STRIP WINDOW WITH FLANGE [FL] AND INTERIOR SILL ANGLE		DRAWING NO.:	400FL(S)-1.02
DRAWING TITLE:		TYPICAL WINDOW SILL RAINSCREEN WALL ASSEMBLY, STUCCO CLADDING (S)		PROJECT NO.:	-
ISSUE	DESCRIPTION	DATE	SCALE:	6" = 1'-0"	
1	VERSION 1	13 JAN, 2009	DATE:	13 JAN, 2009	
2	VERSION 2	16 FEB, 2009	DRAWN BY:	RK	
			CHECKED BY:	-	



NOTE: THIS DETAIL IS FOR GENERAL ARRANGEMENT PURPOSES ONLY, AND DOES NOT NECESSARILY REPRESENT A DETAIL THAT IS APPROPRIATE FOR A SPECIFIC PROJECT. PRODUCTS AND ACCESSORIES PROVIDED BY CASCADIA MUST BE CONFIRMED FOR SPECIFIC PROJECTS.

PLAN

NOTE: BRICK MOULD TRIM AND FRAME EXTENDER TRIM AVAILABLE



CASCADIA WINDOWS LTD.
2160 CLOUDESTER WAY
LANGLEY, BC CANADA V4W 3Y5

SERIES:		SERIES 400 STRIP WINDOW WITH FLANGE [FL] AND INTERIOR SILL ANGLE		DRAWING NO.:		400FL(S)-1.03		
DRAWING TITLE:		TYPICAL WINDOW JAMB RAINSCREEN WALL ASSEMBLY, STUCCO CLADDING (S)				PROJECT NO.:		-
ISSUE	DESCRIPTION	DATE	SCALE:	6" = 1'-0"				
1	VERSION 1	13 JAN, 2009	DATE:	13 JAN, 2009				
2	VERSION 2	16 FEB, 2009	DRAWN BY:	RK				
			CHECKED BY:	-				